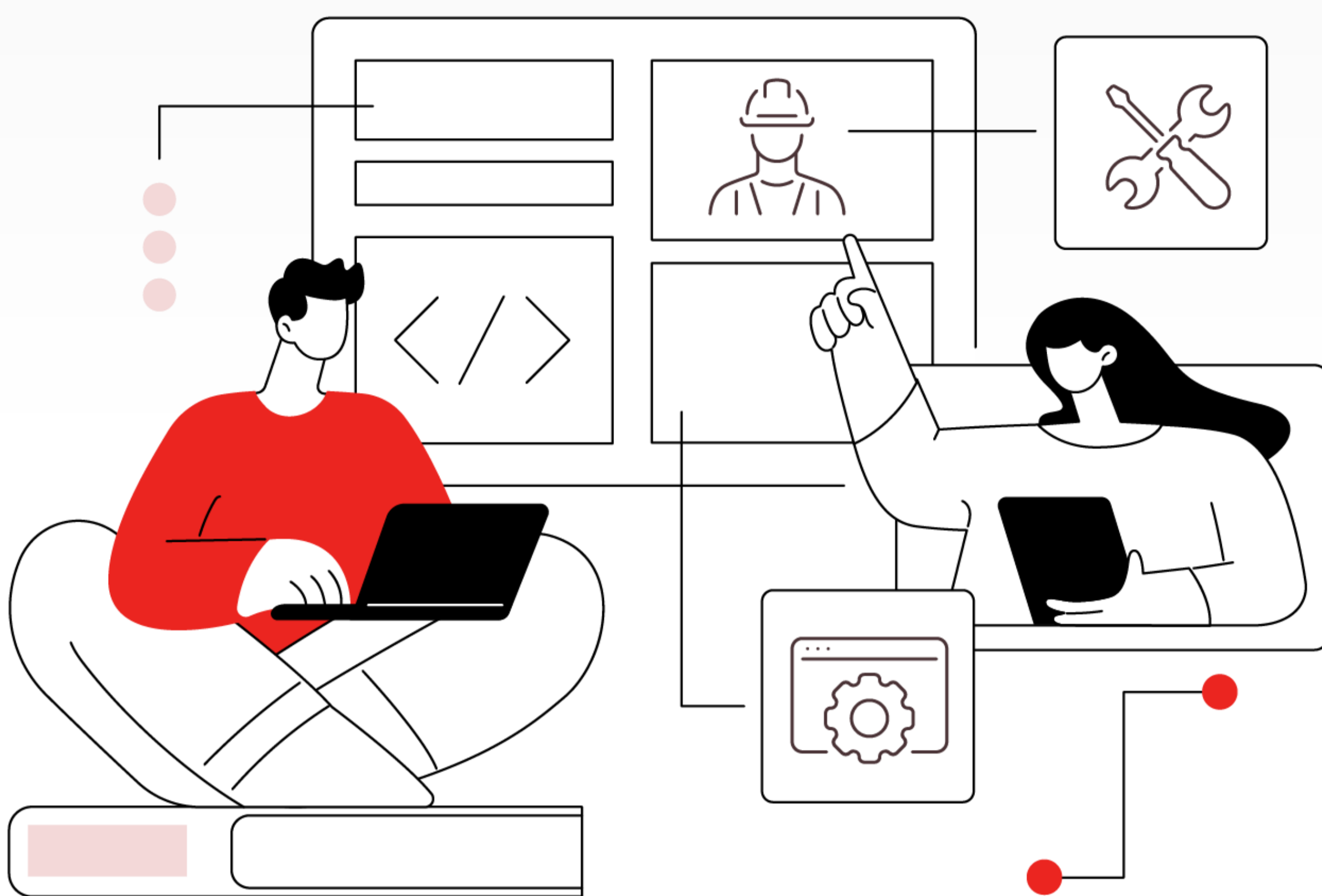


HOW TO

Use Network Speaker with IP Camera



Note: G5 IPC with customized firmware 5.7.52_231211.

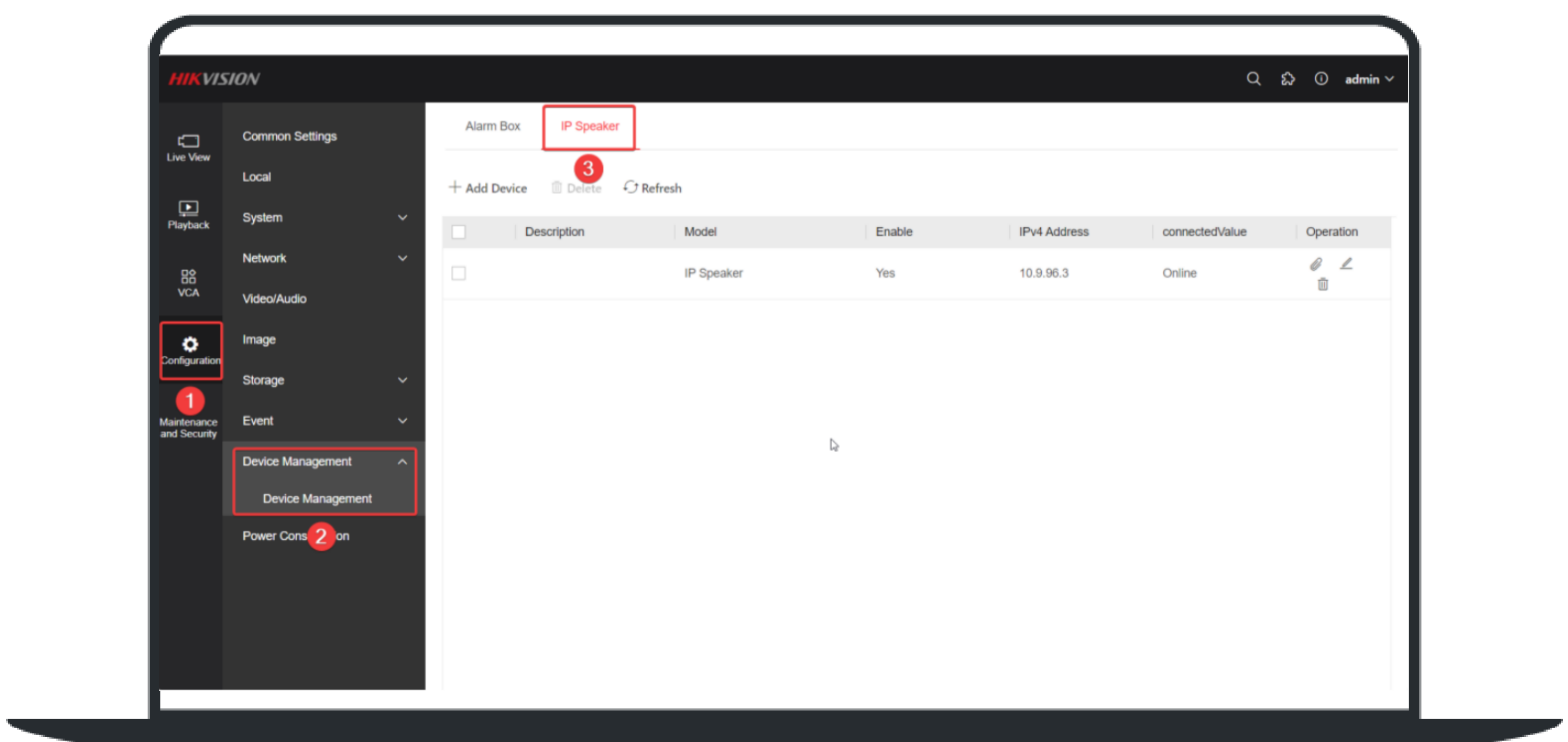
QA model IP Speaker with firmware newer than 1.2.1.

For the customized firmware please contact local support team.

Adding Network Speaker

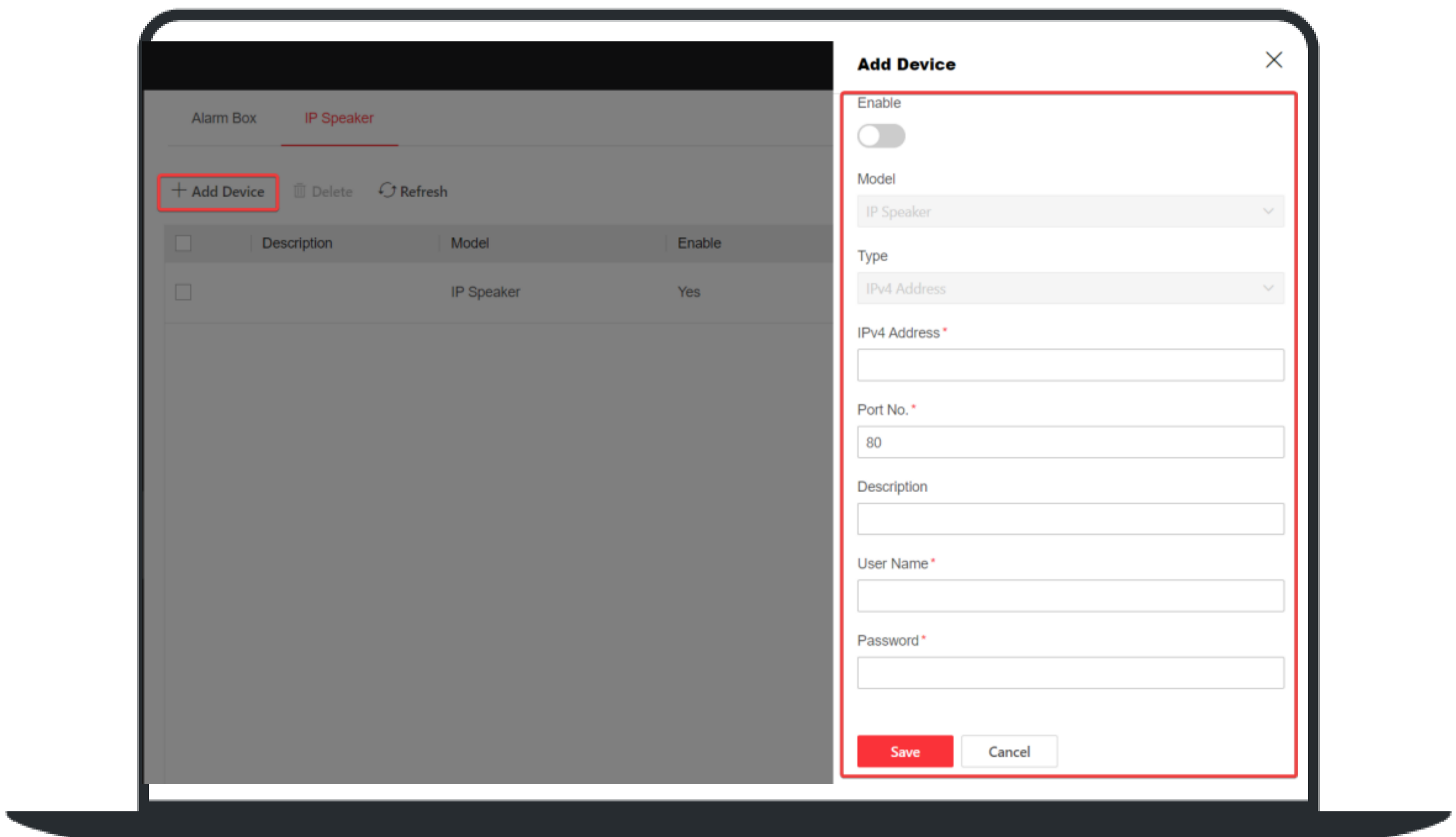
Note: Login IPC web page, turn to Configuration > Device Management > IP Speaker, then click Add Device.

Here take DS-2CD3046G2H-LI as an example:



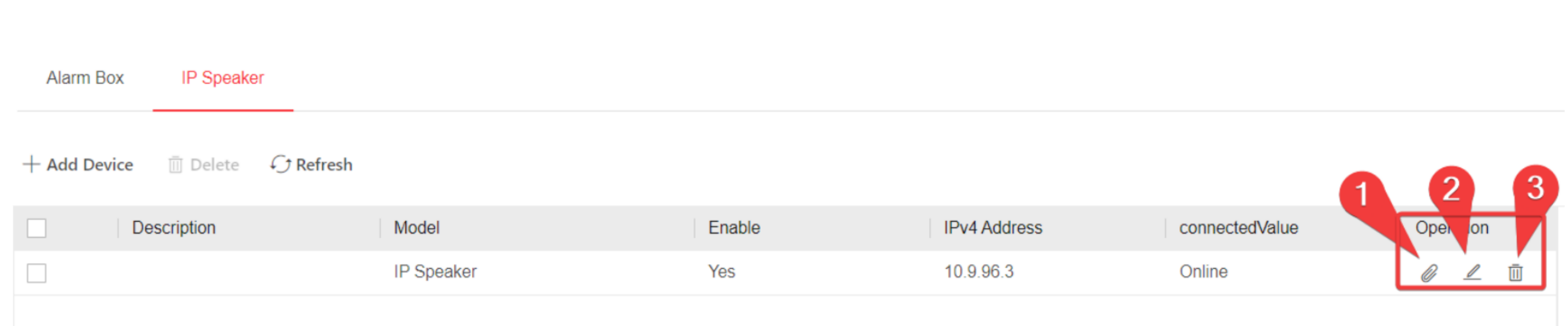
Note: 1. Port Number is 80 by default.

2. Currently one IPC can only add one IP Speaker.



Speaker Management

Users can manage IP Speaker via clicking three different icons under Operation list.



① Users can click '' to enter configuration page of IP Speaker.

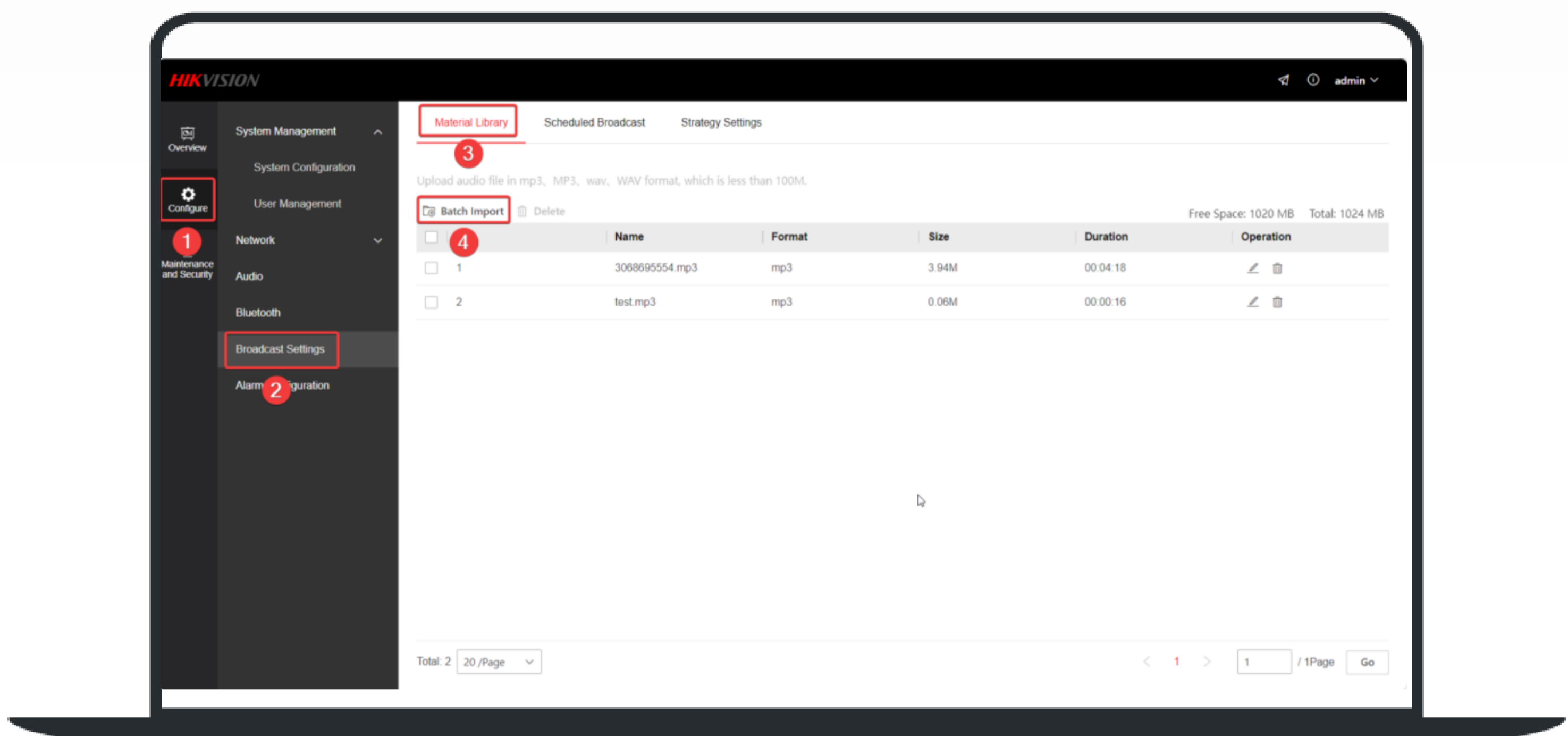
② Users can click '' to enable/disable IP Speaker.

③ Users can delete IP Speaker by clicking '🗑️' icon.

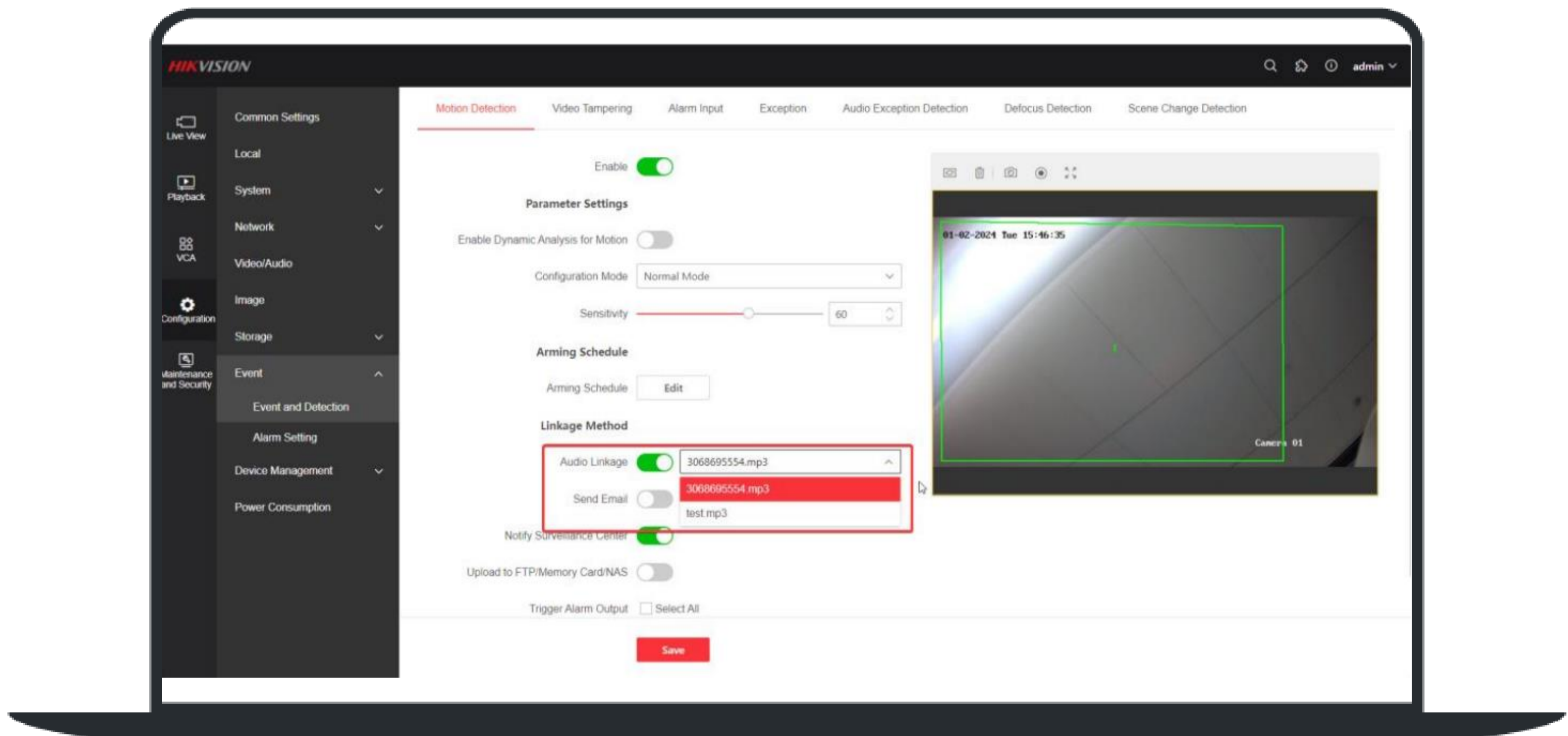
Alarm Linkage Audio

The IP Speaker can be linked to the following event types: Motion Detection, Alarm in, Intrusion Detection, Line Crossing Detection, Region Entrance Detection, and Region Exiting Detection.

Note: The audio linkage list can only show up to 10 audio files. To add audio files, they must be uploaded to the IP Speaker through its web page in advance.

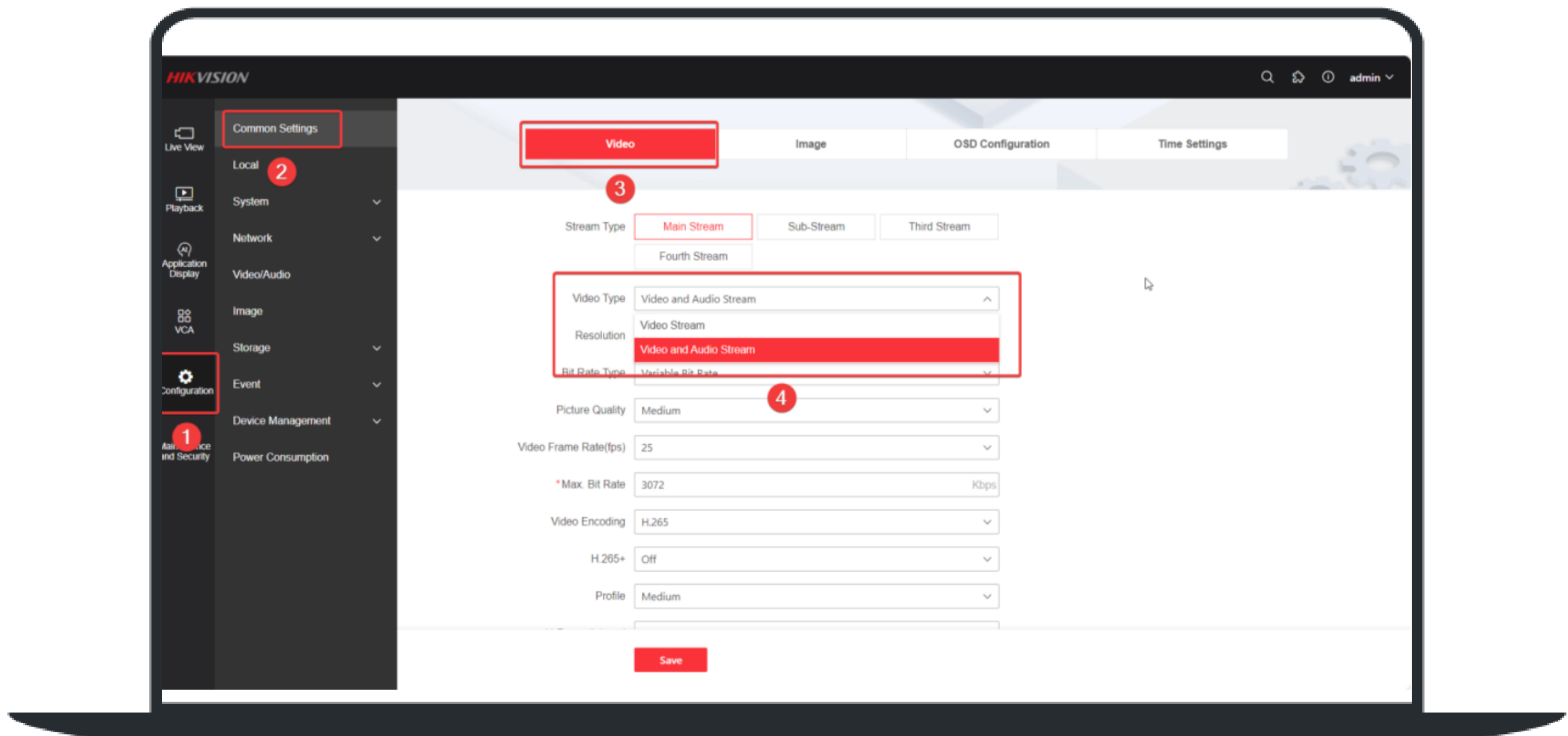


For instance, by enabling the IP Speaker in the motion detection settings, users can configure audio linkage so that the IP speaker plays specific audio when a motion detection event occurs.



Two-way Audio

Step 1: Switch Video Type of camera from Video Stream to Video and Audio Stream.



Step 2: In the live view page of IPC, click Start Two-Way Audio, users can start two-way intercom with IP Speaker (Speaker needs to be enabled).

