

HIKVISION

Dashcam User Manual



Download App

A User Manual

©2018 Hangzhou Hikvision Digital Technology Co., Ltd.

ALL RIGHTS RESERVED.

Any and all information, including, among others, wordings, pictures, graphs are the properties of Hangzhou Hikvision Digital Technology Co., Ltd. This user manual (hereinafter referred to be “the Manual”) cannot be reproduced, changed, translated, or distributed, partially or wholly, by any means, without the prior written permission of our company. Unless otherwise stipulated, our company do not make any warranties, guarantees or representations, express or implied, regarding to the Manual.

About this Manual

This Manual is applicable to Dashcam.

The Manual includes instructions for using and managing the product. Pictures, charts, images and all other information hereinafter are for description and explanation only.

The information contained in the Manual is subject to change, without notice, due to firmware updates or other reasons.

Please use this user manual under the guidance of professionals.

Trademarks Acknowledgement

Our company’s trademarks and logos are the properties of our company in various jurisdictions. Other trademarks and logos mentioned below are the properties of their respective owners.

Legal Disclaimer

TO THE MAXIMUM EXTENT PERMITTED BY APPLICABLE LAW, THE PRODUCT DESCRIBED, WITH ITS HARDWARE, SOFTWARE AND FIRMWARE, IS PROVIDED “AS IS”, WITH ALL FAULTS AND ERRORS, AND OUR COMPANY MAKES NO WARRANTIES, EXPRESS OR IMPLIED, INCLUDING WITHOUT LIMITATION, MERCHANTABILITY, SATISFACTORY QUALITY, FITNESS FOR A PARTICULAR PURPOSE, AND NON-INFRINGEMENT OF THIRD PARTY. IN NO EVENT WILL OUR COMPANY, ITS DIRECTORS, OFFICERS, EMPLOYEES, OR AGENTS BE LIABLE TO YOU FOR ANY SPECIAL, CONSEQUENTIAL, INCIDENTAL, OR INDIRECT DAMAGES, INCLUDING, AMONG OTHERS, DAMAGES FOR LOSS OF BUSINESS PROFITS, BUSINESS INTERRUPTION, OR LOSS OF DATA OR DOCUMENTATION, IN CONNECTION WITH THE USE OF THIS PRODUCT, EVEN IF OUR COMPANY HAS BEEN ADVISED OF THE POSSIBILITY OF SUCH DAMAGES.

REGARDING TO THE PRODUCT WITH INTERNET ACCESS, THE USE OF PRODUCT SHALL BE WHOLLY AT YOUR OWN RISKS. OUR COMPANY SHALL NOT TAKE ANY RESPONSIBILITIES FOR ABNORMAL OPERATION, PRIVACY LEAKAGE OR OTHER DAMAGES RESULTING FROM CYBER ATTACK, HACKER ATTACK, VIRUS INSPECTION, OR OTHER INTERNET SECURITY RISKS; HOWEVER, OUR COMPANY WILL PROVIDE TIMELY TECHNICAL SUPPORT IF REQUIRED.

SURVEILLANCE LAWS VARY BY JURISDICTION. PLEASE CHECK ALL RELEVANT LAWS IN YOUR JURISDICTION BEFORE USING THIS PRODUCT IN ORDER TO ENSURE THAT YOUR USE CONFORMS THE APPLICABLE LAW. OUR COMPANY SHALL NOT BE LIABLE IN THE EVENT THAT THIS PRODUCT IS USED WITH ILLEGITIMATE PURPOSES.

IN THE EVENT OF ANY CONFLICTS BETWEEN THIS MANUAL AND THE APPLICABLE LAW, THE LATER PREVAILS.

B Regulatory Information

FCC Information

Please take attention that changes or modification not expressly approved by the party responsible for compliance could void the user's authority to operate the equipment. FCC compliance: This equipment has been tested and found to comply with the limits for a Class B digital device, pursuant to part 15 of the FCC Rules. These limits are designed to provide reasonable protection against harmful interference in a residential installation. This equipment generates, uses and can radiate radio frequency energy and, if not installed and used in accordance with the instructions, may cause harmful interference to radio communications. However, there is no guarantee that interference will not occur in a particular installation. If this equipment does cause harmful interference to radio or television reception, which can be determined by turning the equipment off and on, the user is encouraged to try to correct the interference by one or more of the following measures:

- Reorient or relocate the receiving antenna.
- Increase the separation between the equipment and receiver.
- Connect the equipment into an outlet on a circuit different from that to which the receiver is connected.
- Consult the dealer or an experienced radio/TV technician for help.

FCC Conditions

This device complies with part 15 of the FCC Rules. Operation is subject to the following two conditions:

1. This device may not cause harmful interference.
2. This device must accept any interference received, including interference that may cause undesired operation.

Please take attention that changes or modification not expressly approved by the party responsible for compliance could avoid the user's authority to operate the equipment. This equipment should be installed and operated with a minimum distance 20cm between the radiator and your body.

B Regulatory Information

EU Conformity Statement



This product and - if applicable - the supplied accessories too are marked with "CE" and comply therefore with the applicable harmonized European standards listed under the EMC Directive 2014/30/EU, the RoHS Directive 2011/65/EU.

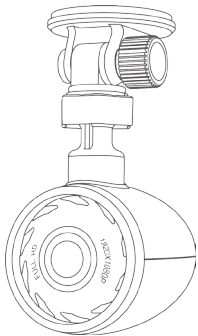


2012/19/EU (WEEE directive): Products marked with this symbol cannot be disposed of as unsorted municipal waste in the European Union. For proper recycling, return this product to your local supplier upon the purchase of equivalent new equipment, or dispose of it at designated collection points. For more information see: www.recyclethis.info

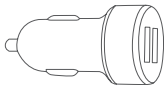


2006/66/EC and its amendment– 2013/56/EU (battery directive): This product contains a battery that cannot be disposed of as unsorted municipal waste in the European Union. See the product documentation for specific battery information. The battery is marked with this symbol, which may include lettering to indicate cadmium (Cd), lead (Pb), or mercury (Hg). For proper recycling, return the battery to your supplier or to a designated collection point. For more information see: www.recyclethis.info

A Packing List



• Dashcam × 1



• Mobile Charger
× 1



• User Manual × 1



• Power Cord
× 1



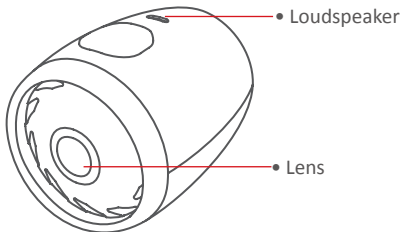
• Electrostatic Film
× 2



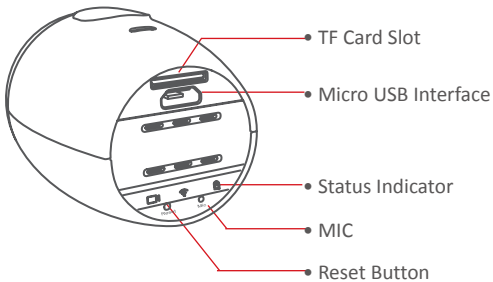
• Gum Circle
× 1

B Camera Description

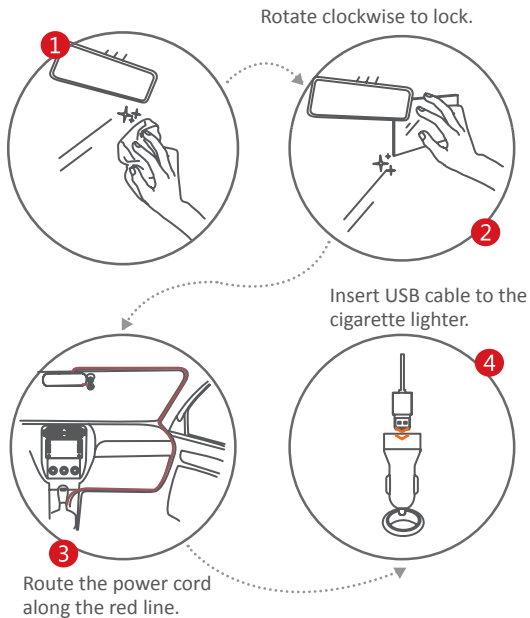
- Front View



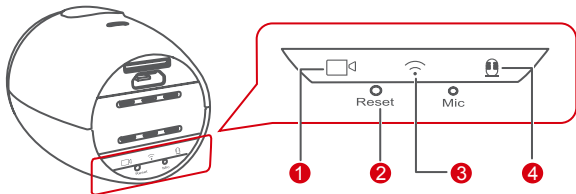
- Rear View



C Installation



D Status Indicator



- 1** Recording indicator
 - Solid red: dashcam in the Emergency Recording mode, and is recording the video.
 - Solid blue: dashcam is the Normal Recording mode, and is recording the video.
- 2** Reset button
 - Press it to reboot dashcam.
 - To restore factory defaults, press down and hold it for 10 seconds till the dashcam sends out the startup sound.
- 3** Wi-Fi indicator
 - Solid blue: Wi-Fi is turned on and waiting to be connected.
 - Flashing blue: a mobile app has connected the Wi-Fi.
- 4** Taping indicator
 - Solid blue: taping when recording.
 - Unlit: recording without taping.

E Mobile Phone Connection

1

Scan the QR code to download the HikDashcam app.



For iOS User



For Android User

2

Add the dashcam in app by connecting with its Wi-Fi.

1. Run the HikDashcam app.
2. In Wi-Fi list, select the Wi-Fi name of target dashcam and enter Wi-Fi password to build connection.

i

Dashcam Wi-Fi default parameters:

- Wi-Fi name: HIKVISION-XXXX (XXXX refers to the last four characters of verification code.)
- Wi-Fi password: 1234567890

F Operation

Power on and Power off

1. Insert the cigarette lighter into the receptacle in automobile.
2. The dashcam powers on once the automobile starts up and powers off once the automobile flameouts.



For automobiles with constant electric power supply, pull the cigarette lighter out of the receptacle to power off dashcam.

Recording

Two recording types are provided: Normal Reording and Emergency Recording.

You can switch recording type in app.



GPreventions and Cautionary Tips

Tips for Dashcam

- Operate the dashcam in accordance with the local regulations and laws.
- Save the user manual properly for future reference.
- To ensure data is safe and stable, install a micro SD card bought from formal channel. It is recommended to use a high-speed micro SD card of class 10 and above.
- To protect micro SD card from damage, shut down the dashcam before installing and uninstalling micro SD card.
- In case the dashcam is directly connected with the automobile power system, you are recommended to power off the dashcam when the automobile is off.
- Working temperature: [-10°C, +70°C] ([14°F, 158°F]). To protect the dashcam, do not use it in high-humidity and high-dust density environment and keep all liquids away from it.
- The manual is subject to dashcam update.

H Trouble Shooting

Trouble	Solution
The dashcam drops easily.	<ul style="list-style-type: none">• Clean the glass before installation.• Tear off the dust-proof film on suction cup before installation.
Starting dashcam failed.	<ul style="list-style-type: none">• Ensure the automobile started normally.• If no indicator is lighting, reconnect the cigarette lighter.• Restore dashcam to factory defaults.
The dashcam powers off frequently.	<ul style="list-style-type: none">• Ensure the power cord is well.• Ensure the connection between dashcam and power cord is well.
Recording is abnormal and recording indicator is unlit.	<ul style="list-style-type: none">• Ensure the dashcam started normally.• Ensure micro SD card is installed.• Check micro SD card status, e.g., its format and lifespan. If it is not well, replace it with a good one.
Recorded videos are fuzzy.	<ul style="list-style-type: none">• Tear off the proof film on lens.• Clean the lens and glass.
Audio is not recorded with video.	Enable "Tape When Recording" in app.

H Trouble Shooting

Trouble	Solution
Connecting the dashcam via app failed.	<ul style="list-style-type: none">• Ensure the app is well installed.• Restart the app and dashcam.
Playing video via app failed.	The trouble may be relevant with the mobile phone player or system. Insert the micro SD card into your computer and play the videos.
Failed to detect the micro SD card when connecting the dashcam and your computer with the power cord.	The dashcam does not support data transmission. And the power cord is only for charging. If you need to transfer data, take out the SD card and connect it to your computer.
It takes a long time to connect the dashcam Wi-Fi.	<ul style="list-style-type: none">• It may be caused by the interference of the surrounding Wi-Fi signals. You can operate the dashcam in an environment with less interference.• Close unnecessary programs in your mobile phone to release some resources for the dashcam app.
Dashcam Wi-Fi password is forgotten.	Restore dashcam to factory defaults (default password 1234567890). And then reconnect the dashcam.

UD08414B-A