

DS-MP1351 Mobile Intercom

User Manual

UD02056N

TABLE OF CONTENTS

Chapter 1 Introduction	6
1.1 Overview.....	6
1.2 Components	7
1.3 Pin Definition.....	7
Chapter 2 Dimension.....	8
Chapter 3 Installation.....	9
Chapter 4 Connecting to the Mobile DVR.....	10
Chapter 5 Application Method	11
Chapter 6 FAQ.....	12

User Manual

About this Manual

This Manual is applicable to DS-MP1351 Mobile Intercom.

The Manual includes instructions for using and managing the product. Pictures, charts, images and all other information hereinafter are for description and explanation only. The information contained in the Manual is subject to change, without notice, due to firmware updates or other reasons. Please find the latest version in the company website

Please use this user manual under the guidance of professionals.

Legal Disclaimer

REGARDING TO THE PRODUCT WITH INTERNET ACCESS, THE USE OF PRODUCT SHALL BE WHOLLY AT YOUR OWN RISKS. OUR COMPANY SHALL NOT TAKE ANY RESPONSIBILITIES FOR ABNORMAL OPERATION, PRIVACY LEAKAGE OR OTHER DAMAGES RESULTING FROM CYBER ATTACK, HACKER ATTACK, VIRUS INSPECTION, OR OTHER INTERNET SECURITY RISKS; HOWEVER, OUR COMPANY WILL PROVIDE TIMELY TECHNICAL SUPPORT IF REQUIRED.

SURVEILLANCE LAWS VARY BY JURISDICTION. PLEASE CHECK ALL RELEVANT LAWS IN YOUR JURISDICTION BEFORE USING THIS PRODUCT IN ORDER TO ENSURE THAT YOUR USE CONFORMS THE APPLICABLE LAW. OUR COMPANY SHALL NOT BE LIABLE IN THE EVENT THAT THIS PRODUCT IS USED WITH ILLEGITIMATE PURPOSES.

IN THE EVENT OF ANY CONFLICTS BETWEEN THIS MANUAL AND THE APPLICABLE LAW, THE LATER PREVAILS.

Regulatory Information

FCC Information

Please take attention that changes or modification not expressly approved by the party responsible for compliance could void the user's authority to operate the equipment.

FCC compliance: This equipment has been tested and found to comply with the limits for a Class A digital device, pursuant to part 15 of the FCC Rules. These limits are designed to provide reasonable protection against harmful interference when the equipment is operated in a commercial environment. This equipment generates, uses, and can radiate radio frequency energy and, if not installed and used in accordance with the instruction manual, may cause harmful interference to radio communications. Operation of this equipment in a residential area is likely to cause harmful interference in which case the user will be required to correct the interference at his own expense.

FCC Conditions

This device complies with part 15 of the FCC Rules. Operation is subject to the following two conditions:

1. This device may not cause harmful interference.
2. This device must accept any interference received, including interference that may cause undesired operation.

EU Conformity Statement



This product and - if applicable - the supplied accessories too are marked with "CE" and comply therefore with the applicable harmonized European standards listed under the EMC Directive 2014/30/EU, the LVD Directive 2014/35/EU, the RoHS Directive 2011/65/EU.



2012/19/EU (WEEE directive): Products marked with this symbol cannot be disposed of as unsorted municipal waste in the European Union. For proper recycling, return this product to your local supplier upon the purchase of equivalent new equipment, or dispose of it at designated collection points. For more information see: www.recyclethis.info



2006/66/EC (battery directive): This product contains a battery that cannot be disposed of as unsorted municipal waste in the European Union. See the product documentation for specific battery information. The battery is marked with this symbol, which may include lettering to indicate cadmium (Cd), lead (Pb), or mercury (Hg). For proper recycling, return the battery to your supplier or to a designated collection point. For more information see: www.recyclethis.info

Industry Canada ICES-003 Compliance

This device meets the CAN ICES-3 (A)/NMB-3(A) standards requirements.




Applicable Models

This manual is applicable to the models listed in the following table.

Series	Model
Mobile intercom	DS-MP1351

Symbol Conventions

The symbols that may be found in this document are defined as follows.

Symbol	Description
 NOTE	Provides additional information to emphasize or supplement important points of the main text.
 WARNING	Indicates a potentially hazardous situation, which if not avoided, could result in equipment damage, data loss, performance degradation, or unexpected results.
 DANGER	Indicates a hazard with a high level of risk, which if not avoided, will result in death or serious injury.

Safety Instruction

- Proper configuration of all passwords and other security settings is the responsibility of the installer and/or end-user.
- In the use of the product, you must be in strict compliance with the electrical safety regulations of the nation and region. Please refer to technical specifications for detailed information.
- Input voltage should meet both the SELV (Safety Extra Low Voltage) and the Limited Power Source with 100~240 VAC or 12 VDC according to the IEC60950-1 standard. Please refer to technical specifications for detailed information.
- Do not connect several devices to one power adapter as adapter overload may cause over-heating or a fire hazard.
- Please make sure that the plug is firmly connected to the power socket.
- If smoke, odor or noise rise from the device, turn off the power at once and unplug the power cable, and then please contact the service center.

Preventive and Cautionary Tips

Before connecting and operating your device, please be advised of the following tips:

- Ensure unit is installed in a well-ventilated, dust-free environment.
- Keep all liquids away from the device.
- Ensure environmental conditions meet factory specifications.
- Ensure unit is properly secured to a rack or shelf. Major shocks or jolts to the unit as a result of dropping it may cause damage to the sensitive electronics within the unit.
- Power down the unit before connecting and disconnecting accessories and peripherals.
- Improper use or replacement of the battery may result in hazard of explosion. Replace with the same or equivalent type only. Dispose of used batteries according to the instructions provided by the battery manufacturer.

Chapter 1 Introduction

1.1 Overview

Based on half-duplex mode, DS-MP1351 Mobile Intercom can realize two-way audio with high sound quality and low noise interference. It is powered by the directly connected mobile DVR. In addition, it features in low power consumption and long transmission distance.

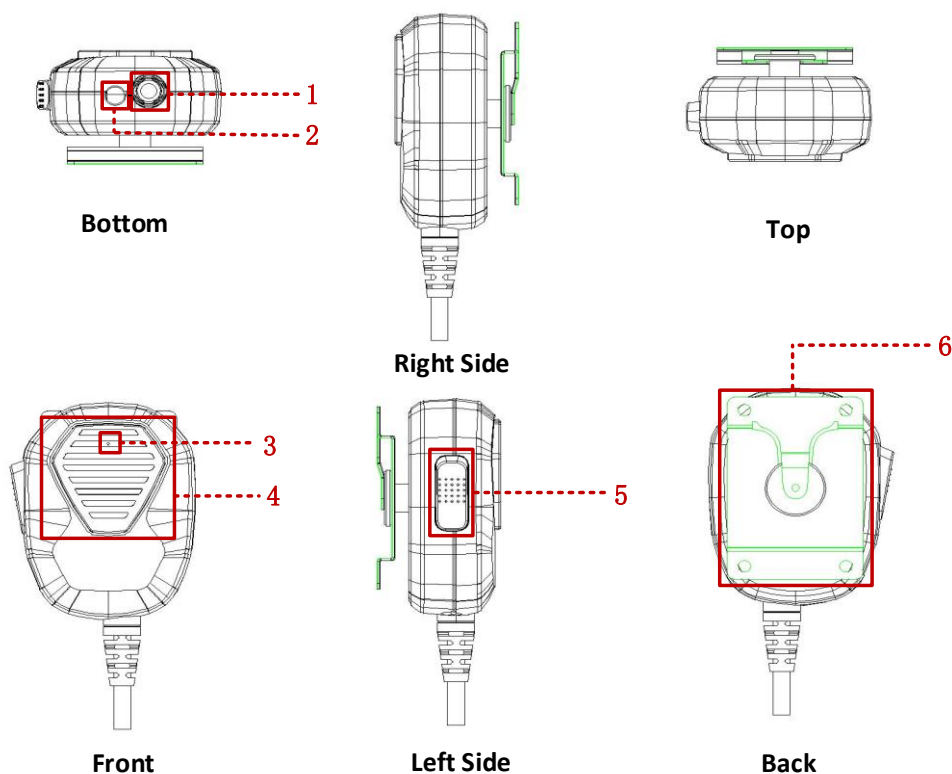


Figure 1. 1 DS-MP1351 Mobile Intercom

Refer to Table 1.1 for the description of DS-MP1351 Mobile Intercom.




Table 1. 1 Mobile Intercom Description

No.	Name	Description
1	Attached cable	2-meter attached spring cable after extended with a 4-pin female aviation plug on the other side for connecting to the mobile DVR via the adapter cable.
2	Headset jack	For connecting to the external 4-section headset.
3	Mic	For audio input.
4	Amplifier	For audio output.
5	PTT	For controlling audio input/output.
6	Hook	Installation bracket for fixing the mobile intercom.

1.2 Components

The device components are listed in Table 1.2.

Table 1. 2 Components

Physical Interface	Name	Description
	DS-MP1351 Mobile Intercom	DS-MP1351 Mobile Intercom, with a 2-meter attached spring cable after extended with a 4-pin female aviation plug on the other side.
	Hook	Used to fix the mobile intercom.
	Extended cable (optional)	An optional extended cable is provided with one 4-pin female aviation plug for connecting to the adapter cable and the other 4-pin male aviation plug for connecting to intercom.

1.3 Pin Definition

DS-MP1351 Mobile Intercom has an attached cable with a 4-pin female aviation plug on one side. The pin definition is shown as the following figure and table.

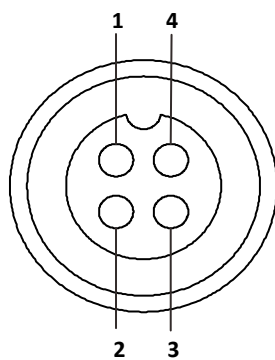


Figure 1. 2 4-Pin Aviation Plug

Table 1. 3 Pin Definition of 4-Pin Aviation Plug

No.	Description	No.	Description
1	LINE IN	3	12 VDC
2	LINE OUT	4	GND

Chapter 2 Dimension

The dimension of the DS-MP1351 Mobile Intercom is shown as the following figure.

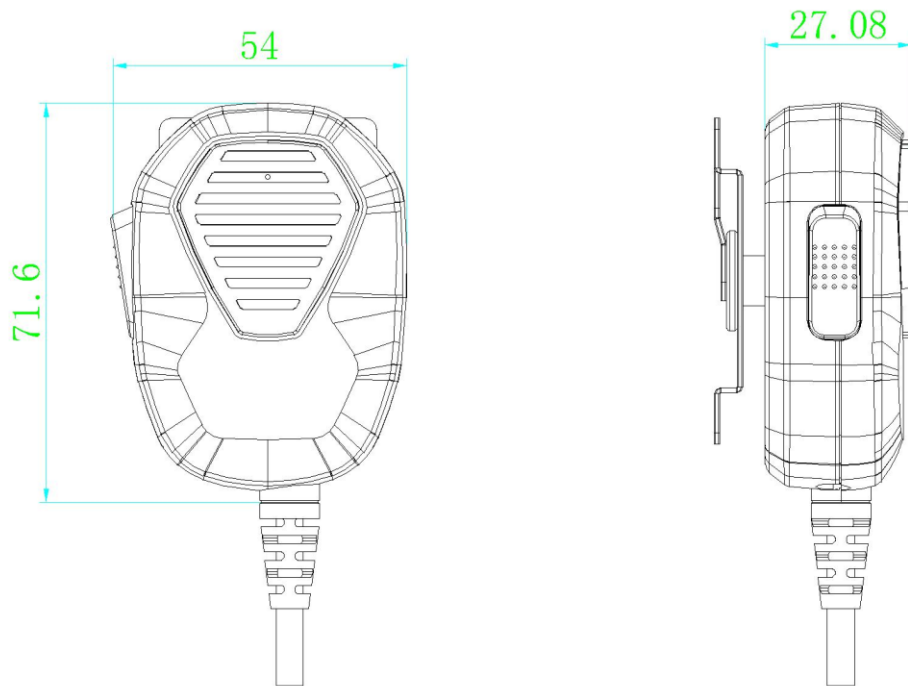


Figure 2.1 Dimension of DS-MP1351 Mobile Intercom

The dimension of the attached cable is shown as the following figure.

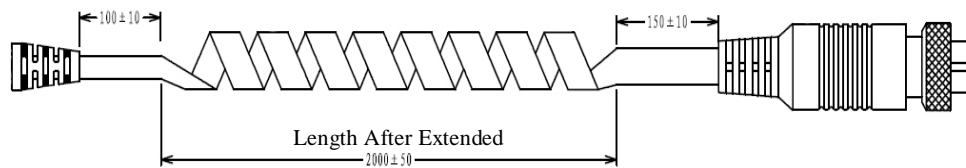


Figure 2.2 Dimension of the Attached Cable

Chapter 3 Installation

Purpose:

Follow the steps listed below to install the intercom.

Steps:

1. Install the hook on the back of the intercom as shown in the following figure.



Figure 3.1 Install the Hook

2. There are 4 screw holes on the hook, and you can fasten the screws to fix the intercom on the vehicle near the instrument panel.



Figure 3.2 Fix the Intercom

3. When installing, make sure the mic faces towards the voice source (that is the driver).
4. To ensure the best effect, the installation distance is no more than 50 to 100 cm away from the driver.

 **NOTE**

You are not allowed to disassemble the intercom without the guidance of professionals.

Chapter 4 Connecting to the Mobile DVR

Purpose:

DS-MP1351 Mobile Intercom is powered by the connected mobile DVR. Since the mobile DVR does not provide the 4-pin aviation plug for two-way audio, an adapter cable for connecting to the EXT.DEV interface of the mobile DVR is needed.

Steps:

1. Connect the 2*7 plug of the adapter cable to the EXT.DEV interface of the mobile DVR.
2. If the attached 2-meter cable of the intercom is long enough, connect the 4-pin male aviation plug of the adapter cable to the 4-pin female aviation plug of the intercom directly.



Figure 4. 1 Connect to the Mobile DVR (1)

3. (Optional) If the attached 2-meter cable of the intercom is not long enough, connect the 4-pin male aviation plug of the adapter cable to the 4-pin female aviation plug of the extended cable and then connect the 4-pin male aviation plug of the extension cable to the 4-pin female aviation plug of the intercom.



Figure 4. 2 Connect to the Mobile DVR (2)

Chapter 5 Application Method

Purpose:

Adopting half-duplex mode, DS-MP1351 Mobile Intercom enables easy two-way audio.

Before you start:

Connect the intercom to the mobile DVR and turn on the DVR. Make sure the intercom is successfully connected to the platform and the platform's two-way audio is enabled.

● **Option 1: Two-Way Audio Without External Headset**

Steps:

1. Press and hold the PTT on the side of the intercom for audio input.
2. Release the PTT for audio output.

● **Option 2: Two-Way Audio with External Headset**

Steps:

1. Insert the external headset to the jack of the intercom.
2. Speak to the mic of the external headset directly for audio input.
3. Listen to the headset for audio output.



NOTE

- Full-duplex mode is enabled when inserting the external headset.
- The internal mic, amplifier and PTT button do not take effect after the external headset is connected.

Chapter 6 FAQ

1. **Failed to enable two-way audio.**
 - Make sure the intercom is successfully connected to the platform.
 - Make sure the platform's two-way audio is enabled.
2. **The quality of the sound received by the platform is poor.**
 - Adjust PC's volume to the ideal state.

0100001060628