

# How to upgrade firmware and change IP for display screening

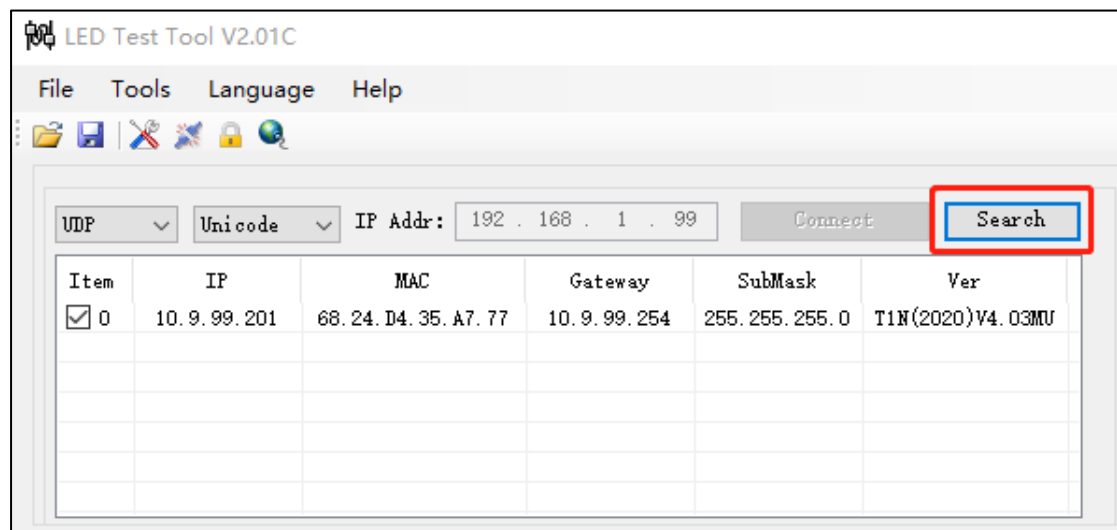
Applicable to

Device: E&E Screening (Multi-language control panel)

Configuration Tool: LED Test Tool V2.01C

## Change IP for display screening

1. Click Search, search control panel



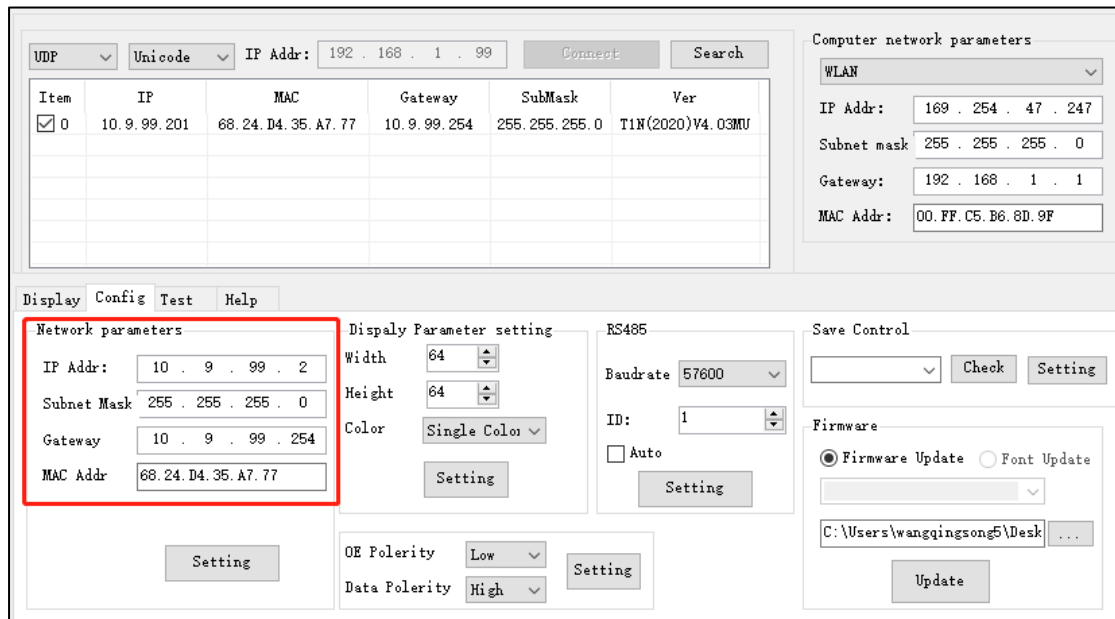
2. After search control panel success, go to Config, find Network parameters interface, input the IP information you allot for the screening

IP Addr: you allot for screening

Subnet Mask: you allot for screening

Gateway: you allot for screening


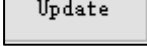
MAC Addr: same with the MAC of screening information you search out



After input all the parameters, click  to set IP and MAC information into screening

### Upgrade firmware for display screening

1. After search control panel success, go to Config, select Firmware

Update, click  to select firmware file, then click  to update firmware

UDP Unicode IP Addr: 192 . 168 . 1 . 99 Connect Search

Item	IP	MAC	Gateway	SubMask	Ver
<input checked="" type="checkbox"/> 0	10.9.99.201	68.24.D4.35.A7.77	10.9.99.254	255.255.255.0	T1N(2020)V4.03MU

Computer network parameters

WLAN ▼

IP Addr: 169 . 254 . 47 . 247

Subnet mask: 255 . 255 . 255 . 0

Gateway: 192 . 168 . 1 . 1

MAC Addr: 00.FF.C5.B6.8D.9F

---

Display Config Test Help

Network parameters

IP Addr: 10 . 9 . 99 . 2

Subnet Mask: 255 . 255 . 255 . 0

Gateway: 10 . 9 . 99 . 254

MAC Addr: 68.24.D4.35.A7.77

Setting

Display Parameter setting

Width: 64 ▲▼

Height: 64 ▲▼

Color: Single Color ▼

Setting

RS485

Baudrate: 57600 ▼

ID: 1 ▲▼

Auto

Setting

Save Control

▼ Check Setting

Firmware

Firmware Update  Font Update

▼

C:\Users\wangqingsong5\Desktop\...

Update