

How to set parameters for display screening

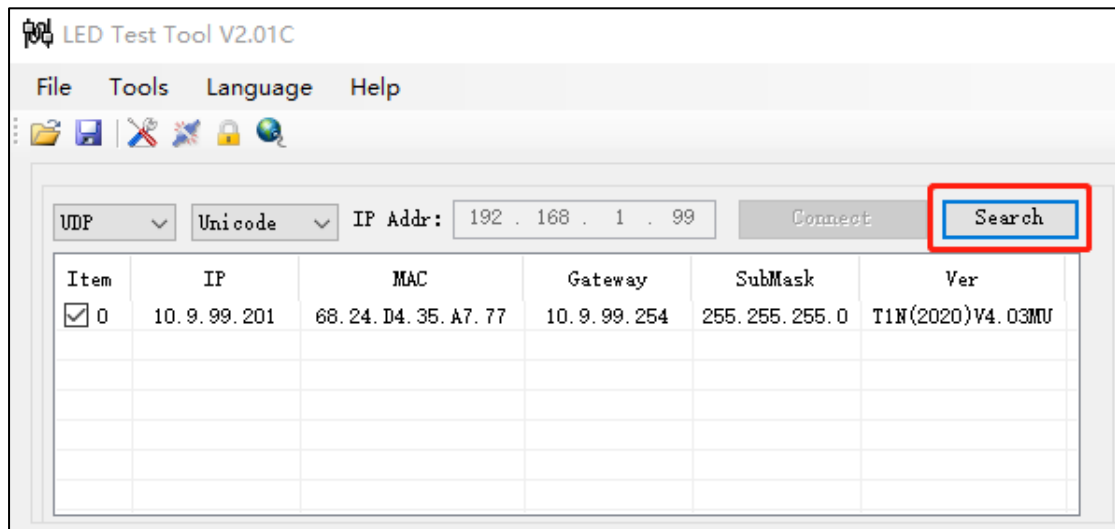
Applicable to

Device: E&E Screening (Multi-language control panel)

Configuration Tool: LED Test Tool V2.01C

Configuration for display screening

1. Click Search, search control panel



2. After search control panel success, go to Config, set parameters as follows:

Parameters for screen of **two** rows:

Width: 64

Height: 32

Color: Two Colors

OE Polarity: Low

Data Polarity: Low

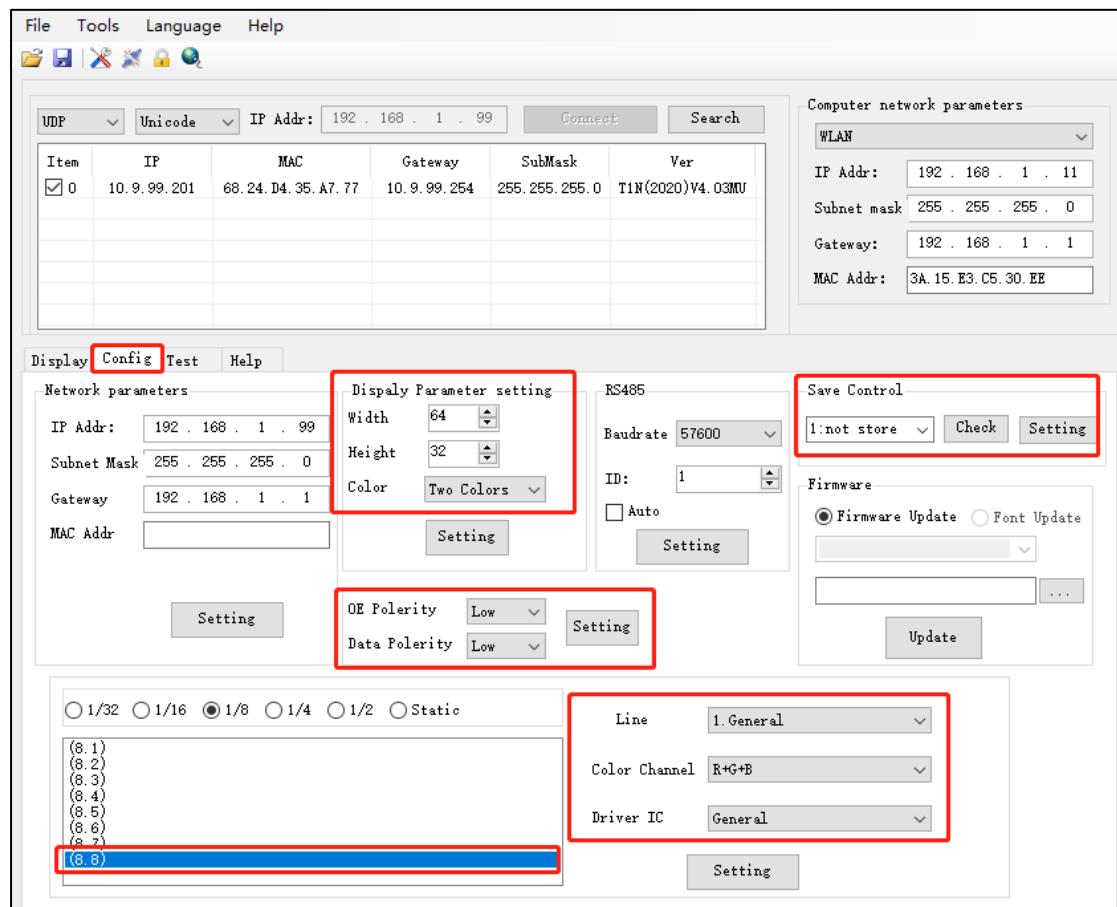
Save Control: 1: not store

Line: 1.General

Color Channel: R+G+B

Driver IC: General

Scan mode: 8.8



Parameters for screen of **four** rows:

Width: 64

Height: 64

Color: Two Colors

OE Polarity: Low

Data Polarity: Low

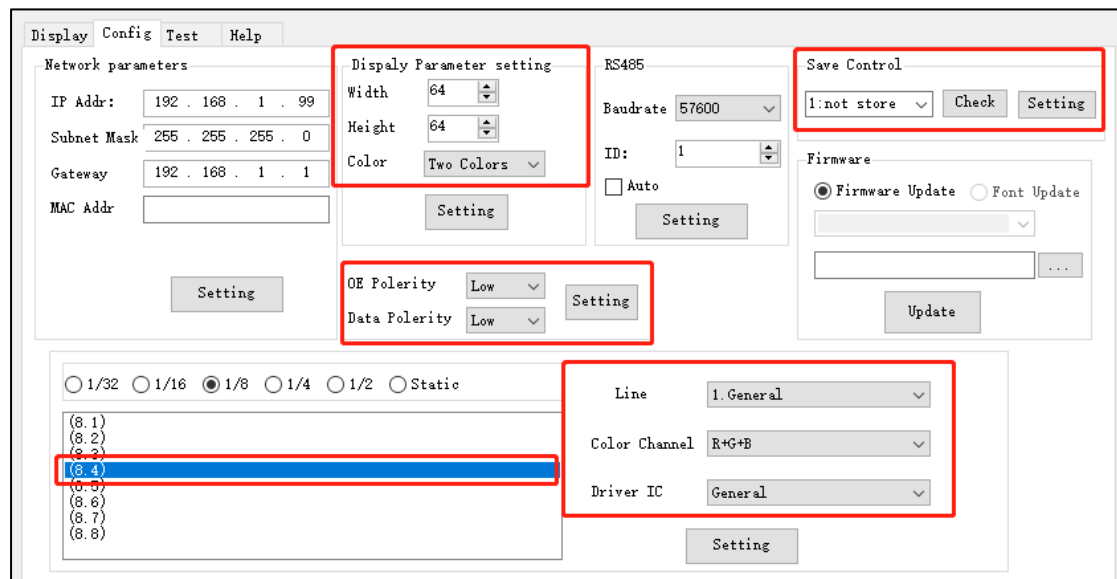
Save Control: 1: not store

Line: 1.General

Color Channel: R+G+B

Driver IC: General

Scan mode: 8.4



Click **Setting** to set parameters into screen

3. Go to Display, you can input content what you want, then click **Instant Mess** to send message to screen, to check if the screen can display normal or not.

Display Config Test Help

<input checked="" type="checkbox"/>	sx: 0	sy: 0	String	Still Display	16	Speed 10	test
	ex: 64	ey: 16	Red		Hold 5		
<input checked="" type="checkbox"/>	sx: 0	sy: 16	String	Still Display	16	Speed 10	thanks
	ex: 64	ey: 32	Red		Hold 5		
<input type="checkbox"/>	sx: 0	sy: 32	String	Still Display	16	Speed 10	
	ex: 64	ey: 48	Red		Hold 5		
<input type="checkbox"/>	sx: 0	sy: 48	String	Still Display	16	Speed 10	
	ex: 64	ey: 64	Red		Hold 5		

Add Message Instant Mess Instant Stop