

HIKVISION EUROPE

Monthly External Technical Newsletter

CONTENTS

New Firmware / Software Release
Product Change / FAQ / Tool Chart
Technical Video Update

Feb 2020

- New Firmware / Software Release
 - [GO Platform IP Camera V5.5.87](#)
 - [Hik-Connect V4.1.0 \(IOS & Android\)](#)
- Product Change Notification
 - [DS-2CD27XXFWD & DS-2CD37XXFWD \(Black\) IP Camera](#)
 - [DS-2DFXXXX \(T3\) PTZ Camera](#)
 - [DS-2CD6425G0F IP Camera](#)
 - [DS-2CD6425G0/F IP Camera](#)
- FAQ / Tool Chart/ Technical Video Update
 - [Hikvision Performance Videos on YouTube](#)
 - [Hikvision Explains Live Training Videos](#)
 - [How-to Videos on YouTube](#)

G0 Platform IP Camera V5.5.87

The latest firmware version of G0 Platform IP Camera V5.5.87 build200103 has been released.

Compatible Models

DS-2CD1X43G0, DS-2CD1X53G0, DS-2X41G1-IDW,
DS-2X51G1-IDW, DS-2CD2047G1 Series

New Features

1. Improve the auto-focus effect of motorized lens camera;
 2. Adjust the number of video, picture and log search items from 2000 to 1000;
- For more details please refer to the release note.

Location

You can find the firmware and release note on Portal:

<http://www.hikvisioneurope.com/portal/?dir=portal/Technical%20Materials/00%20%20Network%20Camera/00%20%20Product%20Firmware/G0%20platform%281X43G0%201X53G0%202X47G3E%202X4%2751G1-IDW1%272%29/V5.8.87%20build200103>



Hik-Connect V4.1.0 (Android & iOS)

The latest Hik-Connect version V4.1.0 for Android and iOS has already been released

New Features

1. Supports enabling/disabling audio and strobe light alarm for the Floodlight camera.
2. Supports displaying the account (email address or mobile phone number) to which a device has been added to when the user tries adding the device to a new account. In this way, the user will be able to know which account the device is currently added to.
3. Supports displaying information to remind the user to register a formal account when he/she log in to his/her visitor account if he/she has added devices to the visitor account.
3. Support more functionality for Axiom security control panel
 - Support checking system faults, tampering alarm fault, zone faults, etc.
 - Support wireless device supervision, system fault report, etc.
 - Support adding network camera to Axiom security control panel



Optimization

1. Optimized the UI design of the device sharing functionality.
 - Optimized the entry of the device sharing functionality to make it more obvious and easy to use.
 - Optimized the prompt information on the Add Recipient page.
2. Optimized the video intercom functionality.
 - Supports viewing live video streamed from the camera linked to the door station.
 - Supports zooming in/out the live images.
 - Supports switching the live video between landscape mode and portrait mode.
 - Supports capturing pictures during live view.
 - Supports recording during live view.
 - Supports enabling/disabling two-way audio.
 - Supports playing back the video footage from the camera linked to the door station.
 - Supports opening and closing door linked to the door station.
 - Supports viewing the events related to the door station in the latest 7 days (the current day events will be displayed by default) and switching dates to display the events of the selected date.
 - Supports viewing the call logs.
 - Supports switching the live videos streamed from different door stations' cameras.
3. Moved the switch for enabling EN50131 Compliant mode to the Device Information page.

For more details please refer to the Released Notes

Location

For IOS: App Store

For Android:








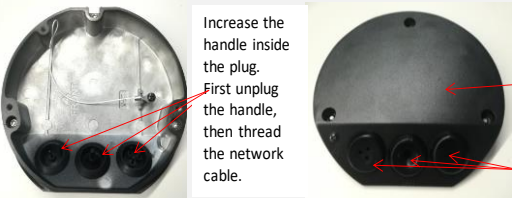
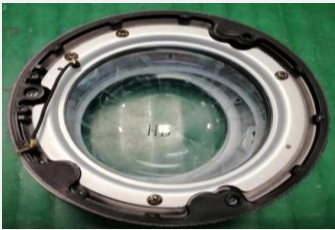



1. Access to the domain directly: <https://www.me-app.net/HikvisionAppStore>
2. Enter Support-Tools-Hikvision App Store Through the official website <http://www.hikvision.com/en>
3. Scans the app download QR code in the equipment packaging box / QSG/ local GUI of the device.

DS-2CD27XXFWD & DS-2CD37XXFWD (Black) IP Cameras

Reason of Change

27xx/37xx Dome appearance structure upgrade

Description of Change

Change Before	Change After
	 <p>Change the line hole to a threaded hole.</p> <p>Add triangle alignment labels</p>
	 <p>The sealing ring is fixed on the pedestal, which is not easy to fall off during installation.</p>
	
	 <p>Increase the handle inside the plug. First unplug the handle, then thread the network cable.</p> <p>Alter structure of junction box</p> <p>Three plugs.</p>
	 <p>Sealing ring modification</p> <p>Change location of locating column</p>
	

DS-2DFXXXX (T3) PTZ Camera

Reason of Change

Packaging upgrade.

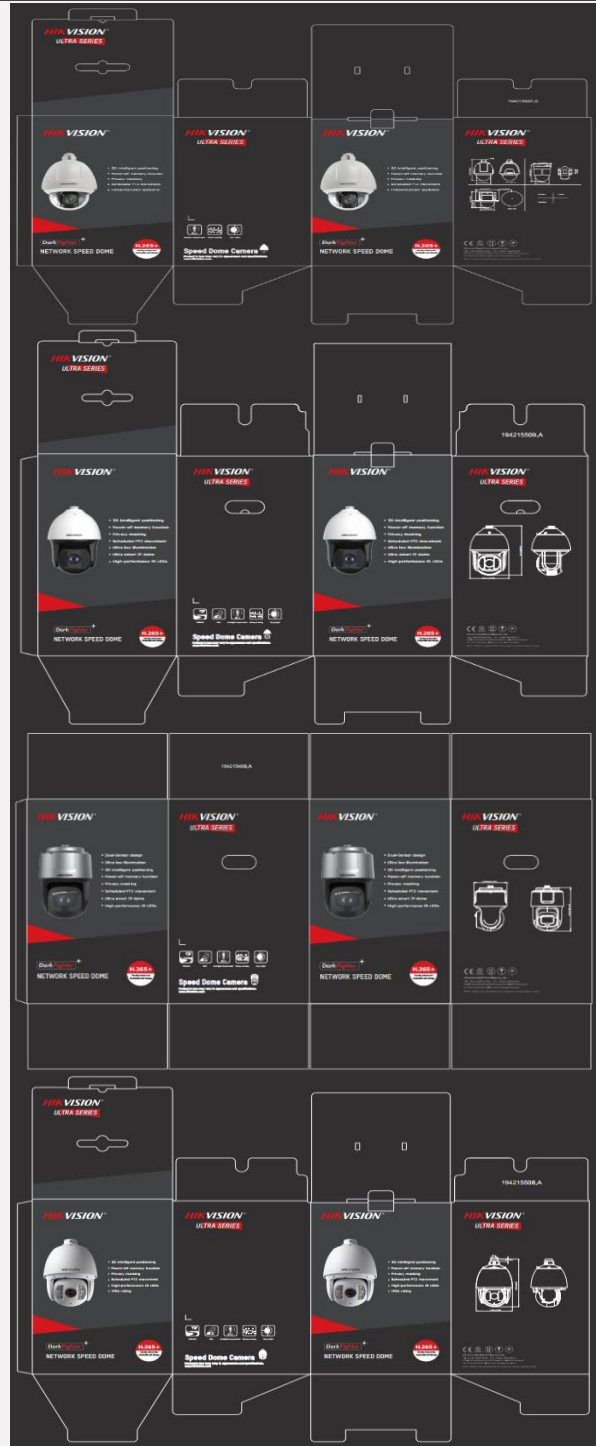
Description of Change

Package material upgrade to black color package.

Change Before



Change After



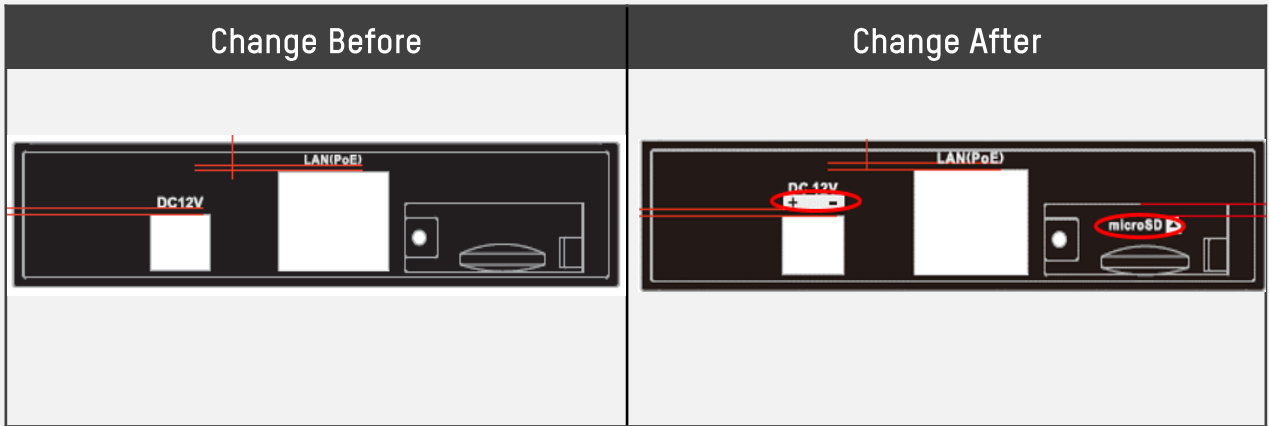
DS-2CD6425G0F IP Camera

Reason of Change

Modify the silk screen on the bezel.

Description of Change

Add the silk screen to explain the position of SD card and positive and negative. poles of the power



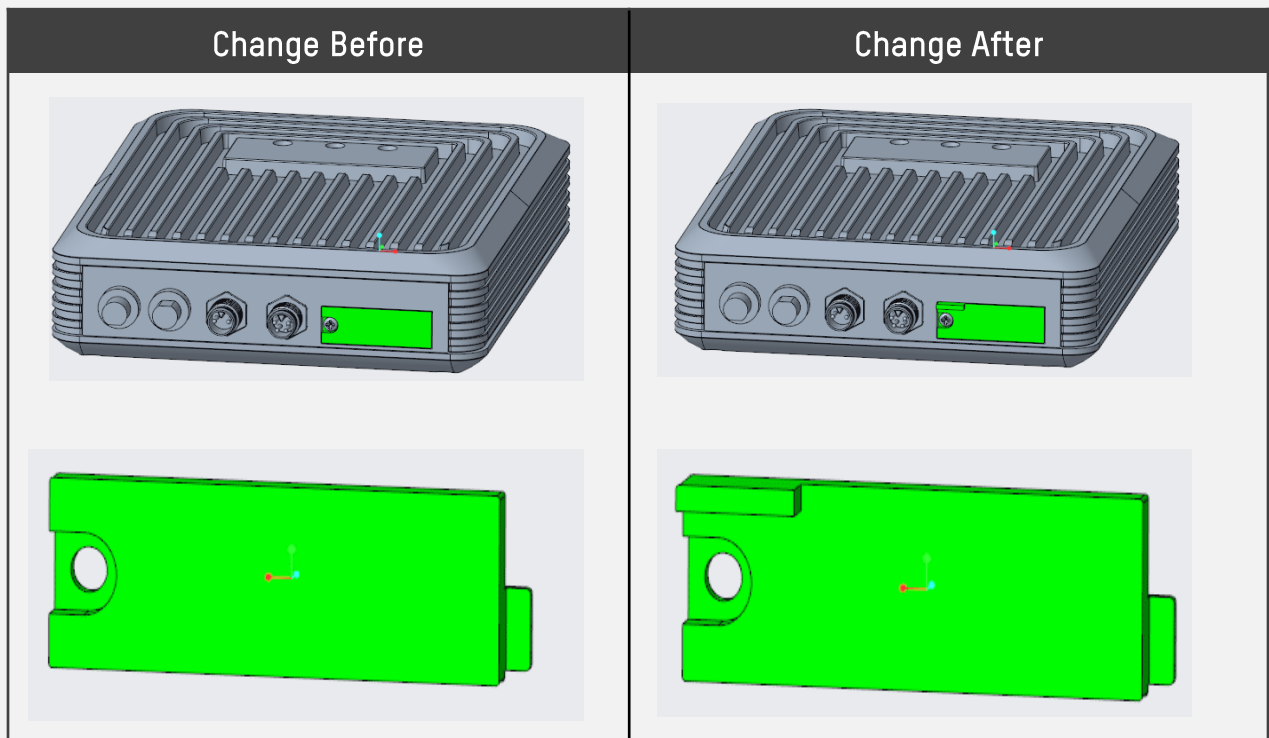
DS-2CD6425G0/F IP Camera

Reason of Change

Improved usability, increased handle, easy to open.

Description of Change

Increased handle on the memory card slot cover.



Hikvision Performance Videos on YouTube

Hikvision New People Counting Camera Performance

Hikvision new people counting camera helps to improve your business with much reliable people counting performance.



Main Features

- ✓ 1920 × 1080 @ 30fps
- ✓ Dual Channels Colorful Images
- ✓ Binocular Stereo Vision
- ✓ Deep Learning Algorithm
- ✓ Reverse Alarm
- ✓ H.265, H.265+
- ✓ IR Up To 6 Meters

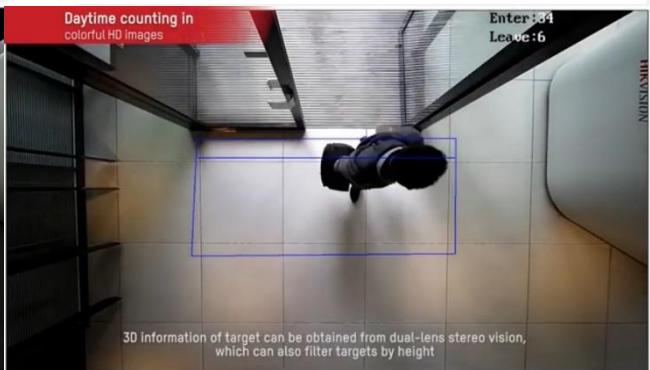
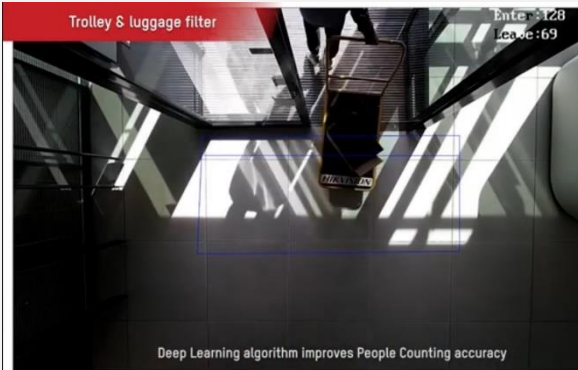


New People Counting camera

- 1920 × 1080 @ 30fps
- Dual channel colorful images
- Binocular Stereo Vision
- Deep Learning algorithm
- Reverse alarm
- H.265, H.265+
- IR up to 6 meters



DS-2CD6825G0/C-IS



Location

You can find the performance video via below link:

<https://youtu.be/pJolK5Tk9Z4>

Hikvision Explains Live Training Videos

LED Solution

Main Content

- ✓ Introduction of LED Product
- ✓ Product Performance and Unboxing
- ✓ LED Controller and Bracket
- ✓ Video Wall Controller Operation
- ✓ Inventory
- ✓ Successful Case



Location

You can find the training video via below link:

<https://vimeo.com/389959571/6895d5da17>

How-to Video on YouTube

DS-KV8113 2nd generation villa door station installation



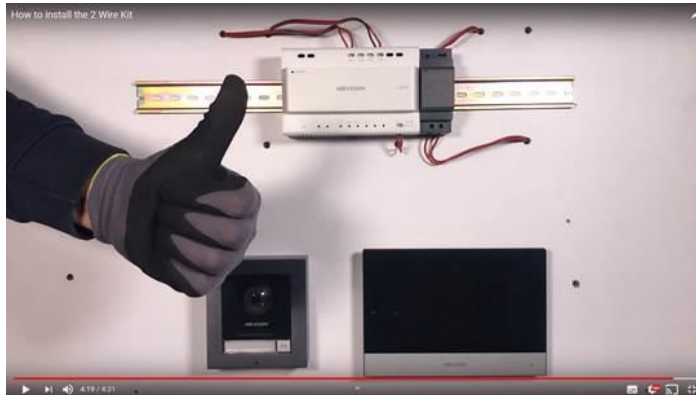
Location

You can find the training video via below link:

<https://youtu.be/qeer5ezVHiY>

How-to Video on YouTube

DS-KIS702 2-wire kit installation



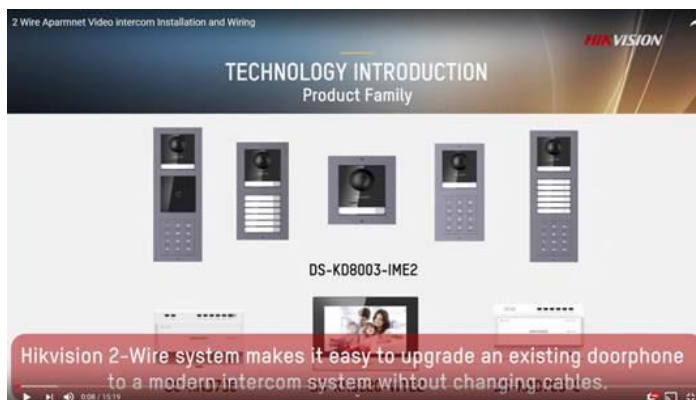
Location

You can find the training video via below link:

<https://youtu.be/F4vo74KKEig>

How-to Video on YouTube

2-wire system installation and connection



Location

You can find the training video via below link:

<https://youtu.be/kgGIHVNTjc>

END

THANK YOU!

In case you have any questions regarding the content of this newsletter, please address it to product.eu@hikvision.com.