

# *HIKVISION EUROPE*

## Monthly External Technical Newsletter

### CONTENTS

---

New Firmware / Software Release  
Product Change / FAQ / Tool Chart  
Technical Video Update

Aug 2019

- New Firmware / Software Release
  - [G1 Platform IP camera V5.6.2](#)
  - [H3 Platform PanoVu camera V5.5.32](#)
  - [DS-K1T606/605/8105 Access Control Terminal V1.2.1](#)
  - [DS-K1T804 Access Control Terminal V1.2.1](#)
  - [DS-K1A802 Time and Attendance Terminal V1.2.1](#)
  - [DS-K1T607 Access Control Terminal V1.0.1](#)
  - [DS-K1T8003 Access Control Terminal V1.2.1](#)
  - [Hik-Connect V3.10.0 \(IOS & Android\)](#)
  - [DS-6900 Series Decoder V2.4.0](#)
  - [DS-1600KI\(B\) Network Keyboard V3.2.2](#)
  - [DS-1100KI\(B\) Network Keyboard V4.0](#)
- Product Change Notification
  - [DS-2CD6626B/E Anti-corrosion Camera](#)
  - [DS-2DE2AX04 PTZ Camera](#)
  - [DS-2DF8XXX PTZ Camera](#)
  - [DS-2CD17XX IP Camera](#)
  - [iDS-2PT9144 PanoVu Camera](#)
- FAQ / Tool Chart/ Technical Video Update
  - [Hikvision Technical Videos on YouTube](#)

## G1 Platform IP Camera V5.6.2

The latest V5.6.2 firmware build 190701 for G1 Platform IP Camera has been released.

### Compatible Models

DS-2CD2XXX, DS-2CD3XXX, DS-2XM67XX Series



### New Features

1. Fixed the issue that port mapping only take effect after rebooting device. (Port of Enhanced SDK service, WebSocket, WebSockets)
2. Fixed the issue that only 80GB capacity of NAS storage are available when camera mount to NAS server (more than 80GB) and enable overwrite.

For more details please refer to the release note.

### Location

You can find the firmware and release note on Portal:

[http://www.hikvisioneurope.com/portal/?dir=portal/Technical%20Materials/00%20%20Network%20Camera/00%20%20Product%20Firmware/G1%20platform%20%28H.265%20DS-2CD2XX5%2C2XX3%2C3XX3%2C3XX5%2CXM67X6%29/2XX5%202XX3%203XX5%203XX3%20XM67X6%28non-Fisheye%29%20Multilanguage/V5.6.2\\_Build190701](http://www.hikvisioneurope.com/portal/?dir=portal/Technical%20Materials/00%20%20Network%20Camera/00%20%20Product%20Firmware/G1%20platform%20%28H.265%20DS-2CD2XX5%2C2XX3%2C3XX3%2C3XX5%2CXM67X6%29/2XX5%202XX3%203XX5%203XX3%20XM67X6%28non-Fisheye%29%20Multilanguage/V5.6.2_Build190701)

## H3 Platform PanoVu Camera V5.5.32

The latest V5.5.32 firmware build 190626 for H3 Platform PanoVu Camera has been released.

### Compatible Models

DS-2CD6DX4 Series

### New Features

1. 4 channels are supported to access to Hik-Connect for previewing
2. Newly release model: DS-2CD6D54G1-IZ(S)(2.8-8mm), DS-2CD6D54G1-ZS/RC(2.8-8mm).
3. Support Ehome5.0
4. Update the algorithm of motion detection
5. Support ONVIF1812
6. Support Smart IR

For more details please refer to the release note.

### Location

You can find the firmware and release note on Portal:

[http://www.hikvisioneurope.com/portal/?dir=portal/Technical%20Materials/00%20%20Network%20Camera/00%20%20Product%20Firmware/H3%20platform%285xxx%2C7xxx%2C6924%2C6DX4%2C8426%29/DS-2CD6DX4/V5.5.32\\_Build190626](http://www.hikvisioneurope.com/portal/?dir=portal/Technical%20Materials/00%20%20Network%20Camera/00%20%20Product%20Firmware/H3%20platform%285xxx%2C7xxx%2C6924%2C6DX4%2C8426%29/DS-2CD6DX4/V5.5.32_Build190626)



## DS-K1T606/605/8105 Face Recognition Terminal V1.2.1

The latest firmware V1.2.1 build 190724 for K1T606/605, V1.0.1 build 190724 for K1T8105 Terminal has been released.

### Compatible Models

DS-K1T606M,DS-K1T606MF

DS-K1T605E,DS-K1T605EF,DS-K1T605M,DS-K1T605MF,DS-K1T605MF-B

DS-K1T8105E,DS-K1T8105M

### Improved Features

1. Directly quit virtual keypad interface by click any blank part of screen, no need to click down arrow icon.
2. Add "return" icon on attendance status select interface.
3. Optimize local authentication result display time;
4. Improve device log recording;
5. Improve time zone and DST setting;
6. Fix known bugs.

For more details please refer to the release note.

### Location

You can find the firmware and release note on Portal:

DS-K1T606:

[http://www.hikvisioneurope.com/portal/?dir=portal/Technical%20Materials/06%20%20Access%20Control/00%20%20Product%20Firmware/Terminal/DS-K1T606/V1.2.1\\_build190724](http://www.hikvisioneurope.com/portal/?dir=portal/Technical%20Materials/06%20%20Access%20Control/00%20%20Product%20Firmware/Terminal/DS-K1T606/V1.2.1_build190724)

DS-K1T605:

[http://www.hikvisioneurope.com/portal/?dir=portal/Technical%20Materials/06%20%20Access%20Control/00%20%20Product%20Firmware/Terminal/DS-K1T605/V1.2.1\\_build190724](http://www.hikvisioneurope.com/portal/?dir=portal/Technical%20Materials/06%20%20Access%20Control/00%20%20Product%20Firmware/Terminal/DS-K1T605/V1.2.1_build190724)

DS-K1T8105:

[http://www.hikvisioneurope.com/portal/?dir=portal/Technical%20Materials/06%20%20Access%20Control/00%20%20Product%20Firmware/Terminal/DS-K1T8105/V1.0.1\\_build190724](http://www.hikvisioneurope.com/portal/?dir=portal/Technical%20Materials/06%20%20Access%20Control/00%20%20Product%20Firmware/Terminal/DS-K1T8105/V1.0.1_build190724)



## DS-K1T804 Access Control Terminal V1.2.1

The latest Firmware V1.2.1 build 190715 for DS-K1T804 Access Control Terminal has already been released

### Compatible Models

DS-K1T804F/MF/EF

### New Features

1. Support adding to Hik-Connect App for door control and device log checking
2. Fix some events uploading bugs
3. Modify some translation errors
4. Simplify some configuration steps

### Location

You can find the firmware and release note on Portal:

[http://www.hikvisioneurope.com/portal/?dir=portal/Technical%20Materials/06%20%20Access%20Control/00%20%20Product%20Firmware/Terminal/DS-K1T804/V1.2.1\\_build190715](http://www.hikvisioneurope.com/portal/?dir=portal/Technical%20Materials/06%20%20Access%20Control/00%20%20Product%20Firmware/Terminal/DS-K1T804/V1.2.1_build190715)



## DS-K1A802 Time and Attendance Terminal V1.2.1

The latest firmware V1.2.1 build190715 for DS-K1A802 Time and Attendance Terminal has been released.

### Compatible Models

DS-K1A802F/MF/EF

DS-K1A802F/MF/EF-B

### New Features

1. Fix some events uploading bugs
2. Modify some translation errors
3. Simplify some configuration steps

For more details please refer to the release note.

### Location

You can find the firmware and release note on Portal:

[http://www.hikvisioneurope.com/portal/?dir=portal/Technical%20Materials/06%20%20Access%20Control/00%20%20Product%20Firmware/Terminal/DS-K1A802/V1.2.1\\_build190715](http://www.hikvisioneurope.com/portal/?dir=portal/Technical%20Materials/06%20%20Access%20Control/00%20%20Product%20Firmware/Terminal/DS-K1A802/V1.2.1_build190715)



## DS-K1T607 Access Control Terminal V1.0.1

The latest firmware V1.0.1 build 190506 for DS-K1T607 Access Control Terminal has been released.

### Compatible Models

DS-K1T607E/EF/MW/MFW

DS-K1T607PE/PEF/PMW/PMFW

DS-K1T607TE/TEF/TMW/TMFW

### New Features

1. The Improve face anti-spoofing detection performance;
2. Fix face data applying bug;
3. Fix some bugs in local configuration menu.

For more details please refer to the release note.

### Location

You can find the firmware and release note on Portal:

[http://www.hikvisioneurope.com/portal/?dir=portal/Technical%20Materials/06%20%20Access%20Control/00%20%20Product%20Firmware/Terminal/DS-K1T607/V1.0.1\\_190506](http://www.hikvisioneurope.com/portal/?dir=portal/Technical%20Materials/06%20%20Access%20Control/00%20%20Product%20Firmware/Terminal/DS-K1T607/V1.0.1_190506)



## DS-K1T8003 Access Control Terminal V1.2.1

The latest firmware V1.2.1 Build190629 for DS-K1T8003 Access Control Terminal has been released.

### Compatible Models

DS-K1T8003F

DS-K1T8003EF

DS-K1T8003MF

### New Features

1. Fix some events uploading bugs
2. Modify some translation errors
3. Simplify some configuration steps

For more details please refer to the release note.

### Location

You can find the firmware and release note on Portal:

[http://www.hikvisioneurope.com/portal/?dir=portal/Technical%20Materials/06%20%20Access%20Control/00%20%20Product%20Firmware/Terminal/DS-K1T8003/V1.2.1\\_build190629](http://www.hikvisioneurope.com/portal/?dir=portal/Technical%20Materials/06%20%20Access%20Control/00%20%20Product%20Firmware/Terminal/DS-K1T8003/V1.2.1_build190629)



## Hik-Connect V3.10.0 (Android & iOS)

The latest Hik-Connect version V3.10.0 for Android and iOS has already been released

### New Features

1. Supports Axiom Hybrid.
2. Supports adding Wi-Fi cameras to the Mobile Client by scanning device QR code or manually entering the device serial
3. Supports downloading video footage and adjusting playback speed
4. Supports viewing the information of the alarms in the notification list even when Do Not Disturb mode is enabled (precondition: False Alarm Filter is enabled on the DVR).

### Optimization

1. Optimized the user interface for the Axiom security control panel.

For more details please refer to the Released Notes

### Location

You can download the latest Hik-Connect version on Google Play and App Store.



Hik-Connect

## DS-6900 Series Decoder V2.4.0

The latest firmware V2.4.0 for DS-6900 Series Decoder has been released.

### New Features

1. Support decode encryption stream
2. Support export USB log to local PC
3. Support record 16 stream from 4200 simultaneously

### Optimization

1. Optimize scene switching time
2. Optimize the background color configuration of the outlet
3. USB log add more information, switch window, dynamic decoding, split screen
4. Network card list display and panel interface to maintain the same

For more details please refer to the release note.

**Note:** the device support to be connected by SSH for remote checking problems. The user name is "root" and the password is the same as admin.

### Location

You can find the firmware and release note on Portal:

[http://www.hikvisioneurope.com/portal/?dir=portal/Technical%20Materials/08%20%20Transmission%26Display/01%20Product%20Firmware/Decoder/DS-6900%20Decoder/%E3%80%90DECODER\\_69UD\\_EN\\_2.4.0\\_190717%E3%80%91](http://www.hikvisioneurope.com/portal/?dir=portal/Technical%20Materials/08%20%20Transmission%26Display/01%20Product%20Firmware/Decoder/DS-6900%20Decoder/%E3%80%90DECODER_69UD_EN_2.4.0_190717%E3%80%91)



## DS-1600KI(B) Network Keyboard V3.2.2

The latest firmware V3.2.2 for DS-1600KI(B) Network Keyboard has been released.

### New Features

1. Support Hik-Central 1.4
2. Support camera pan-tilt control
3. Support playback on video wall
4. Support secondary screen display
5. Support 4K/30Hz for external monitor resolution
6. Support record stream through live view interface
7. Support decode ONVIF H.265 stream

For more details please refer to the release note.

**Note:** V2.2.0 does not support to upgrade to V3.2.2

### Location

You can find the firmware and release note on Portal:

<http://www.hikvisioneurope.com/portal/?dir=portal/Technical%20Materials/08%20%20Transmission%26Display/01%20Product%20Firmware/Keyboard/DS-1600KI/V3.2.2>



## 1100KI(B) Network Keyboard V4.0.2

The latest firmware V4.0.2 for 1100KI(B) Network Keyboard has been released.

### New Features

1. Support 4000 devices, 8000 IPCs, 16 auto-switch groups, 16 regions
2. Support 32 users (1 admin and 31 operators)
3. Change to 1024x600 capacitive touch screen
4. Support POE power supply
5. Support Hik-Central V1.4.0 TV wall function
6. Support instant Playback, Video Wall Playback
7. Support full series DVR/NVR/XVR output control switch (preview, playback, changes menu)



For more details please refer to the release note.

**Note:** System software does not support upgrade to each other, V3.xx version can only run on old hardware devices, V4.xx can only run on the new hardware devices

### Location

You can find the firmware and release note on Portal:

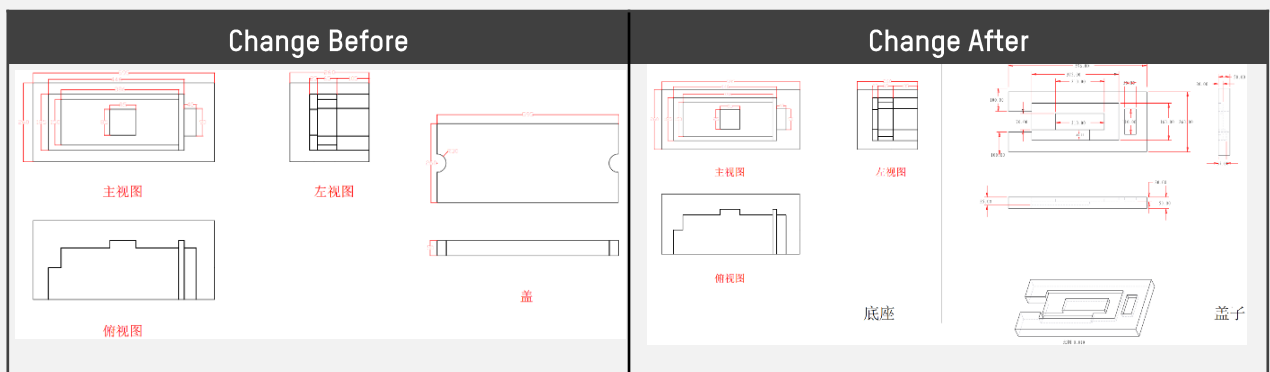
<http://www.hikvisioneurope.com/portal/?dir=portal/Technical%20Materials/08%20%20Transmission%26Display/01%20Product%20Firmware/Keyboard/DS-1100KI%28B%29>

## DS-2CD6626B/E Anti-corrosion Camera

### Reason of Change

Update and optimize EPE of anti-corrosion camera

### Description of Change





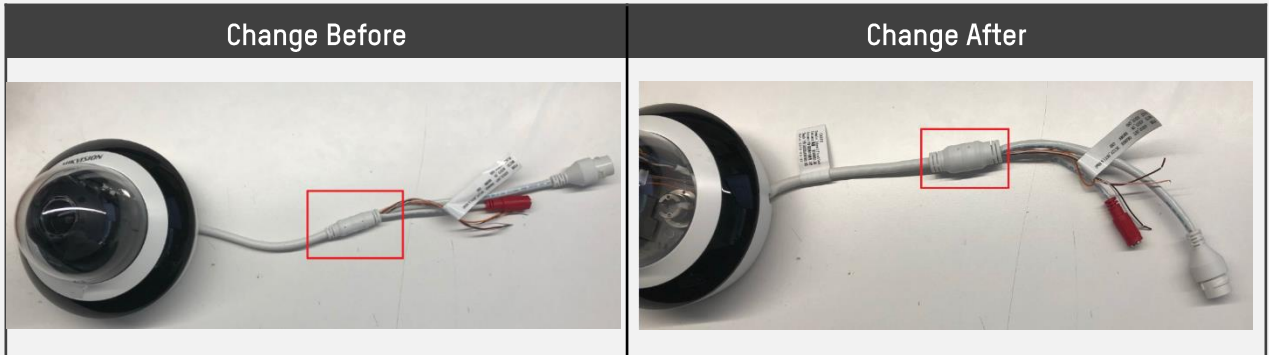
### DS-2DE2AX04 PTZ Camera

Reason of Change

Improve waterproof performance.

Description of Change

Optimize the structure of tail.



### DS-2DF8XXX PTZ Camera

Reason of Change

Product solution upgrade

Description of Change

The photo resistor is removed from the hardware, and the related functions are implemented by software



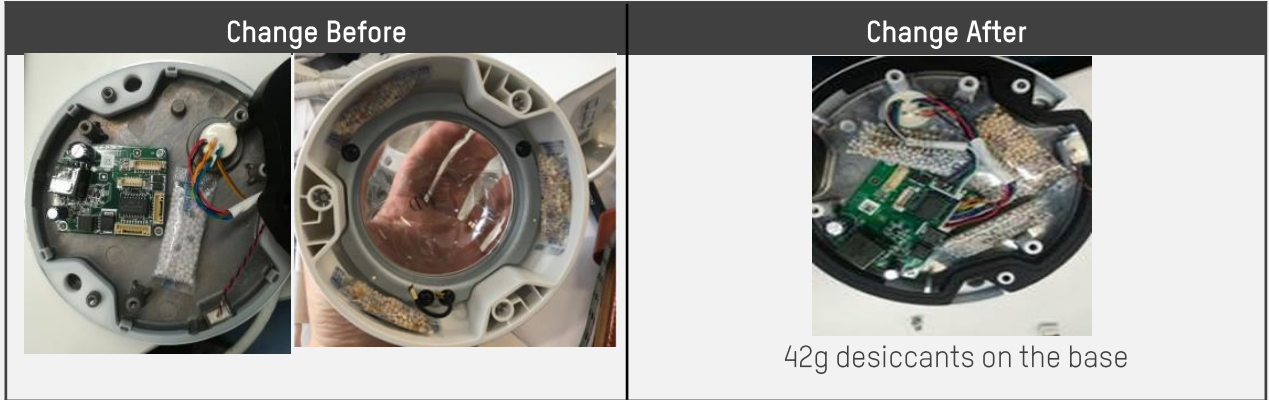
Product Change

DS-2CD17XX IP Camera

Reason of Change

Desiccant upgrade

Description of Change



iDS-2PT9144 PanoVu Camera

Reason of Change

Add heater function

Description of Change



## Hikvision Technical Videos on YouTube

Category	Video Name	YouTube Link
Radar	Introduction to Hikvision Security Radar	<a href="https://youtu.be/a4W1dV-tnxE">https://youtu.be/a4W1dV-tnxE</a>
AXHub	AXHub Unboxing & Setup video	<a href="https://youtu.be/Kzw7GwAmfnY">https://youtu.be/Kzw7GwAmfnY</a>
AXHub	How to configure AXHub	<a href="https://youtu.be/E8lw41fqK0A">https://youtu.be/E8lw41fqK0A</a>
AXHub	Introduction to Hikvision Wireless Alarm Kit	<a href="https://youtu.be/fzCgw07omXE">https://youtu.be/fzCgw07omXE</a>

END

**THANK YOU!**

In case you have any questions regarding the content of this newsletter, please address it to [product.eu@hikvision.com](mailto:product.eu@hikvision.com).