

iVMS-4200

Version:V2.6.0.3 build170119

Release Note

(2017-2-15External)

General Information

Software Version	V2.6.0.3 build20170119
Network SDK Lib	V5.2.6.30 build2017017
Play Lib	V7.3.2.74 build20161229
VCA Config Lib	V3.4.7.2 build20170118
SADP Lib	V4.2.1.4 build20161117

Supported devices:

Front-end, Back-end products, video intercom products, access control products, security control panels- : released before the end of October, 2016.

V2.6.0.3 Key Updates

1. Optimize the device classifications to provide better user experience. Hikvision Device include below device type:
Encoding Device/Door Station/Decoder (64 Series)/Storage Server/Indoor Station/Master Station/Security Control Panel/Access Controller.

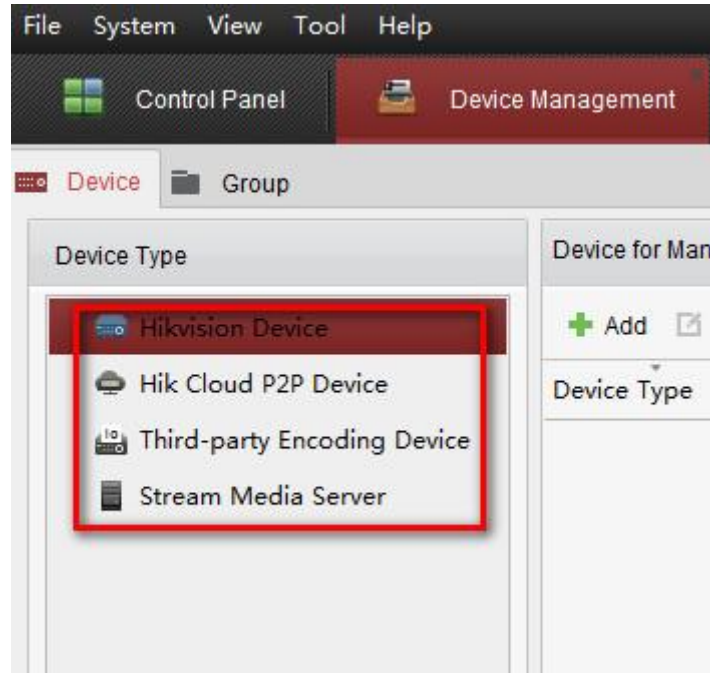


Figure 1

2. New design for module display, select the modules to display on the Operation and Control area of the control panel.

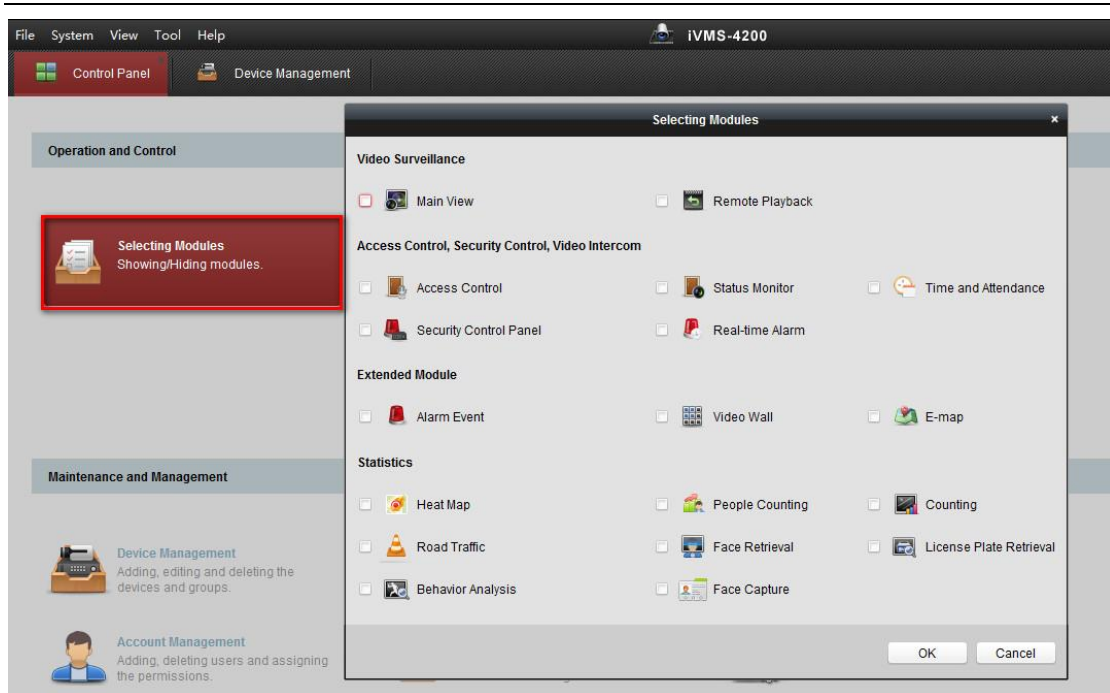


Figure 2

3. Optimize Access Control module (Figure3). And it includes the Video Intercom function (Figure4).

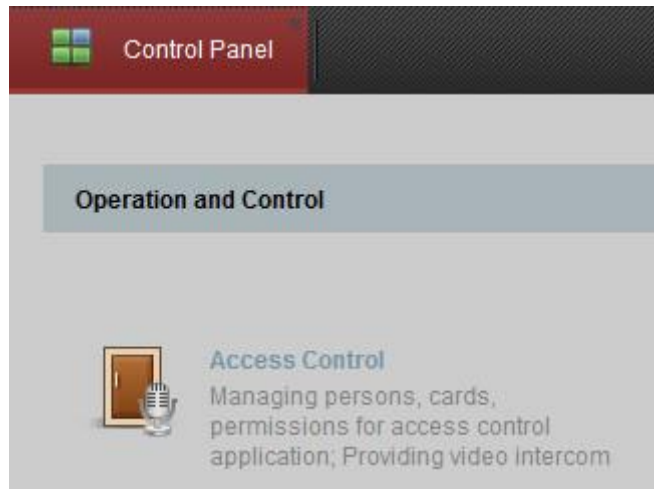


Figure3

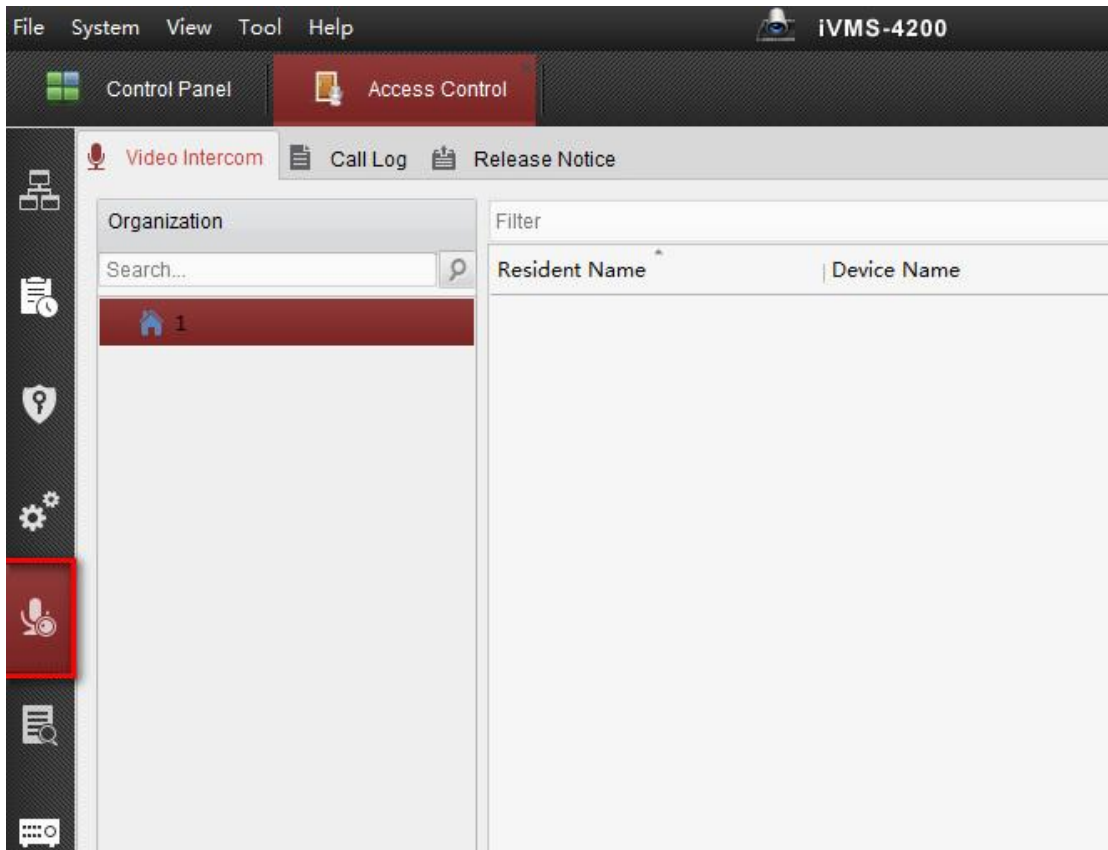


Figure4

4. Add Status Monitor module, it supports monitoring the door status, the card swiping record and the alarm.

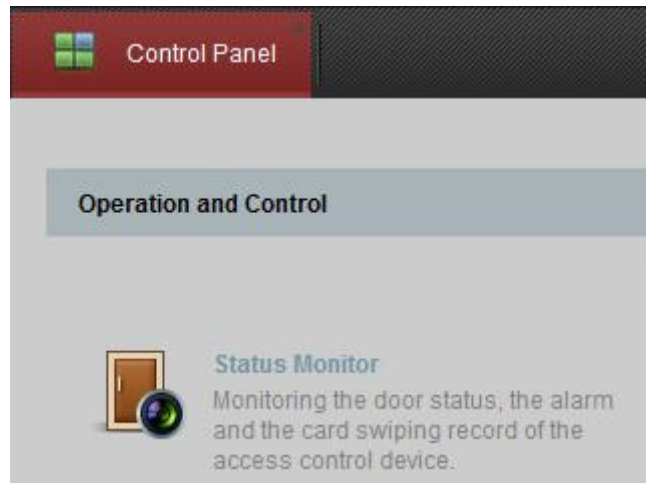


Figure 5

5. Add Time and Attendance module, it provides multiple functionalities, including shift schedule management, attendance handling, attendance statistics and other advanced functions.



Figure 6

6. Optimize the Security Control Panel function to provide better user experience. And Real-time Alarm module provides displaying the real-time alarm of security control panel, acknowledging alarms, and searching the history alarms.



Figure 7

7. In Event Management module, add Access Control Event, Access Control Alarm Input, Event Card Linkage, and Cross-Device Linkage settings.
8. Counting and Heat map function is supported for back-end products.



Figure 8

9. Add Playback Stream Type for the device which supports dual stream recording.

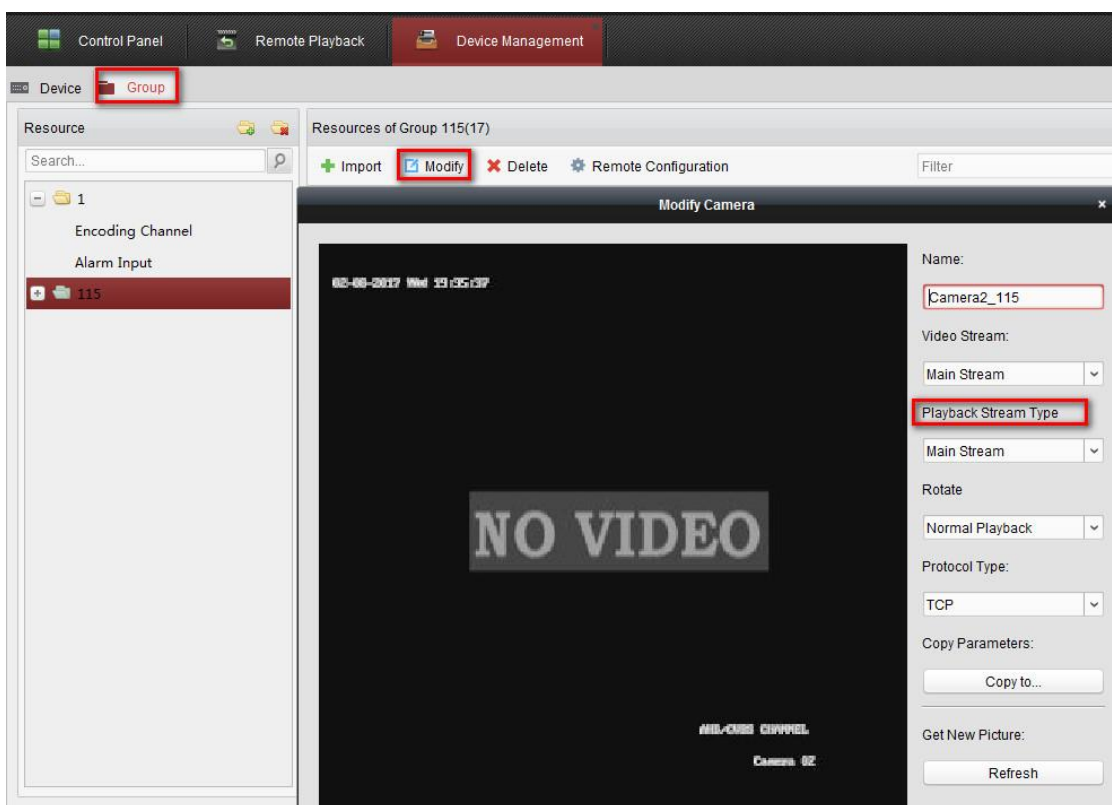


Figure 9

10. Support display temperature information on the live view and playback window and receiving alarm information for thermal device.
11. Support download player to record's saving directory when downloading the record files.

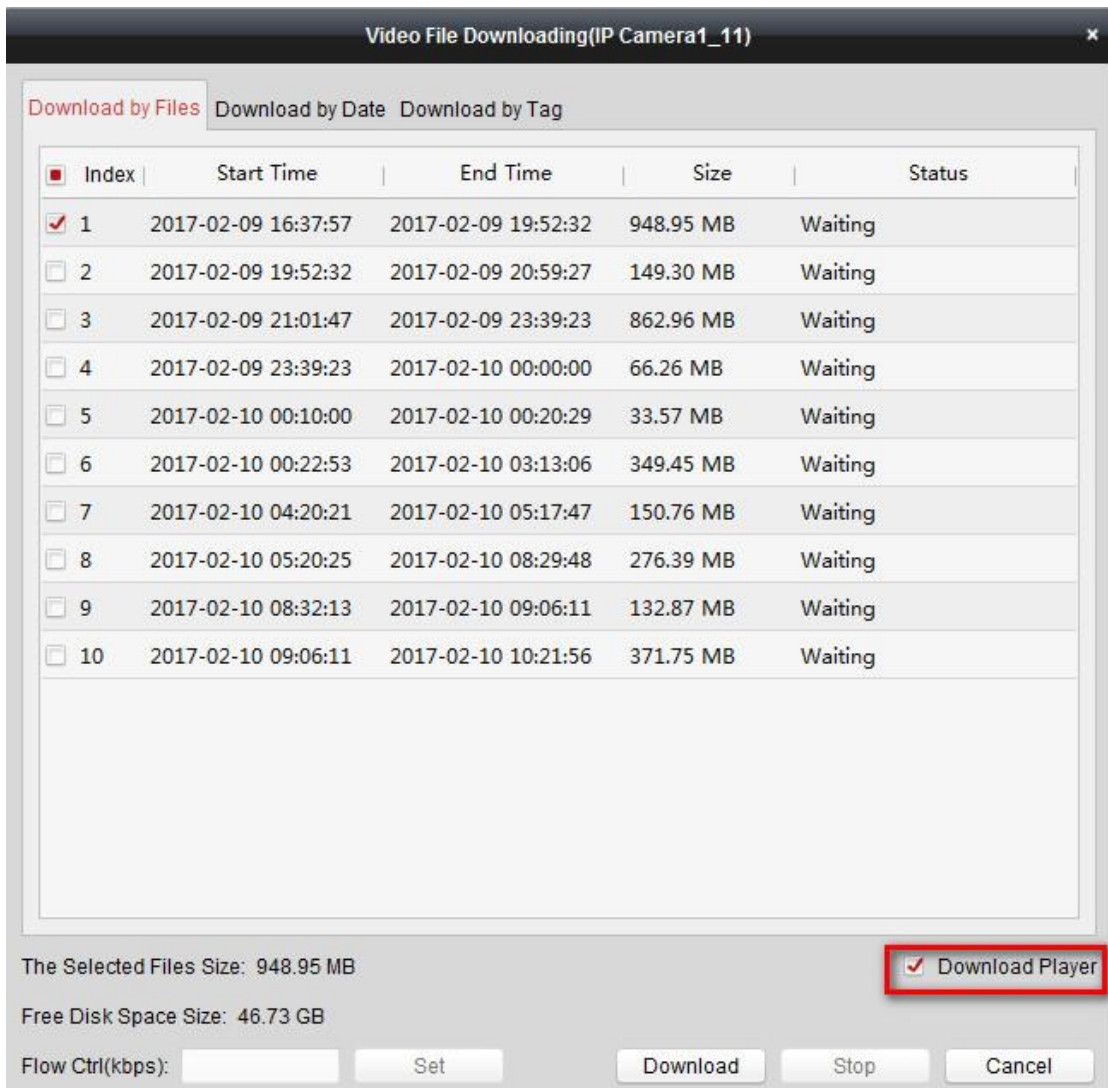


Figure 10

12. Support fisheye expansion in hardware decoding mode.
13. Support live view and playback function for DS-2DP1636-D in hardware decoding mode except the third stream. The number of connection of live view and playback is up to 6.

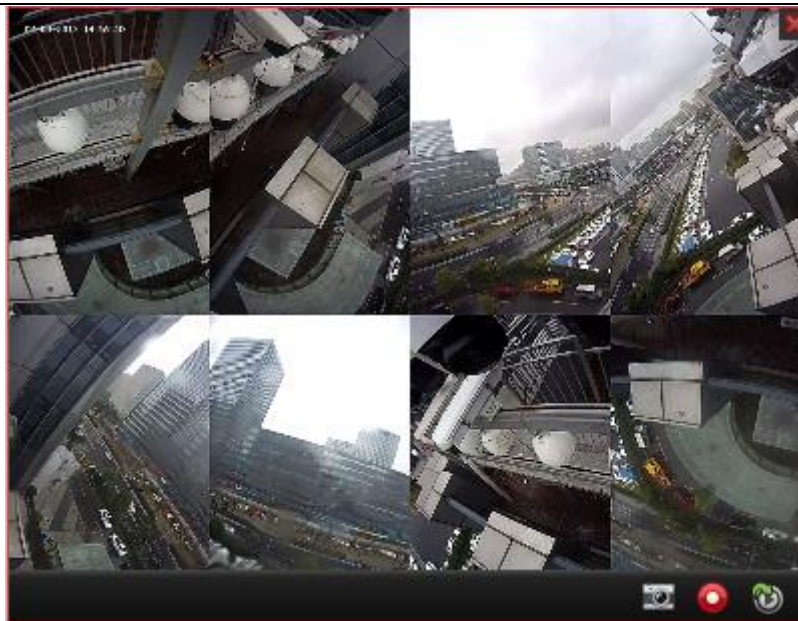


Figure 11



Figure 12

14. Support capturing the original image for DS-2DP1636-D in hardware decoding mode and in live view mode.
15. Add the selection of Enable Keyboard and Joystick.

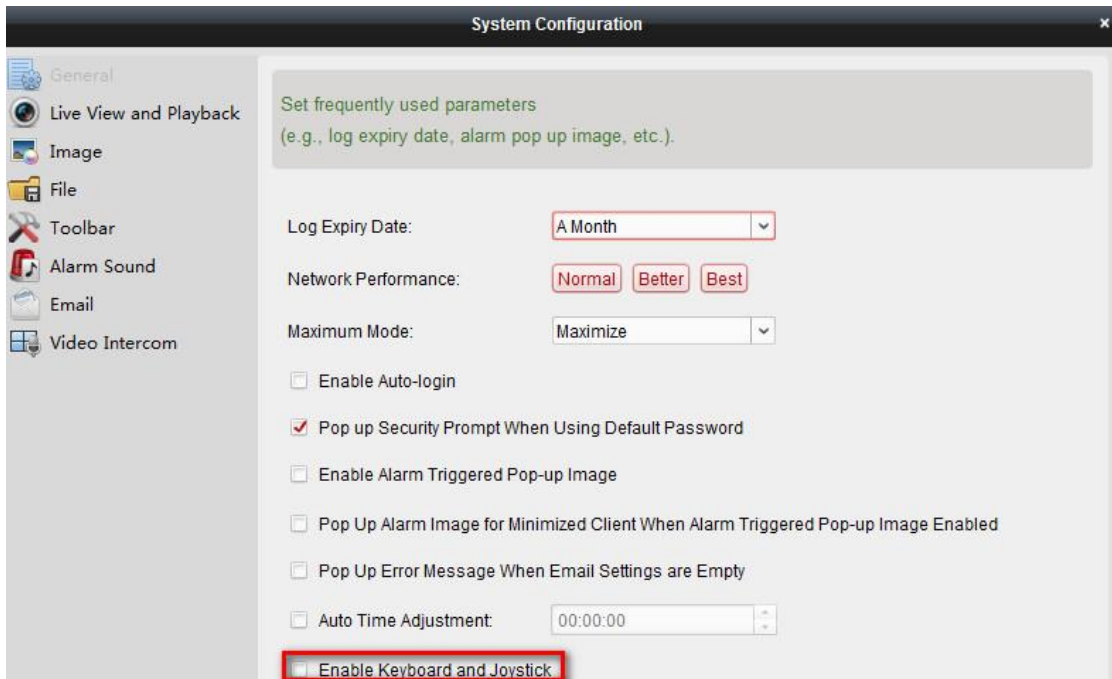


Figure 13

16. Set the schedule for backing up the system config file every week.

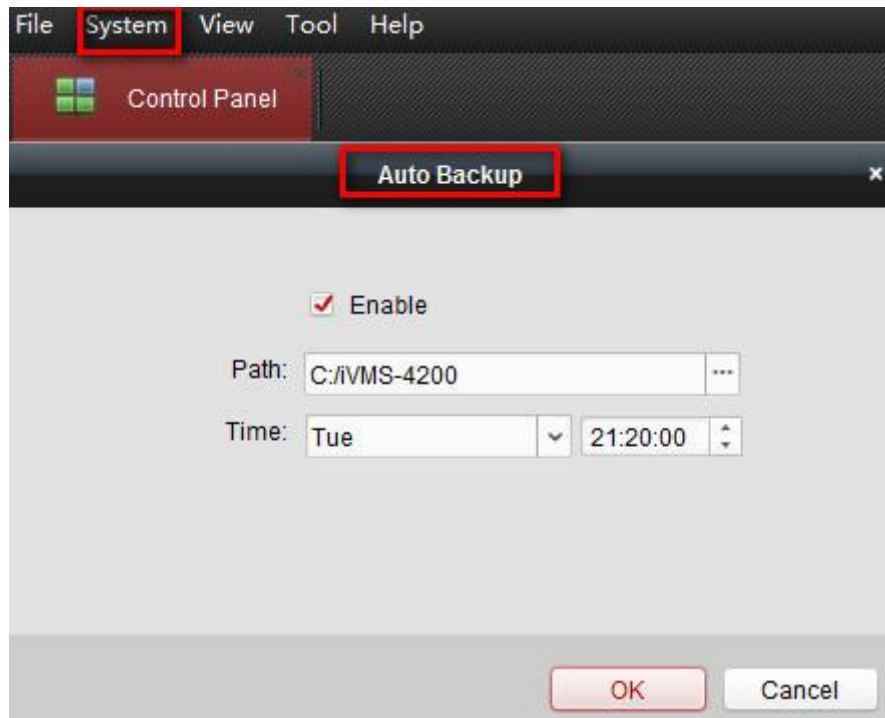


Figure 14