

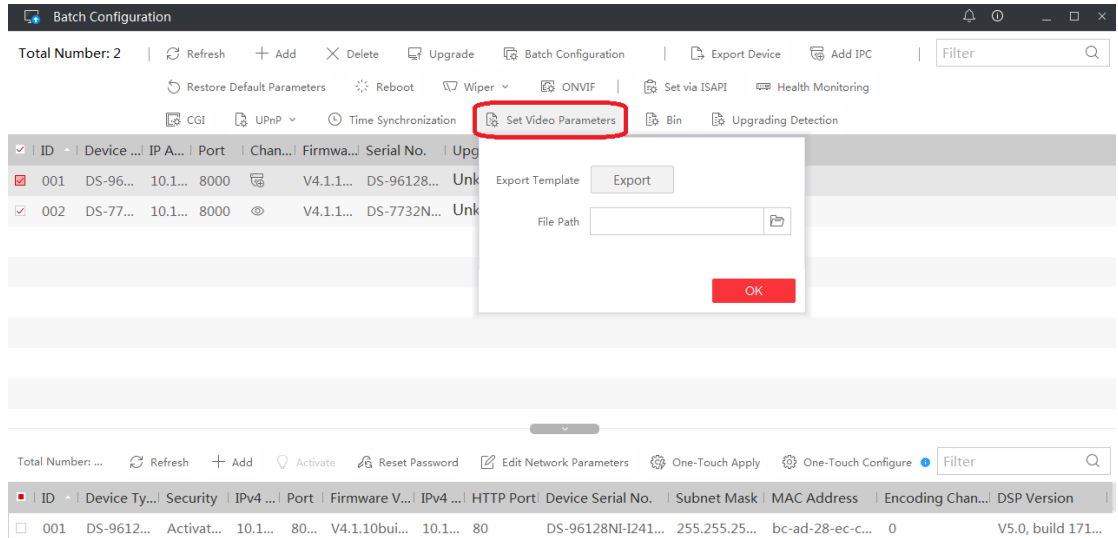
**BatchConfigTool V3.0.0.4**

**Release Notes**

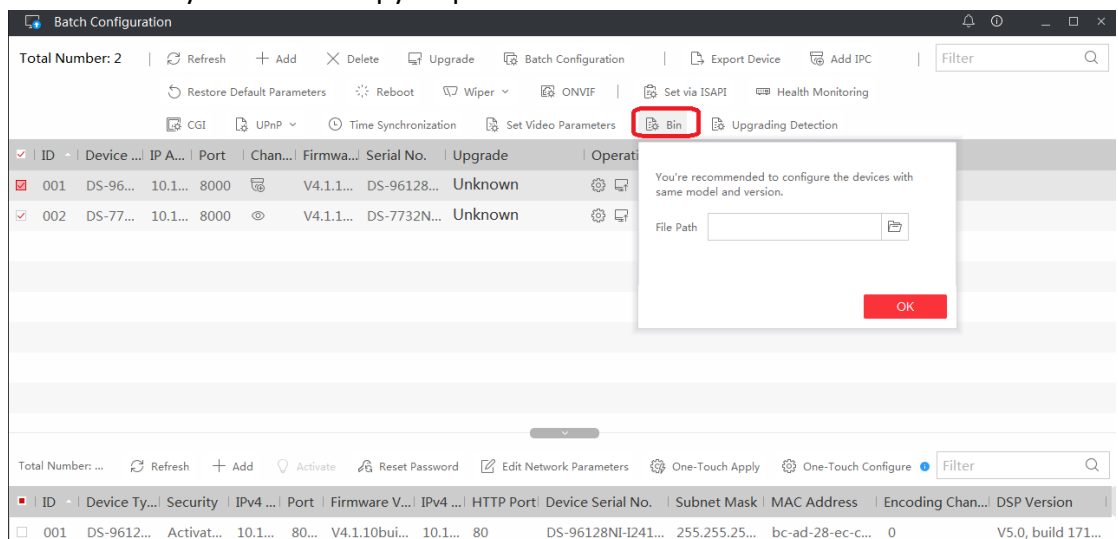
**(2018-6-8 )**

## V3.0.0.4 Key Updates

1. Support configuring the video parameters, such as stream type, resolution, bitrate, etc., for one or more devices by importing a CSV file.



2. Support setting system parameters by importing a bin file exported from a device which you want to copy its parameters.



### 3. Support setting device parameters via ISAPI protocol.

The screenshot shows the 'Batch Configuration' window with two tables. The top table lists two devices with 'Set via ISAPI' buttons highlighted in red. The bottom table shows detailed configuration for the first device.

ID	Device ...	IP A...	Port	Chan...	Firmwa...	Serial No.	Upgrade	Operation	Status
001	DS-96...	10.1...	8000		V4.1.1...	DS-96128...	Unknown		Online
002	DS-77...	10.1...	8000		V4.1.1...	DS-7732N...	Unknown		Online

ID	Device Ty...	Security	IPv4 ...	Port	Firmware V...	IPv4 ...	HTTP Port	Device Serial No.	Subnet Mask	MAC Address	Encoding Chan...	DSP Version
001	DS-9612...	Activat...	10.1...	80...	V4.1.10bui...	10.1...	80	DS-96128NI-I241...	255.255.25...	bc-ad-28-ec-c...	0	V5.0, build 171...

### 4. Support one-touch configuration for online devices.

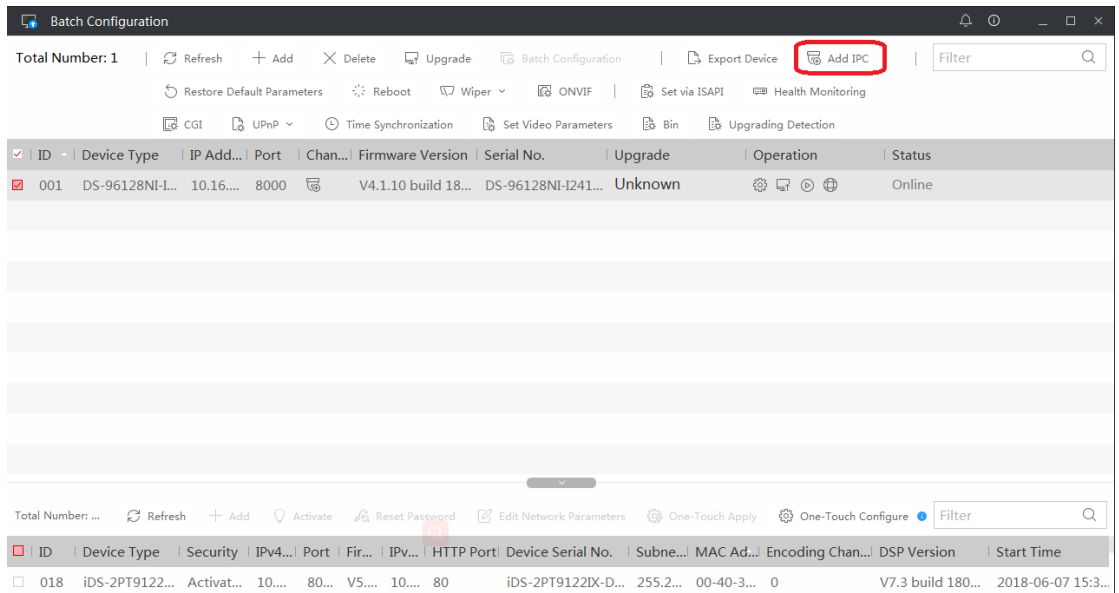
The screenshot shows the 'Batch Configuration' window with two tables. The top table lists two devices with 'One-Touch Apply' and 'One-Touch Configure' buttons highlighted in red. The bottom table shows detailed configuration for the first device.

ID	Device Type	IP A...	Port	Chan...	Firmwar...	Serial No.	Upgrade	Operation	Status
001	DS-96128NI-L...	10...	8000		V4.1.10...	DS-96128NI-I241...	Unknown		Offline
002	DS-7732NX-1...	10...	8000		V4.1.11...	DS-7732NX-I4/4...	Unknown		Offline

ID	Device Type	Security	IPv4 ...	Port	Firmware Version	IPv4 ...	HTTP Port	Device Serial No.	Subnet ...	MAC ...	Encoding Chan...	DSP Version	St
001	Blazer Pro/1...	Activat...	10.1...	80...	V4.1.10build 17...	10.1...	80	Blazer Pro/128/1...	255.255...	bc-ad...	0	V5.0, build 171...	20
002	DS-96128NI-...	Activat...	10.1...	80...	V4.1.10build 18...	10.1...	80	DS-96128NI-I241...	255.255...	bc-ad...	0	V5.0, build 171...	20

## 5. Support adding network cameras to NVR or hybrid DVR.



## 6. Support viewing and generating report of the health status including the device status (HDD, resource, and camera), network, and port.

