

<b>Title:</b>	DS-PEA How to configure SIP Server	<b>Version:</b>	v1.0	<b>Date:</b>	26/02/2019
<b>Product:</b>	DS-PEA Series Emergency Alarm Device			<b>Page:</b>	1 of 5

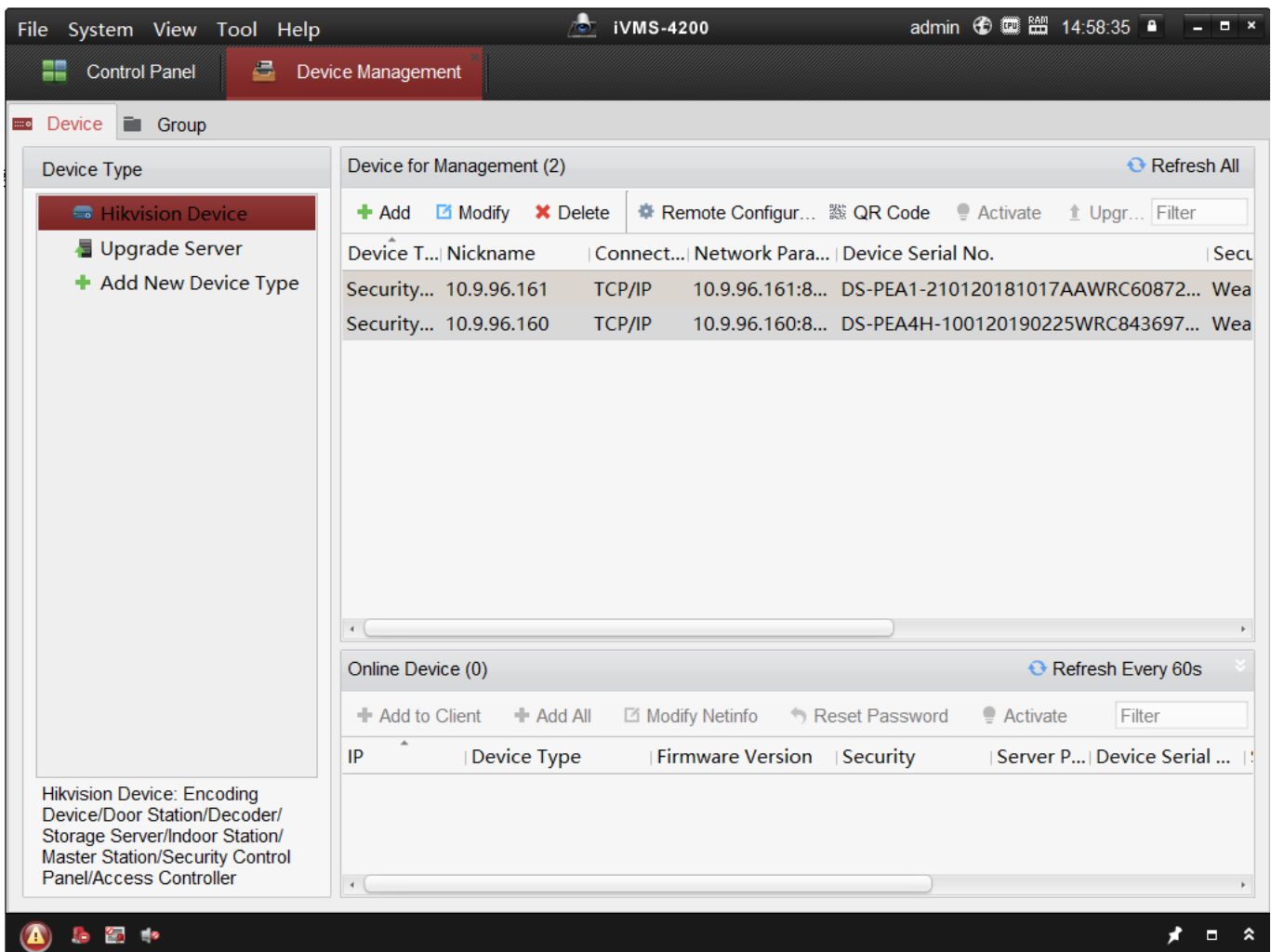
## Preparation

1. DS-PEA1-21 Panic Alarm Station, DS-PEA4H-10 Panic Alarm Master Station
2. Professional Client iVMS-4200 2.7.4.5

## DS-PEA How to configure SIP Server

When you want to connect DS-PEA1-21 with DS-PEA4H-10 by SIP server, you need configure something by iVMS-4200.

### 1. Add to iVMS-4200.



<b>Title:</b>	DS-PEA How to configure SIP Server	<b>Version:</b>	v1.0	<b>Date:</b>	26/02/2019
<b>Product:</b>	DS-PEA Series Emergency Alarm Device			<b>Page:</b>	2 of 5

## 2. SIP Setting configuration

Step 1: Click Remote **Configuration** > **Network** > **Sip Setting** to enter the Sip configuration interface.

Step 2: Check Enable box to enable the Sip server.

Step 3: Enter the Sip server parameters including **IP address, port No., local No., display name, login cycle**

### **Note**

The server port No. ranges from 1024 to 65535.

The local No. ranges from 0 to 999999.

The login cycle ranges from 1 to 30 (min)

Step 4: Click Save to save the settings.

### **Note**

1. For Private SIP, Server Port use 5065 Default.
2. DS-PEA4H-10 Panic Alarm Master Station Server IP address use Device IP.
3. DS-PEA1-21 Panic Alarm Station SIP IP address use Master Station IP.
4. Different Device need use different Local No.
5. If you configure Sip IP address, but can't save, check your 4200 at first.

<b>Title:</b>	DS-PEA How to configure SIP Server	<b>Version:</b>	v1.0	<b>Date:</b>	26/02/2019
<b>Product:</b>	DS-PEA Series Emergency Alarm Device			<b>Page:</b>	3 of 5

### 3. DS-PEA4H-10 Panic Alarm Master Station SIP Setting

Check the Login Status: Registered means login successfully

The screenshot shows the 'Remote Configuration' window with the 'SIP Settings' section selected in the left-hand navigation menu. The main area is titled 'Configuring the SIP Parameters'. A note at the top states: 'Note: The connection to 28181 will be disabled if you start SIP conn...'. The configuration fields are as follows:

- Login Status: **Registered** (highlighted with a red box)
- Server: IP Address (dropdown menu)
- Ip Addr: 10.9.96.160
- Server Port: 5065
- Local No.: 0
- Display Name: 0
- Login Cycle: 10 Minute(s)

A 'Save' button is located at the bottom right of the configuration area.

<b>Title:</b>	DS-PEA How to configure SIP Server	<b>Version:</b>	v1.0	<b>Date:</b>	26/02/2019
<b>Product:</b>	DS-PEA Series Emergency Alarm Device			<b>Page:</b>	4 of 5

## 4. DS-PEA1-21 Panic Alarm Station SIP Setting

Check the Login Status: Registered means login successfully

The screenshot shows the 'Remote Configuration' window with the 'SIP Settings' section selected in the left-hand navigation menu. The main area is titled 'Configuring the SIP Parameters'. A checkbox labeled 'Enabled' is checked, with a note: 'Note: The connection to 28181 will be disabled if you start...'. Below this, the 'Login Status' is displayed as 'Registered' in a red-bordered box. Other fields include 'Ip Addr: 10.9.96.160', 'Server Port: 5065', 'Local No.: 1', 'Display Name: 1', and 'Login Cycle: 10 Minute(s)'. A 'Save' button is located at the bottom right of the configuration area.



<b>Title:</b>	DS-PEA How to configure SIP Server	<b>Version:</b>	v1.0	<b>Date:</b>	26/02/2019
<b>Product:</b>	DS-PEA Series Emergency Alarm Device			<b>Page:</b>	5 of 5

**First Choice for Security Professionals**  
**HIKVISION Technical Support**