

DS-PHA Hybrid Panel

Version: V1.3.0

Release Note (2021-01-23)

1. Firmware Basic Information

Firmware Basic Information	Firmware Version	V1.3.0 build 210115
	Web Version	V4.25.1 build 210115

2. V1.3.0 Upgrade Note

2.1 Added Function:

1) Web adds Device Status Interface:

Including zone Bypass/Bypass restored, Area Arm/Disarm, Relay Operation, Sounder Operation

Zone	Name	Status	Alarm Status	Detector battery capacity	Signal Strength	Operation
1	Zone 1	Disarm	Normal	Invalid	Invalid	[Bypass] [Bypass Restored]
2	Zone 2	Disarm	Normal	Invalid	Invalid	[Bypass] [Bypass Restored]
3	Zone 3	Disarm	Normal	Invalid	Invalid	[Bypass] [Bypass Restored]
4	Zone 4	Disarm	Normal	Invalid	Invalid	[Bypass] [Bypass Restored]
5	Zone 5	Not Linked	Normal	Invalid	Invalid	[Bypass] [Bypass Restored]
6	Zone 6	Not Linked	Normal	Invalid	Invalid	[Bypass] [Bypass Restored]
7	Zone 7	Not Linked	Normal	Invalid	Invalid	[Bypass] [Bypass Restored]
8	Zone 8	Not Linked	Normal	Invalid	Invalid	[Bypass] [Bypass Restored]
9	Zone 9	Not Linked	Normal	Invalid	Invalid	[Bypass] [Bypass Restored]
10	Zone 10	Not Linked	Normal	Invalid	Invalid	[Bypass] [Bypass Restored]
11	Zone 11	Not Linked	Normal	Invalid	Invalid	[Bypass] [Bypass Restored]
12	Zone 12	Not Linked	Normal	Invalid	Invalid	[Bypass] [Bypass Restored]
13	Zone 13	Not Linked	Normal	Invalid	Invalid	[Bypass] [Bypass Restored]

Area	Name	Status	Operation
1	Area1	Disarm	[Home] [Disarm] [Lock]
2	Area2	Disable	[Home] [Disarm] [Lock]
3	Area3	Disable	[Home] [Disarm] [Lock]
4	Area4	Disable	[Home] [Disarm] [Lock]

2) Support more multiple languages: Czech, Greek, Croatian, Romanian, Slovenian, Slovak, Turkish

3) Support Audible Tamper Alarm configuration:

If enabled, Panel or Peripherals tamper will linkage Panel and wireless sounder alarm

If disabled, Panel or Peripherals tamper only have event, will not linkage Alarm

System Options Management

- Forced Arming: off
- System Faults: on
- One-Push Lock: off
- Audible Tamper Alarm: on**

Save

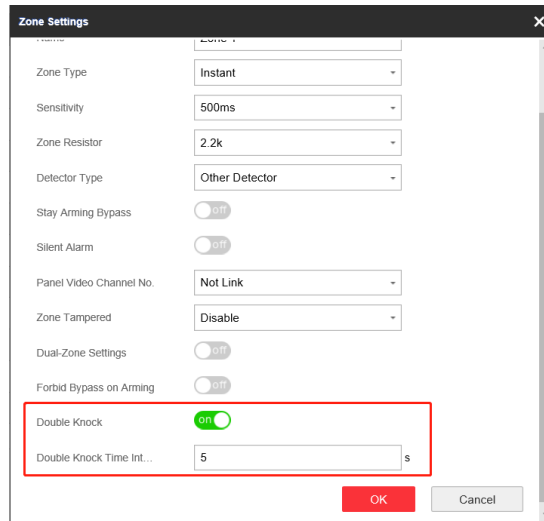
4) Add Zone Settings

Forbid Bypass on Arming: After enabled, you can't bypass zones when arming

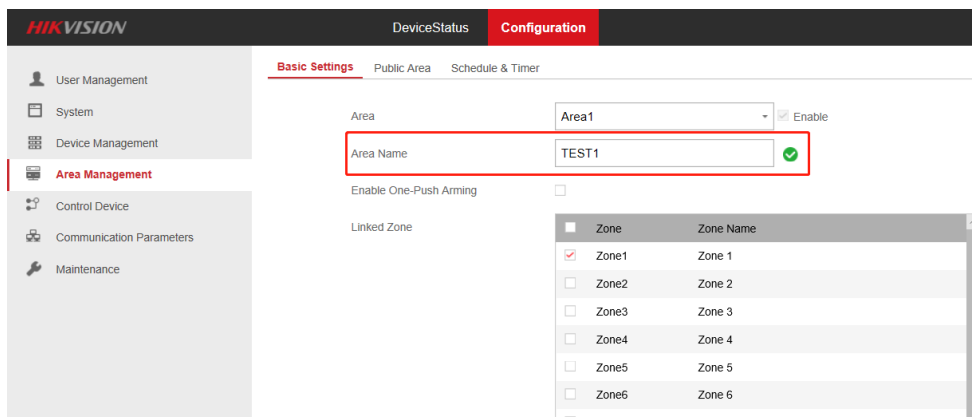
Zone Settings

- Zone: 1
- Name: Zone 1
- Zone Type: Instant
- Sensitivity: 500ms
- Zone Resistor: 2.2k
- Detector Type: Other Detector
- Stay Arming Bypass: off
- Silent Alarm: off
- Panel Video Channel No.: Not Link
- Zone Tampered: Disable
- Dual-Zone Settings: off
- Forbid Bypass on Arming: off**
- Double Knock: off

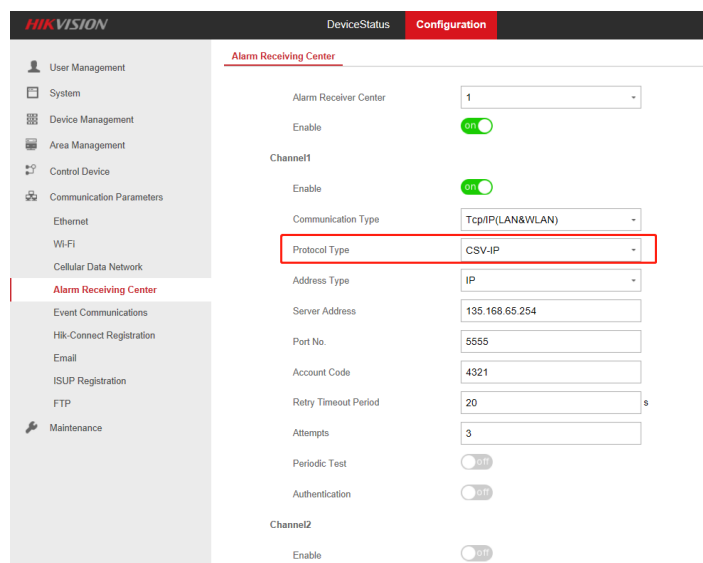
Double knock: After enabled, the time interval can be set. If the same detector is triggered twice or continuously in a period of time, the alarm will be triggered.



5) Support Configure Area Name



6) Support Alarm Receiving Center CSV-IP Protocol



7) Support Periodic test function

SIA Code: RP, CID code: 1602, report can send by IP or PSTN

Protocol Type	ADM-CID
Address Type	IP
Server Address	0.0.0.0
Port No.	0
Account Code	
Transmission Mode	TCP
Retry Timeout Period	20 s
Attempts	3
Heartbeat Interval	
Periodic Test	<input checked="" type="checkbox"/>
Monitoring station ping I...	300 s

Channel2
Enable

8) Support NVR Video Channel No.

The screenshot shows the 'Network Camera Management' section of the HIKVISION interface. A table lists video verification channels with columns for channel number, IP address, verification count, port, and connection status. A dialog box titled 'Panel Video Channel No.' is open, allowing selection of a channel number from D01 to D24. D02 is currently selected.

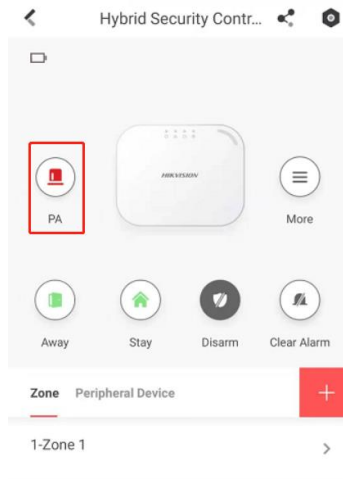
Video Verification Channel	Network Camera IP Address	Video Verification Ca...	Network Camera Port	Network Camera Connection Status
1	10.9.96.93	1	8000	Connected(Connected)

9) Support Security Audit Log

Zone Alarm event can upload to designed Server.

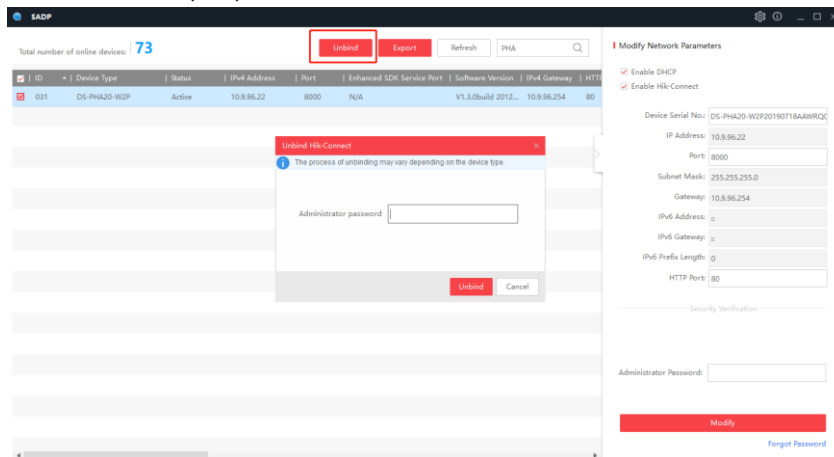
The screenshot shows the 'Security Audit Log' configuration page. It includes an 'Advanced Configuration' section with a checkbox for 'Enable Log Upload Server'. Below this are 'Server Settings' with input fields for 'Log Server IP' (0.0.0.0) and 'Log Server Port' (5046). There is also a 'CA Certificate' section with an 'Install' button and a 'View' button. A 'Save' button is located at the bottom.

10) Support Hik-connect Software Panic Button



11) Support SADP Unbind Hik-connect Function

Panel and SADP (PC) connect to same network, then click Unbind.



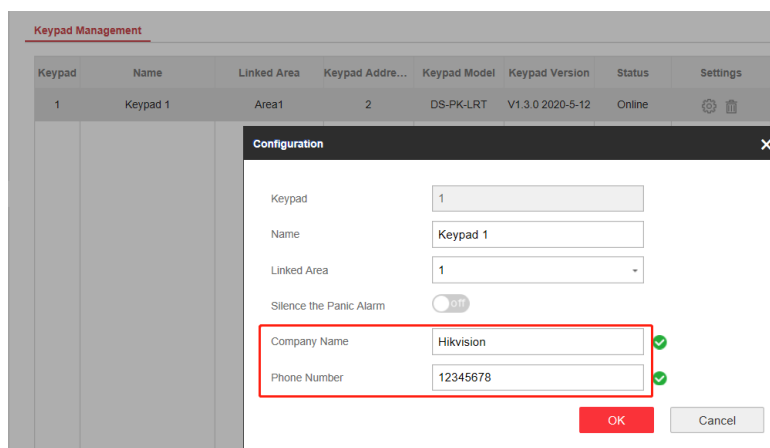
12) Support HPC Linkage Function

13) LCD&LED Keypad Function Changed

LCD Keypad DS-PK-L series (Need Firmware V1.4.0_build201225 or later)

LED Keypad DS-PKG-H4(8)L (Need Firmware V2.4.0_build201225 or later)

1) Support configure LCD Keypad Company Name and Phone Number





2) LCD Keypad Support Medical Alarm

Press on button 3 for 3s to trigger medical alarm.

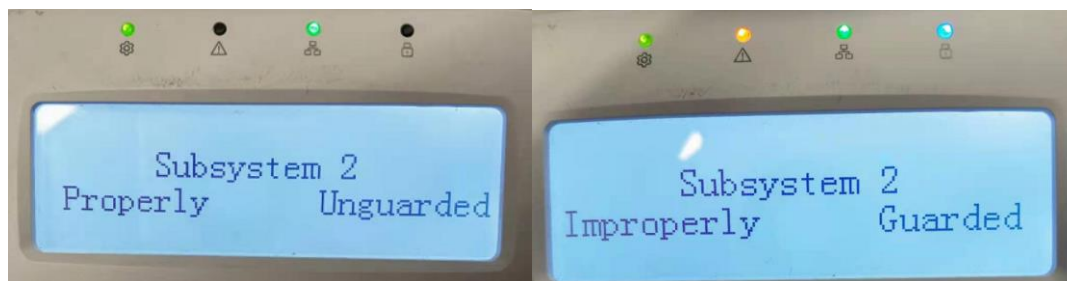
3) LCD Keypad Support Status Shows

Improperly: Panel have system Fault

Properly: Panel not have system Fault

Unguarded: Area 2 in Arm status

Guarded: Area 2 in Disarm status



4) LED keypad add Fire alarm and Panic alarm

Press on button 1 for 3s to trigger Fire alarm.

Press on button 3 for 3s to trigger Panic alarm.

5) LED Keypad support EN Arm Process

6) Add Global Keypad Operation

Support global keypad Arm/Disarm Sub-Area

7) Support use keypad command to operate relay.

Open Relay: [Password][*][8][5][n][n][n][#]

Close Relay: [Password][*][8][6][n][n][n][#]

2. Feature optimization:

1) Wireless Sounder Function Optimization

- 1) Support Wireless sounder Voice Test function, Test the volume level
- 2) Wireless Sounder LED/.Buzzer linkage to Arm/Disarm and supports separate linkages

Sounder Settings

Sounder: 2

Name: Sounder 2

Volume: 2

Module Name: Module1

Area: Active Functions
 Area1
 Area2
 Area3
 Area4

Enroll Wireless Sounder: on

Serial No.: Q03304558

Wireless Supervision Ti...: 1

Arm/Disarm LED Indicator: on

Arm/Disarm Buzzer: on

2) Key Zone Function Optimization

Support trigger by zone Status(Trigger Arming or Trigger Disarm)

Zone Settings

Zone: 2

Name: Zone 2

Zone Type: Key

Sensitivity: 500ms

Zone Resistor: 2.2k

Detector Type: Other Detector

Silent Alarm: off

Panel Video Channel No.: Not Link

Zone Tampered: Disable

Dual-Zone Settings: off

Trigger Type: by Zone Status | Trigger Arming

by Trigger Times

by Zone Status

Cancel

3) Delay Zone Function Optimization

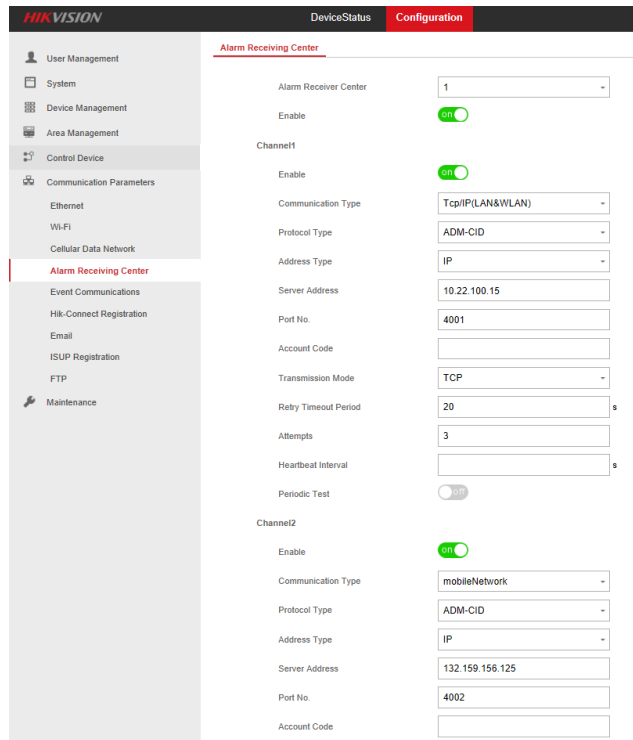
Optimize the recording Start time for Delay zone video Verification, Start by entering the Delay zone (Entry delay time start), not after Alarm triggered.

4) Phone Call Function Optimization

After the Phone Call, add the voice prompt "Please press the *(Key) to confirm"

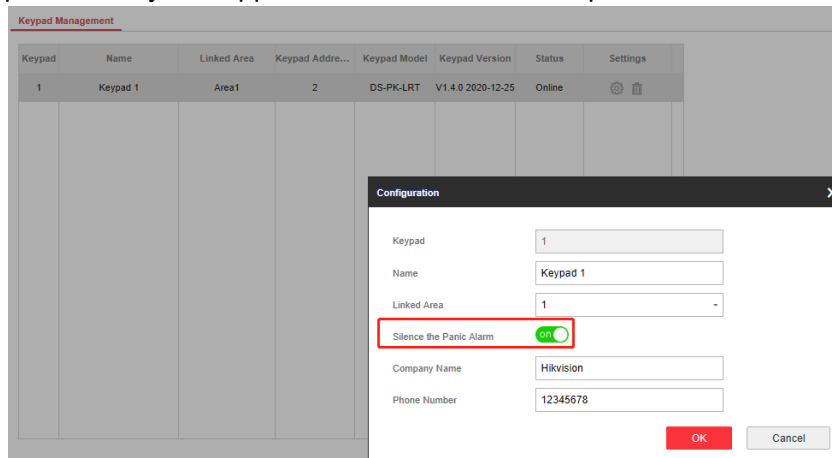
5) Alarm Receiving Center Optimization

Support Alarm receiving Center channel configure to upload to different IP ARC.



6) Panic Alarm Optimization

Keypad and Keyfob support Silence Panic Alarm Option, default disabled.



7) APP/Web Translation Optimization

Name optimization.

Card → **Tag** ;

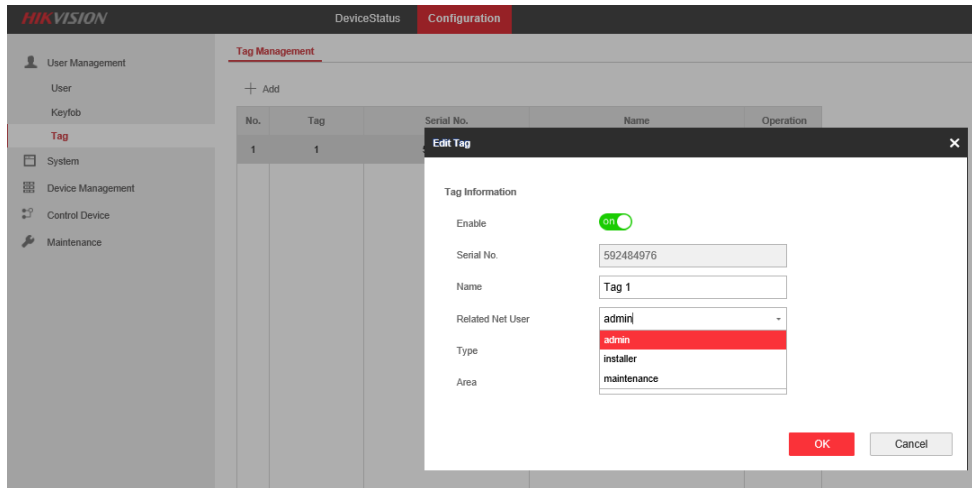
manufacturer → maintenance ;

Siren → Sounder

Partition → Area

8) Keyfob and Tag Linkage User Function Optimization

Need login with admin account, then can select keyfob/Tag related Net user.



9) Wireless Receiver Support number Optimization

Increase wireless detectors support capability (Max number of wireless detectors from 8 to 16) . (DS-PM-RSWR Firmware need V2.2.0 build201124 or later)

10) Relay Linkage configuration Optimization

Optimized relay Event linkage (NO or NC) and contact status shows.

