

# DS-PHA Hybrid Panel

## Version: V1.1.0

### Release Note (2020-03-03)

## 1. Firmware Basic Information

<b>Firmware Basic Information</b>	Firmware Version	V1.1.0_build200224
	Web Version	V4.25.1 build 200222

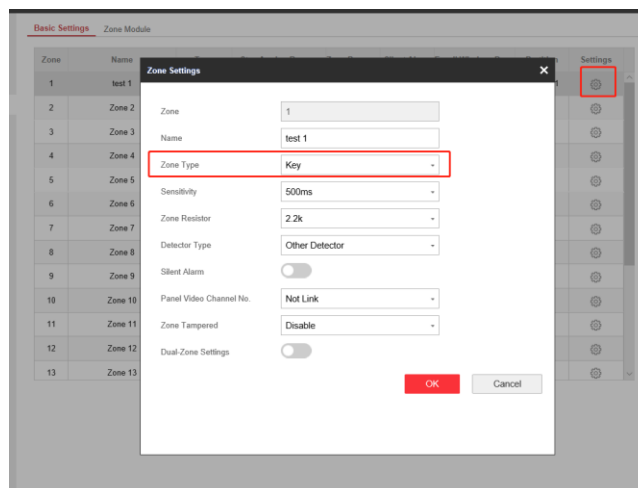
## 2. V1.1.0 Upgrade Note

### 2.1 Added Function:

#### 1) Add Key Zone function:

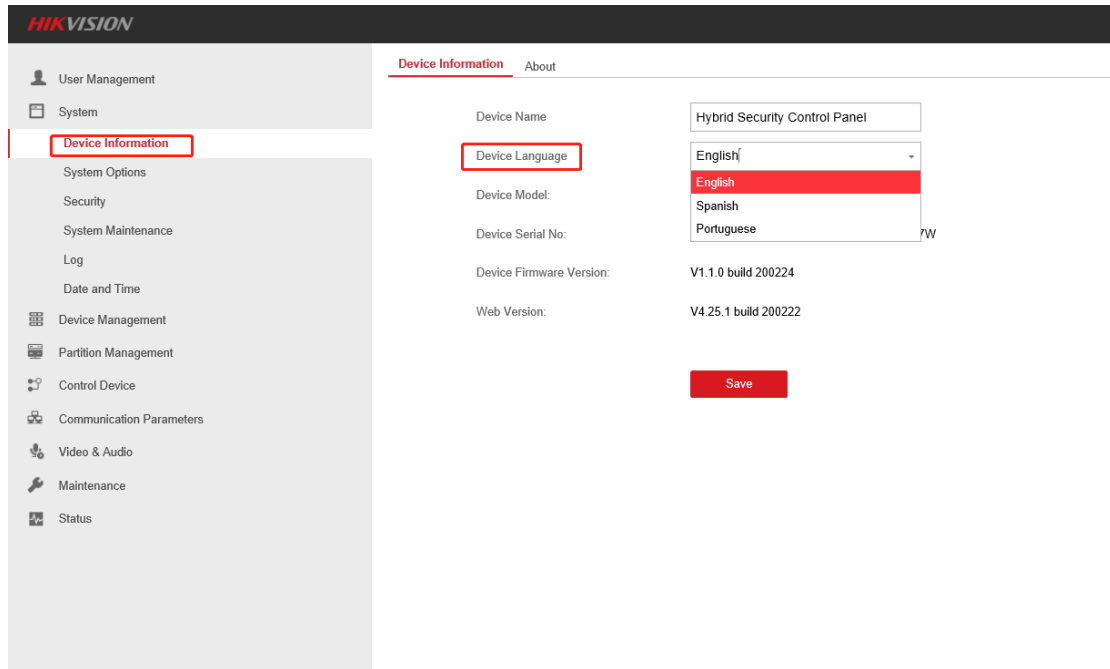
**Key zone:** The linked partition will arm after zone being triggered, will disarm after zone being restored. In the case of the tampering alarm, the arming and disarming operation will not be triggered.

**Note:** This version key zone support Long signal input.



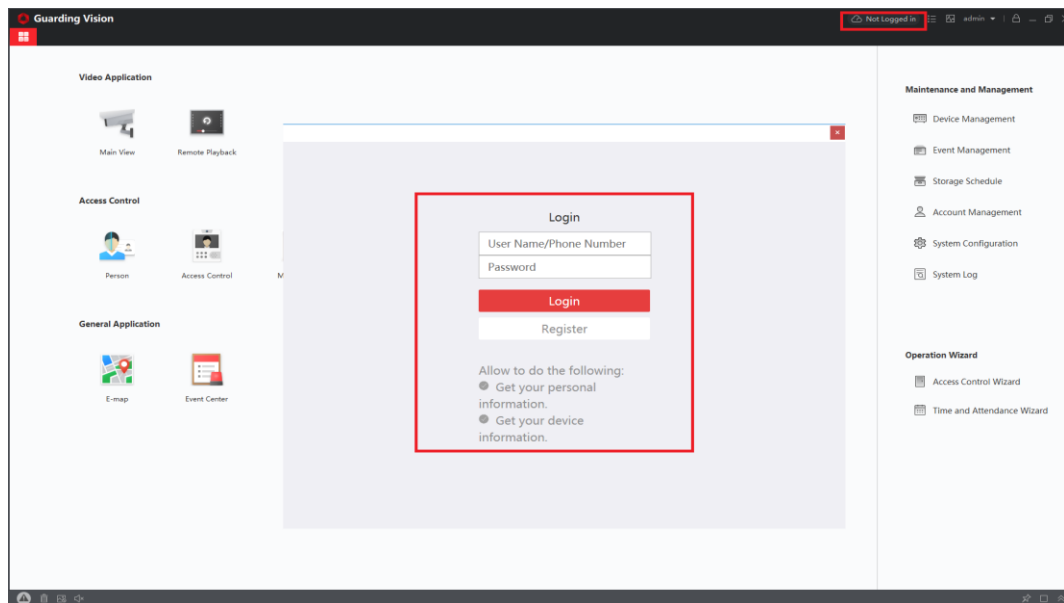
## 2) Add multi-language switching function

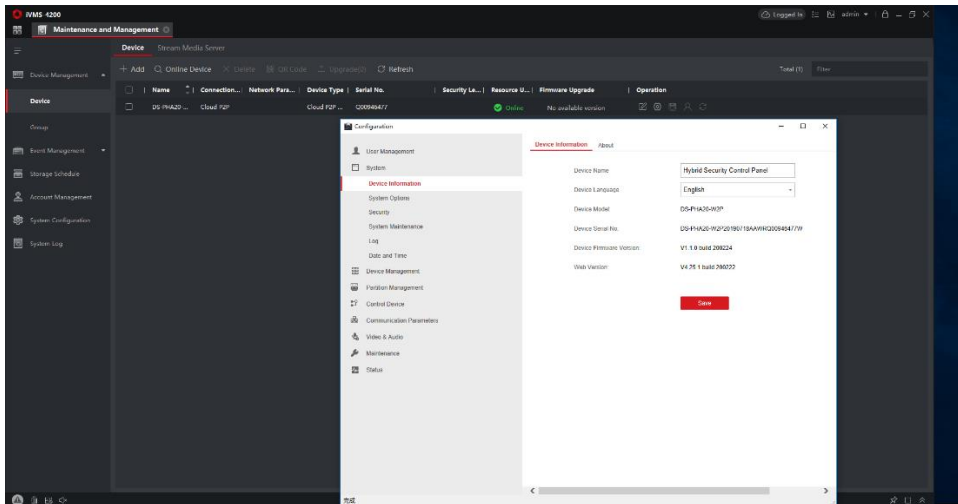
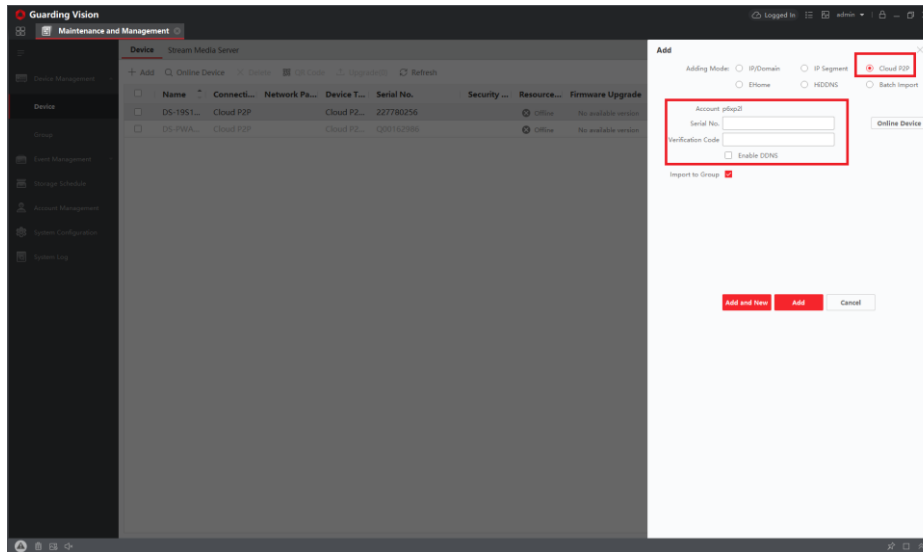
Now support multi-language **English, Spanish, and Portuguese**. Customer can change language in website directly, after changed the panel will restart.



## 3) Added 4200 remote configuration function.

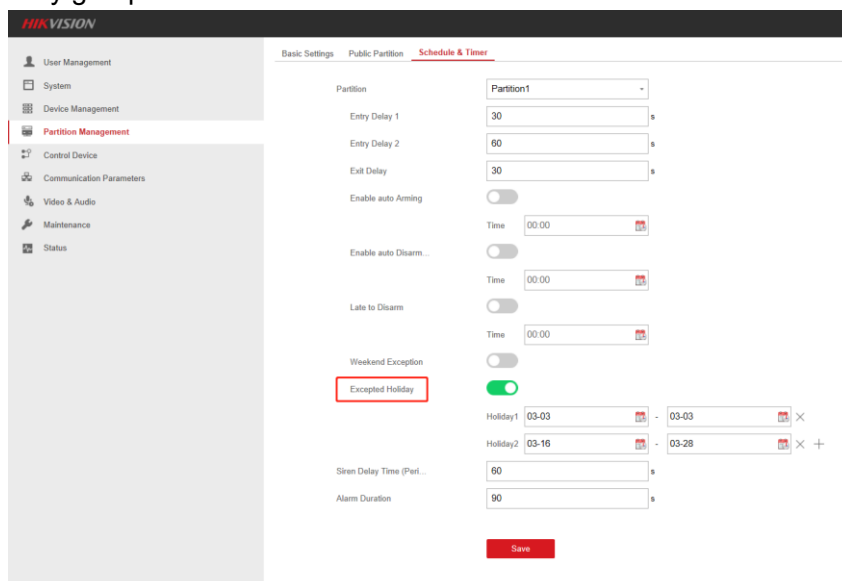
The installer can login Hik-connect account through the 4200 client, and then add the device to the account. Then they can click the Remote Configuration button to configure it.





#### 4) Add Excepted Holiday function:

Enable the function and the system will not be Auto armed/disarmed in the holiday.  
Up to 6 holiday groups can be set.

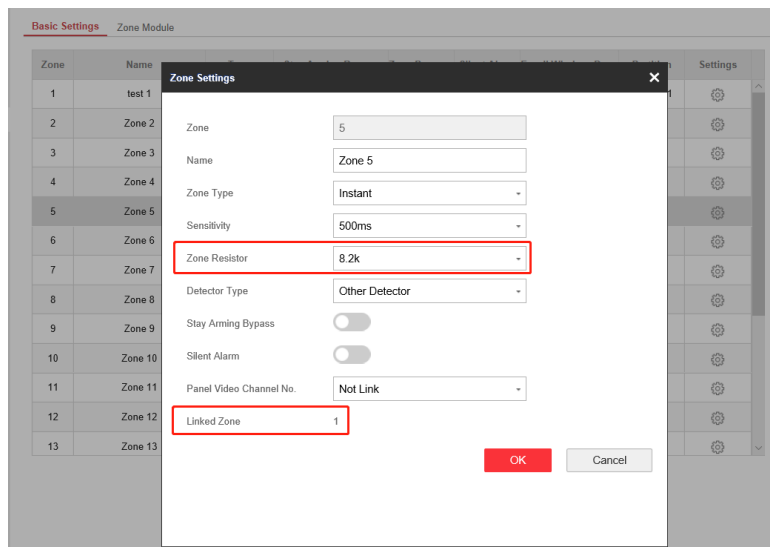
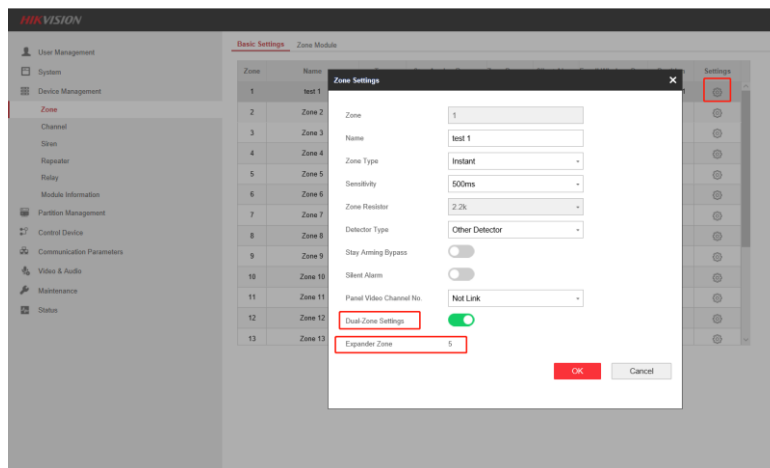


### 5) Add Dual-Zone function

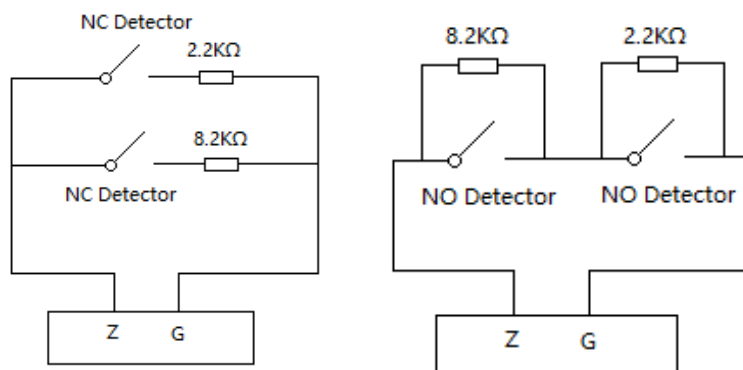
One Panel onboard zone input can connect two wired detectors and realize related alarm functions; For example, 4 inputs Panel can connect 8 wired detectors onboard.

Need enable the Dual-zone Settings to open this function, after enabled, it will show expander zone number.

**Note:** This function need special hardware, if customer need this function, tell to our Hikvision sales at first.

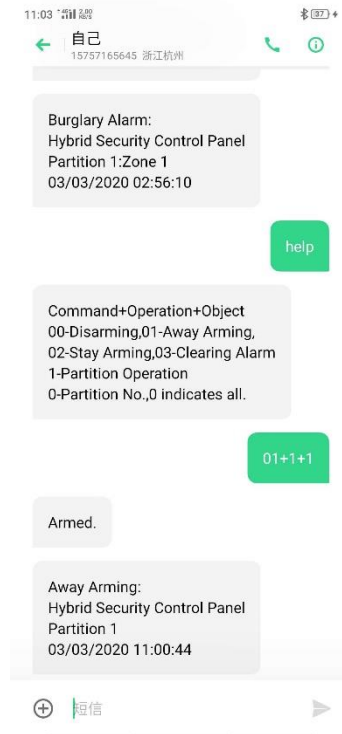


NC and NO detector use different connection way, see the picture as follow.



## 6) Add SMS HELP function

If customer do not know how to send Arm/Disarm command with SMS, they can send **help** to Panel SIM card number, and then they will get the SMS for how to Arm/Disarm Command.

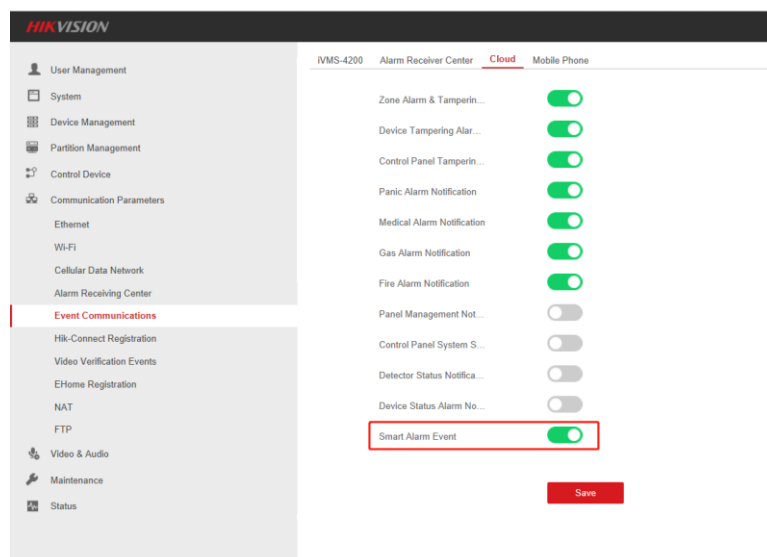


## 7) Support add Thermal camera to get smart Alarm notification

After add the Thermal camera to Panel, Panel can get the notification form camera and send it to the 4200/Alarm receiver Center/Hik-Conenct/SMS.

Support alarm types: entering area alarm, leaving area alarm, cross-line alarm, intrusion alarm, low temperature warning, low temperature alarm, high temperature warning, high temperature alarm, fire point detection.

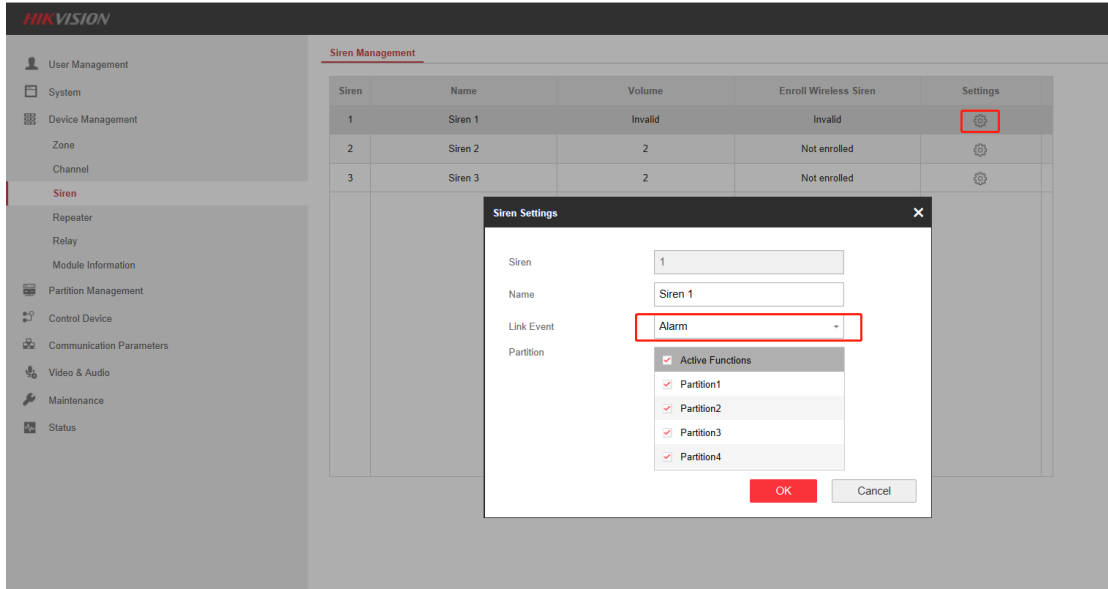
Support models: DS-2TD1117, DS-2TD1217, DS-2TD2617, DS-2TD2117



## 2. Feature optimization:

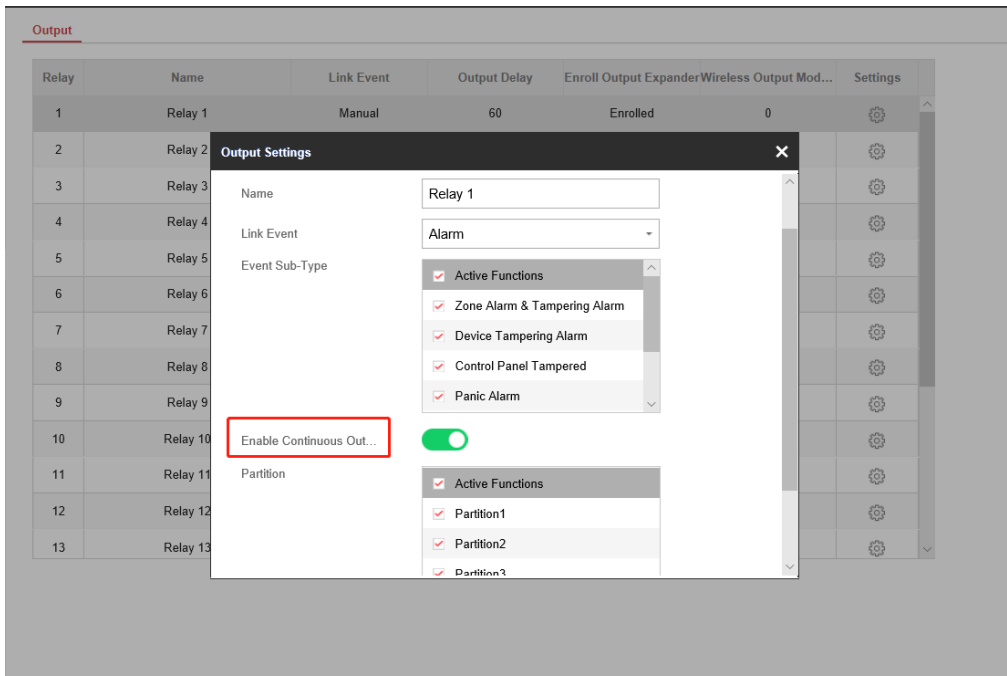
### 1) Siren Linkage Optimization:

Siren can linkage to one partition or all partition. When the zone alarm, only partition associated siren will alarm.



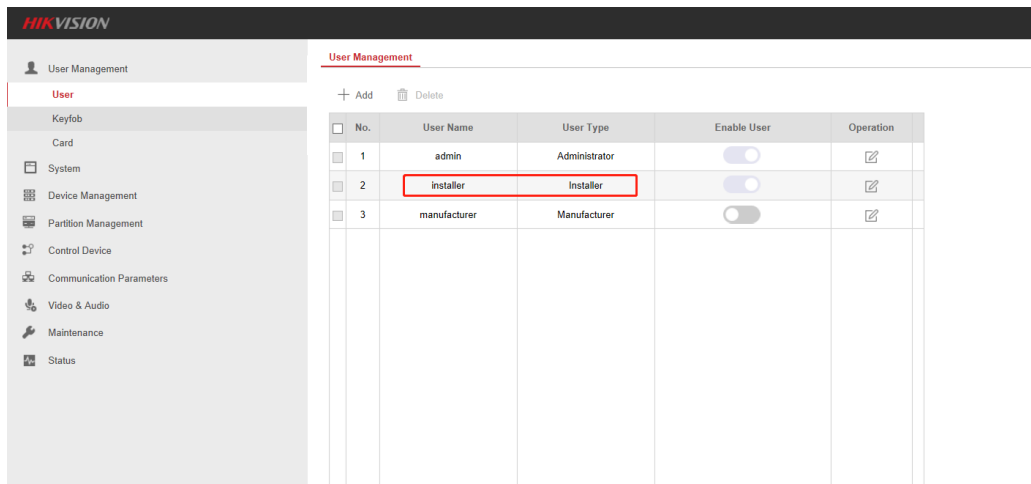
### 2) Relay function Optimization:

Support relay continuous output, support linkage to alarm, arm, disarm, Partition, Zone event.

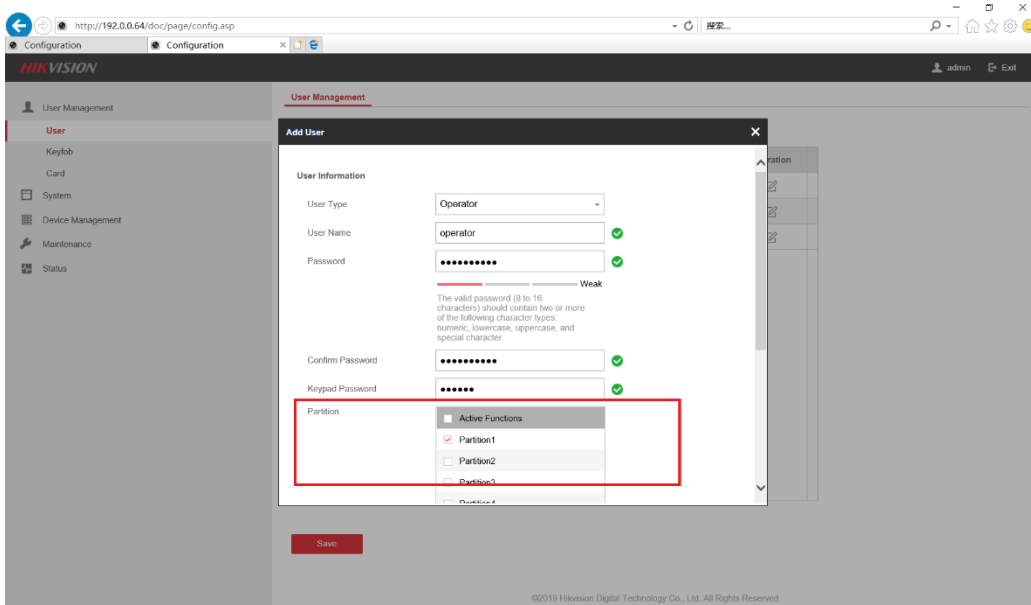


### 3) User Name Optimization:

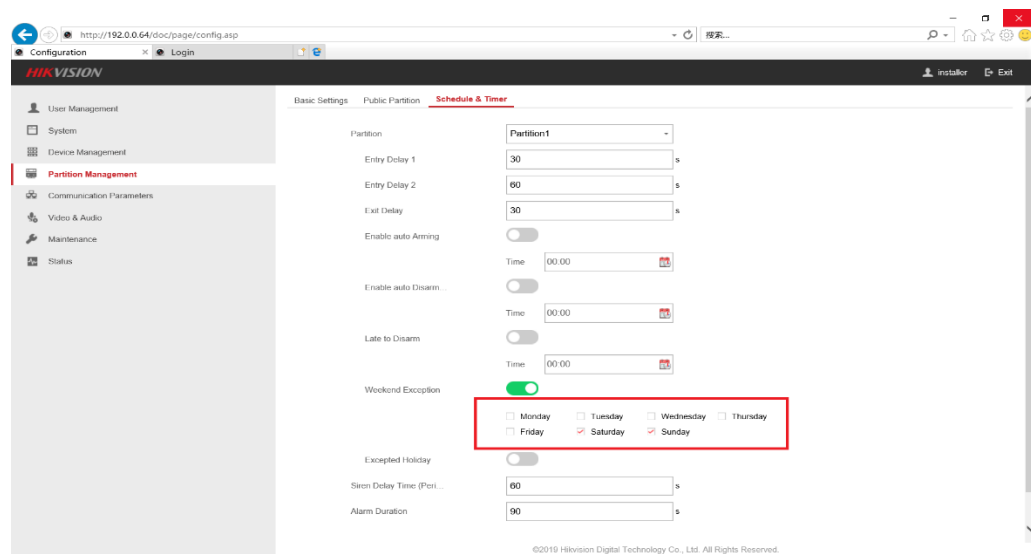
The account: **setter** users changed to **installer** users. Default password will change to **installer12345**



**4) User Function Optimization:**  
Support the Different User linkage to different Partition.



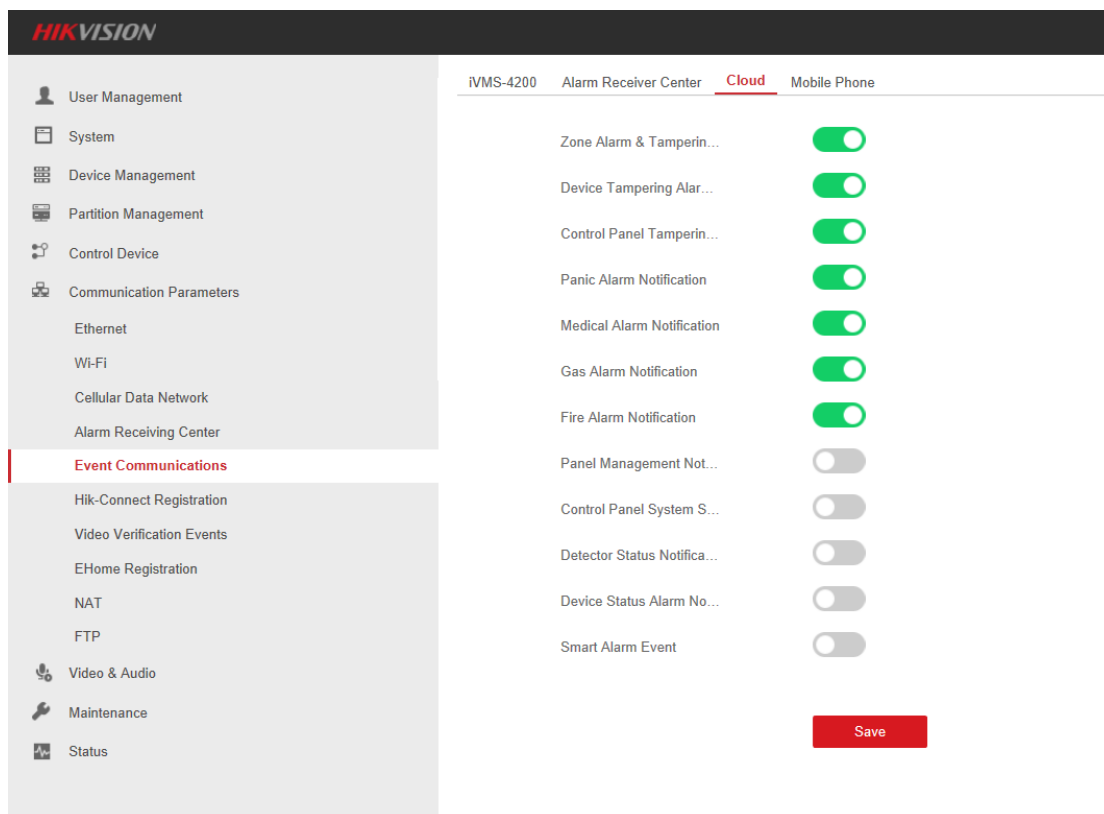
**5) Weekend Exception Function Optimization:**  
Support Monday to Sunday date configuration.



### 6) Event Classification Optimization:

The current event classification is as follows:

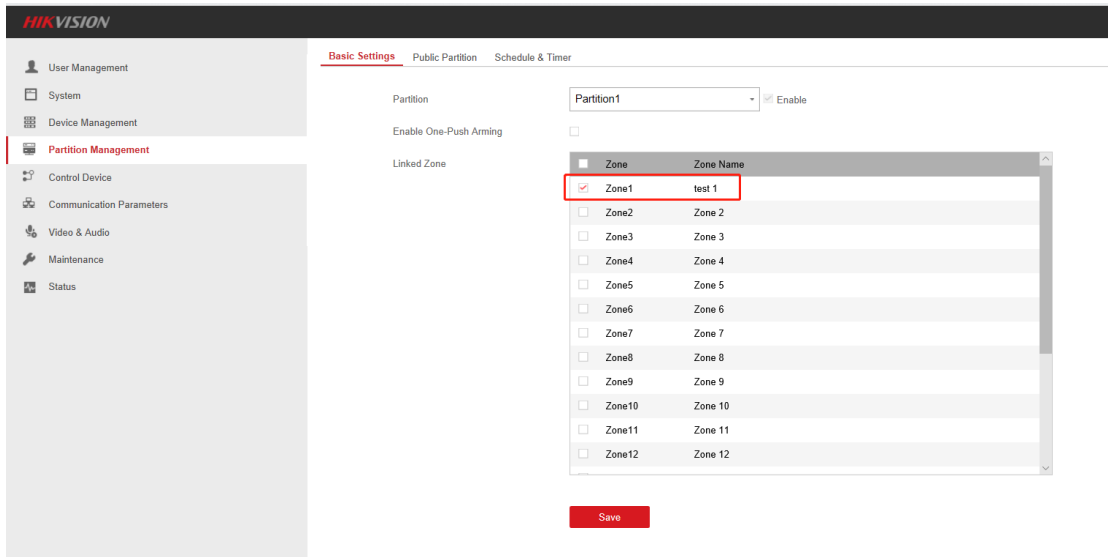
1. Zone Alarm & Tampering Alarm Notification
2. Device Tampering alarm Notification
3. Control Panel Tampering Alarm Notification
4. Panic Alarm Notification
5. Medical Alarm Notification
6. Gas Alarm Notification
7. Fire Alarm Notification
8. Panel Management Notification
9. Control Panel System Status Notification
10. Detector Status Notification
11. Device Status Notification
12. Smart Alarm Event



### 7) Partition Management interface Optimization:

It can show zone name in partition Basic setting interface.





### 8) Advanced Setting function and interface Optimization:

Change the advances setting function to **Default Disable**, if customer need this function, they can enable manually.

