

Temperature Screening Thermographic Camera

Version:V5.5.26 build200917

Release Notes

(2020-9-25)

Firmware Version	V5.5.26 build 200917
------------------	----------------------

Product Support List
DS-2TD1217B-3/PA
DS-2TD1217B-6/PA
DS-2TD2617B-3/PA
DS-2TD2617B-6/PA
DS-2TD2636B-10/P
DS-2TD2636B-13/P
DS-2TD2636B-15/P
DS-2TD2637B-10/P

Reason of Upgrade

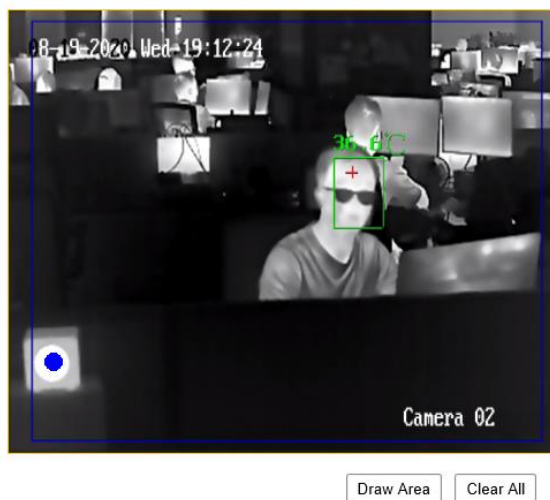
Added new features, fixed some known issues.

New Features

1. Added **Set Black Body Position** function in **Black Body Parameters**. Supported choosing the black body position in thermal channel as **Point** or **Frame**. Supported **Black Body Remove Alarm** by OSD.

Black Body Parameters	
<input checked="" type="checkbox"/> Enable Black Body Correction	
Distance	<input type="text" value="3"/> m
Temperature	<input type="text" value="40"/> °C
Emissivity	<input type="text" value="0.97"/>
Set Black Body Position	<input type="text" value="Point"/> <input type="text" value="Frame"/>

Under the **Point** mode, the configuration way is the same as former versions. Click **Draw Area** to put the blue correction point on the middle of black body surface and set the **Black Body Parameters** with actual values.



Black Body Parameters	
<input checked="" type="checkbox"/> Enable Black Body Correction	
Distance	<input type="text" value="3"/> m
Temperature	<input type="text" value="40"/> °C
Emissivity	<input type="text" value="0.97"/>
Set Black Body Position	<input type="text" value="Point"/>

Temperature Compensation	
<input checked="" type="checkbox"/> Enable	
Compensation Type	<input type="text" value="Auto"/>
Compensation Value	<input type="text" value="1.7"/> °C
Manual Calibration	<input type="text" value="0"/> °C
Environmental Temperat...	<input type="text" value="Auto"/>
Environmental Temperature	<input type="text" value="26.44"/> °C

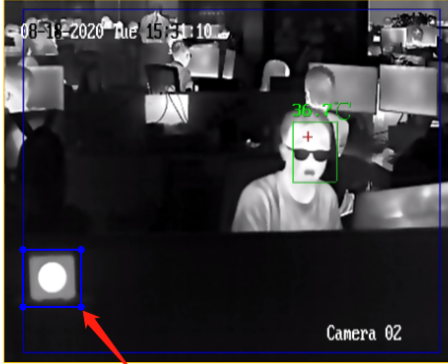
Under the **Frame** mode, you should draw a frame around the black body heating surface. The device would find the blackbody position according to the shape and temperature uniformity of black body heating surface.

Basic Settings **Temperature Screening Configuration** Linkage Method

Channel No.

Overlay Information

Display Temperature
 Face Frame Face Temperature Display Face Temperature Position



08-18-2020 Tue 15:53:10

Camera 02

Black Body Parameters

Enable Black Body Correction

Distance m ✓
Temperature °C ✓
Emissivity ✓
Set Black Body Position ①

Temperature Compensation

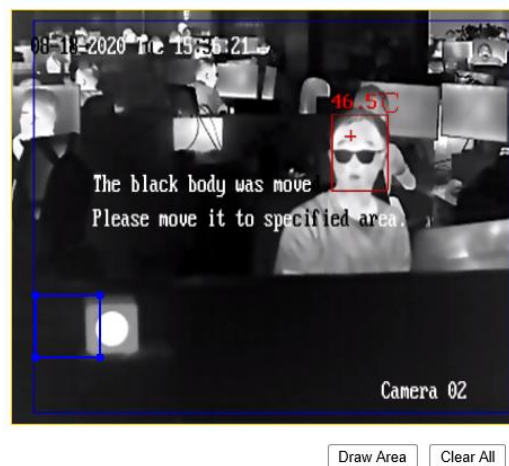
Enable

Compensation Type
Compensation Value °C
Manual Calibration °C ✓
Environmental Temperat...
Environmental Temperature °C

②

③

When the black body is moved outside the frame under **Frame** mode, it would trigger an OSD alarm on the middle of image: "The black body was moved. Please move it to Specified area" (English only).



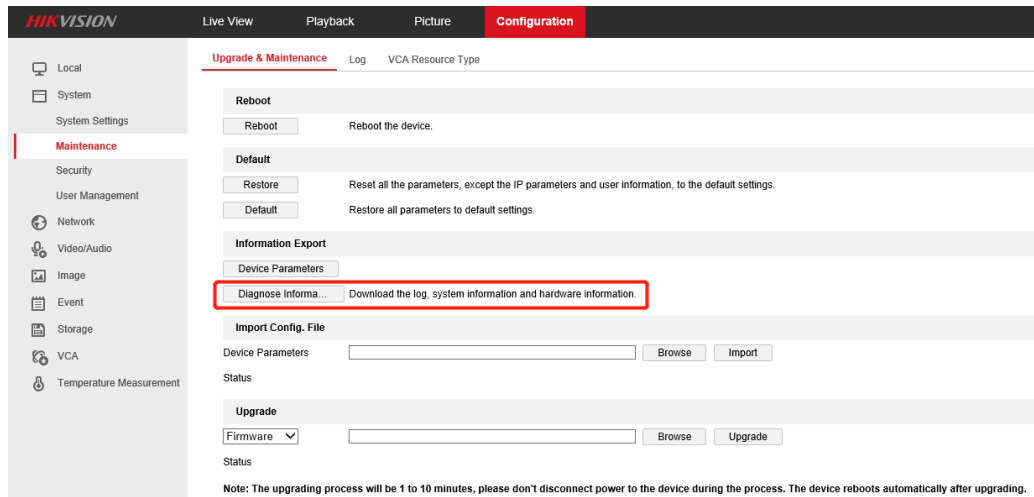
In addition, the black body should be included in the blue frame completely. If not, this OSD alarm would also be triggered.



Note: This alarm only showed by thermal channel OSD information, could not be transferred to back-end devices or platforms as a type of event.

Optimization

1. Added extra log and info in **Diagnose Information**, which helps analyze and locate trouble spot by exporting diagnose information more quickly.



2. Fixed issues of noise in the thermal imaging channel during cold booting of 160*120-resolution cameras (DS-2TD1217B-3(6)/PA, DS-2TD2617B-3(6)/P).

3. Solved the control failure problem of connecting external devices through RS485

bus within a period of time after the device is powered on.

4. Solved the failure of intelligent features as face detection or temperature display, which is mainly caused by internally timestamp overflow when the device keeps running for over 49 days in some cases.



First Choice for Security Professionals

Remarks:

- Hikvision reserves the right to change, alter or withdraw the above notification without prior notice.
- Product design and specifications are subject to change without prior notice.
- The Hikvision firmware may contain errors known as errata which may cause the product to deviate from published specifications. Current characterized errata are available on request.
- Hikvision is not liable for any typing or printing errors.

Hikvision Digital Technology CO., Ltd.
No. 555 Qianmo Road, Binjiang District, Hangzhou 310051,
China
Tel: +86-571-8807-5998
FAX: +86-571-8993-5635
Email: overseabusiness@hikvision.com