



HIKVISION EUROPE B.V.

How to upgrade the firmware for the handheld monocular

Product: DS-2TS03

Publisher: Dylan.Luo



Hikvision Europe B.V.

www.hikvision.com/europe

product.eu@hikvision.com

Purpose

Upgrade the new firmware for the thermal handheld monocular.

Preparation


1. Download and install the "SADP".
2. Download and install the "Device Network SDK".
3. Download the firmware zip and decompress it to your computer desktop.

There are 2 ways of upgrading the handheld monocular.


① With the USB cable

1. Connect the monocular to the PC and open the detected disk (please note that only when the hotspot or WI-FI is disabled can the disk be detected.)
2. Put the decompressed digicap.dav into the root directory of the device.



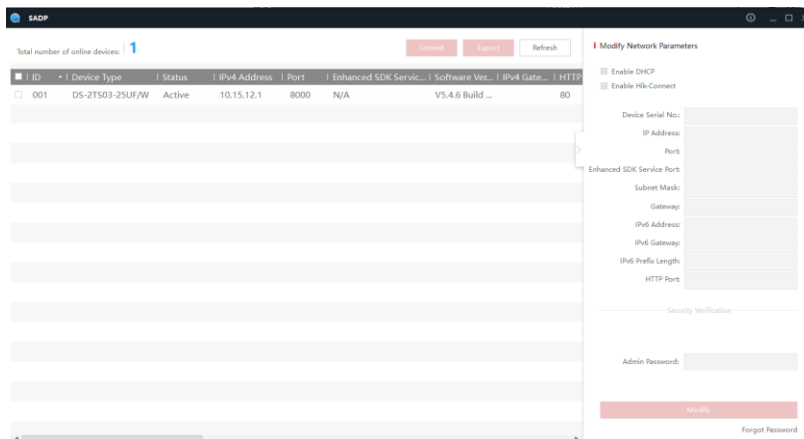
3. Reboot the device and the firmware will upgrade automatically. The upgrading process will display in the main interface. Check the  button to see the current firmware version after the upgrade (the decompressed firmware will be deleted automatically after the installation).


② Without the USB cable

1. Enable the hotspot function (this icon  represents the hotspot function)
2. Search the hotspot with your computer, the hotspot name is "HIK-IPTS Serial No." the hotspot password is the later 9 digit of the serial number (e.g. "C87856786").

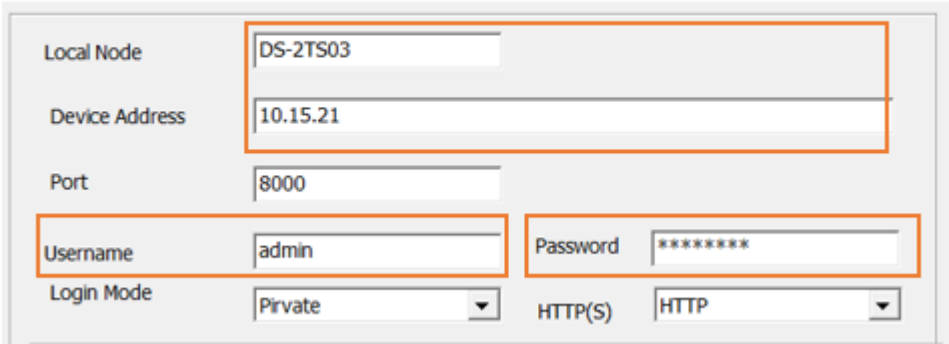
 **WLAN (HIK-IPTSC87856786)**

3. Search the device via the SADP to activate the device and get the IP address. Please note there is no web page for the handheld monocular.



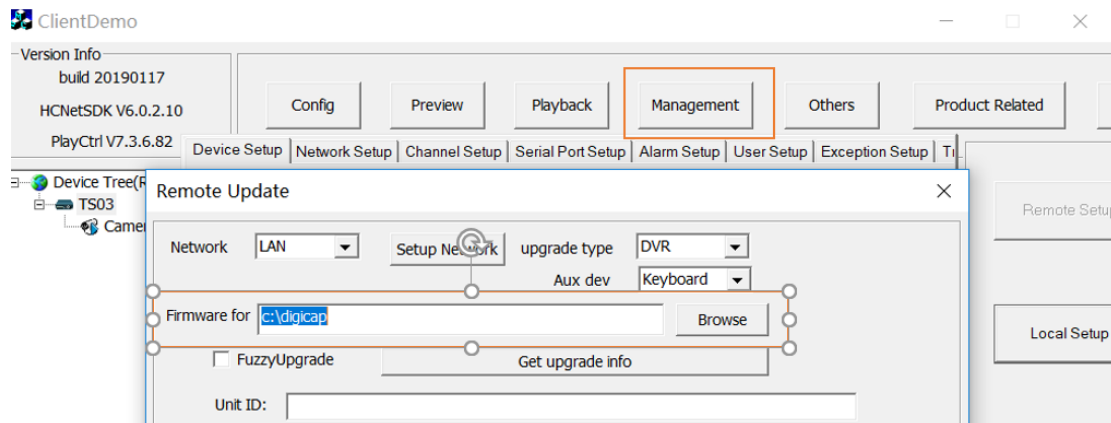
4. Run the client demo in "EN-HCNetSDK(Windows64)V6.0.2.10_build20190117\lib". Right click on the device tree |  Device Tree(Right Click to A to add the device into the client demo.

Add Device



Local Node	DS-2TS03
Device Address	10.15.21
Port	8000
Username	admin
Password	*****
Login Mode	Private
HTTP(S)	HTTP

5. Click "management => upgrade" and browse the decompressed firmware to launch the upgrade. The upgrading process will display in the client demo.



6. Reboot the device after the upgrade.