

Thermal Presence Detector

Version: V5.5.46 build 211126

Release Notes

(2021-12-13)

General Information

Main Firmware Version	V5.5.46 build 211126
SDK Version	V6.1.7.20 build20210511
Play Lib	V7.3.9.55 Win32_Base_Build20210507
iVMS-4200	V1.6.6.2 build20211119
Web Component/Plugin Version	V4.0.1.2 build 211118/ 3.0.7.42
Temperature algorithm version	V2.1.1build20211012

Supported Product List

HM-TD1017-1/QW-HS111
HM-TD1017-2/QW-HS121

Reason of Upgrade

Added new features and implemented some optimizations.

Key Updates:

1. Added thermal presence detector.



Figure 1

2. Support number of people exception detection and People Existence Detection.

- Draw the detection area and set detection rule for people number management.
- Enable People Number OSD to display the real-time people number of the region on live image.
- Enable Alarm Times Per Exception and enter a desired Times. If not, the devices uploads the alarm information continuously until the exception disappears.
- Set the minimum Alarm Interval for the device to upload alarms for a different exception incident in each rules. If the interval between two exceptions is less the set value, the second exception will not trigger alarm uploading.
- Meanwhile set First Alarm Delay to filter out the interference.

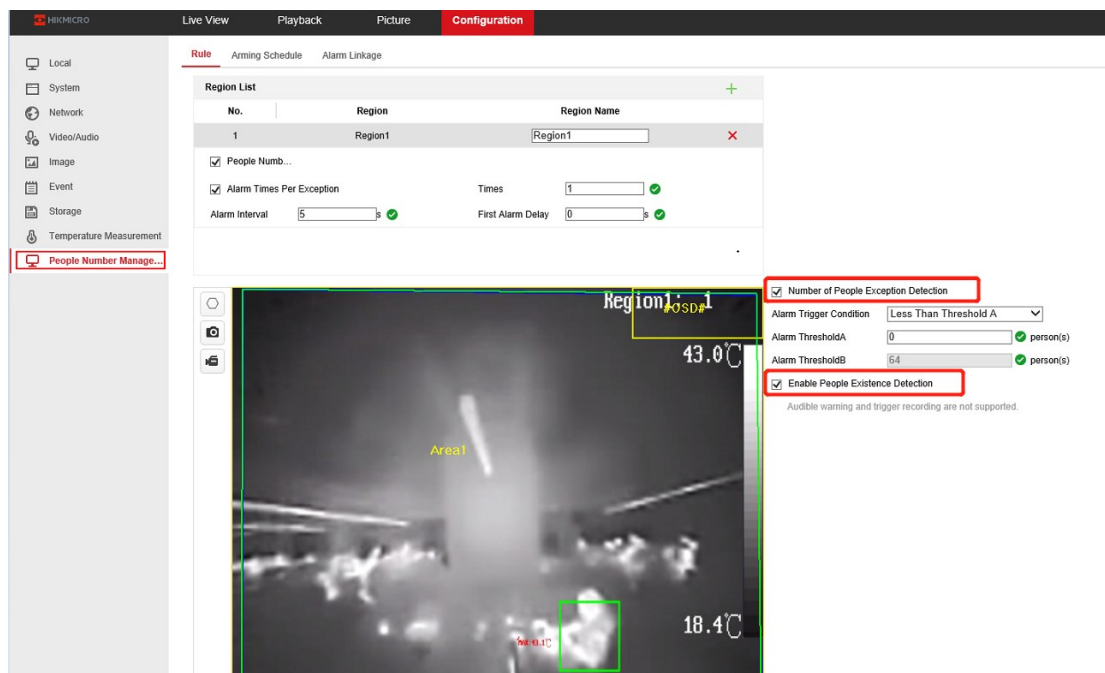


Figure 2

- Enable Number of People Exception Detection, exception alarm will be triggered when number of people meets the Alarm Trigger Condition.
 - Check Enable People Existence Detection, existence alarm will be triggered when there are people in the region.
3. Support Temperature Measurement.
- Temperature range is -20°C to 200°C (14°F to 392°F), temperature accuracy is ± 8°C (± 14.4°F).
 - Only support normal mode to measure the temperature of the whole scene.
 - Support shielded region to configure areas which no need to be detected.
 - Web browser can be imported temperature calibration file to device directly.

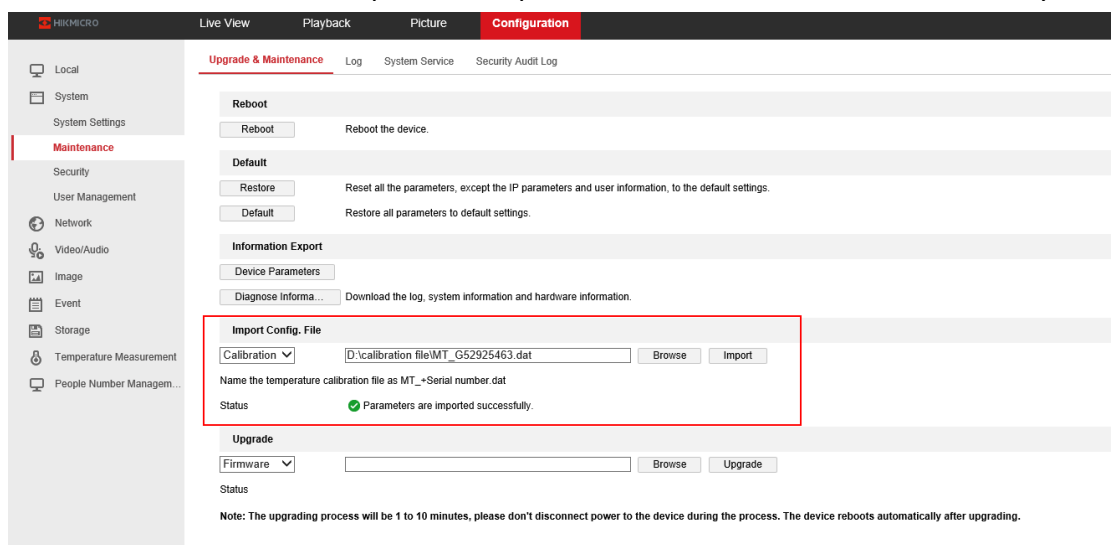


Figure 3

4. Support Audible Alarm Output for temperature measure alarm and number of people exception alarm. Sound type contains Warning and custom audio.

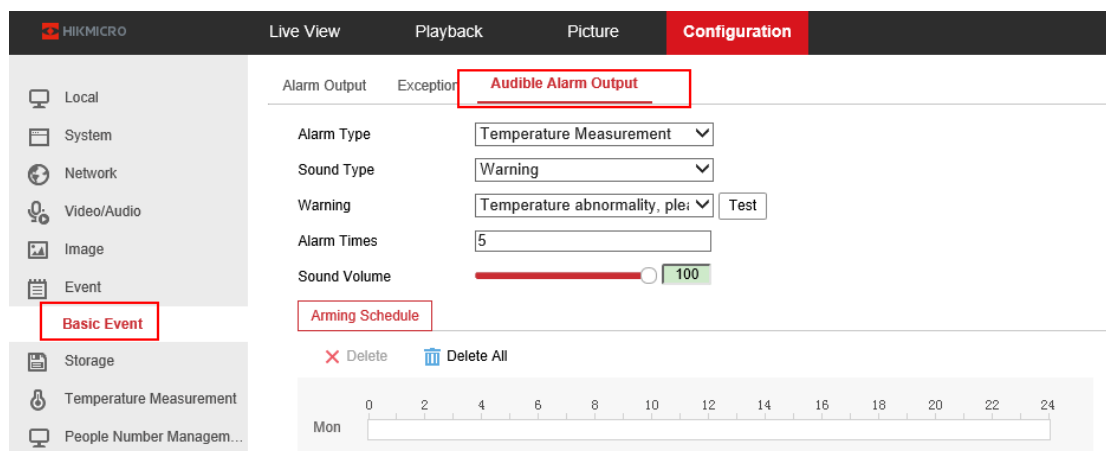


Figure 4

- Number of People Exception alarm only supports custom audio.

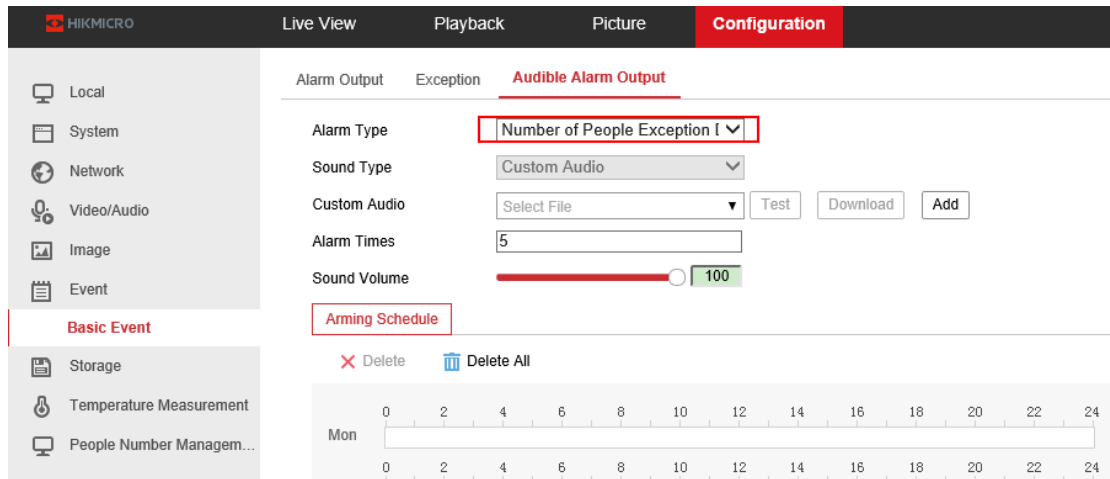


Figure 5

Upload Custom Audio

* Custom Audio

i Upload a .wav mono sound audio file with the size smaller than 512 KB and sampling rate as 8 KHz.

* Audio Name

Figure 6

5. Support to use a web browser on smart phone or computer (with Wi-Fi function) to connect the device to a Wi-Fi network.
 - Power on the detector and generate hotspot. It shows SSID: HM-AP_+VF code, password is 8-digits of SN. Connect to the hotspot after enter the password and web browser will automatically go to 192.168.1.10.
 - In the pop-up window, select and connect the Wi-Fi network that the device needs to connect.



Figure 7

6. Hold reset button before power on the device to restore all the parameters to the factory default.



Figure 8

Note: Hold the button should keep 10 seconds after power on the device.

7. Support red and blue indicator to show different device status.

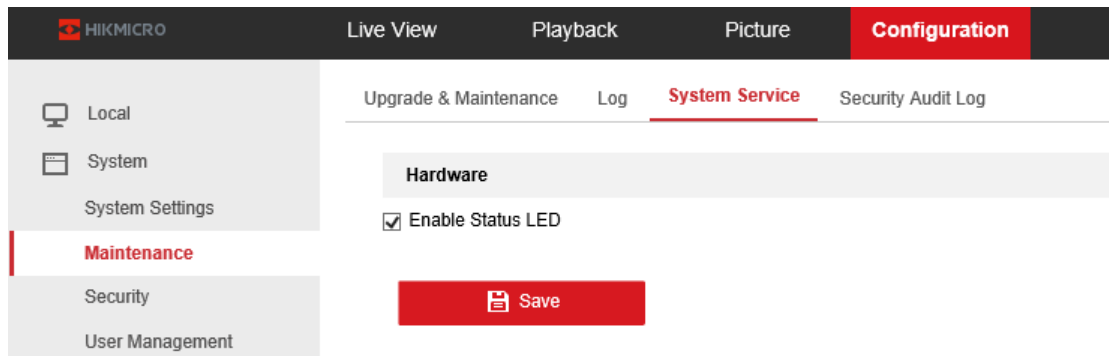


Figure 9

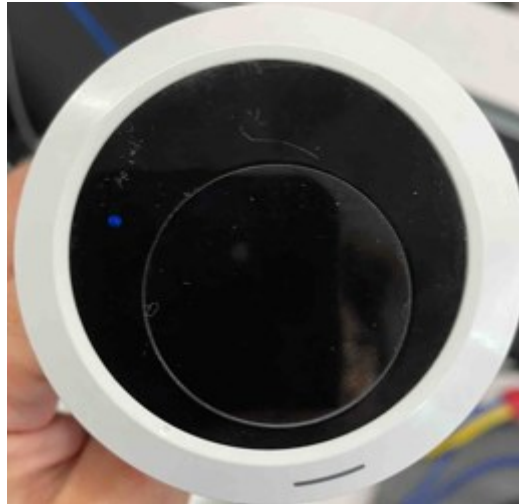


Figure 10

- The red indicator keeps on when device in startup status.
- The red indicator blinks slowly when connection failed.
- The blue indicator blinks rapidly when device finished the startup status. Then device ready to connect to Wi-Fi.
- The blue indicator blinks slowly when connection succeeded.

Third-Party Integration

Thermal camera Version	V5.5.46 build 211126				
Test equipment	Milestone	Mirasys	Seetec	ONSSI	Axonsoft
Version	Milestone XProtect series with Corporate 2017 R2	VMS Enterprise, VMS Pro	Cayuga R10	Ocularis 5.4(5.4.0.128)	Intellect 4.10.1
Live view(display Temperature info)	x	√	x	x	x
Live view(display People Number Exception Detection info)	x	x	x	x	x
Live view(display People Existence Detection info)	x	x	x	x	x
Receive Temperature info	√	√	x	x	x
Receive People Number Exception Detection info	x	x	x	x	x
Receive People Existence Detection info	x	x	x	x	x

Client and Platform Compatibility

Thermal camera Version		V5.5.46 build 211126		
Test equipment	iVMS-4200	I series NVR	IE explorer	Hik connect
Version	V1.6.6.2 build20211119	DS-76XX-I16 NVR V4.51.000 210622	IE10+	1.5.1.2
Live view(display Temperature info)	√	√(Web,4200)	√	√
Live view(People Number Exception Detection)	√	√(Web,4200)	√	√
Live view(People Existence Detection)	√	√(Web,4200)	√	√
Setup Temperature Measurement	√	√(4200, only support linkage)	√	×
Setup People Number Exception Detection	×	×(Web,4200)	√	×
Setup People Existence Detection	×	×(Web,4200)	√	×
Receive Temperature info	√	√(4200)	×	×
Receive People Number Exception Detection info	√	×(Web)	×	×
Receive People Existence Detection info	√	×(Web)	×	×
Playback(display Temperature info)	√	√(Web,4200)	√	√
Playback(display People Number Exception Detection info)	√	√(Web,4200)	√	×
Playback(display People Existence Detection info)	√	√(Web,4200)	√	×

Remarks:

- Please use this Document with the guidance and assistance of professionals trained in supporting the Product.
- Pictures, charts, images and all other information hereinafter are for description and explanation only.
- HIKMICRO reserves the right to change, alter or withdraw the above notification without prior notice.
- Product design and specifications are subject to change without prior notice.
- The HIKMICRO firmware may contain errors known as errata, which may cause the product to deviate from published specifications. Current characterized errata are available on request.
- HIKMICRO is not liable for any typing or printing errors.

Hangzhou Microimage Software Co., Ltd

Room 313, Unit B, Building 2, NO.399 Danfeng Road,
Xixing Subdistrict, Binjiang District, Hangzhou, Zhejiang
[Tel:+86+571-8807-5998](tel:+86+571-8807-5998)

<http://www.hikmicrotech.com/en/>