

TEST REPORT

Client Name	Hangzhou Hikvision Digital Technology Co., Ltd.
Name of product	Ethernet Switch
Manufacturer	Hangzhou Hikvision Digital Technology Co., Ltd.
Model	DS-3E0109P-S/M, DS-3E0109P-E/M
Test sort	Commission Test



CCIC Southern Electronic Product Testing (Shenzhen) Co., Ltd.

Address: Electronic Testing Building, No. 43 Shahe Road, Xili Jiedao, Nanshan District, Shenzhen, Guangdong, China

P.C.: 518055

TEL: 86-755-26627338

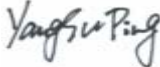
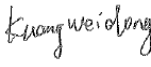

Internet: [http:// www.ccic-set.com](http://www.ccic-set.com)

FAX: 86-755-26627238

E-Mail: manager@ccic-set.com



Customer information	Client	Hangzhou Hikvision Digital Technology Co., Ltd.
	Address	No.555 Qianmo Road, Binjiang District, Hangzhou 310052, China
Sample information	Name of sample	Ethernet Switch
	Model	DS-3E0109P-S/M, DS-3E0109P-E/M
	Manufacturer	Hangzhou Hikvision Digital Technology Co., Ltd.
	Address	No.555 Qianmo Road, Binjiang District, Hangzhou 310052, China
	Factory	Hangzhou Hikvision Digital Technology Co., Ltd.
	Address	No.555 Qianmo Road, Binjiang District, Hangzhou 310052, China
Test information	Sample received	Jan. 09, 2017
	Testing date	Jan. 09, 2017~ Jan. 17, 2017
	Test sort	Commission Test
	Requested/item	RoHS directive 2011/65/EU
	Standard/ Foundation	(1)With reference to IEC 62321-3-1:2013, scanning by XRF Spectroscopy (2)Chemical test method: With reference to IEC 62321-5:2013, determination of Lead, Cadmium, by ICP With reference to IEC 62321-4:2013, determination of Mercury by ICP With reference to IEC 62321:2008 & IEC 62321-7-1:2015, determination of Hexavalent Chromium by Colorimetric method With reference to IEC 62321-6:2015, determination of PBBs, PBDEs by GC-MS.
	Conclusion	The tested sample complied with RoHS directive (2011/65/EU).
Remark	All test result quote from report No.SET2017-00384.	

Tested By:  Checked By:  Approved By: 

Date: Jul. 14, 2017 Date: Jul. 14, 2017 Date: Jul. 14, 2017



Test result:

No.	COMPONENTS	Item	Results of EDXRF (P/F/D)	Results of Testing (mg/kg)	Chemical testing limit (mg/kg)	Conclusion (P/F)
1	Gray coating	Cd	P	/	<100	P
		Cr(VI)	P	/	<1000	P
		Hg	P	/	<1000	P
		Pb	P	/	<1000	P
		PBBs	P	/	<1000	P
		PBDEs	P	/	<1000	P
2	Silvery metal cover	Cd	P	/	<100	P
		Cr(VI)	P	/	<1000	P
		Hg	P	/	<1000	P
		Pb	P	/	<1000	P
		PBBs	/	/	<1000	/
		PBDEs	/	/	<1000	/
3	White label	Cd	P	/	<100	P
		Cr(VI)	P	/	<1000	P
		Hg	P	/	<1000	P
		Pb	P	/	<1000	P
		PBBs	P	/	<1000	P
		PBDEs	P	/	<1000	P
4	Silvery metal bolt holder	Cd	P	/	<100	P
		Cr(VI)	P	/	<1000	P
		Hg	P	/	<1000	P
		Pb	P	/	<1000	P
		PBBs	/	/	<1000	/
		PBDEs	/	/	<1000	/
5	White label	Cd	P	/	<100	P
		Cr(VI)	P	/	<1000	P
		Hg	P	/	<1000	P
		Pb	P	/	<1000	P
		PBBs	P	/	<1000	P
		PBDEs	P	/	<1000	P
6	PCB baseboard	Cd	P	/	<100	P
		Cr(VI)	P	/	<1000	P
		Hg	P	/	<1000	P
		Pb	P	/	<1000	P
		PBBs	D	N.D.	<1000	P
		PBDEs	D	N.D.	<1000	P



No.	COMPONENTS	Item	Results of EDXRF (P/F/D)	Results of Testing (mg/kg)	Chemical testing limit (mg/kg)	Conclusion (P/F)
7	Blue coating	Cd	P	/	<100	P
		Cr(VI)	P	/	<1000	P
		Hg	P	/	<1000	P
		Pb	P	/	<1000	P
		PBBs	P	/	<1000	P
		PBDEs	P	/	<1000	P
8	Copper foil	Cd	P	/	<100	P
		Cr(VI)	P	/	<1000	P
		Hg	P	/	<1000	P
		Pb	P	/	<1000	P
		PBBs	/	/	<1000	/
		PBDEs	/	/	<1000	/
9	Soldering tin	Cd	P	/	<100	P
		Cr(VI)	P	/	<1000	P
		Hg	P	/	<1000	P
		Pb	P	/	<1000	P
		PBBs	/	/	<1000	/
		PBDEs	/	/	<1000	/
10	U14 black IC body	Cd	P	/	<100	P
		Cr(VI)	P	/	<1000	P
		Hg	P	/	<1000	P
		Pb	P	/	<1000	P
		PBBs	P	/	<1000	P
		PBDEs	P	/	<1000	P
11	D22 black diode body	Cd	P	/	<100	P
		Cr(VI)	P	/	<1000	P
		Hg	P	/	<1000	P
		Pb	P	/	<1000	P
		PBBs	P	/	<1000	P
		PBDEs	P	/	<1000	P
12	Yellow capacitance body	Cd	P	/	<100	P
		Cr(VI)	P	/	<1000	P
		Hg	P	/	<1000	P
		Pb	P	/	<1000	P
		PBBs	P	/	<1000	P
		PBDEs	P	/	<1000	P



No.	COMPONENTS	Item	Results of EDXRF (P/F/D)	Results of Testing (mg/kg)	Chemical testing limit (mg/kg)	Conclusion (P/F)
13	Black resistance body	Cd	P	/	<100	P
		Cr(VI)	P	/	<1000	P
		Hg	P	/	<1000	P
		Pb	P	/	<1000	P
		PBBs	P	/	<1000	P
		PBDEs	P	/	<1000	P
14	F1 black diode body	Cd	P	/	<100	P
		Cr(VI)	P	/	<1000	P
		Hg	P	/	<1000	P
		Pb	P	/	<1000	P
		PBBs	P	/	<1000	P
		PBDEs	P	/	<1000	P
15	J2 black plastic socket	Cd	P	/	<100	P
		Cr(VI)	P	/	<1000	P
		Hg	P	/	<1000	P
		Pb	P	/	<1000	P
		PBBs	D	N.D.	<1000	P
		PBDEs	D	N.D.	<1000	P
16	Silvery metal inner core	Cd	P	/	<100	P
		Cr(VI)	P	/	<1000	P
		Hg	P	/	<1000	P
		Pb	P	/	<1000	P
		PBBs	/	/	<1000	/
		PBDEs	/	/	<1000	/
17	Silvery metal pin	Cd	P	/	<100	P
		Cr(VI)	D	Negative	<1000	P
		Hg	P	/	<1000	P
		Pb	P	/	<1000	P
		PBBs	/	/	<1000	/
		PBDEs	/	/	<1000	/
18	D14 black diode body	Cd	P	/	<100	P
		Cr(VI)	P	/	<1000	P
		Hg	P	/	<1000	P
		Pb	P	/	<1000	P
		PBBs	D	N.D.	<1000	P
		PBDEs	D	N.D.	<1000	P



No.	COMPONENTS	Item	Results of EDXRF (P/F/D)	Results of Testing (mg/kg)	Chemical testing limit (mg/kg)	Conclusion (P/F)
19	C193 green plastic outer jacket	Cd	P	/	<100	P
		Cr(VI)	P	/	<1000	P
		Hg	P	/	<1000	P
		Pb	P	/	<1000	P
		PBBs	P	/	<1000	P
		PBDEs	P	/	<1000	P
20	Silvery metal cover	Cd	P	/	<100	P
		Cr(VI)	P	/	<1000	P
		Hg	P	/	<1000	P
		Pb	P	/	<1000	P
		PBBs	/	/	<1000	/
		PBDEs	/	/	<1000	/
21	Black rubber plug	Cd	P	/	<100	P
		Cr(VI)	P	/	<1000	P
		Hg	P	/	<1000	P
		Pb	P	/	<1000	P
		PBBs	P	/	<1000	P
		PBDEs	P	/	<1000	P
22	Yellow paper	Cd	P	/	<100	P
		Cr(VI)	P	/	<1000	P
		Hg	P	/	<1000	P
		Pb	P	/	<1000	P
		PBBs	P	/	<1000	P
		PBDEs	P	/	<1000	P
23	Gray metal foil	Cd	P	/	<100	P
		Cr(VI)	P	/	<1000	P
		Hg	P	/	<1000	P
		Pb	P	/	<1000	P
		PBBs	/	/	<1000	/
		PBDEs	/	/	<1000	/
24	Silvery metal pin	Cd	P	/	<100	P
		Cr(VI)	P	/	<1000	P
		Hg	P	/	<1000	P
		Pb	P	/	<1000	P
		PBBs	/	/	<1000	/
		PBDEs	/	/	<1000	/



No.	COMPONENTS	Item	Results of EDXRF (P/F/D)	Results of Testing (mg/kg)	Chemical testing limit (mg/kg)	Conclusion (P/F)
25	U13 black IC body	Cd	P	/	<100	P
		Cr(VI)	P	/	<1000	P
		Hg	P	/	<1000	P
		Pb	P	/	<1000	P
		PBBs	P	/	<1000	P
		PBDEs	P	/	<1000	P
26	L6 gray magnet core	Cd	P	/	<100	P
		Cr(VI)	D	Negative	<1000	P
		Hg	P	/	<1000	P
		Pb	P	/	<1000	P
		PBBs	/	/	<1000	/
		PBDEs	/	/	<1000	/
27	Coppery metal wire core	Cd	P	/	<100	P
		Cr(VI)	P	/	<1000	P
		Hg	P	/	<1000	P
		Pb	P	/	<1000	P
		PBBs	/	/	<1000	/
		PBDEs	/	/	<1000	/
28	Silvery metal pin	Cd	P	/	<100	P
		Cr(VI)	P	/	<1000	P
		Hg	P	/	<1000	P
		Pb	P	/	<1000	P
		PBBs	/	/	<1000	/
		PBDEs	/	/	<1000	/
29	C192 black plastic outer jacket	Cd	P	/	<100	P
		Cr(VI)	P	/	<1000	P
		Hg	P	/	<1000	P
		Pb	P	/	<1000	P
		PBBs	P	/	<1000	P
		PBDEs	P	/	<1000	P
30	Y2 silvery metal cover	Cd	P	/	<100	P
		Cr(VI)	P	/	<1000	P
		Hg	P	/	<1000	P
		Pb	P	/	<1000	P
		PBBs	/	/	<1000	/
		PBDEs	/	/	<1000	/



No.	COMPONENTS	Item	Results of EDXRF (P/F/D)	Results of Testing (mg/kg)	Chemical testing limit (mg/kg)	Conclusion (P/F)
31	Inner crystal object	Cd	P	/	<100	P
		Cr(VI)	P	/	<1000	P
		Hg	P	/	<1000	P
		Pb	P	/	<1000	P
		PBBs	P	/	<1000	P
		PBDEs	P	/	<1000	P
32	Silvery metal pin	Cd	P	/	<100	P
		Cr(VI)	P	/	<1000	P
		Hg	P	/	<1000	P
		Pb	P	/	<1000	P
		PBBs	/	/	<1000	/
		PBDEs	/	/	<1000	/
33	Black plastic washer	Cd	P	/	<100	P
		Cr(VI)	P	/	<1000	P
		Hg	P	/	<1000	P
		Pb	P	/	<1000	P
		PBBs	P	/	<1000	P
		PBDEs	P	/	<1000	P
34	U5 black IC body	Cd	P	/	<100	P
		Cr(VI)	P	/	<1000	P
		Hg	P	/	<1000	P
		Pb	P	/	<1000	P
		PBBs	P	/	<1000	P
		PBDEs	P	/	<1000	P
35	U1 black IC body	Cd	P	/	<100	P
		Cr(VI)	P	/	<1000	P
		Hg	P	/	<1000	P
		Pb	P	/	<1000	P
		PBBs	P	/	<1000	P
		PBDEs	P	/	<1000	P
36	Silvery metal pin	Cd	P	/	<100	P
		Cr(VI)	P	/	<1000	P
		Hg	P	/	<1000	P
		Pb	P	/	<1000	P
		PBBs	/	/	<1000	/
		PBDEs	/	/	<1000	/



No.	COMPONENTS	Item	Results of EDXRF (P/F/D)	Results of Testing (mg/kg)	Chemical testing limit (mg/kg)	Conclusion (P/F)
37	U4 black IC body	Cd	P	/	<100	P
		Cr(VI)	P	/	<1000	P
		Hg	P	/	<1000	P
		Pb	P	/	<1000	P
		PBBs	P	/	<1000	P
		PBDEs	P	/	<1000	P
38	SW1 black plastic key	Cd	P	/	<100	P
		Cr(VI)	P	/	<1000	P
		Hg	P	/	<1000	P
		Pb	P	/	<1000	P
		PBBs	P	/	<1000	P
		PBDEs	P	/	<1000	P
39	Silvery metal cover	Cd	P	/	<100	P
		Cr(VI)	P	/	<1000	P
		Hg	P	/	<1000	P
		Pb	P	/	<1000	P
		PBBs	/	/	<1000	/
		PBDEs	/	/	<1000	/
40	Yellow PCB	Cd	P	/	<100	P
		Cr(VI)	P	/	<1000	P
		Hg	P	/	<1000	P
		Pb	P	/	<1000	P
		PBBs	P	/	<1000	P
		PBDEs	P	/	<1000	P
41	Silvery metal sheet	Cd	P	/	<100	P
		Cr(VI)	P	/	<1000	P
		Hg	P	/	<1000	P
		Pb	P	/	<1000	P
		PBBs	/	/	<1000	/
		PBDEs	/	/	<1000	/
42	Silvery metal pin	Cd	P	/	<100	P
		Cr(VI)	P	/	<1000	P
		Hg	P	/	<1000	P
		Pb	P	/	<1000	P
		PBBs	/	/	<1000	/
		PBDEs	/	/	<1000	/



No.	COMPONENTS	Item	Results of EDXRF (P/F/D)	Results of Testing (mg/kg)	Chemical testing limit (mg/kg)	Conclusion (P/F)
43	T1 black plastic cover	Cd	P	/	<100	P
		Cr(VI)	P	/	<1000	P
		Hg	P	/	<1000	P
		Pb	P	/	<1000	P
		PBBs	P	/	<1000	P
		PBDEs	P	/	<1000	P
44	Gray magnet core	Cd	P	/	<100	P
		Cr(VI)	P	/	<1000	P
		Hg	P	/	<1000	P
		Pb	P	/	<1000	P
		PBBs	/	/	<1000	/
		PBDEs	/	/	<1000	/
45	Colorized metal wire core	Cd	P	/	<100	P
		Cr(VI)	P	/	<1000	P
		Hg	P	/	<1000	P
		Pb	P	/	<1000	P
		PBBs	/	/	<1000	/
		PBDEs	/	/	<1000	/
46	Silvery metal pin	Cd	P	/	<100	P
		Cr(VI)	P	/	<1000	P
		Hg	P	/	<1000	P
		Pb	P	/	<1000	P
		PBBs	/	/	<1000	/
		PBDEs	/	/	<1000	/
47	T3 black plastic cover	Cd	P	/	<100	P
		Cr(VI)	P	/	<1000	P
		Hg	P	/	<1000	P
		Pb	P	/	<1000	P
		PBBs	P	/	<1000	P
		PBDEs	P	/	<1000	P
48	Gray magnet core	Cd	P	/	<100	P
		Cr(VI)	P	/	<1000	P
		Hg	P	/	<1000	P
		Pb	P	/	<1000	P
		PBBs	/	/	<1000	/
		PBDEs	/	/	<1000	/



No.	COMPONENTS	Item	Results of EDXRF (P/F/D)	Results of Testing (mg/kg)	Chemical testing limit (mg/kg)	Conclusion (P/F)
49	Colorized metal wire core	Cd	P	/	<100	P
		Cr(VI)	P	/	<1000	P
		Hg	P	/	<1000	P
		Pb	P	/	<1000	P
		PBBs	/	/	<1000	/
		PBDEs	/	/	<1000	/
50	Silvery metal pin	Cd	P	/	<100	P
		Cr(VI)	P	/	<1000	P
		Hg	P	/	<1000	P
		Pb	P	/	<1000	P
		PBBs	/	/	<1000	/
		PBDEs	/	/	<1000	/
51	U9 black IC body	Cd	P	/	<100	P
		Cr(VI)	P	/	<1000	P
		Hg	P	/	<1000	P
		Pb	P	/	<1000	P
		PBBs	P	/	<1000	P
		PBDEs	P	/	<1000	P
52	U6 black IC body	Cd	P	/	<100	P
		Cr(VI)	P	/	<1000	P
		Hg	P	/	<1000	P
		Pb	P	/	<1000	P
		PBBs	P	/	<1000	P
		PBDEs	P	/	<1000	P
53	J3 black plastic socket	Cd	P	/	<100	P
		Cr(VI)	P	/	<1000	P
		Hg	P	/	<1000	P
		Pb	P	/	<1000	P
		PBBs	D	N.D.	<1000	P
		PBDEs	D	N.D.	<1000	P
54	Coppery metal contact pin	Cd	P	/	<100	P
		Cr(VI)	P	/	<1000	P
		Hg	P	/	<1000	P
		Pb	P	/	<1000	P
		PBBs	/	/	<1000	/
		PBDEs	/	/	<1000	/



No.	COMPONENTS	Item	Results of EDXRF (P/F/D)	Results of Testing (mg/kg)	Chemical testing limit (mg/kg)	Conclusion (P/F)
55	LED1 black plastic socket	Cd	P	/	<100	P
		Cr(VI)	P	/	<1000	P
		Hg	P	/	<1000	P
		Pb	P	/	<1000	P
		PBBs	D	N.D.	<1000	P
		PBDEs	D	N.D.	<1000	P
56	Green transparent LED body	Cd	P	/	<100	P
		Cr(VI)	P	/	<1000	P
		Hg	P	/	<1000	P
		Pb	P	/	<1000	P
		PBBs	P	/	<1000	P
		PBDEs	P	/	<1000	P
57	Silvery metal pin	Cd	P	/	<100	P
		Cr(VI)	P	/	<1000	P
		Hg	P	/	<1000	P
		Pb	P	/	<1000	P
		PBBs	/	/	<1000	/
		PBDEs	/	/	<1000	/
58	RJ1 black plastic socket	Cd	P	/	<100	P
		Cr(VI)	P	/	<1000	P
		Hg	P	/	<1000	P
		Pb	P	/	<1000	P
		PBBs	D	N.D.	<1000	P
		PBDEs	D	N.D.	<1000	P
59	Yellow LED body	Cd	P	/	<100	P
		Cr(VI)	P	/	<1000	P
		Hg	P	/	<1000	P
		Pb	P	/	<1000	P
		PBBs	D	N.D.	<1000	P
		PBDEs	D	N.D.	<1000	P
60	Green LED body	Cd	P	/	<100	P
		Cr(VI)	P	/	<1000	P
		Hg	P	/	<1000	P
		Pb	P	/	<1000	P
		PBBs	D	N.D.	<1000	P
		PBDEs	D	N.D.	<1000	P



No.	COMPONENTS	Item	Results of EDXRF (P/F/D)	Results of Testing (mg/kg)	Chemical testing limit (mg/kg)	Conclusion (P/F)
61	Silvery metal pin	Cd	P	/	<100	P
		Cr(VI)	P	/	<1000	P
		Hg	P	/	<1000	P
		Pb	P	/	<1000	P
		PBBs	/	/	<1000	/
		PBDEs	/	/	<1000	/
62	Adapter black plastic face-piece	Cd	P	/	<100	P
		Cr(VI)	P	/	<1000	P
		Hg	P	/	<1000	P
		Pb	P	/	<1000	P
		PBBs	P	/	<1000	P
		PBDEs	P	/	<1000	P
63	Black plastic bottom cover	Cd	P	/	<100	P
		Cr(VI)	P	/	<1000	P
		Hg	P	/	<1000	P
		Pb	P	/	<1000	P
		PBBs	P	/	<1000	P
		PBDEs	P	/	<1000	P
64	Green label	Cd	P	/	<100	P
		Cr(VI)	P	/	<1000	P
		Hg	P	/	<1000	P
		Pb	P	/	<1000	P
		PBBs	P	/	<1000	P
		PBDEs	P	/	<1000	P
65	Black plastic wire jacket	Cd	P	/	<100	P
		Cr(VI)	P	/	<1000	P
		Hg	P	/	<1000	P
		Pb	P	/	<1000	P
		PBBs	P	/	<1000	P
		PBDEs	P	/	<1000	P
66	Coppery metal wire core	Cd	P	/	<100	P
		Cr(VI)	P	/	<1000	P
		Hg	P	/	<1000	P
		Pb	P	/	<1000	P
		PBBs	/	/	<1000	/
		PBDEs	/	/	<1000	/



No.	COMPONENTS	Item	Results of EDXRF (P/F/D)	Results of Testing (mg/kg)	Chemical testing limit (mg/kg)	Conclusion (P/F)
67	Black plastic protecting wire bush	Cd	P	/	<100	P
		Cr(VI)	P	/	<1000	P
		Hg	P	/	<1000	P
		Pb	P	/	<1000	P
		PBBs	P	/	<1000	P
		PBDEs	P	/	<1000	P
68	Silvery metal plug	Cd	P	/	<100	P
		Cr(VI)	P	/	<1000	P
		Hg	P	/	<1000	P
		Pb	P	/	<1000	P
		PBBs	/	/	<1000	/
		PBDEs	/	/	<1000	/
69	Black plastic framework	Cd	P	/	<100	P
		Cr(VI)	P	/	<1000	P
		Hg	P	/	<1000	P
		Pb	P	/	<1000	P
		PBBs	D	N.D.	<1000	P
		PBDEs	D	N.D.	<1000	P
70	Soldering tin	Cd	P	/	<100	P
		Cr(VI)	P	/	<1000	P
		Hg	P	/	<1000	P
		Pb	P	/	<1000	P
		PBBs	/	/	<1000	/
		PBDEs	/	/	<1000	/
71	Black plastic bundle	Cd	P	/	<100	P
		Cr(VI)	P	/	<1000	P
		Hg	P	/	<1000	P
		Pb	P	/	<1000	P
		PBBs	P	/	<1000	P
		PBDEs	P	/	<1000	P
72	Silvery metal wire core	Cd	P	/	<100	P
		Cr(VI)	P	/	<1000	P
		Hg	P	/	<1000	P
		Pb	P	/	<1000	P
		PBBs	/	/	<1000	/
		PBDEs	/	/	<1000	/



No.	COMPONENTS	Item	Results of EDXRF (P/F/D)	Results of Testing (mg/kg)	Chemical testing limit (mg/kg)	Conclusion (P/F)
73	PCB baseboard	Cd	P	/	<100	P
		Cr(VI)	P	/	<1000	P
		Hg	P	/	<1000	P
		Pb	P	/	<1000	P
		PBBs	D	N.D.	<1000	P
		PBDEs	D	N.D.	<1000	P
74	Green coating	Cd	P	/	<100	P
		Cr(VI)	P	/	<1000	P
		Hg	P	/	<1000	P
		Pb	P	/	<1000	P
		PBBs	P	/	<1000	P
		PBDEs	P	/	<1000	P
75	Copper foil	Cd	P	/	<100	P
		Cr(VI)	P	/	<1000	P
		Hg	P	/	<1000	P
		Pb	P	/	<1000	P
		PBBs	/	/	<1000	/
		PBDEs	/	/	<1000	/
76	Soldering tin	Cd	P	/	<100	P
		Cr(VI)	P	/	<1000	P
		Hg	P	/	<1000	P
		Pb	P	/	<1000	P
		PBBs	/	/	<1000	/
		PBDEs	/	/	<1000	/
77	Black resistance body	Cd	P	/	<100	P
		Cr(VI)	P	/	<1000	P
		Hg	P	/	<1000	P
		Pb	P	/	<1000	P
		PBBs	P	/	<1000	P
		PBDEs	P	/	<1000	P
78	Yellow capacitance body	Cd	P	/	<100	P
		Cr(VI)	P	/	<1000	P
		Hg	P	/	<1000	P
		Pb	P	/	<1000	P
		PBBs	P	/	<1000	P
		PBDEs	P	/	<1000	P



No.	COMPONENTS	Item	Results of EDXRF (P/F/D)	Results of Testing (mg/kg)	Chemical testing limit (mg/kg)	Conclusion (P/F)
79	U3 black IC body	Cd	P	/	<100	P
		Cr(VI)	P	/	<1000	P
		Hg	P	/	<1000	P
		Pb	P	/	<1000	P
		PBBs	P	/	<1000	P
		PBDEs	P	/	<1000	P
80	Glass diode body	Cd	P	/	<100	P
		Cr(VI)	P	/	<1000	P
		Hg	P	/	<1000	P
		Pb	#P	/	<1000	#P
		PBBs	P	/	<1000	P
		PBDEs	P	/	<1000	P
81	RV1 blue body	Cd	P	/	<100	P
		Cr(VI)	P	/	<1000	P
		Hg	P	/	<1000	P
		Pb	P	/	<1000	P
		PBBs	P	/	<1000	P
		PBDEs	P	/	<1000	P
82	Silvery metal pin	Cd	P	/	<100	P
		Cr(VI)	P	/	<1000	P
		Hg	P	/	<1000	P
		Pb	P	/	<1000	P
		PBBs	/	/	<1000	/
		PBDEs	/	/	<1000	/
83	LF1 green coating	Cd	P	/	<100	P
		Cr(VI)	P	/	<1000	P
		Hg	P	/	<1000	P
		Pb	P	/	<1000	P
		PBBs	P	/	<1000	P
		PBDEs	P	/	<1000	P
84	Gray magnet core	Cd	P	/	<100	P
		Cr(VI)	P	/	<1000	P
		Hg	P	/	<1000	P
		Pb	P	/	<1000	P
		PBBs	/	/	<1000	/
		PBDEs	/	/	<1000	/



No.	COMPONENTS	Item	Results of EDXRF (P/F/D)	Results of Testing (mg/kg)	Chemical testing limit (mg/kg)	Conclusion (P/F)
85	Colorized metal wire core	Cd	P	/	<100	P
		Cr(VI)	P	/	<1000	P
		Hg	P	/	<1000	P
		Pb	P	/	<1000	P
		PBBs	/	/	<1000	/
		PBDEs	/	/	<1000	/
86	White colloid	Cd	P	/	<100	P
		Cr(VI)	P	/	<1000	P
		Hg	P	/	<1000	P
		Pb	P	/	<1000	P
		PBBs	P	/	<1000	P
		PBDEs	P	/	<1000	P
87	Black plastic socket	Cd	P	/	<100	P
		Cr(VI)	P	/	<1000	P
		Hg	P	/	<1000	P
		Pb	P	/	<1000	P
		PBBs	D	N.D.	<1000	P
		PBDEs	D	N.D.	<1000	P
88	Silvery metal contact pin	Cd	P	/	<100	P
		Cr(VI)	P	/	<1000	P
		Hg	P	/	<1000	P
		Pb	P	/	<1000	P
		PBBs	/	/	<1000	/
		PBDEs	/	/	<1000	/
89	RT1 black body	Cd	P	/	<100	P
		Cr(VI)	P	/	<1000	P
		Hg	P	/	<1000	P
		Pb	P	/	<1000	P
		PBBs	P	/	<1000	P
		PBDEs	P	/	<1000	P
90	Silvery metal pin	Cd	P	/	<100	P
		Cr(VI)	P	/	<1000	P
		Hg	P	/	<1000	P
		Pb	P	/	<1000	P
		PBBs	/	/	<1000	/
		PBDEs	/	/	<1000	/



No.	COMPONENTS	Item	Results of EDXRF (P/F/D)	Results of Testing (mg/kg)	Chemical testing limit (mg/kg)	Conclusion (P/F)
91	F1 black heat-shrinkable tubing	Cd	P	/	<100	P
		Cr(VI)	P	/	<1000	P
		Hg	P	/	<1000	P
		Pb	P	/	<1000	P
		PBBs	P	/	<1000	P
		PBDEs	P	/	<1000	P
92	Glass tube	Cd	P	/	<100	P
		Cr(VI)	P	/	<1000	P
		Hg	P	/	<1000	P
		Pb	P	/	<1000	P
		PBBs	P	/	<1000	P
		PBDEs	P	/	<1000	P
93	Silvery metal terminal	Cd	P	/	<100	P
		Cr(VI)	P	/	<1000	P
		Hg	P	/	<1000	P
		Pb	P	/	<1000	P
		PBBs	/	/	<1000	/
		PBDEs	/	/	<1000	/
94	Silvery metal wire core	Cd	P	/	<100	P
		Cr(VI)	P	/	<1000	P
		Hg	P	/	<1000	P
		Pb	P	/	<1000	P
		PBBs	/	/	<1000	/
		PBDEs	/	/	<1000	/
95	Silvery metal pin	Cd	P	/	<100	P
		Cr(VI)	P	/	<1000	P
		Hg	P	/	<1000	P
		Pb	P	/	<1000	P
		PBBs	/	/	<1000	/
		PBDEs	/	/	<1000	/
96	BD1 black body	Cd	P	/	<100	P
		Cr(VI)	P	/	<1000	P
		Hg	P	/	<1000	P
		Pb	P	/	<1000	P
		PBBs	D	N.D.	<1000	P
		PBDEs	D	N.D.	<1000	P



No.	COMPONENTS	Item	Results of EDXRF (P/F/D)	Results of Testing (mg/kg)	Chemical testing limit (mg/kg)	Conclusion (P/F)
97	Silvery metal pin	Cd	P	/	<100	P
		Cr(VI)	P	/	<1000	P
		Hg	P	/	<1000	P
		Pb	P	/	<1000	P
		PBBs	/	/	<1000	/
		PBDEs	/	/	<1000	/
98	LF2 green coating	Cd	P	/	<100	P
		Cr(VI)	P	/	<1000	P
		Hg	P	/	<1000	P
		Pb	P	/	<1000	P
		PBBs	P	/	<1000	P
		PBDEs	P	/	<1000	P
99	Gray magnet core	Cd	P	/	<100	P
		Cr(VI)	P	/	<1000	P
		Hg	P	/	<1000	P
		Pb	P	/	<1000	P
		PBBs	/	/	<1000	/
		PBDEs	/	/	<1000	/
100	Yellow PCB	Cd	P	/	<100	P
		Cr(VI)	P	/	<1000	P
		Hg	P	/	<1000	P
		Pb	P	/	<1000	P
		PBBs	P	/	<1000	P
		PBDEs	P	/	<1000	P
101	Black colloid	Cd	P	/	<100	P
		Cr(VI)	P	/	<1000	P
		Hg	P	/	<1000	P
		Pb	P	/	<1000	P
		PBBs	P	/	<1000	P
		PBDEs	P	/	<1000	P
102	Coppery metal wire core	Cd	P	/	<100	P
		Cr(VI)	P	/	<1000	P
		Hg	P	/	<1000	P
		Pb	P	/	<1000	P
		PBBs	/	/	<1000	/
		PBDEs	/	/	<1000	/



No.	COMPONENTS	Item	Results of EDXRF (P/F/D)	Results of Testing (mg/kg)	Chemical testing limit (mg/kg)	Conclusion (P/F)
103	C6 blue capacitance body	Cd	P	/	<100	P
		Cr(VI)	P	/	<1000	P
		Hg	P	/	<1000	P
		Pb	P	/	<1000	P
		PBBs	P	/	<1000	P
		PBDEs	P	/	<1000	P
104	Gray glue cushion	Cd	P	/	<100	P
		Cr(VI)	P	/	<1000	P
		Hg	P	/	<1000	P
		Pb	P	/	<1000	P
		PBBs	P	/	<1000	P
		PBDEs	P	/	<1000	P
105	EC1 brown plastic outer jacket	Cd	P	/	<100	P
		Cr(VI)	P	/	<1000	P
		Hg	P	/	<1000	P
		Pb	P	/	<1000	P
		PBBs	P	/	<1000	P
		PBDEs	P	/	<1000	P
106	Silvery metal cover	Cd	P	/	<100	P
		Cr(VI)	P	/	<1000	P
		Hg	P	/	<1000	P
		Pb	P	/	<1000	P
		PBBs	/	/	<1000	/
		PBDEs	/	/	<1000	/
107	Black rubber plug	Cd	P	/	<100	P
		Cr(VI)	P	/	<1000	P
		Hg	P	/	<1000	P
		Pb	P	/	<1000	P
		PBBs	P	/	<1000	P
		PBDEs	P	/	<1000	P
108	Yellow paper	Cd	P	/	<100	P
		Cr(VI)	P	/	<1000	P
		Hg	P	/	<1000	P
		Pb	P	/	<1000	P
		PBBs	P	/	<1000	P
		PBDEs	P	/	<1000	P



No.	COMPONENTS	Item	Results of EDXRF (P/F/D)	Results of Testing (mg/kg)	Chemical testing limit (mg/kg)	Conclusion (P/F)
109	Gray metal foil	Cd	P	/	<100	P
		Cr(VI)	P	/	<1000	P
		Hg	P	/	<1000	P
		Pb	P	/	<1000	P
		PBBs	/	/	<1000	/
		PBDEs	/	/	<1000	/
110	Silvery metal pin	Cd	P	/	<100	P
		Cr(VI)	P	/	<1000	P
		Hg	P	/	<1000	P
		Pb	P	/	<1000	P
		PBBs	/	/	<1000	/
		PBDEs	/	/	<1000	/
111	Silvery metal jumper	Cd	P	/	<100	P
		Cr(VI)	P	/	<1000	P
		Hg	P	/	<1000	P
		Pb	P	/	<1000	P
		PBBs	/	/	<1000	/
		PBDEs	/	/	<1000	/
112	D3 black diode body	Cd	P	/	<100	P
		Cr(VI)	P	/	<1000	P
		Hg	P	/	<1000	P
		Pb	P	/	<1000	P
		PBBs	D	N.D.	<1000	P
		PBDEs	D	N.D.	<1000	P
113	Silvery metal pin	Cd	P	/	<100	P
		Cr(VI)	P	/	<1000	P
		Hg	P	/	<1000	P
		Pb	P	/	<1000	P
		PBBs	/	/	<1000	/
		PBDEs	/	/	<1000	/
114	HS1 silvery metal pin	Cd	P	/	<100	P
		Cr(VI)	P	/	<1000	P
		Hg	P	/	<1000	P
		Pb	P	/	<1000	P
		PBBs	/	/	<1000	/
		PBDEs	/	/	<1000	/



No.	COMPONENTS	Item	Results of EDXRF (P/F/D)	Results of Testing (mg/kg)	Chemical testing limit (mg/kg)	Conclusion (P/F)
115	Silvery metal sheet	Cd	P	/	<100	P
		Cr(VI)	P	/	<1000	P
		Hg	P	/	<1000	P
		Pb	P	/	<1000	P
		PBBs	/	/	<1000	/
		PBDEs	/	/	<1000	/
116	Q2 black audion body	Cd	P	/	<100	P
		Cr(VI)	P	/	<1000	P
		Hg	P	/	<1000	P
		Pb	P	/	<1000	P
		PBBs	P	/	<1000	P
		PBDEs	P	/	<1000	P
117	Gray magnet core	Cd	P	/	<100	P
		Cr(VI)	P	/	<1000	P
		Hg	P	/	<1000	P
		Pb	P	/	<1000	P
		PBBs	/	/	<1000	/
		PBDEs	/	/	<1000	/
118	Silvery metal pin	Cd	P	/	<100	P
		Cr(VI)	P	/	<1000	P
		Hg	P	/	<1000	P
		Pb	P	/	<1000	P
		PBBs	/	/	<1000	/
		PBDEs	/	/	<1000	/
119	Black metal screw	Cd	P	/	<100	P
		Cr(VI)	P	/	<1000	P
		Hg	P	/	<1000	P
		Pb	P	/	<1000	P
		PBBs	/	/	<1000	/
		PBDEs	/	/	<1000	/
120	Transformer yellow adhesive tape	Cd	P	/	<100	P
		Cr(VI)	P	/	<1000	P
		Hg	P	/	<1000	P
		Pb	P	/	<1000	P
		PBBs	P	/	<1000	P
		PBDEs	P	/	<1000	P



No.	COMPONENTS	Item	Results of EDXRF (P/F/D)	Results of Testing (mg/kg)	Chemical testing limit (mg/kg)	Conclusion (P/F)
121	Gray magnet core	Cd	P	/	<100	P
		Cr(VI)	P	/	<1000	P
		Hg	P	/	<1000	P
		Pb	P	/	<1000	P
		PBBs	/	/	<1000	/
		PBDEs	/	/	<1000	/
122	Black plastic framework	Cd	P	/	<100	P
		Cr(VI)	P	/	<1000	P
		Hg	P	/	<1000	P
		Pb	P	/	<1000	P
		PBBs	P	/	<1000	P
		PBDEs	P	/	<1000	P
123	Transparent plastic tube	Cd	P	/	<100	P
		Cr(VI)	P	/	<1000	P
		Hg	P	/	<1000	P
		Pb	P	/	<1000	P
		PBBs	P	/	<1000	P
		PBDEs	P	/	<1000	P
124	Coppery metal thick wire core	Cd	P	/	<100	P
		Cr(VI)	P	/	<1000	P
		Hg	P	/	<1000	P
		Pb	P	/	<1000	P
		PBBs	/	/	<1000	/
		PBDEs	/	/	<1000	/
125	Coppery metal thin wire core	Cd	P	/	<100	P
		Cr(VI)	P	/	<1000	P
		Hg	P	/	<1000	P
		Pb	P	/	<1000	P
		PBBs	/	/	<1000	/
		PBDEs	/	/	<1000	/
126	Coppery metal foil	Cd	P	/	<100	P
		Cr(VI)	P	/	<1000	P
		Hg	P	/	<1000	P
		Pb	P	/	<1000	P
		PBBs	/	/	<1000	/
		PBDEs	/	/	<1000	/



No.	COMPONENTS	Item	Results of EDXRF (P/F/D)	Results of Testing (mg/kg)	Chemical testing limit (mg/kg)	Conclusion (P/F)
127	Soldering tin of coppery metal foil	Cd	P	/	<100	P
		Cr(VI)	P	/	<1000	P
		Hg	P	/	<1000	P
		Pb	P	/	<1000	P
		PBBs	/	/	<1000	/
		PBDEs	/	/	<1000	/
128	Silvery metal pin	Cd	P	/	<100	P
		Cr(VI)	P	/	<1000	P
		Hg	P	/	<1000	P
		Pb	P	/	<1000	P
		PBBs	/	/	<1000	/
		PBDEs	/	/	<1000	/
129	EC5 green plastic outer jacket	Cd	P	/	<100	P
		Cr(VI)	P	/	<1000	P
		Hg	P	/	<1000	P
		Pb	P	/	<1000	P
		PBBs	P	/	<1000	P
		PBDEs	P	/	<1000	P
130	Yellow adhesive tape	Cd	P	/	<100	P
		Cr(VI)	P	/	<1000	P
		Hg	P	/	<1000	P
		Pb	P	/	<1000	P
		PBBs	P	/	<1000	P
		PBDEs	P	/	<1000	P
131	CX1 yellow plastic cover	Cd	P	/	<100	P
		Cr(VI)	P	/	<1000	P
		Hg	P	/	<1000	P
		Pb	P	/	<1000	P
		PBBs	D	N.D.	<1000	P
		PBDEs	D	N.D.	<1000	P
132	Gray adhesive tape	Cd	P	/	<100	P
		Cr(VI)	P	/	<1000	P
		Hg	P	/	<1000	P
		Pb	P	/	<1000	P
		PBBs	P	/	<1000	P
		PBDEs	P	/	<1000	P



No.	COMPONENTS	Item	Results of EDXRF (P/F/D)	Results of Testing (mg/kg)	Chemical testing limit (mg/kg)	Conclusion (P/F)
133	Yellow packaging colloid	Cd	P	/	<100	P
		Cr(VI)	P	/	<1000	P
		Hg	P	/	<1000	P
		Pb	P	/	<1000	P
		PBBs	D	N.D.	<1000	P
		PBDEs	D	N.D.	<1000	P
134	Silvery metal pin	Cd	P	/	<100	P
		Cr(VI)	P	/	<1000	P
		Hg	P	/	<1000	P
		Pb	P	/	<1000	P
		PBBs	/	/	<1000	/
		PBDEs	/	/	<1000	/
135	Power supply wire black plastic outer jacket	Cd	P	/	<100	P
		Cr(VI)	P	/	<1000	P
		Hg	P	/	<1000	P
		Pb	P	/	<1000	P
		PBBs	P	/	<1000	P
		PBDEs	P	/	<1000	P
136	Brown plastic wire jacket	Cd	P	/	<100	P
		Cr(VI)	P	/	<1000	P
		Hg	P	/	<1000	P
		Pb	P	/	<1000	P
		PBBs	P	/	<1000	P
		PBDEs	P	/	<1000	P
137	Blue plastic wire jacket	Cd	P	/	<100	P
		Cr(VI)	P	/	<1000	P
		Hg	P	/	<1000	P
		Pb	P	/	<1000	P
		PBBs	P	/	<1000	P
		PBDEs	P	/	<1000	P
138	Yellow green plastic wire jacket	Cd	P	/	<100	P
		Cr(VI)	P	/	<1000	P
		Hg	P	/	<1000	P
		Pb	P	/	<1000	P
		PBBs	P	/	<1000	P
		PBDEs	P	/	<1000	P



No.	COMPONENTS	Item	Results of EDXRF (P/F/D)	Results of Testing (mg/kg)	Chemical testing limit (mg/kg)	Conclusion (P/F)
139	Coppery metal wire core	Cd	P	/	<100	P
		Cr(VI)	P	/	<1000	P
		Hg	P	/	<1000	P
		Pb	P	/	<1000	P
		PBBs	/	/	<1000	/
		PBDEs	/	/	<1000	/
140	Black plastic bundle	Cd	P	/	<100	P
		Cr(VI)	P	/	<1000	P
		Hg	P	/	<1000	P
		Pb	P	/	<1000	P
		PBBs	P	/	<1000	P
		PBDEs	P	/	<1000	P
141	Silvery metal wire core	Cd	P	/	<100	P
		Cr(VI)	P	/	<1000	P
		Hg	P	/	<1000	P
		Pb	P	/	<1000	P
		PBBs	/	/	<1000	/
		PBDEs	/	/	<1000	/
142	Black plastic plug bush	Cd	P	/	<100	P
		Cr(VI)	P	/	<1000	P
		Hg	P	/	<1000	P
		Pb	P	/	<1000	P
		PBBs	P	/	<1000	P
		PBDEs	P	/	<1000	P
143	Silvery metal contact pin	Cd	P	/	<100	P
		Cr(VI)	P	/	<1000	P
		Hg	P	/	<1000	P
		Pb	P	/	<1000	P
		PBBs	/	/	<1000	/
		PBDEs	/	/	<1000	/
144	Silvery metal cover	Cd	P	/	<100	P
		Cr(VI)	P	/	<1000	P
		Hg	P	/	<1000	P
		Pb	P	/	<1000	P
		PBBs	/	/	<1000	/
		PBDEs	/	/	<1000	/



No.	COMPONENTS	Item	Results of EDXRF (P/F/D)	Results of Testing (mg/kg)	Chemical testing limit (mg/kg)	Conclusion (P/F)
145	Black plastic framework	Cd	P	/	<100	P
		Cr(VI)	P	/	<1000	P
		Hg	P	/	<1000	P
		Pb	P	/	<1000	P
		PBBs	D	N.D.	<1000	P
		PBDEs	D	N.D.	<1000	P
146	Black plastic plug bush	Cd	P	/	<100	P
		Cr(VI)	P	/	<1000	P
		Hg	P	/	<1000	P
		Pb	P	/	<1000	P
		PBBs	P	/	<1000	P
		PBDEs	P	/	<1000	P
147	White plastic framework	Cd	P	/	<100	P
		Cr(VI)	P	/	<1000	P
		Hg	P	/	<1000	P
		Pb	P	/	<1000	P
		PBBs	D	N.D.	<1000	P
		PBDEs	D	N.D.	<1000	P
148	Coppery metal inner core	Cd	P	/	<100	P
		Cr(VI)	P	/	<1000	P
		Hg	P	/	<1000	P
		Pb	P	/	<1000	P
		PBBs	/	/	<1000	/
		PBDEs	/	/	<1000	/
149	Green plastic screw bush	Cd	P	/	<100	P
		Cr(VI)	P	/	<1000	P
		Hg	P	/	<1000	P
		Pb	P	/	<1000	P
		PBBs	P	/	<1000	P
		PBDEs	P	/	<1000	P
150	Silvery metal screw	Cd	P	/	<100	P
		Cr(VI)	P	/	<1000	P
		Hg	P	/	<1000	P
		Pb	P	/	<1000	P
		PBBs	/	/	<1000	/
		PBDEs	/	/	<1000	/



No.	COMPONENTS	Item	Results of EDXRF (P/F/D)	Results of Testing (mg/kg)	Chemical testing limit (mg/kg)	Conclusion (P/F)
151	Black metal screw	Cd	P	/	<100	P
		Cr(VI)	P	/	<1000	P
		Hg	P	/	<1000	P
		Pb	P	/	<1000	P
		PBBs	/	/	<1000	/
		PBDEs	/	/	<1000	/
152	Silvery metal screw	Cd	P	/	<100	P
		Cr(VI)	P	/	<1000	P
		Hg	P	/	<1000	P
		Pb	P	/	<1000	P
		PBBs	/	/	<1000	/
		PBDEs	/	/	<1000	/
153	Silvery metal washer	Cd	P	/	<100	P
		Cr(VI)	P	/	<1000	P
		Hg	P	/	<1000	P
		Pb	P	/	<1000	P
		PBBs	/	/	<1000	/
		PBDEs	/	/	<1000	/

Remark:

- (1) It is the result on total Br while test PBBs and PBDEs by EDXRF. It is the result on total Cr while test Hexavalent Chromium by EDXRF.
- (2) Results are obtained by EDXRF for primary screening, and chemical testing by ICP (for Cd, Pb, Hg), UV-VIS (Cr(VI)) and GCMS (for PBBs, PBDEs) is recommended to be performed, if the concentration exceeds the below warning value (unit:mg/kg)

Element	Polymer	Metal	Composite Materials
Cd	$P \leq 70-3\sigma < D < 130+3\sigma \leq F$	$P \leq 70-3\sigma < D < 130+3\sigma \leq F$	$P \leq 50-3\sigma < D < 150+3\sigma \leq F$
Pb	$P \leq 700-3\sigma < D < 1300+3\sigma \leq F$	$P \leq 700-3\sigma < D < 1300+3\sigma \leq F$	$P \leq 500-3\sigma < D < 1500+3\sigma \leq F$
Hg	$P \leq 700-3\sigma < D < 1300+3\sigma \leq F$	$P \leq 700-3\sigma < D < 1300+3\sigma \leq F$	$P \leq 500-3\sigma < D < 1500+3\sigma \leq F$
Br	$P \leq 300-3\sigma < D$	----	$P \leq 250-3\sigma < D$
Cr	$P \leq 700-3\sigma < D$	$P \leq 700-3\sigma < D$	$P \leq 500-3\sigma < D$

P = PASS; F = FAIL; D = DETECTED;

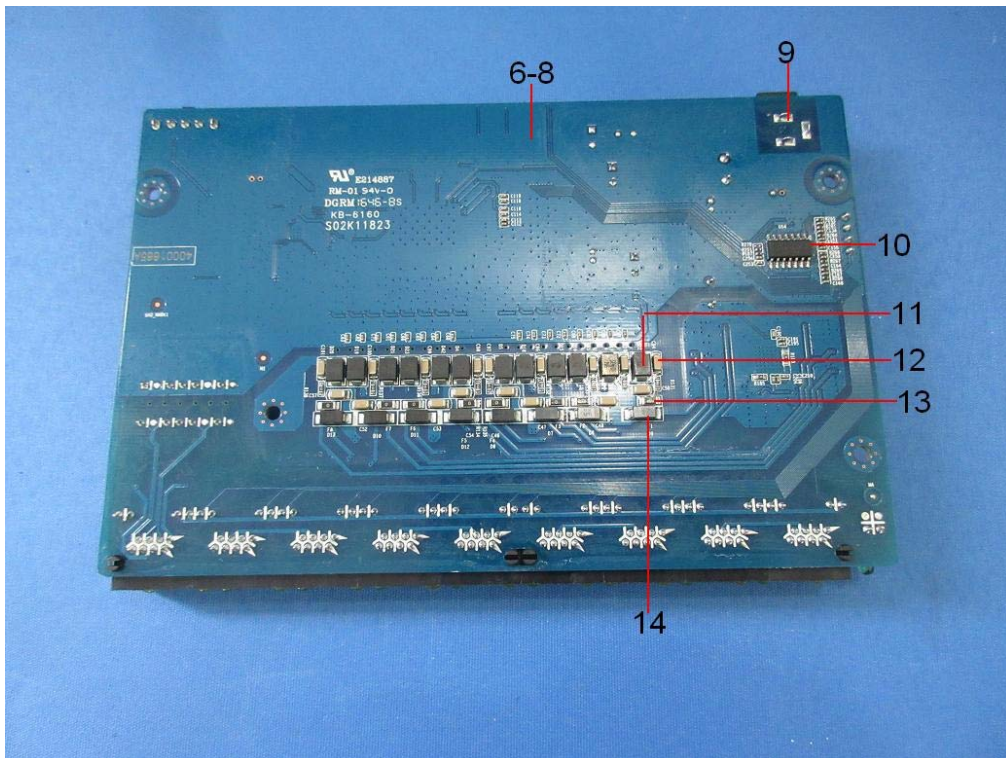
- (3) mg/kg = ppm; N.D. = NOT DETECTED (<MDL) Pb, Cd, Hg, Cr(VI): 2mg/kg; PBBs, PBDEs: 5mg/kg
- (4) According to IEC 62321-7-1:2015, result on Cr (VI) for metal sample is shown as Positive/Negative. Positive = Presence of Cr(VI) coating, Negative = Absence of Cr(VI) coating
- (5) # According to Annex III of European Council Directive 2011/65/EU, Electrical and electronic components containing lead in a glass or ceramic other than dielectric ceramic in capacitors, e.g. piezoelectric devices, or in a glass or ceramic matrix compound is exempted.

Sample photo

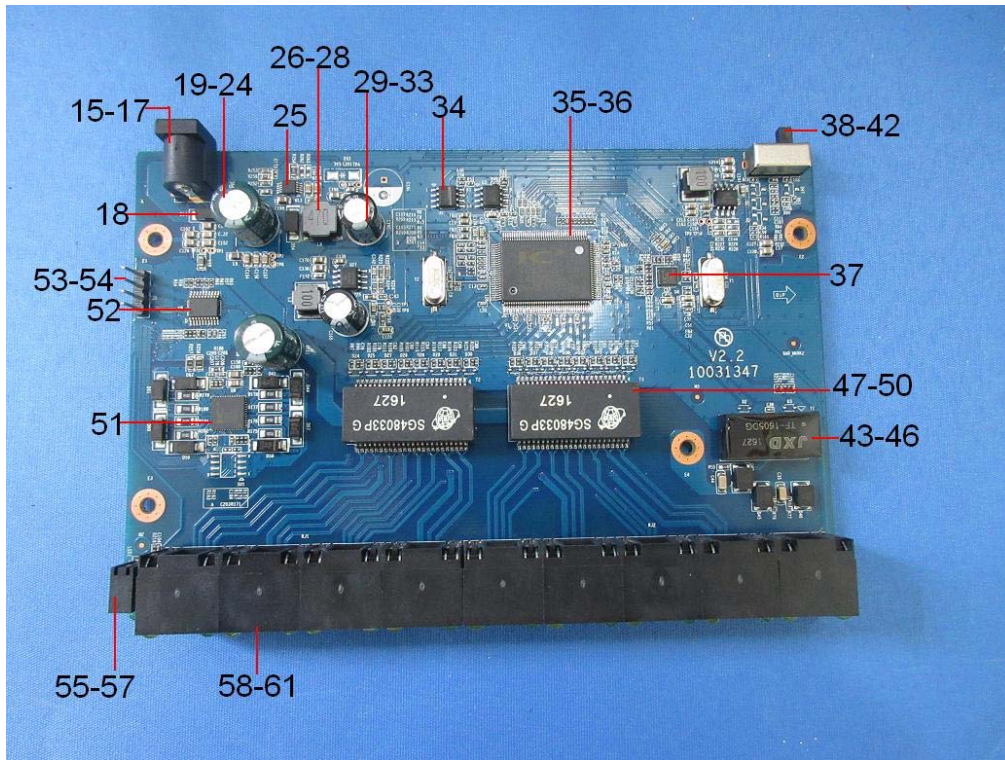


SET2017-09743

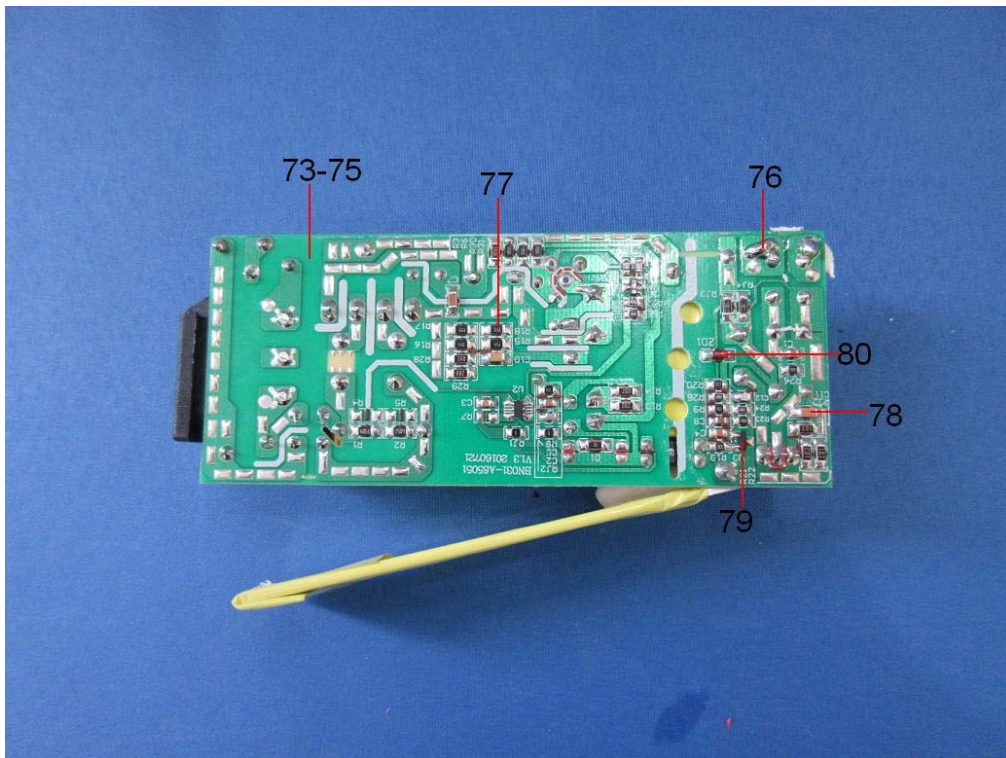
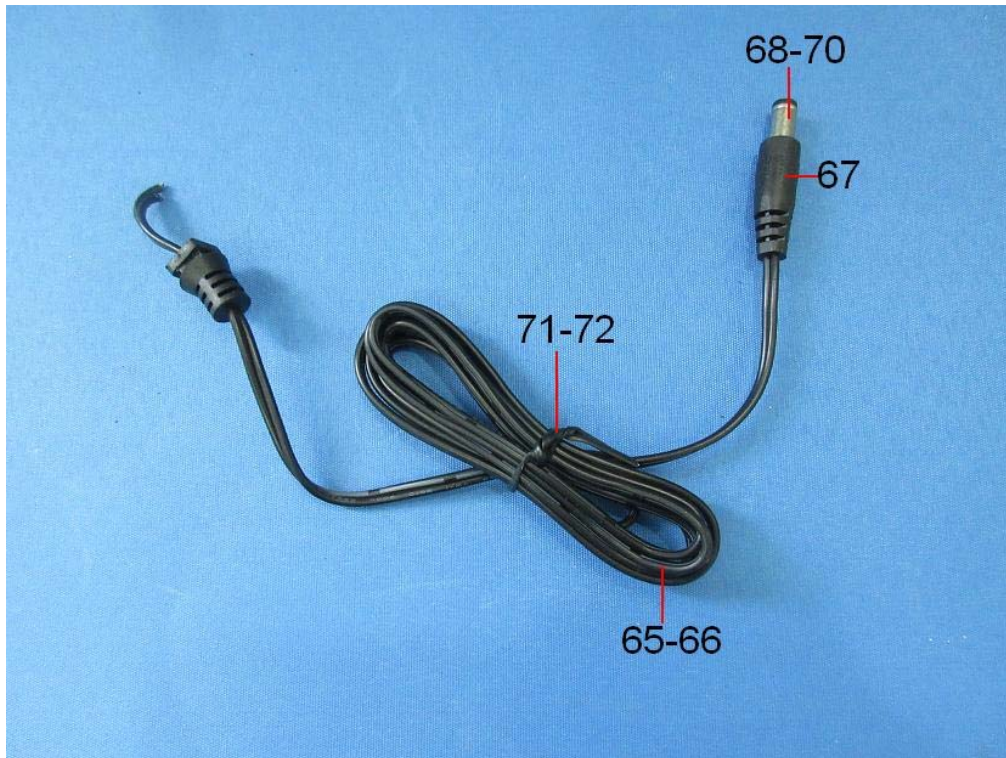
Detailed Split Chart



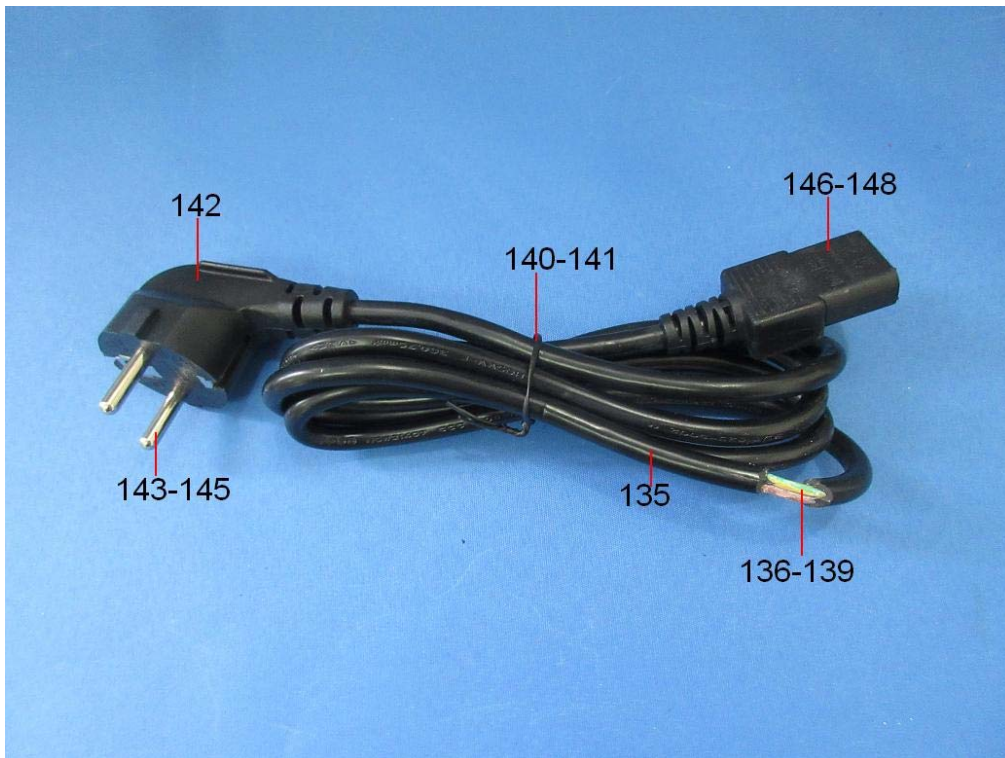
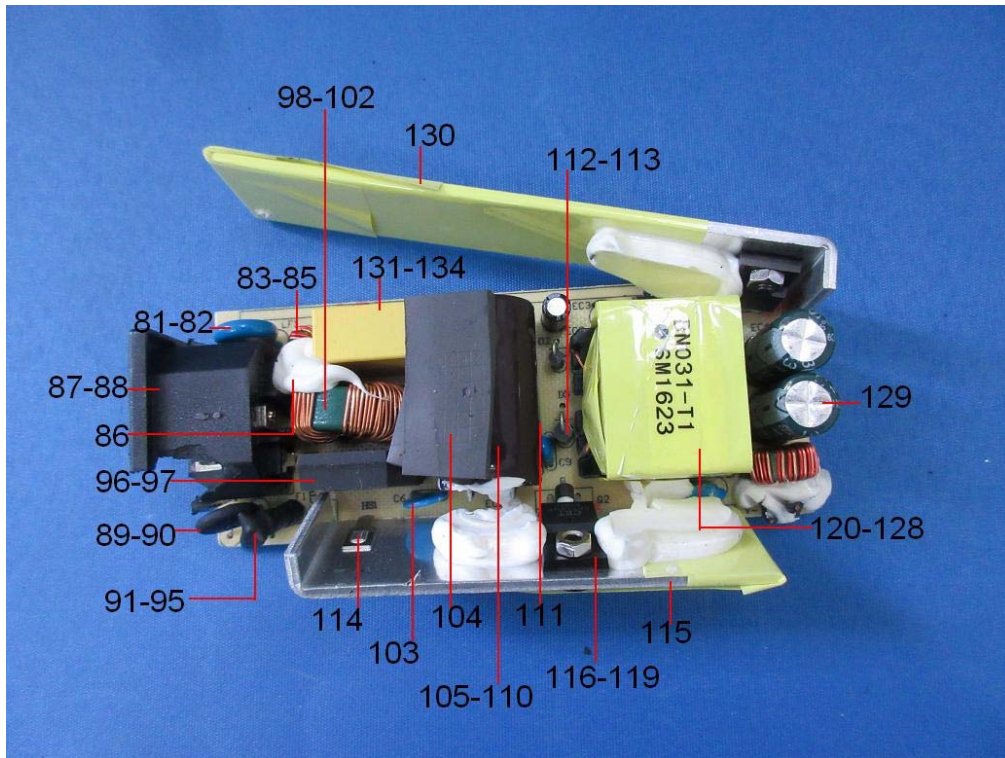
Detailed Split Chart



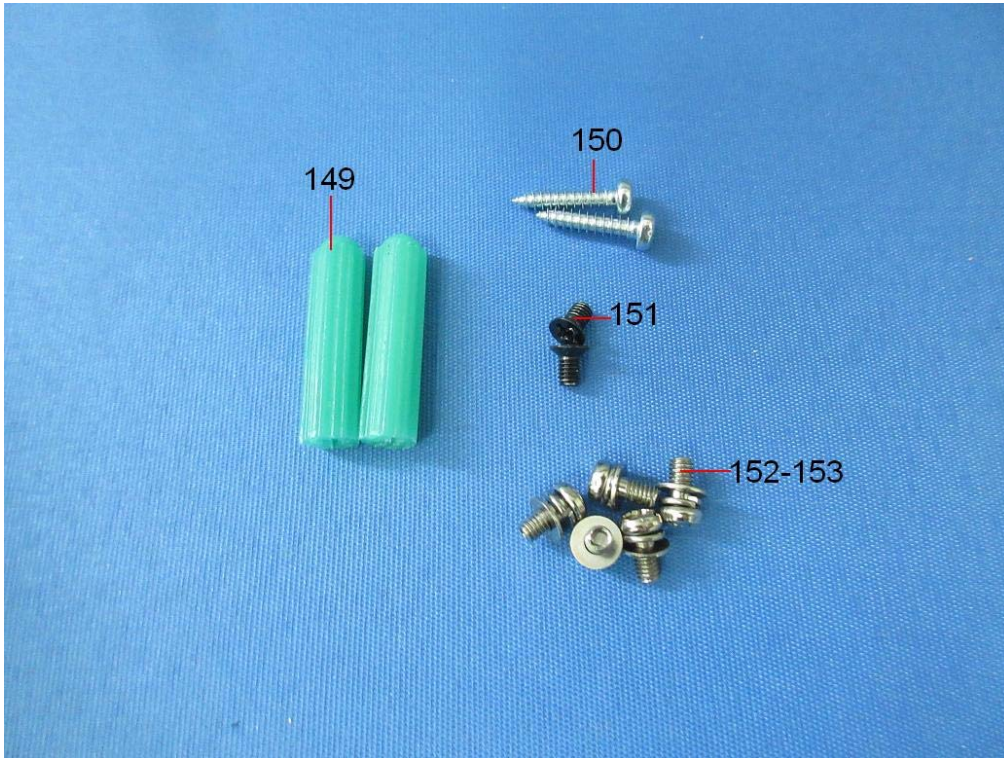
Detailed Split Chart



Detailed Split Chart



Detailed Split Chart





List of apparatus:

No.	Name	Model	Calibration Valid Date	USE(√)
1	ICP-OES	VISTA-MPX	2017/07/24	
2	GC-MS	5975i	2017/07/24	√
3	UV-Vis	Lambda 25	2018/04/22	√
4	XRF	EDX1800B	2018/04/25	√

***** END OF REPORT *****

STATEMENT

1. The test report is invalid without stamp of laboratory.
2. The test report is invalid without signature of person(s) testing and authorizing.
3. The test report is invalid if erased and corrected.
4. Test results of the report is valid to the test samples if sampling by client.
5. “☆” item to be outside the scope of authorized by CNAS.
6. The test report shall not be reproduced except in full, without written approval of the laboratory.
7. If there is any objection to report, the client should inform issuing laboratory within 15 days from the date of receiving test report.