



How to configure ring back tone on door station

Title:	How to configure ring back tone on door station	Version:	v1.0	Date:	2020/11/24
Product:	Video Intercom			Page:	1 of 3

Preparation

1. This guide takes

Type	Model	Version
Indoor station	DS-KH8520-WTE1	V2.2.3_2000713
Door station	DS-KV8413-WME1(B)	V2.2.3_200805

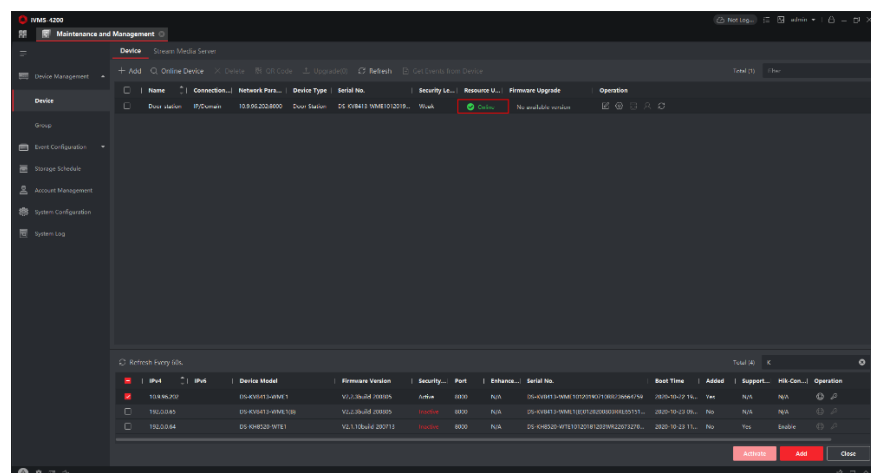
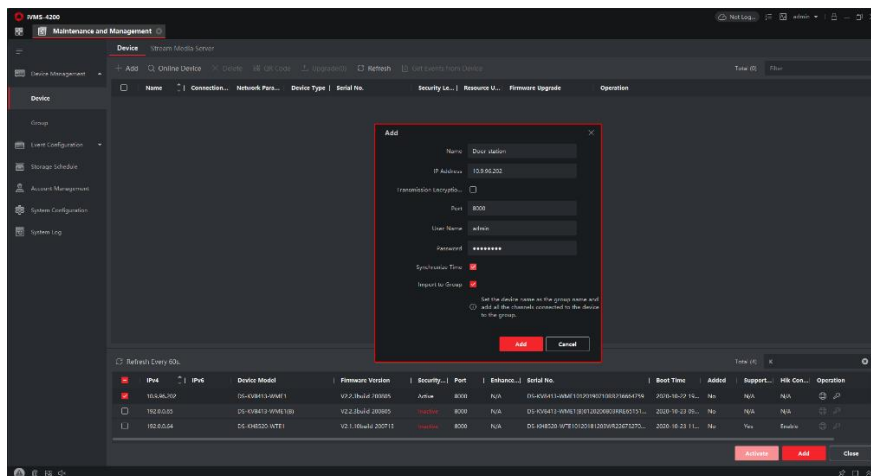
As examples to introduce configure ring back tone on door station

2. Software: iVMS-4200 Version 3.4.0.9

How to configure ring back tone on door station

1. Add Devices on iVMS-4200

- 1) Search for online devices and add the door station on iVMS-4200, enter username and password, and then confirm that the device is online.

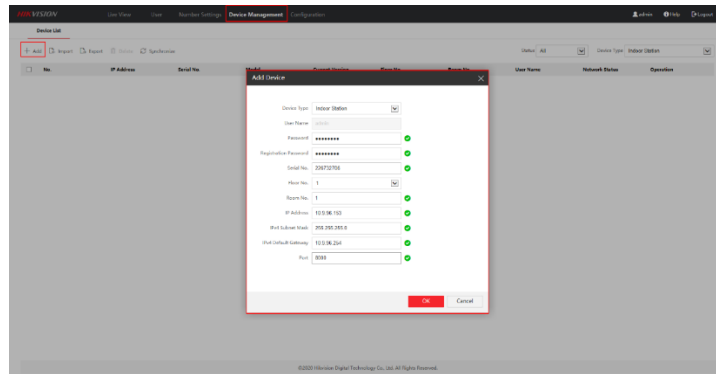


Title:	How to configure ring back tone on door station	Version:	v1.0	Date:	2020/11/24
Product:	Video Intercom			Page:	2 of 3

2. Add Indoor Station to Door Station

- 1) Then go to **Device Management** → **Add**, set the **Device Type** as Indoor Station, fill in the necessary info of the device.

Note: The **password** is the device's password, if the device is inactive, set a new password in this page. The **Registration Password** is the **same** as what is set on Door Station before. The **Port** is 8000.

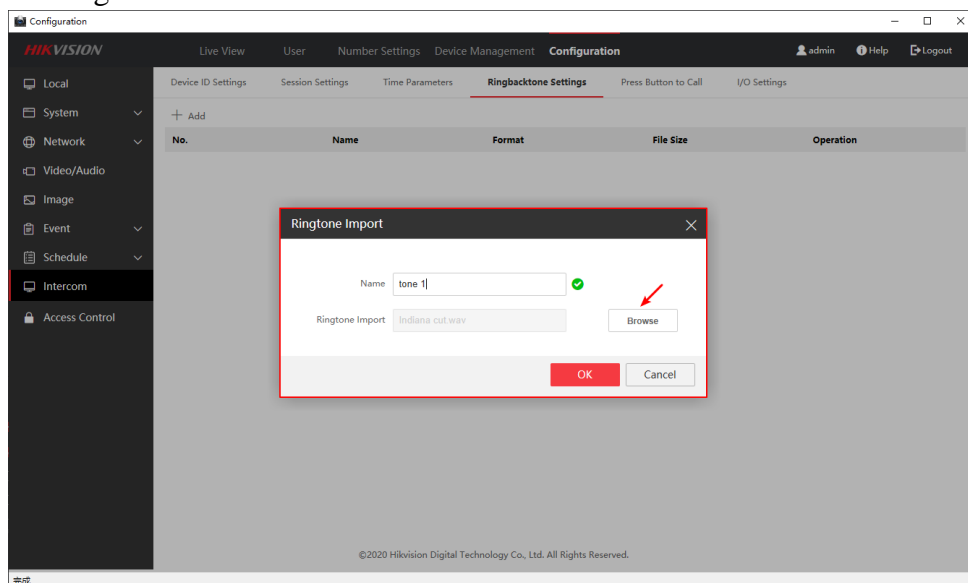


- 2) After we complete the device info, wait 5 to 10 minutes, you will see the page as shown below and the devices will be online

No.	IP Address	Serial No.	Model	Current Version	Floor No.	Room No.	User Name	Network Status	Operation
1	10.9.96.152	226732706	DS-KH8520-WTE1	V2.1.10 build 200713	1	1	admin	Online	

3. Configure the ring back tone on the Door Station

- 1) Then go to **Configuration** → **Intercom** → **Ring back tone Settings**, upload the ringtone file.

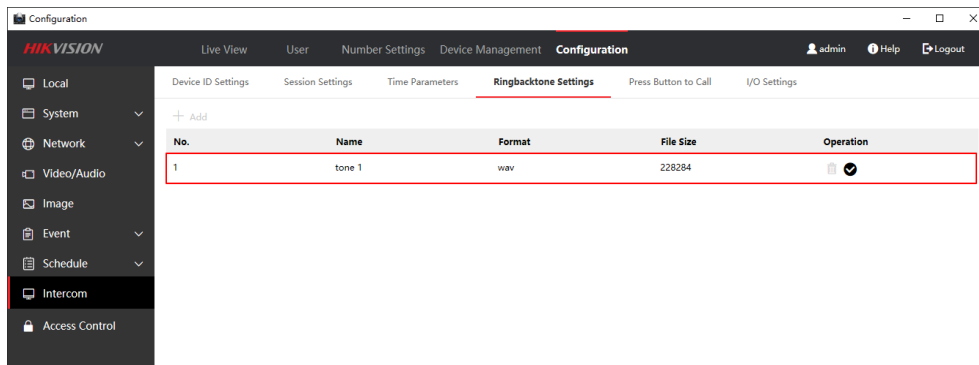
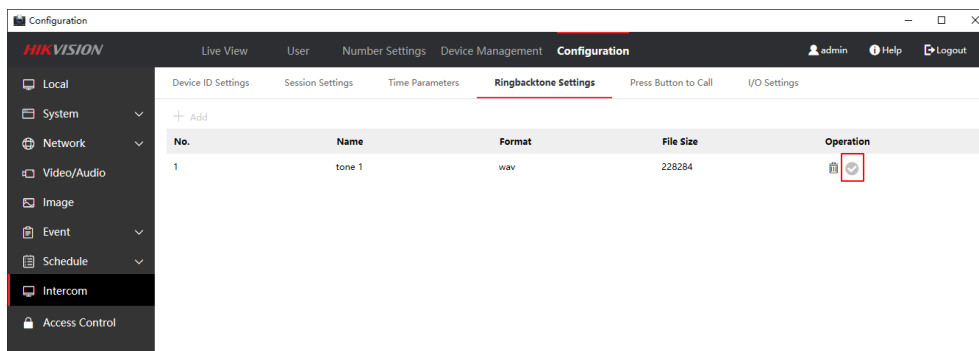


Title:	How to configure ring back tone on door station	Version:	v1.0	Date:	2020/11/24
Product:	Video Intercom	Page:	3 of 3		

Note: The uploaded audio file needs to **meet the following conditions:**

- 1) Format: .wav;
- 2) Capacity: ≤300K;
- 3) Sampling rate: 8 KHz;
- 4) Mono;
- 5) 128Kbps

- 2) After uploading the audio file successfully, click the icon (circled in the image below) to enable the ring back tone. Then you can hear it during the waiting time when you call from the door station to indoor station.





See Far, Go Further