



**How to add a single indoor station to  
the door station** (Through the door station interface)

<b>Title:</b>	How to add a single indoor station to the door station	<b>Version:</b>	v1.0	<b>Date:</b>	2020/11/24
<b>Product:</b>	Video Intercom	<b>Page:</b>	1 of 3		

## Preparation

1. This guide takes

Type	Model	Version
Indoor station	DS-KH8520-WTE1	V2.1.10_200713
Door station	DS-KV8413-WME1(B)	V2.2.3_200805

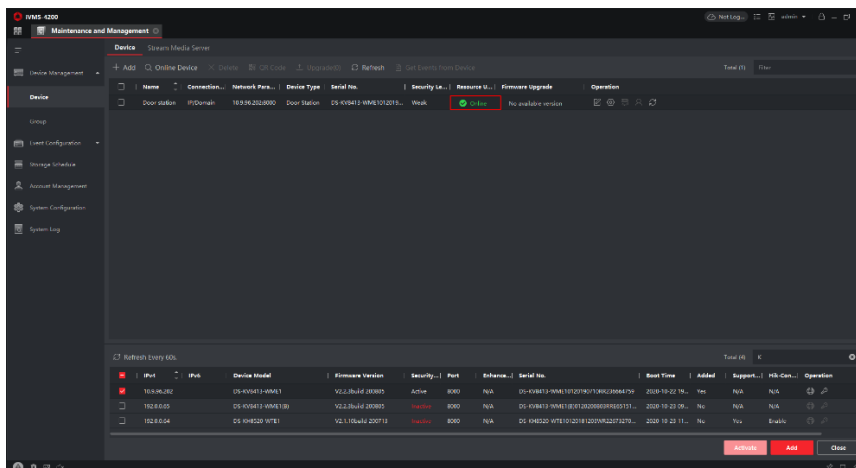
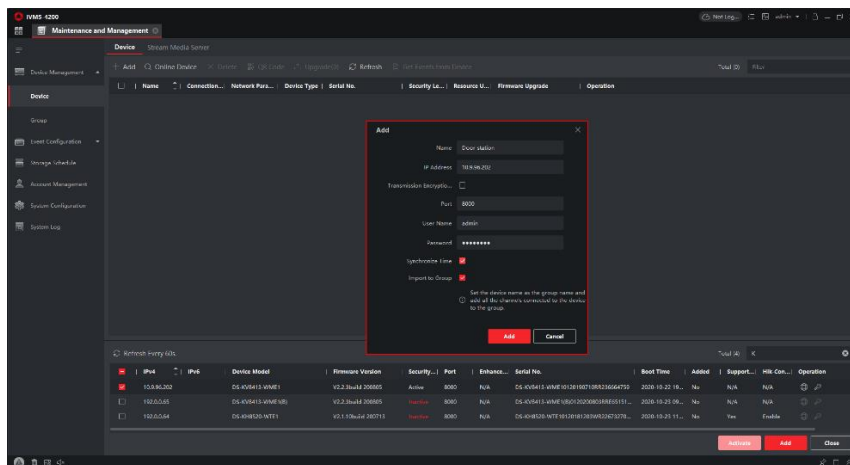
As examples to introduce register indoor station to door station.

2. Software: iVMS-4200 Version 3.4.0.9

## How to add a single indoor station to the door station (Through the door station interface)

### 1. Add Devices on iVMS-4200

- 1) Search for online devices and add the door station on iVMS-4200, enter username and password, and then confirm that the device is online.



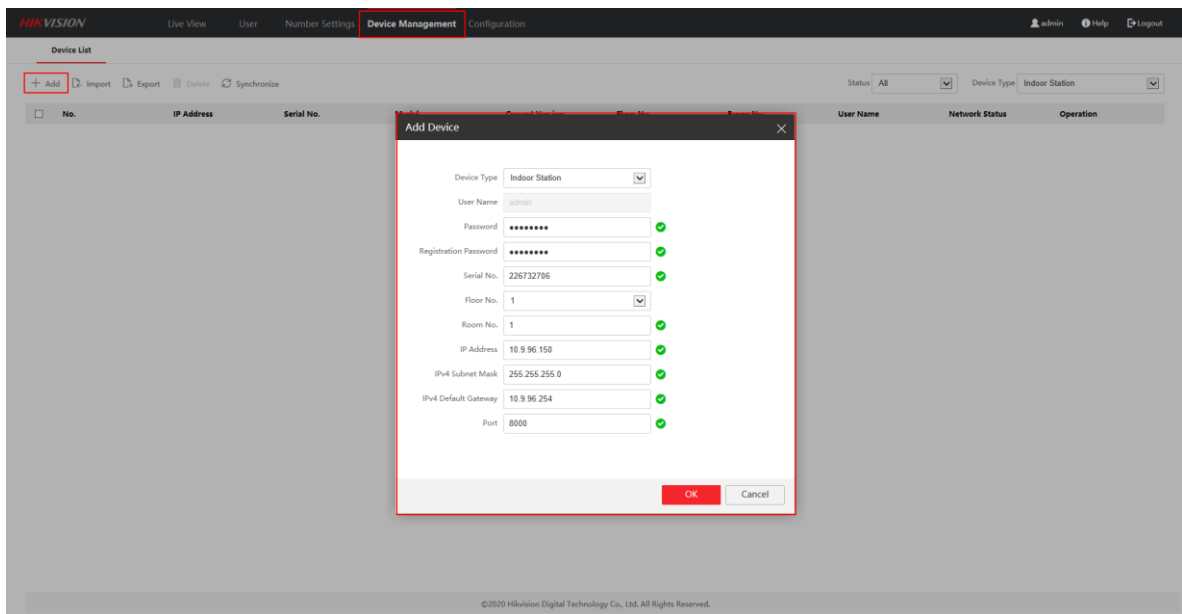
<b>Title:</b>	How to add a single indoor station to the door station	<b>Version:</b>	v1.0	<b>Date:</b>	2020/11/24
<b>Product:</b>	Video Intercom			<b>Page:</b>	2 of 2

## 2. Register Indoor Station to Door station on Door Station Remote

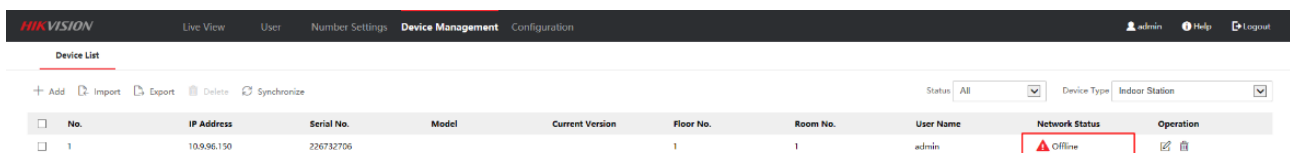
### Configuration interface

1) Then go to **Device Management** → **Add**, set the **Device Type** as Indoor Station, fill in the necessary info of the device.

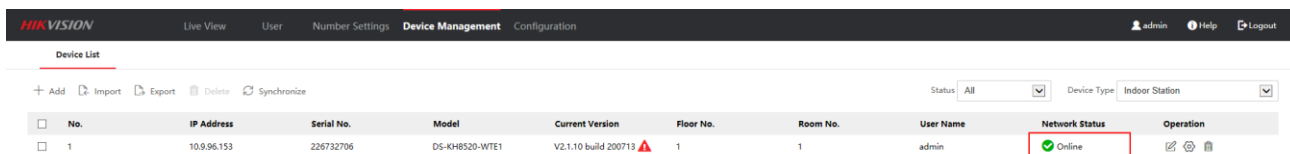
**Note:** The **password** is the device's password, if the device is inactive, set a new password in this page. The **registration password** is the password that must be configured for the activated device. When the door station adds an activated indoor station, the registration password of the indoor station must be known. The inactive indoor station registration password can be directly assigned by door station. You can set one at will. The **Port** is 8000.



2) After we complete the device info, you will see the page as shown below.



3) Wait 5 to 10 minutes, and the devices will be online.



<b>Title:</b>	How to add a single indoor station to the door station	<b>Version:</b>	v1.0	<b>Date:</b>	2020/11/24
<b>Product:</b>	Video Intercom			<b>Page:</b>	3 of 2

---



See Far, Go Further