



## **How to add IP camera to the indoor station**

**(Through the indoor station iVMS-4200 interface)**

<b>Title:</b>	How to add IP camera to the indoor station	<b>Version:</b>	v1.0	<b>Date:</b>	2020/11/24
<b>Product:</b>	Video Intercom	<b>Page:</b>	1 of 3		

## Preparation

### 1. This guide takes

Type	Model	Version
Indoor station	DS-KH8520-WTE1	V2.1.10_200713
IPC	2CD2763G1-IZS	V5.6.5_200316

As examples to introduce register IPC to indoor station.

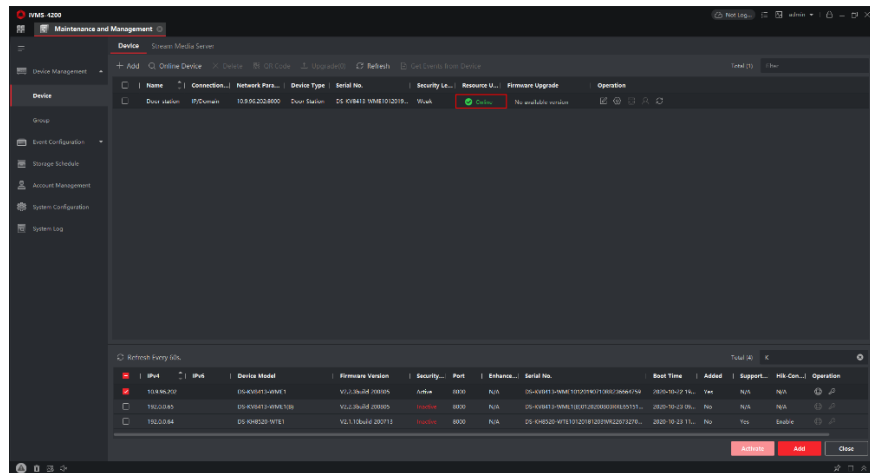
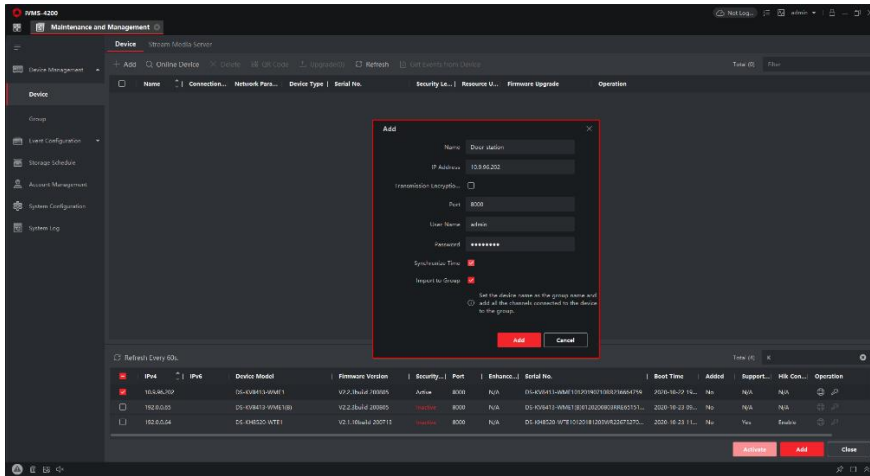
### 2. Software: iVMS-4200 Version 3.4.0.9

## How to add IP camera to the indoor station

(Through the indoor station iVMS-4200 interface)

### 1. Add Devices on iVMS-4200

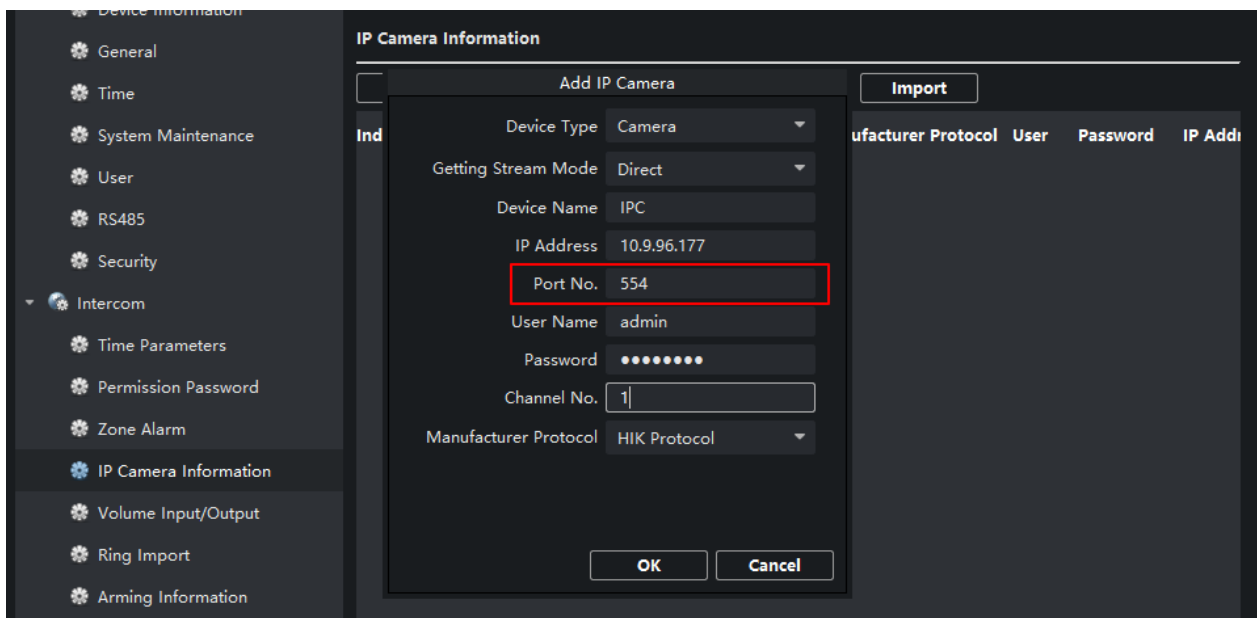
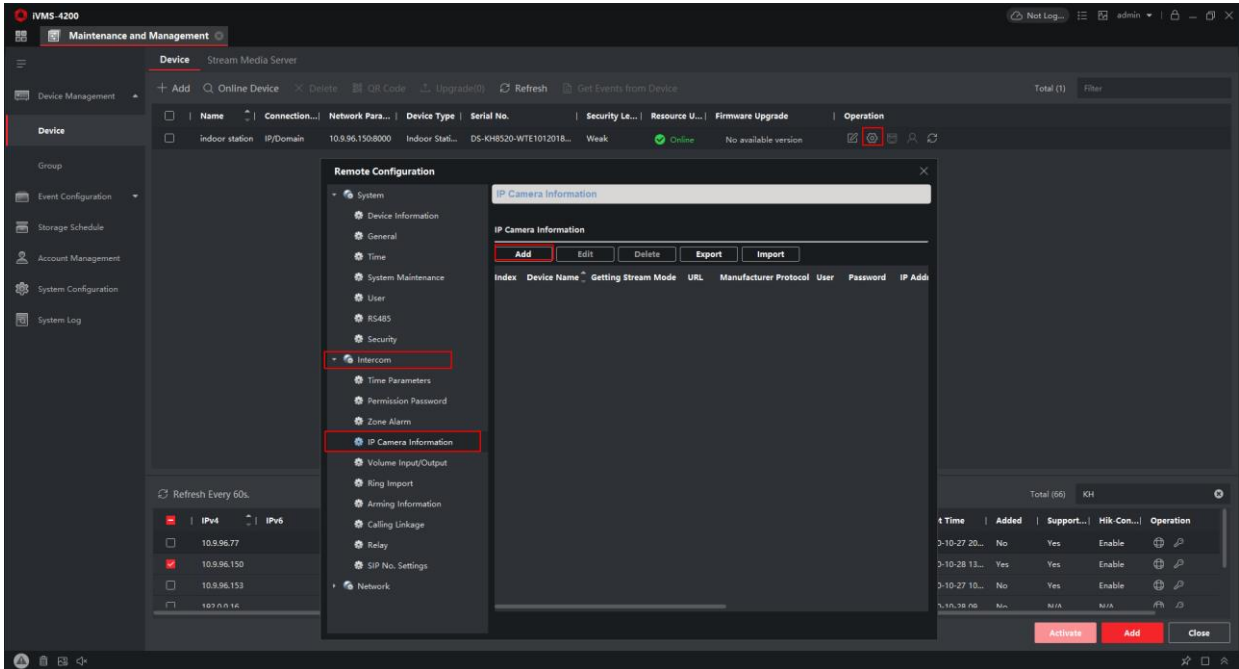
- 1) Search for online devices and add the door station on iVMS-4200, enter username and password, and then confirm that the device is online.



<b>Title:</b>	How to add IP camera to the indoor station	<b>Version:</b>	v1.0	<b>Date:</b>	2020/11/24
<b>Product:</b>	Video Intercom			<b>Page:</b>	2 of 3

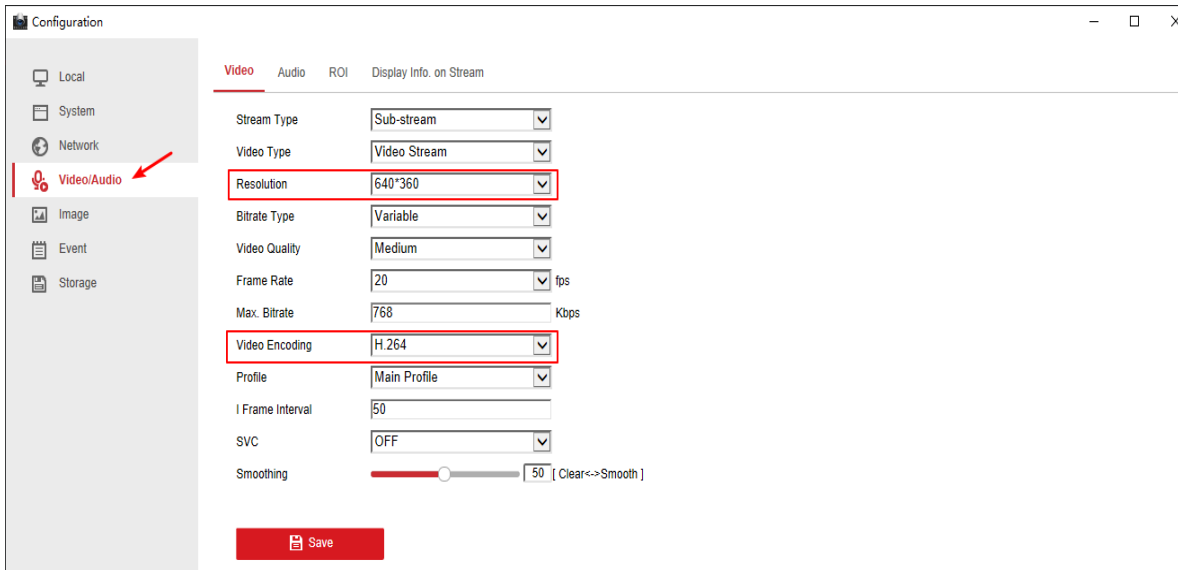
## 2. Add IP Camera to Indoor Station

- 1) Choose the **Indoor Station** → **Remote Configuration**, then go to **Intercom** → **IP Camera Information**, add the camera's Device Name, IP Address. Set **Port** as **554**, Channel No as 1. Set **Manufacturer Protocol** as HIK Protocol. Input user name, password and save.

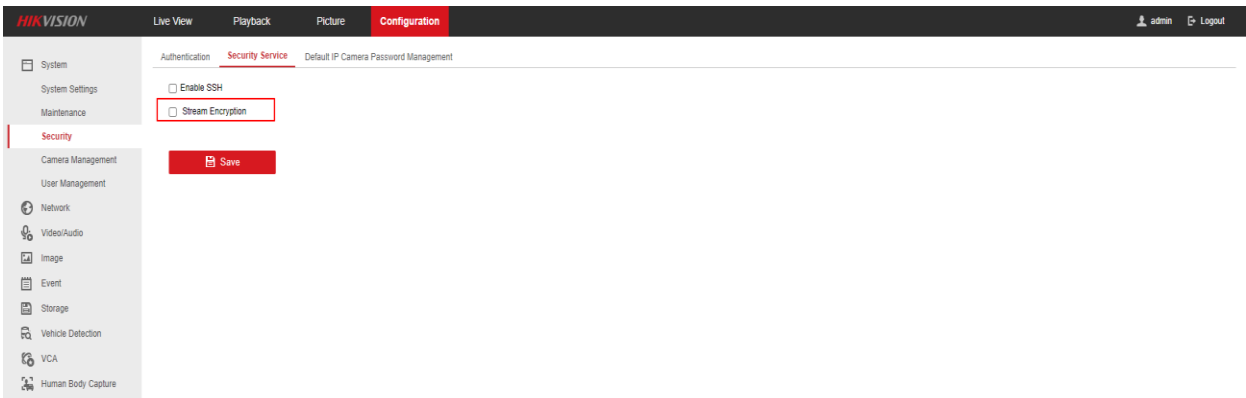


<b>Title:</b>	How to add IP camera to the indoor station	<b>Version:</b>	v1.0	<b>Date:</b>	2020/11/24
<b>Product:</b>	Video Intercom	<b>Page:</b>	3 of 3		

**Note:** The resolution of the IP camera should less than or equal to **1280\*720 resolutions**, the decoding type should be **H.264**.

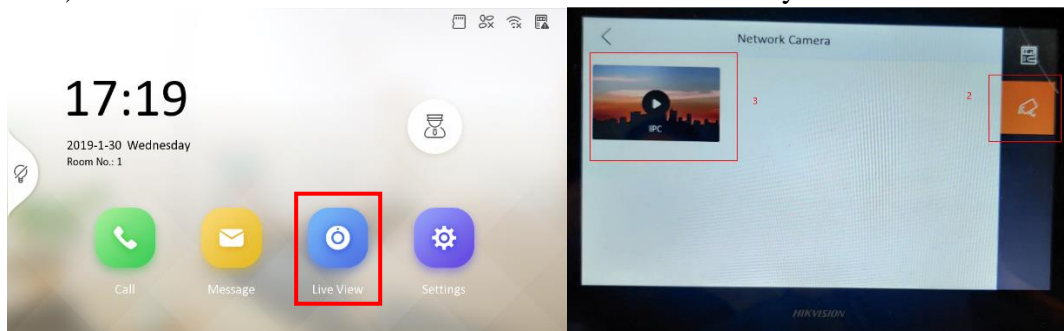


**Note:** You can access NVR channel by filling the corresponding channel number in Channel NO and **disable** the Stream Encryption function due to the video intercom architecture doesn't support it.



### 3. Watch the Live View on Indoor Station

- 1) Choose **Live View**→**Network Camera**→**IPC**, then you can watch the live view.





See Far, Go Further