

<b>Title:</b>	How to Create Multiple Master Stations Redundancy	<b>Version:</b>	v1.0	<b>Date:</b>	10/24/2018
<b>Product:</b>	Video Intercom			<b>Page:</b>	1 of 4

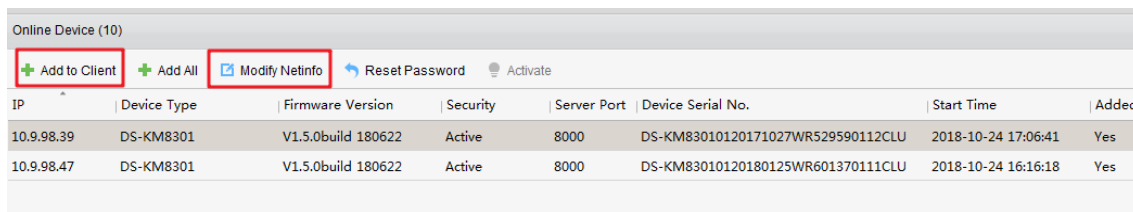
## Preparation

1. Two or more master stations (DS-KM8301), firmware version: baseline V1.5.0 or above.
2. Client software iVMS-4200: baseline V2.7.2.7 or above

## How to Create Multiple Master Stations Redundancy

### Step 1: Add Devices to iVMS-4200

Click **Add to Client** tab to add all devices to iVMS-4200, make sure all devices are in the same local network with computer, if not, click **Modify Netinfo** to modify it.

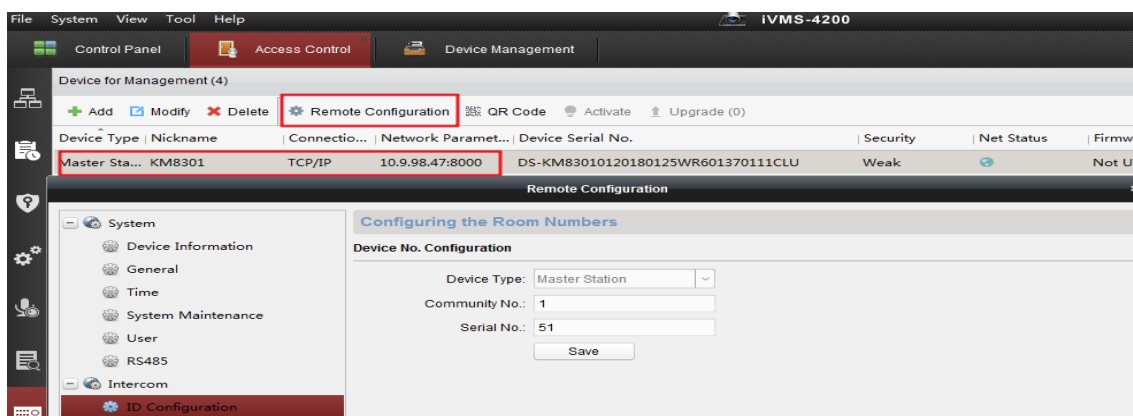


The screenshot shows the 'Online Device (10)' interface. At the top, there are buttons: '+ Add to Client', '+ Add All', 'Modify Netinfo', 'Reset Password', and 'Activate'. Below these is a table with columns: IP, Device Type, Firmware Version, Security, Server Port, Device Serial No., Start Time, and Added. Two devices are listed:

IP	Device Type	Firmware Version	Security	Server Port	Device Serial No.	Start Time	Added
10.9.98.39	DS-KM8301	V1.5.0build 180622	Active	8000	DS-KM83010120171027WR529590112CLU	2018-10-24 17:06:41	Yes
10.9.98.47	DS-KM8301	V1.5.0build 180622	Active	8000	DS-KM83010120180125WR601370111CLU	2018-10-24 16:16:18	Yes

### Step 2: Set Main Master Station

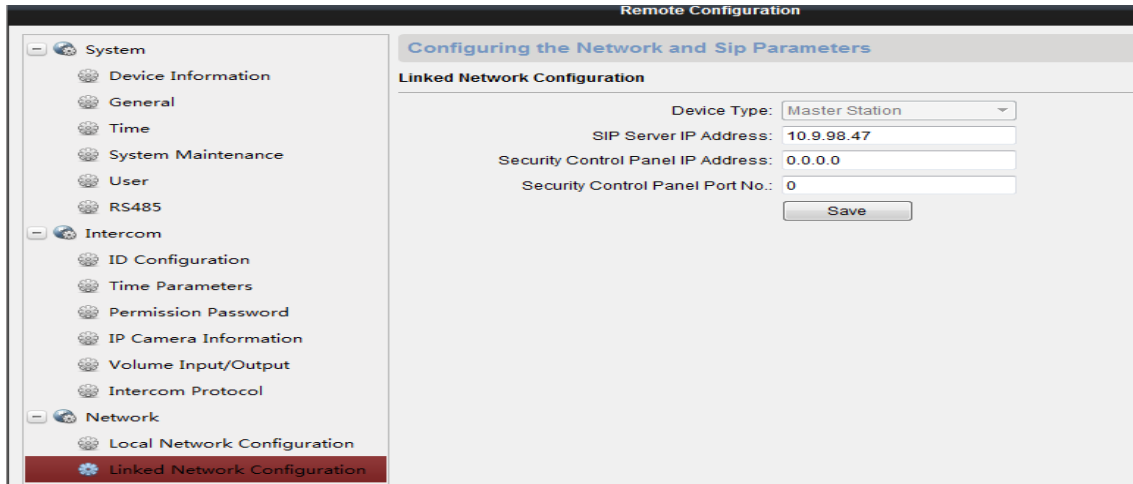
- 1) Choose one of the master stations as main master station, go to **Remote Configuration-> Intercom -> ID Configuration**, Check **Serial No.** is in default 51.



- 2) Go to **Network -> Linked Network Configuration**, input **SIP Server IP Address** as this master station's own IP address, click **Save**.

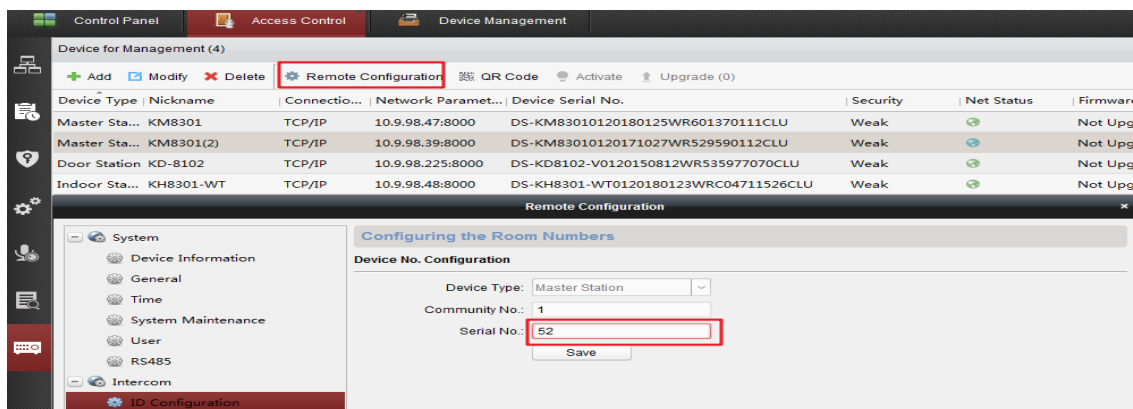
This step will let main masterstation to register on its own build-in SIP server.

Title:	How to Create Multiple Master Stations Redundancy	Version:	v1.0	Date:	10/24/2018
Product:	Video Intercom			Page:	2 of 4



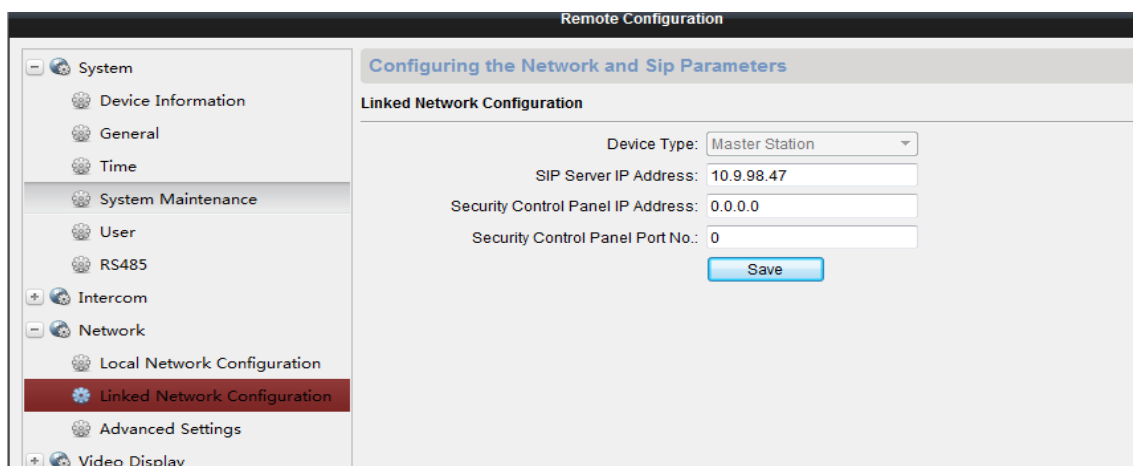
### Step 3: Set Redundancy Master Stations

- 1) Choose another master station as the first redundancy master station, go to: **Remote Configuration** > **Intercom** -> **ID Configuration**, Set serial No. as 52.(Redundancy masterstation No. range :52-99)



- 2) Go to **Network** > **Linked Network Configuration**, input **SIP Server IP Address** as the main master station's IP address, click **Save**.

This step will let redundancy master station to register on main master station. Then multiple master stations redundancy setting is finished. Other redundancy master stations can be set in the same way.



<b>Title:</b>	How to Create Multiple Master Stations Redundancy	<b>Version:</b>	v1.0	<b>Date:</b>	10/24/2018
<b>Product:</b>	Video Intercom			<b>Page:</b>	3 of 4

## Instructions:

With multiple master stations redundancy, we can achieve following functions:

- 1) When main master station is busy, the following call will automatically forward to first redundancy master station, and if first redundancy station is also busy, it will forward to second...and so on
- 2) Multiple master station can call each other using format: Community No.-Serial No. (such as : 1-51)  
If master stations are in same Community No. , you can only use Serial No. to call each other (51, 52, 53, 54...)

<b>Title:</b>	How to Create Multiple Master Stations Redundancy	<b>Version:</b>	v1.0	<b>Date:</b>	10/24/2018
<b>Product:</b>	Video Intercom			<b>Page:</b>	4 of 4

**First Choice for Security Professionals**  
**HIKVISION Technical Support**