

Title:	How to Connect a Door Station in Doorphone Mode to Indoor Station	Version:	v1.0	Date:	8/21/2018
Product:	Video Intercom			Page:	1 of 6

Preparation

1. This guide is based on the V1.5.0 firmware. It takes three door stations (DS-KD8102 & DS-KV8102), one indoor station (DS-KH8301) as examples to introduce how to connect a door station in door phone mode to indoor station.
2. You are required to connect door station and indoor station, and make sure that door station can call indoor station normally before set doorphone mode.

How to Connect a Door Station in Doorphone Mode to Indoor Station

Step 1: Add Devices to iVMS-4200

- 1) Go to **Device Management-> Add to Client** to add all devices to iVMS-4200 software.

The screenshot shows the iVMS-4200 software interface. The top menu bar includes File, System, View, Tool, and Help. The main window is titled 'iVMS-4200' and shows the 'Device Management' section. On the left, there is a sidebar with 'Device Type' and 'Group' tabs. Under 'Device Type', 'Hikvision Device' is selected and highlighted in red. The main area displays a table titled 'Device for Management (4)' with columns for Device Type, Nickname, Connection, Network Parameters, Device Serial No., and Security. The table contains four rows of device information, all of which are highlighted with a red border:

Device Type	Nickname	Connectio...	Network Paramet...	Device Serial No.	Securit
Indoor Sta...	KH8301	TCP/IP	10.9.98.32:8000	DS-KH8301-WT0120180123WRC04711526CLU	Weak
Door Station	KD8102	TCP/IP	10.9.98.77:8000	DS-KD8102-V0120151007WR546551256CLU	Weak
Door Station	KV8102IM	TCP/IP	10.9.98.80:8000	DS-KV8102-IM0120151008WR547007709CLU	Weak
Door Station	KV8102VP	TCP/IP	10.9.98.117:8000	DS-KV8102-VP0120150717WR531268797CLU	Weak

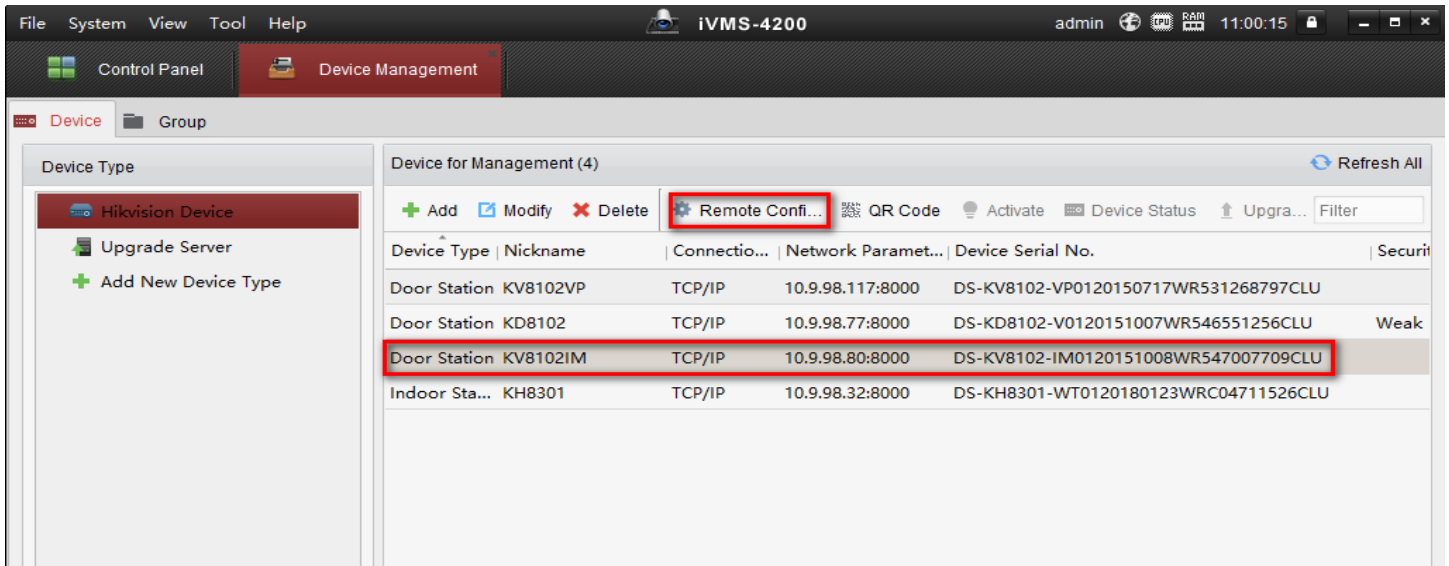
Title:	How to Connect a Door Station in Doorphone Mode to Indoor Station	Version:	v1.0	Date:	8/21/2018
Product:	Video Intercom			Page:	2 of 6

- 2) Check all devices in same firmware version V1.5.0 , if not please update device firmware and reset to factory settings from remote configuration first.



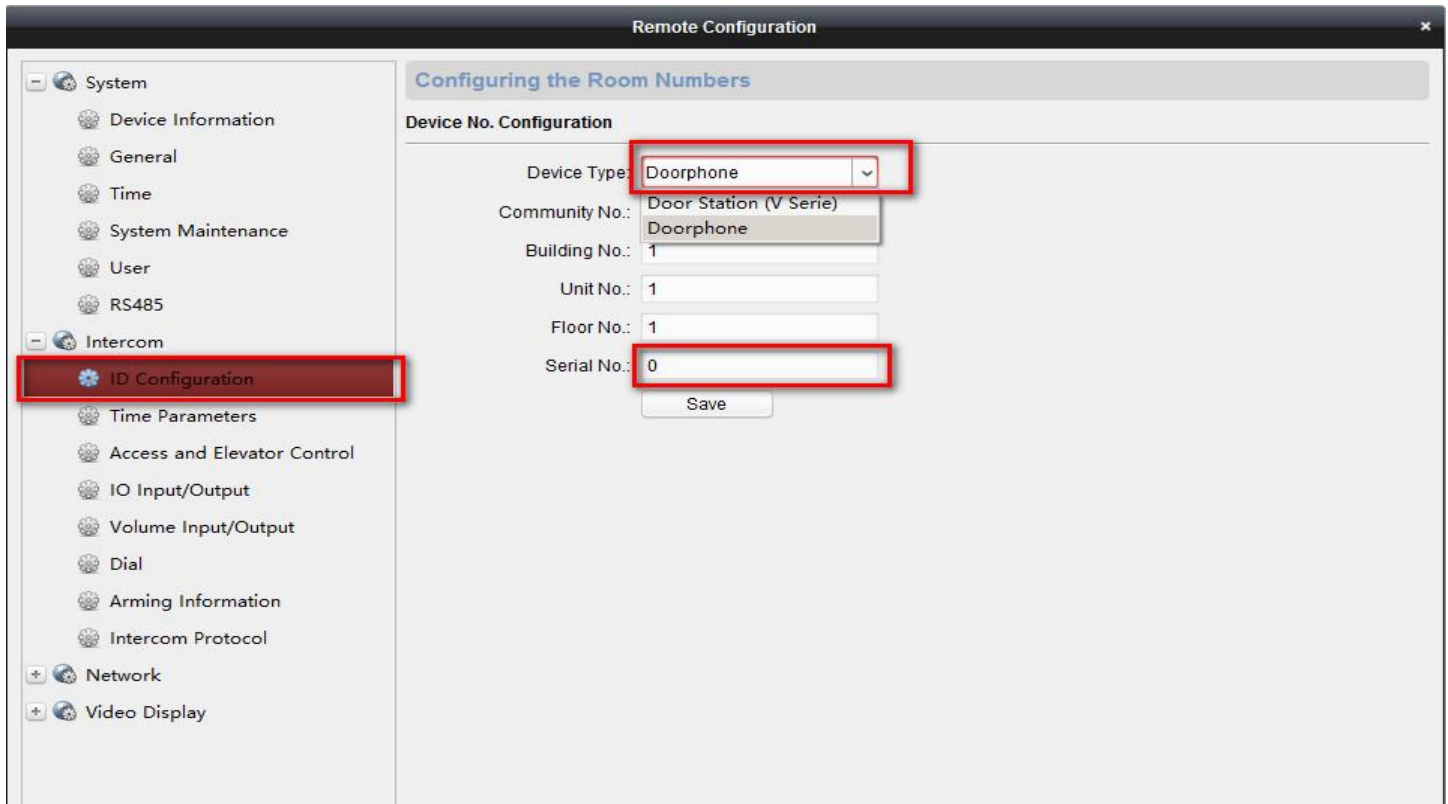
Step 2: Set Doorphone Mode

- 1) Choose door station DS-KV8102IM, enter device remote configuration of door station.



Title:	How to Connect a Door Station in Doorphone Mode to Indoor Station	Version:	v1.0	Date:	8/21/2018
Product:	Video Intercom			Page:	3 of 6

- 2) Go to **Intercom-> ID Configuration**, modify device type to Doorphone mode. Door Station to Doorphone will cause device reboot.

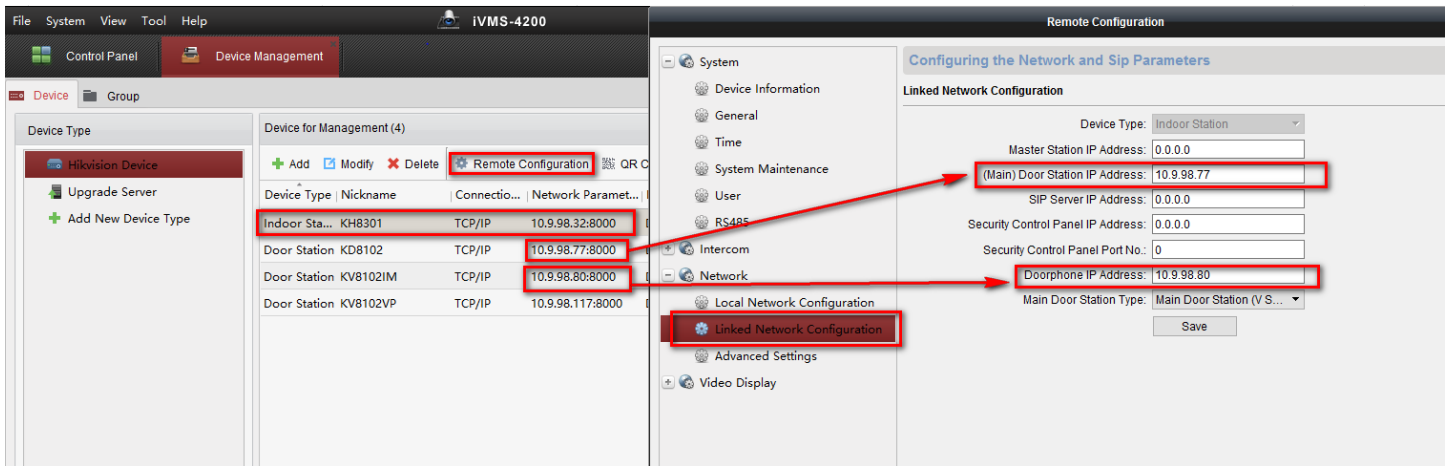


Note:

Serial No. ranges from 0~8. 0 represents doorphone while 1~8 represents sub doorphone.

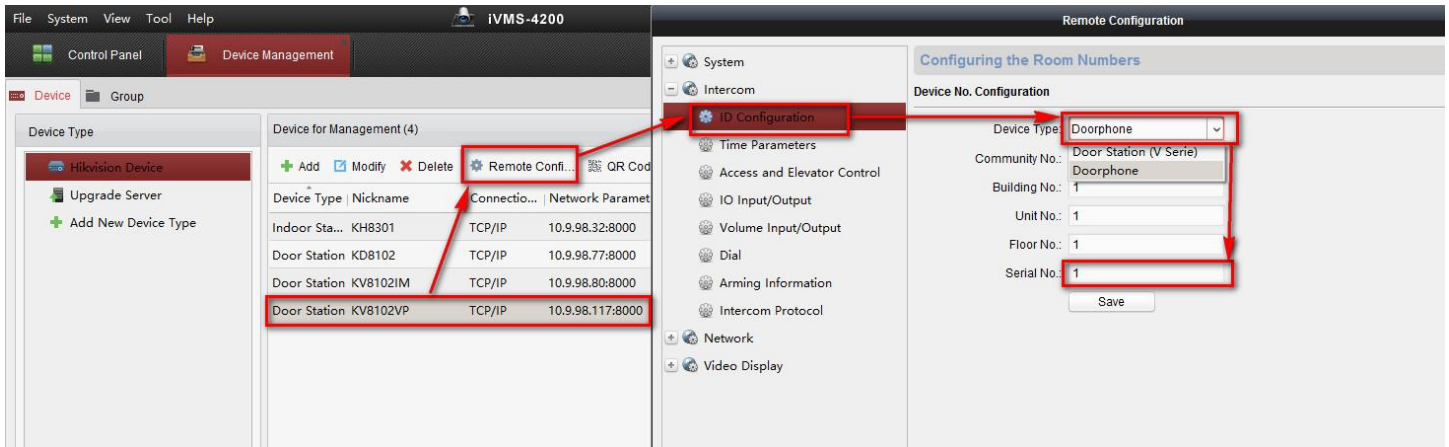
- 3) After device reboot, please select indoor station KH8301, go to **Remote Configuration-> Network-> Linked Network Configuration**, input door station (KD8102) IP address, doorphone (KV8102IM) IP address and click save.

Title:	How to Connect a Door Station in Doorphone Mode to Indoor Station	Version:	v1.0	Date:	8/21/2018
Product:	Video Intercom			Page:	4 of 6



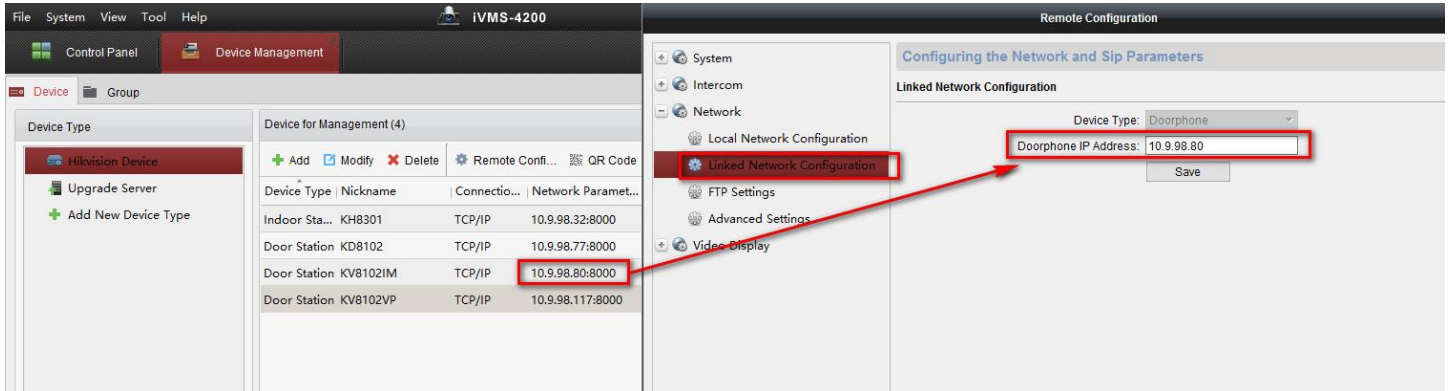
Step 4: Set sub Doorphone.

- 1) Select door station DS-KV8102VP, enter device **Remote Configuration** of door station.
- 2) Go to **Intercom-> ID Configuration**, modify device type to Doorphone mode. Set a **Serial No.** (range from 1~8). Door Station to sub Doorphone will cause device reboot.



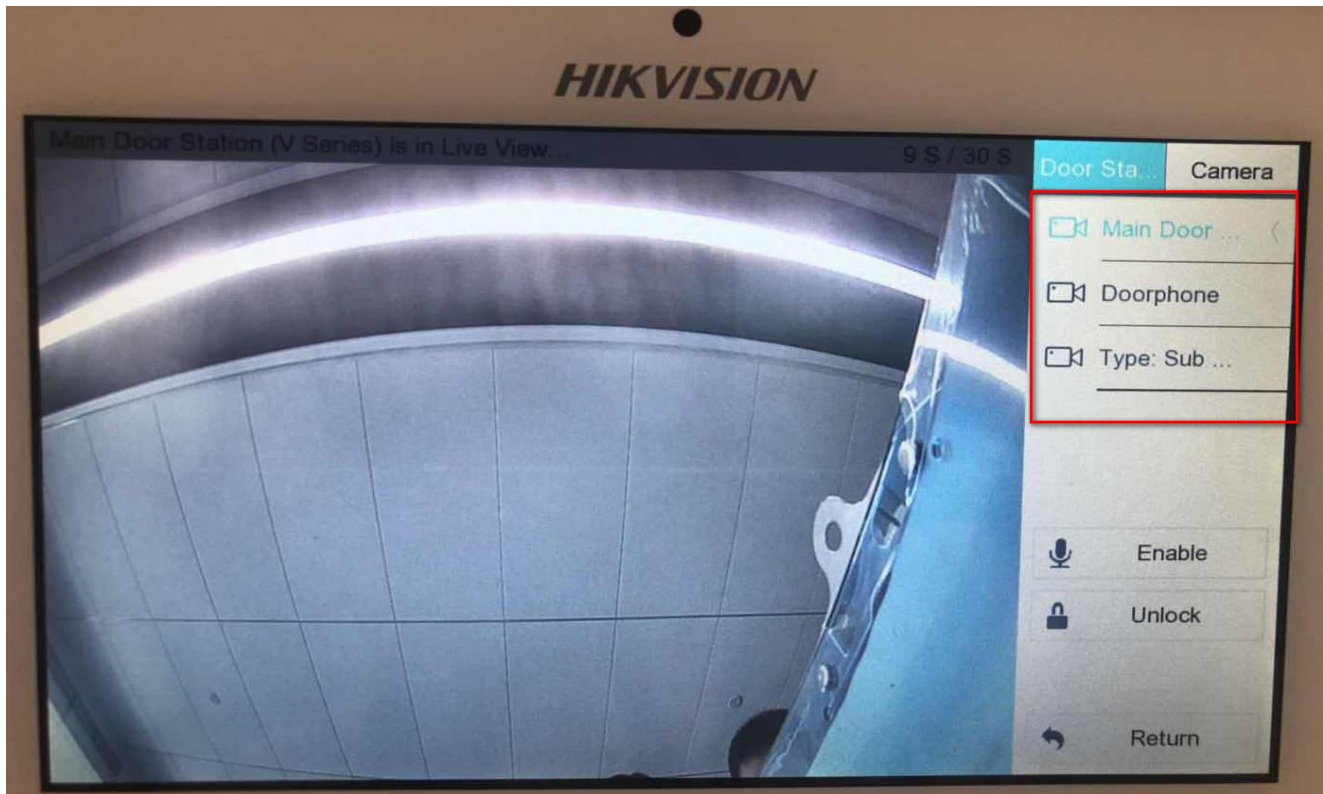
Title:	How to Connect a Door Station in Doorphone Mode to Indoor Station	Version:	v1.0	Date:	8/21/2018
Product:	Video Intercom			Page:	5 of 6

- 3) After device reboot, select sub doorphone (KV8102VP) , go to **Remote Configuration-> Network-> Linked Network Configuration**, input doorphone (KV8102IM) IP address and click save.



Step 5: Make a Call Using Doorphone

Press the call button on doorphone or sub doorphone, then the indoor station will receive the call. Check live view from indoor station local, we can find main door station, doorphone and sub doorphone image.





Title:	How to Connect a Door Station in Doorphone Mode to Indoor Station	Version:	v1.0	Date:	8/21/2018
Product:	Video Intercom			Page:	6 of 6

First Choice for Security Professionals
***HIKVISION* Technical Support**