

Video Intercom Second Generation Indoor Station V2.0.2 Build190311 Release Note (2019-03-11)

Device Model: DS-KH8350-WTE1 DS-KH8350-TE1 DS-KH6320-WTE1 DS-KH6320-TE1 DS-KH8520-WTE1	Firmware Version	Indoor Station: V2.0.2_190311
	SDK Version	HCNetSDK V5.3.6.40_build20180913
	iVMS4200 Version	V2.7.1.3build20190121
	Hik-Connect APP	IOS 3.7.1.181228 Android 3.7.1.0125
	Batch tools	V1.0.1.8build20190114

New Features

1. Add local configuration wizard for first time use.

1) Wizard step 1: After activating the device, select the device language

Wizard-Language 1/4

English ✓

Русский

Deutsch

Italiano

Français

Português

Next
Skip

Wizard-Network 2/4

DHCP

Local IP 10.9.96.14

Subnet Mask 255.255.255.0

Gateway 10.9.96.254

Previous
Next
Skip

2) Wizard step 2: Enable DHCP to automatically obtain the network address or manually configure the device IP address, subnet mask, and default gateway.

3) Wizard step 3: In this interface, you can set whether the device is a main indoor station or extension (the floor number is only related to the elevator controller, and the room number is the actual calling number)

Main indoor station interface

Wizard-Settings 3/4

Indoor Station Type Indoor Station >

Floor 1

Room No. 1

Previous
Next
Skip

Indoor extension interface

Wizard-Settings 3/4

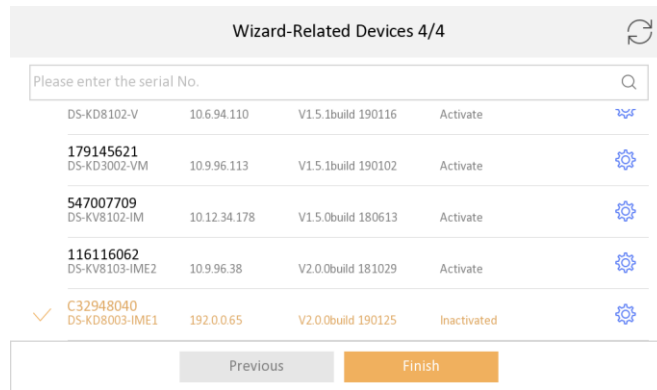
Indoor Station Type Indoor Extension >

No. (1 - 5) 1

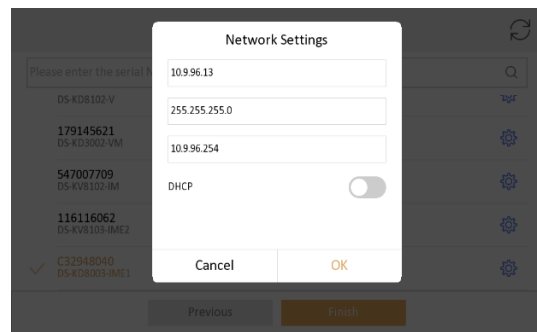
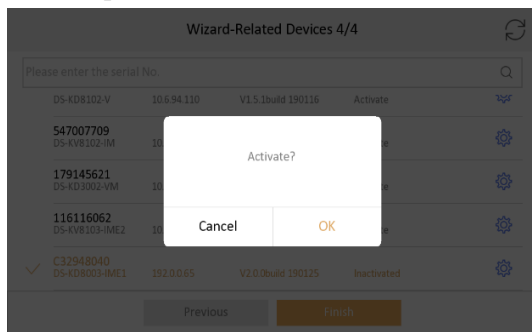
Room Name. Room 1

Previous
Next
Skip

4) Wizard step 4: Searching for devices in the same LAN

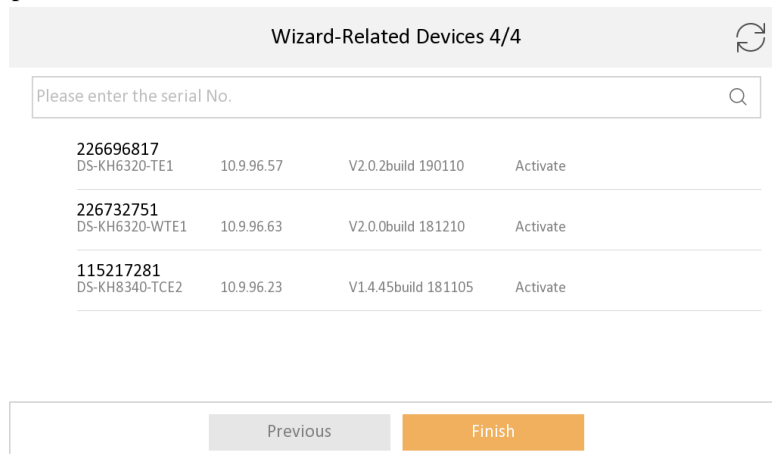


4.1) Main indoor station supports searching door station in the same LAN, and supports activation for door station. (When the inactivated device is selected, a dialog box pops up asking if activation is required, and the activation password is the indoor station activation password)

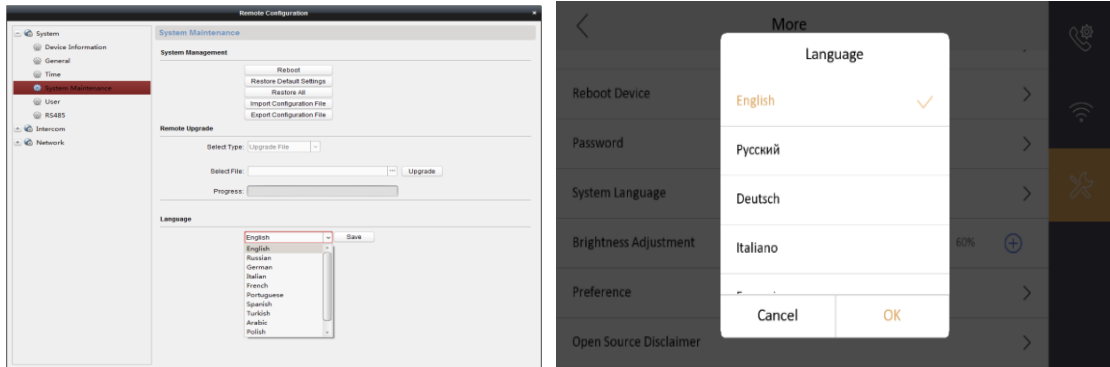


4.2) the indoor station supports modifying the IP of the activated door machine. It can be manually modified or DHCP. (only support using DHCP for modular door station, H5/H2/H0 (First Generation) door station don't support)

4.3) Indoor extension supports searching for main indoor station in the same LAN. It does not support activation, modification of IP, synchronization language, or full restoration of default parameters.

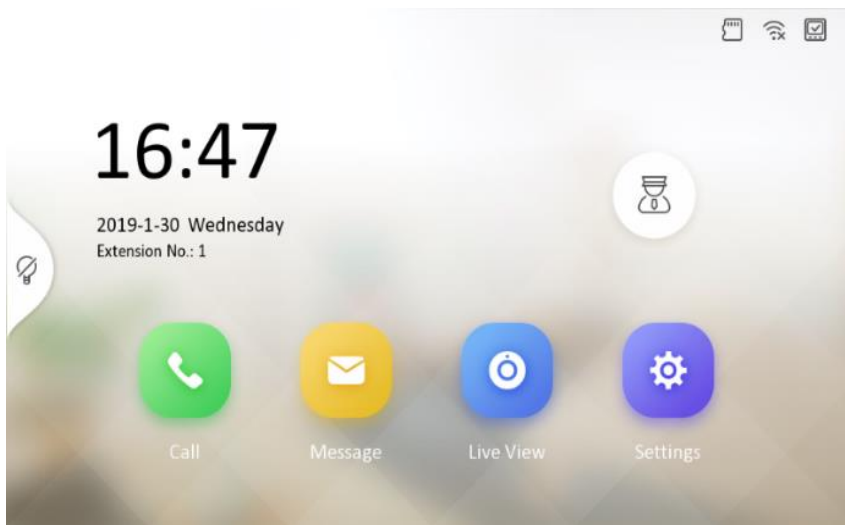


2. Supports 15 languages: English, France, Portuguese, Spanish, German, Italian, Polish, Hungarian, Dutch, Romanian, Bulgarian, Czech, Greek, Croatian, Serbian.



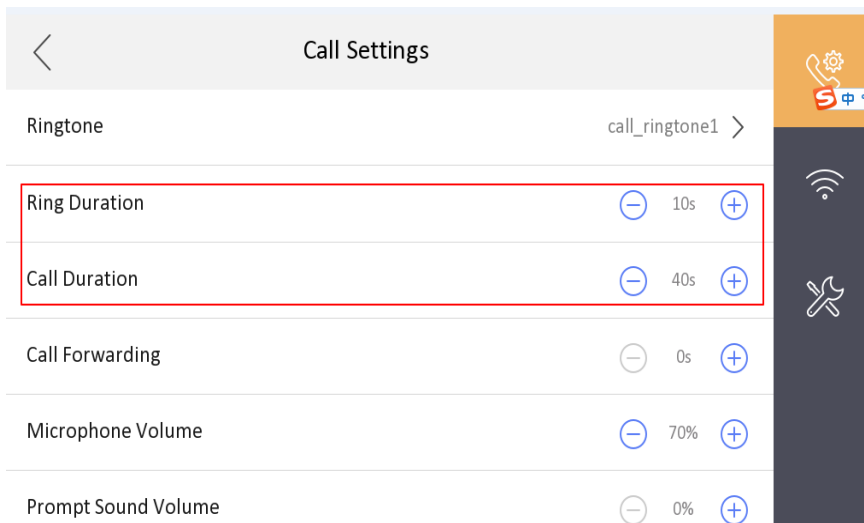
3. New GUI design, clear and easier.

4. Display room number / extension number on local interface.

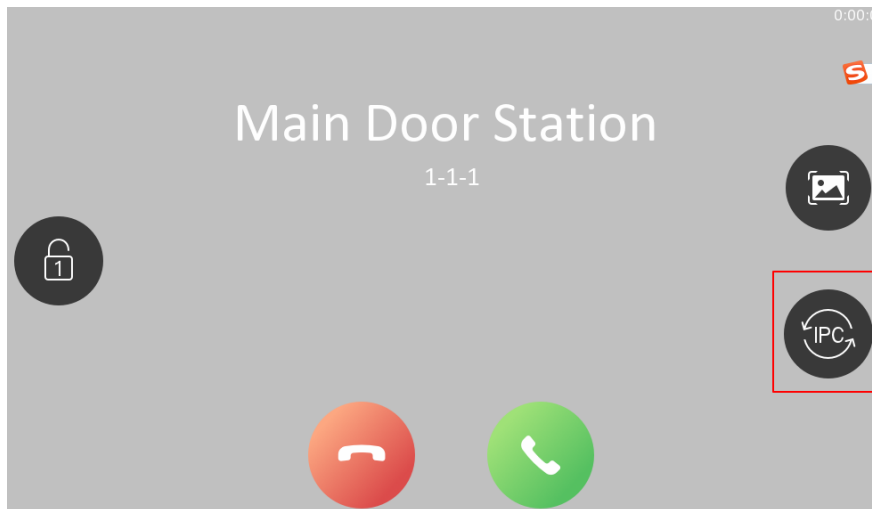


5. Support setting ring duration and call duration separately.

- 1) The ring duration is indoor station ringing time and the call duration is total call waiting time.
- 2) Ring duration: 0~60s, Call duration: 30~60s. Ring duration must be shorter than call duration, otherwise, the parameter cannot be saved.
- 3) Indoor extension's call duration is determined by main indoor station.



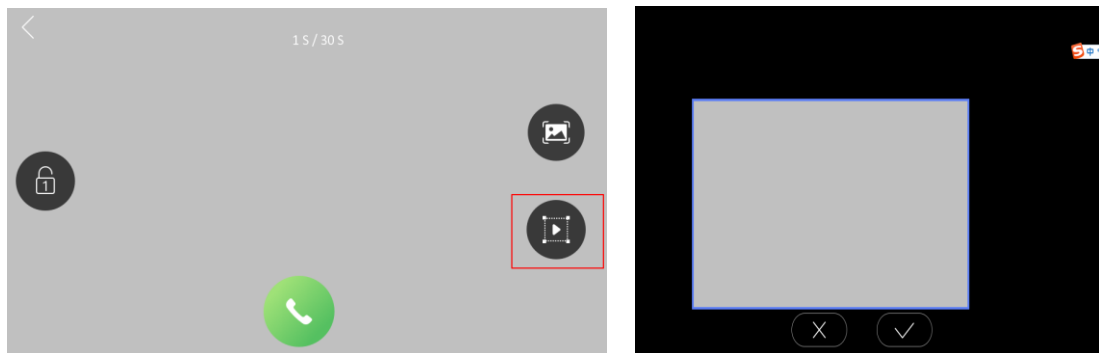
6. Support to live view other IPCs when answering the call.



7. Support pictures capture during live view.

8. Support saving captured pictures when no TF card is inserted (about 30 pictures).

9. Support modifying door station display area (need to input door station's activation password every time modifying).



10. Indoor extension supports call records function

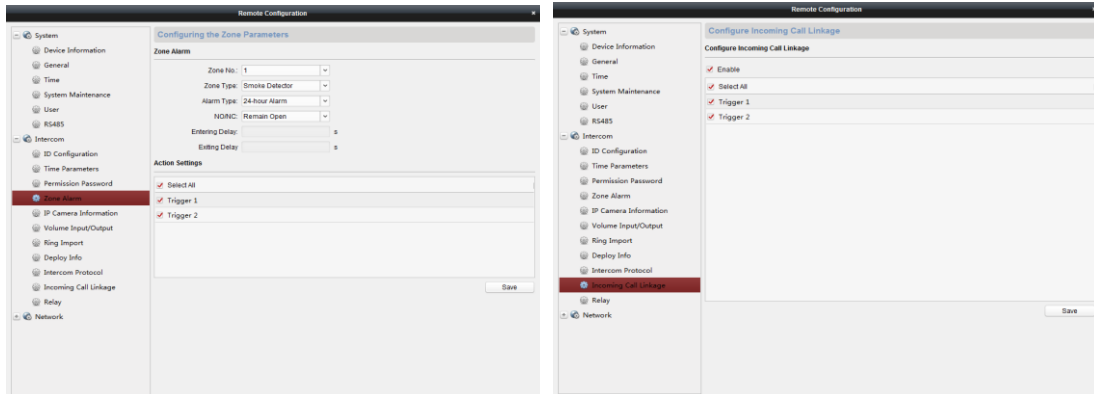
1) Extension supports saving call records, and supports up to 200 records.

2) The indoor extension call record supports deletion, emptying, and supports callback to the main indoor station, indoor extension, and master station.

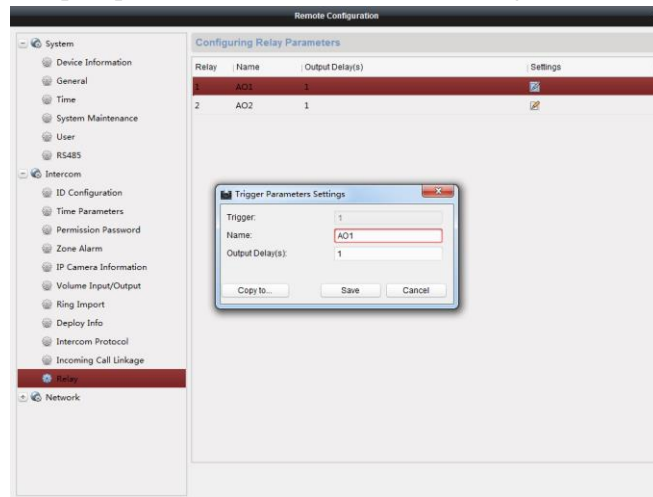


11. Support alarm outputs function.

- 1) Alarm inputs link alarm outputs
- 2) Incoming call link alarm outputs

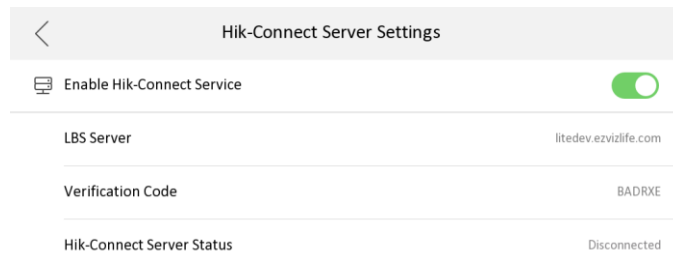


- 3) Configure alarm outputs parameters on iVMS4200, time range: 1~180 seconds



12. Configure Hik-connect cloud service parameter locally:

- 1) Check cloud service status, including offline, online;
- 2) Modify verification code;
- 3) Display QR code (This QR code contains serial No. and verification code)

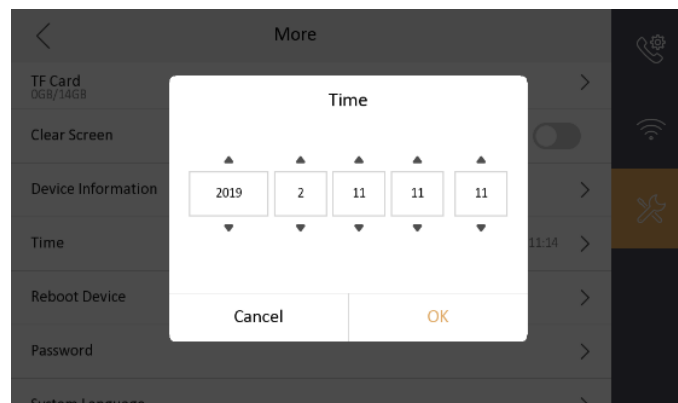


(The QR code on the label back of the device does not contain a verification code. You need to enter the verification code again after scanning.)

13. The alarm and call elevator module can be configured to hide or display

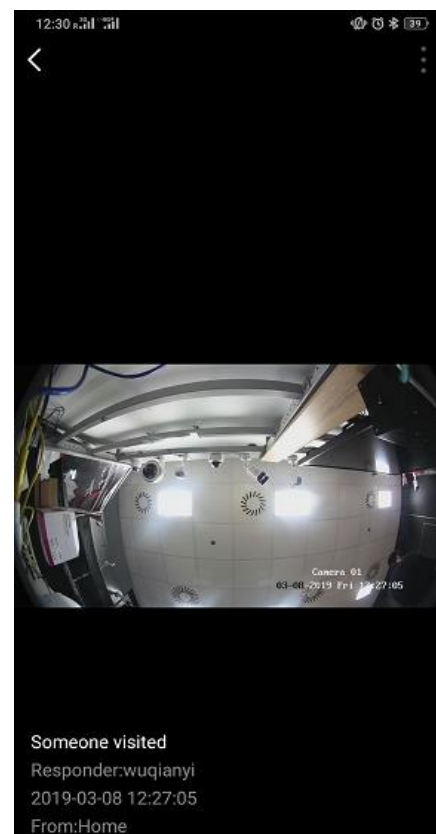
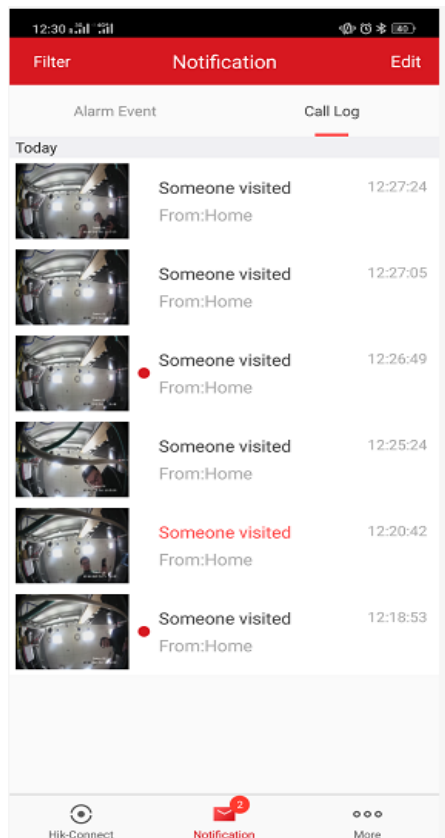


14. Support change time locally, time range: 2000-1-1 00:00 ~ 2037-12-31 23:59



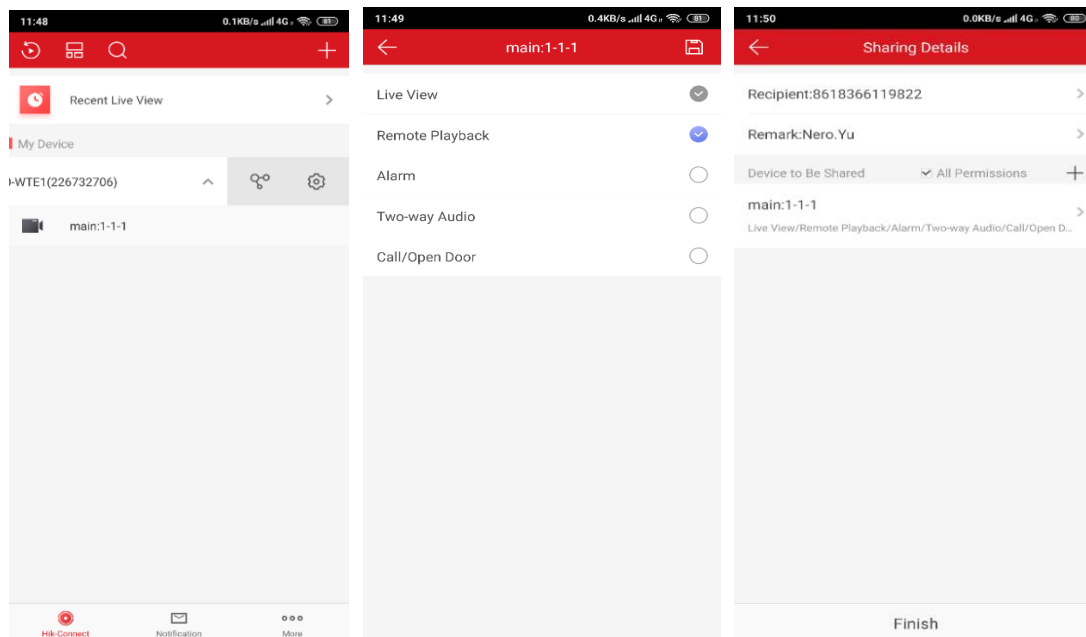
15. Hik-Connect call records function:

- a. You can view the call records on Hik-Connect. The call records information includes: captured pictures, whether the call is received, time, and who answered the call.
- b. The number of call records is not limited and save in cloud for 90 days.



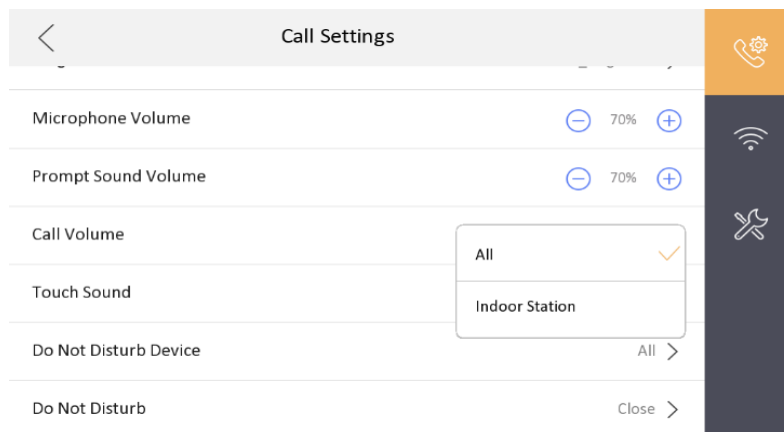
16.Account sharing:

- a. Device can be shared up to 4 accounts.
- b. Main account chooses which permission can be shared, include: live view, alarm, two-way audio, call/open door (remote playback not support).
- c. Sharing steps: Open HC to enter more interfaces, then enter the “View My Sharing” interface, click “Share” button, enter the account of the shared object, select the shared device and function to share



Modified Features

1. Support choose “all” or “indoor station” for “Do Not Disturb” mode.
 - 1) In DND mode, devise will not accept calls, but still save incoming call records.
 - 2) If choose “Indoor Station” for DND mode, door station/master station can still call in while other indoor station cannot call in.
 - 3) If choose “all” for DND mode, All devices cannot call in.
 - 4) In standard SIP mode, only ‘All’ is supported, and don’t support to configure for disturbing from indoor station.



Note

1. Switching language doesn't require restarting device when the device is first started; switching the language from the second time, the device needs to be rebooted to take effect.
2. This version does not support daylight saving time.
3. Wi-Fi does not support to connect to WEP encryption
4. 8350-WTE1 and 8350-TE1 only have WIFI difference, 6320-WTE1 and 6320-TE1, except for the difference of WIFI, 6320-TE1 does not have RS-485, and 2 alarm outputs.
5. 8350-WTE1/TE1 models are I/O outputs, 6320-WTE1/TE1, 8520-WTE1 are relay outputs.

Customer Impact and Recommended Action

This new firmware upgrade is to improve product performance, and will take effect automatically after upgrading from previous versions. We'd like to inform you the above changes. Also, we are sorry for any possible inconvenience of use-habit changes caused by this action.

For questions or concerns, please contact our local technical support team.

Note:

- Hikvision has all rights to alter, modify and cancel this notice.
- Hikvision doesn't give any guarantee for old models' stock.
- Hikvision is not liable for any typing or printing errors.
- For special model's change details, please contact our local technical support team.

Hikvision Digital Technology CO., Ltd.
No. 555 Qianmo Road, Binjiang District, Hangzhou 310052,
China
Tel: +86-571-8807-5998
FAX: +86-571-8993-5635
Email: support@hikvision.com