

# Android Indoor Station

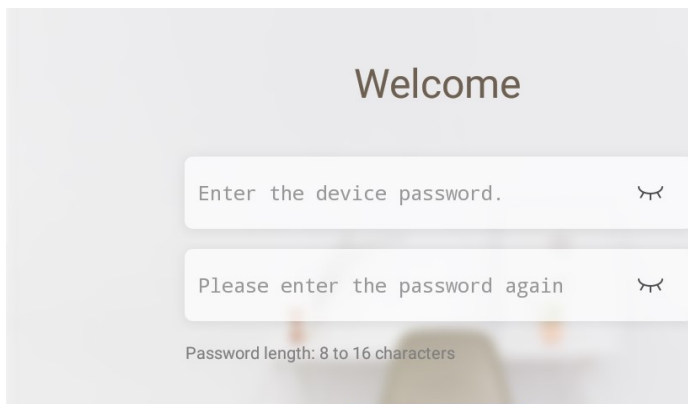
## V 2.1.8 Build 200515 Release Note

### (2020-06-01)

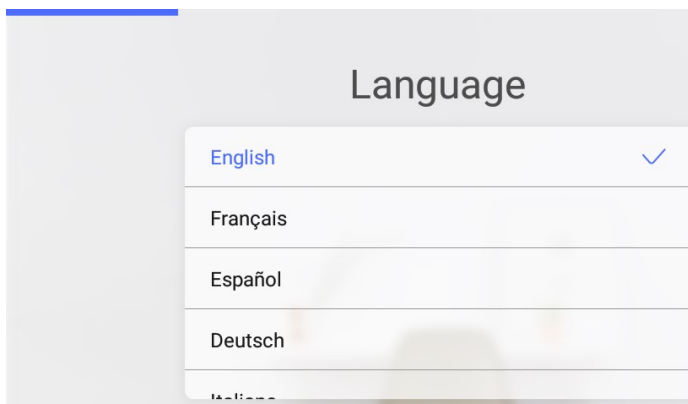
Device Model	DS-KH9510-WTE1、DS-KH9310-WTE1
Firmware Version	Indoor Station: V2.1.8_build200714
iVMS-4200 Version	V3.3.1.4 build 200806
Hik-Connect APP	V4.6.2.0724

#### **Function Description**

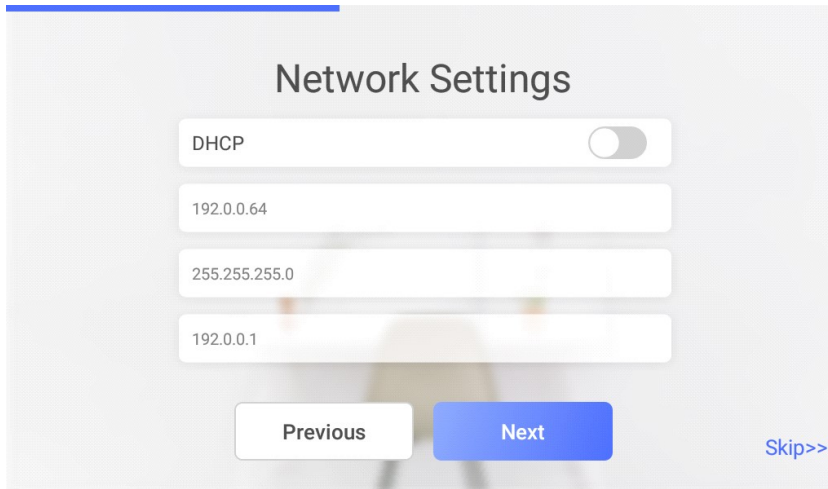
1. New Android UI interface.
2. Languages
  - a) Support multi-language in 5 countries, language types include English, French, Spanish, German, and Italian;
  - b) Support local switching and remote switching of different languages, effective immediately.
3. Local configuration wizard
  - a. Activation interface



- b. Language interface

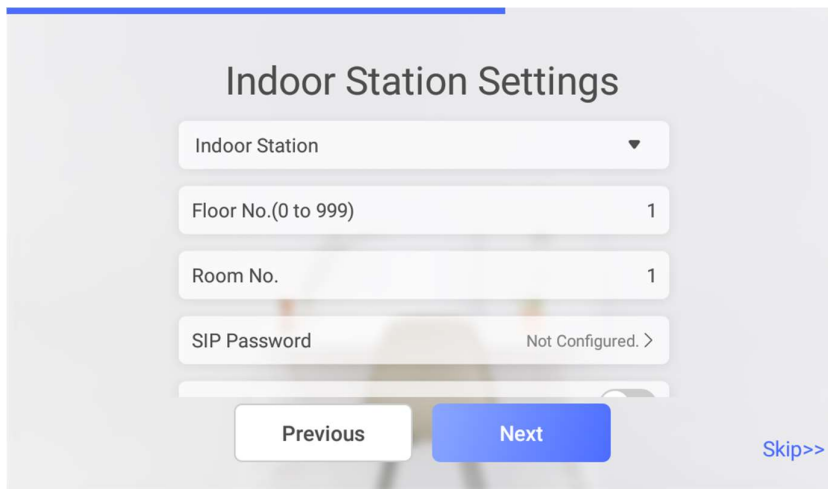


## c. Network Setting interface



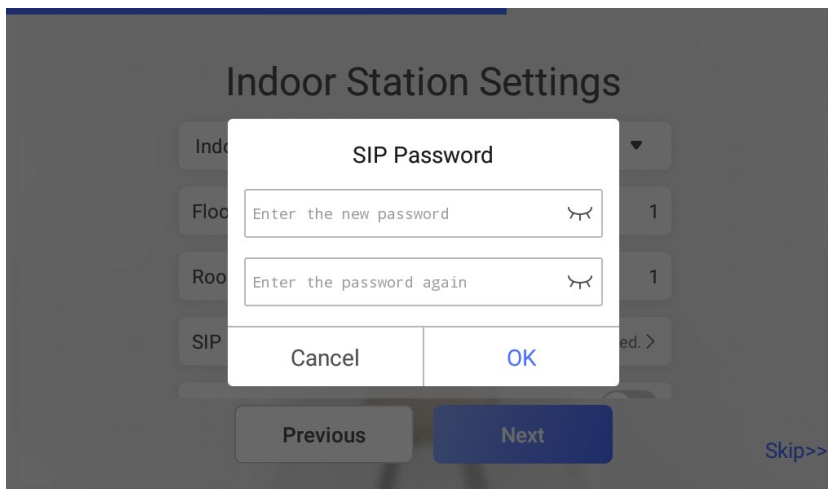
The Network Settings interface features a title 'Network Settings' at the top. Below it, there is a DHCP toggle switch currently turned off. Underneath are three input fields: the first contains '192.0.0.64', the second contains '255.255.255.0', and the third contains '192.0.0.1'. At the bottom, there are three buttons: 'Previous' (disabled), 'Next' (active), and 'Skip>>' (disabled).

## d. Indoor Station Parameter Settings



The Indoor Station Settings interface has a title 'Indoor Station Settings'. It includes a dropdown menu for 'Indoor Station', a 'Floor No.(0 to 999)' field with the value '1', a 'Room No.' field with the value '1', and a 'SIP Password' field with the text 'Not Configured. >'. At the bottom, there are three buttons: 'Previous' (disabled), 'Next' (active), and 'Skip>>' (disabled).

SIP password is actually Register Password, which is suitable for our security 2.0 protocol. They can communicate normally only when the **SIP passwords (Register passwords)** of the door station, indoor station and indoor extension are the **same**.



This image shows the Indoor Station Settings interface with a modal dialog box open for setting the SIP Password. The dialog has a title 'SIP Password' and two input fields: 'Enter the new password' and 'Enter the password again', both with eye icons for visibility. At the bottom of the dialog are 'Cancel' and 'OK' buttons. The background interface is dimmed, showing the 'Indoor Station Settings' title and the 'SIP Password' field with the text 'Not Configured. >'. At the bottom of the background interface, there are three buttons: 'Previous' (disabled), 'Next' (active), and 'Skip>>' (disabled).

## e. Indoor extension Parameter Settings

### Indoor Station Settings

Indoor Extension ▼

Extension No. 1

SIP Password Configured >

Select Indoor Station 0.0.0.0 >

Previous Finish

## f. Activate and connect door station

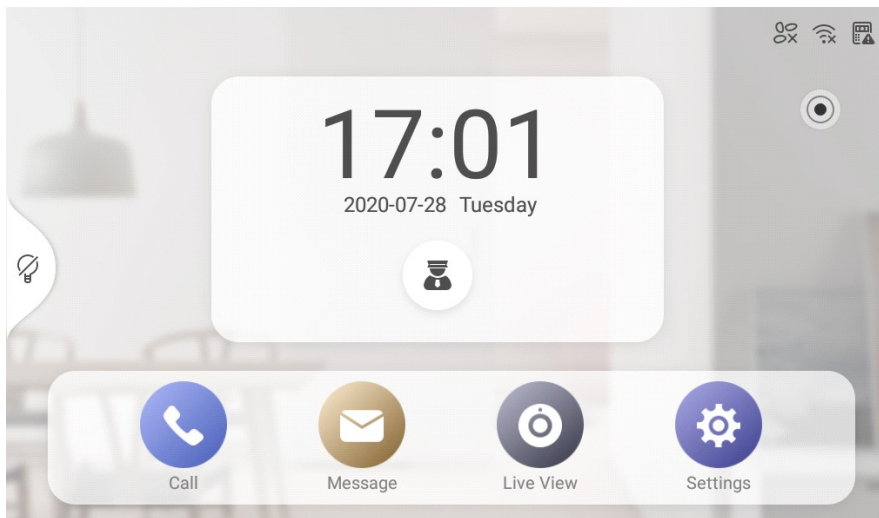
### Door Station Settings

Enter the serial No. 🔍

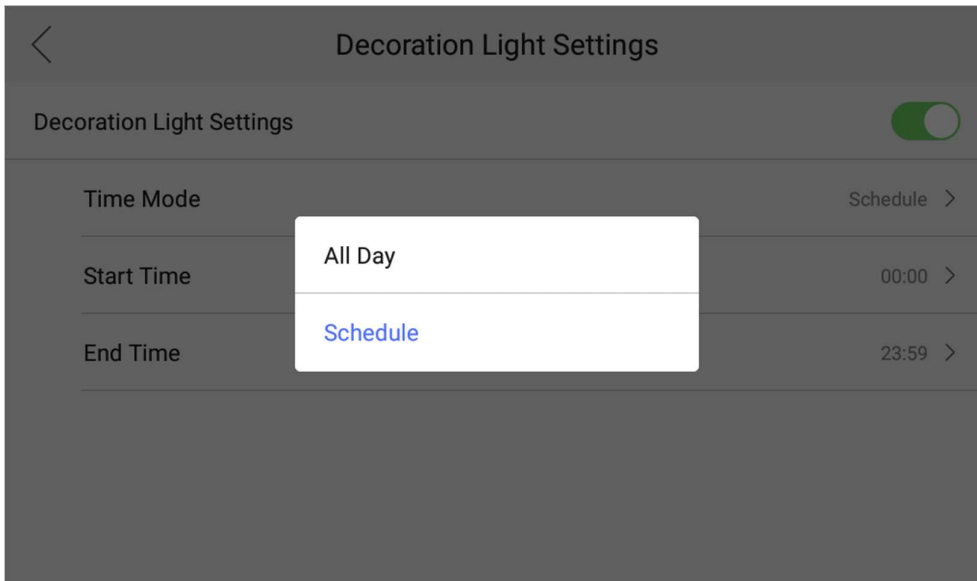
<input type="radio"/>	E39931984 10.9.96.13	DS-K1T671TM-3XF Activated. ⚙️
<input type="radio"/>	E05283498 10.9.96.17	DS-K1T671TMFW Activated. ⚙️
<input checked="" type="radio"/>	C32948021 10.9.96.17	DS-KD8003-IME1 Activated. ⚙️
<input type="radio"/>	E35500009	DS-K1T671TM-3XF ⚙️

Previous Finish

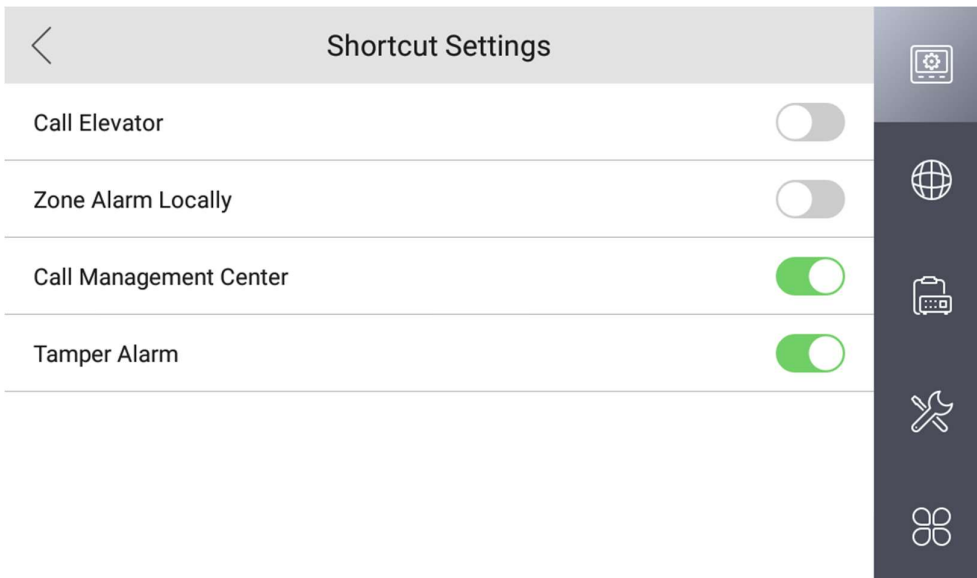
## g. Local main interface



#### 4. Support decoration light on or off, but only supports local modification

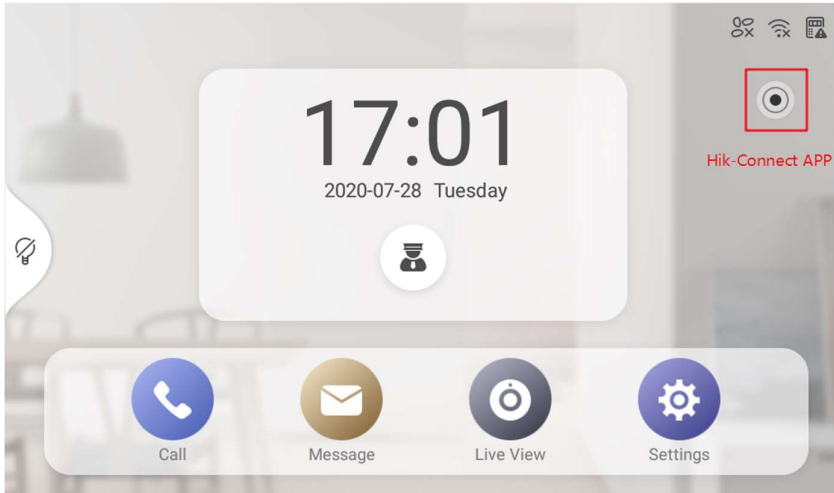


#### 5. Tamper alarm function

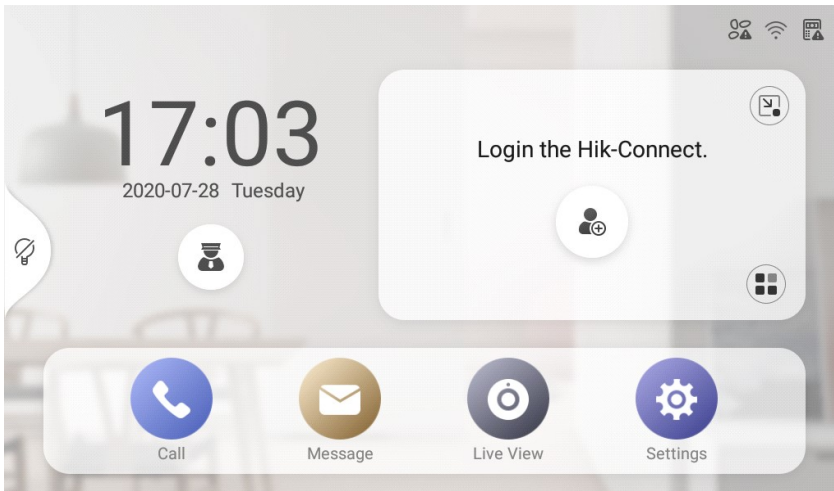


## 6. Local interface login Hik-Connect App function

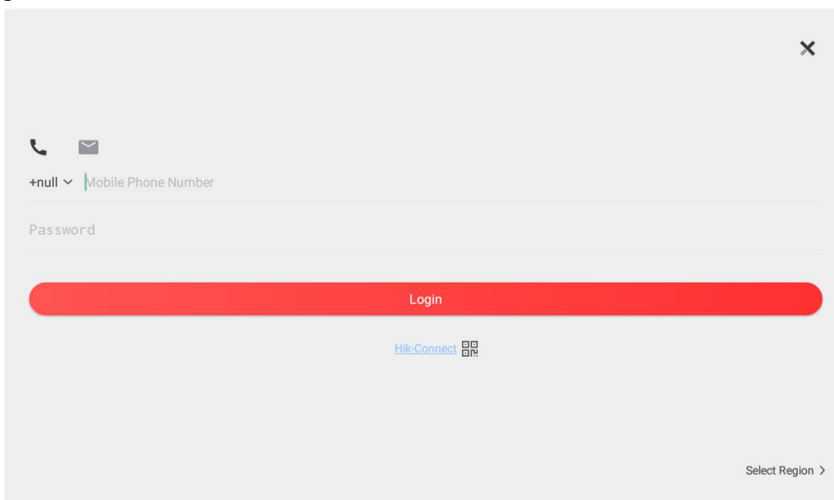
a. Hik-Connect function is hidden in this position by default.



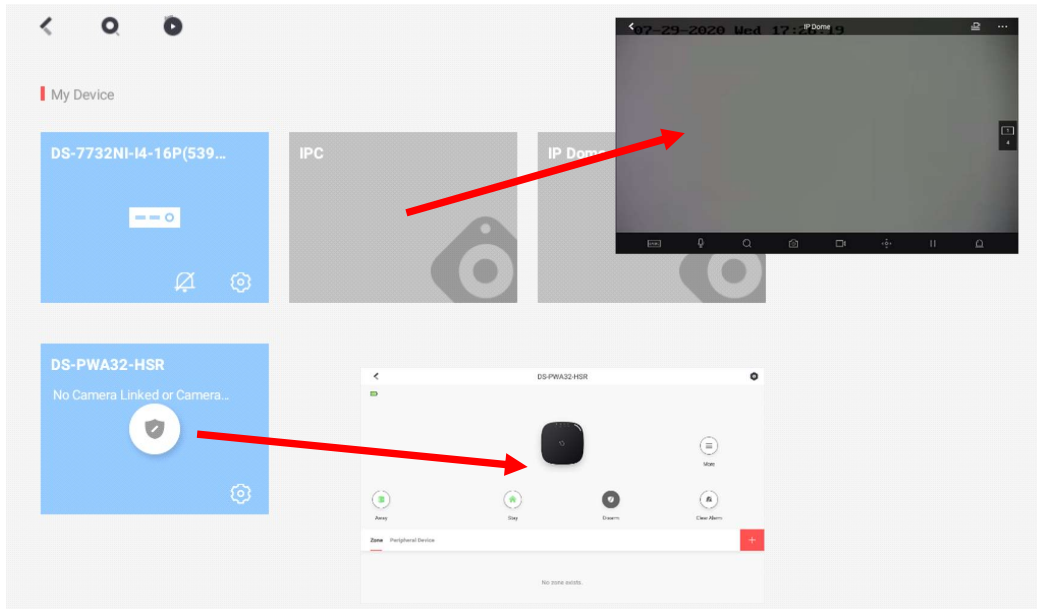
b. If you are not logged in, it will show 'Login the Hik-Connect'.



c. Android indoor station does not support online registration, you need to prepare the account password of Hik-Connect in advance.

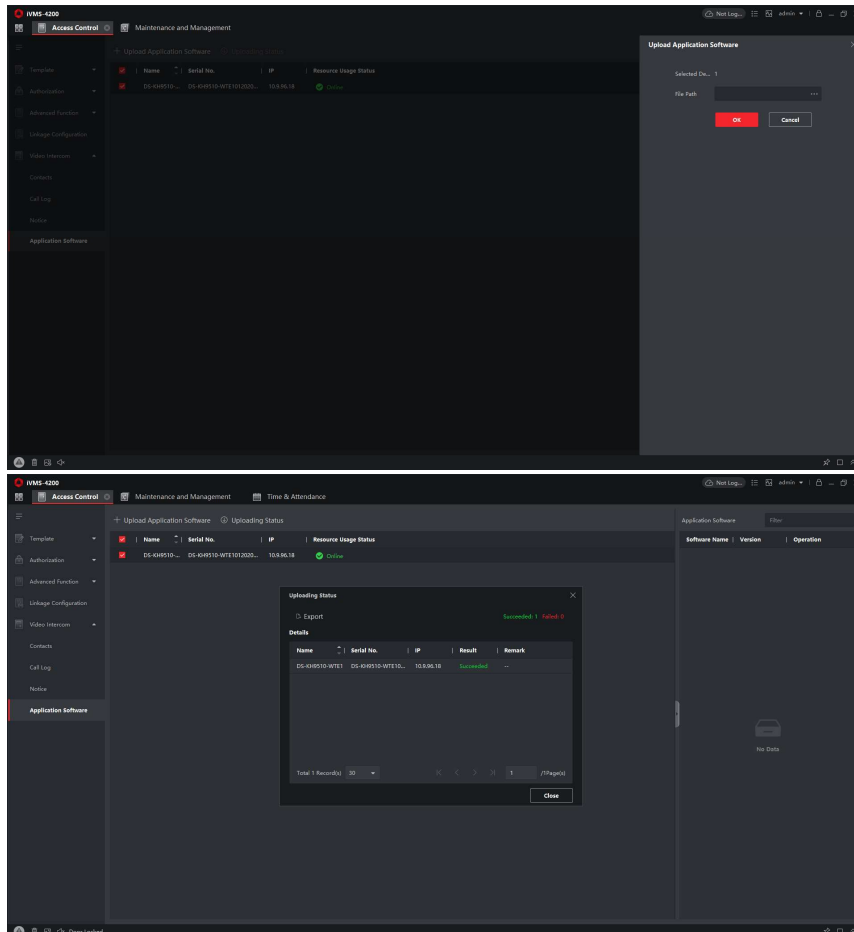


d. Function display: you can arm and disarm the alarm device or preview the playback back-end device, etc.

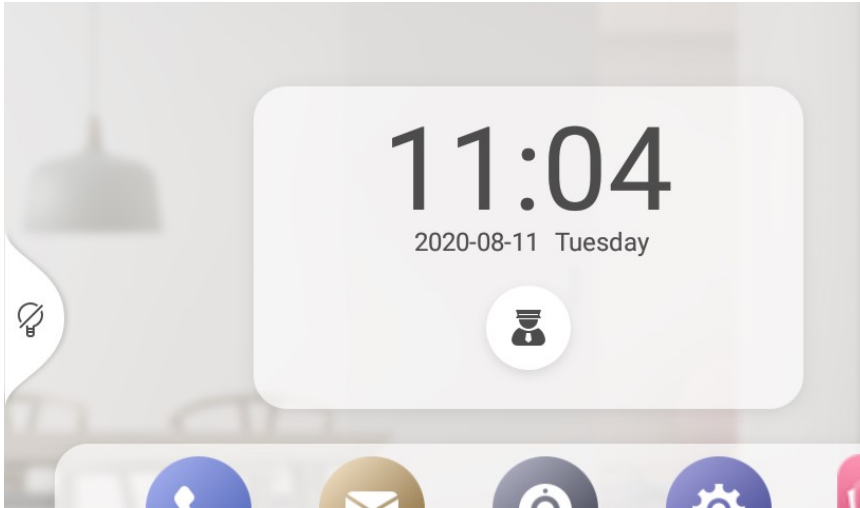


7. The device supports the use of Hikvision certified Android APP

a. Android APP can be imported through iVMS-4200



b. The installed third-party APP will be displayed on the right side of Setting.



**NOTE:**

1. This version does not support DST function
2. Indoor station Local Hik-Connect will not display the video intercom system or receive any push of the video intercom system.
3. The Android indoor station can only be used with the Android indoor station as Main and Indoor Extension.