

# 6 Series Indoor Stations

## Version: V2.1.50\_build220720

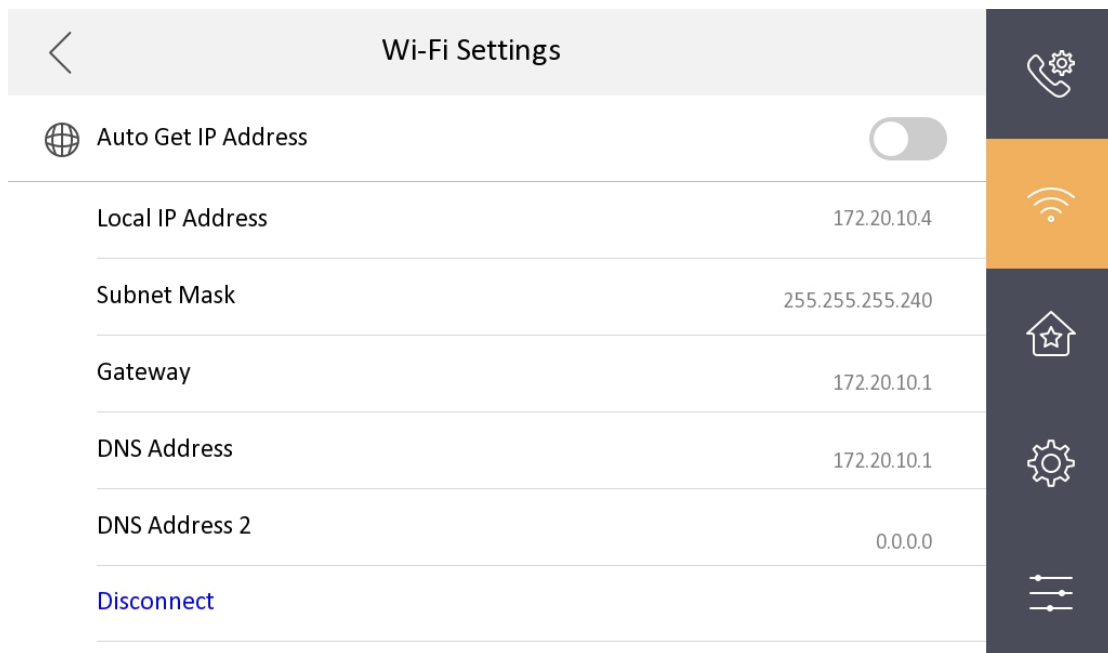
### Release Note

#### (2022-07-20)

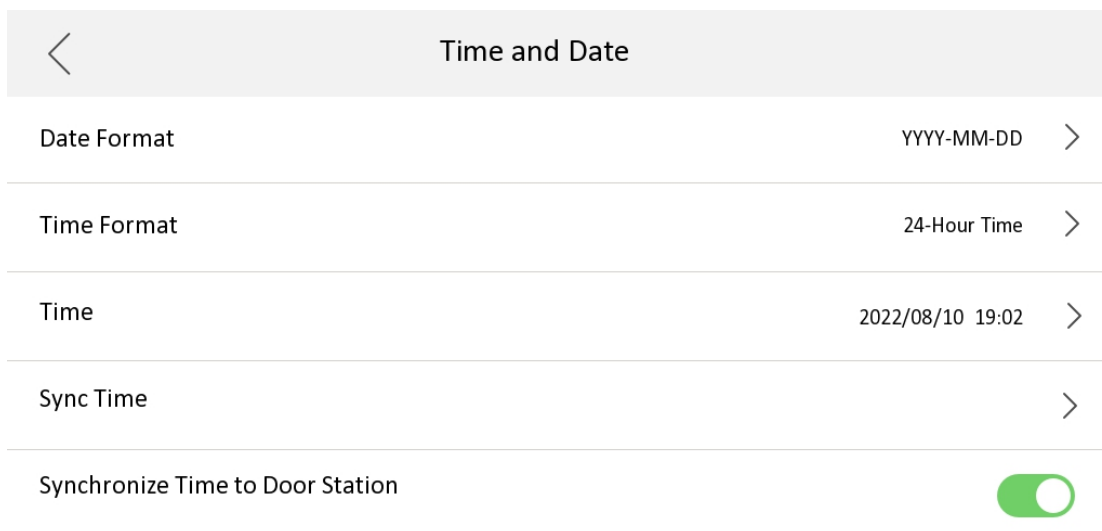
<b>Firmware Basic Information</b>	Firmware Version	V2.1.50_build220720
	Device Type	DS-KH6350-WTE1 DS-KH6320-LE1(B) DS-KH6320-LE1(B)/White DS-KH6320-TE1(B) DS-KH6320-WTE1(B) DS-KH6360-TE1 DS-KH6360-WTE1

#### New

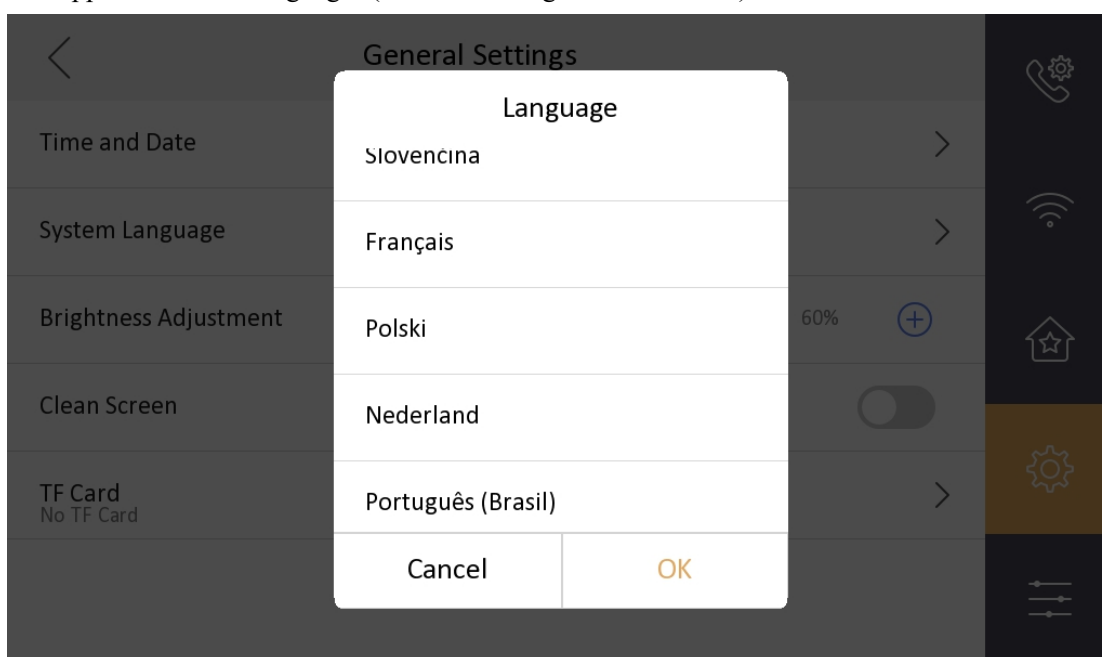
1. Supports static IP address configuration of Wi-Fi (DHCP, IP address, subnet mask, gateway, DNS1, DNS2).



2. Supports configuring time and time zone for the door station.

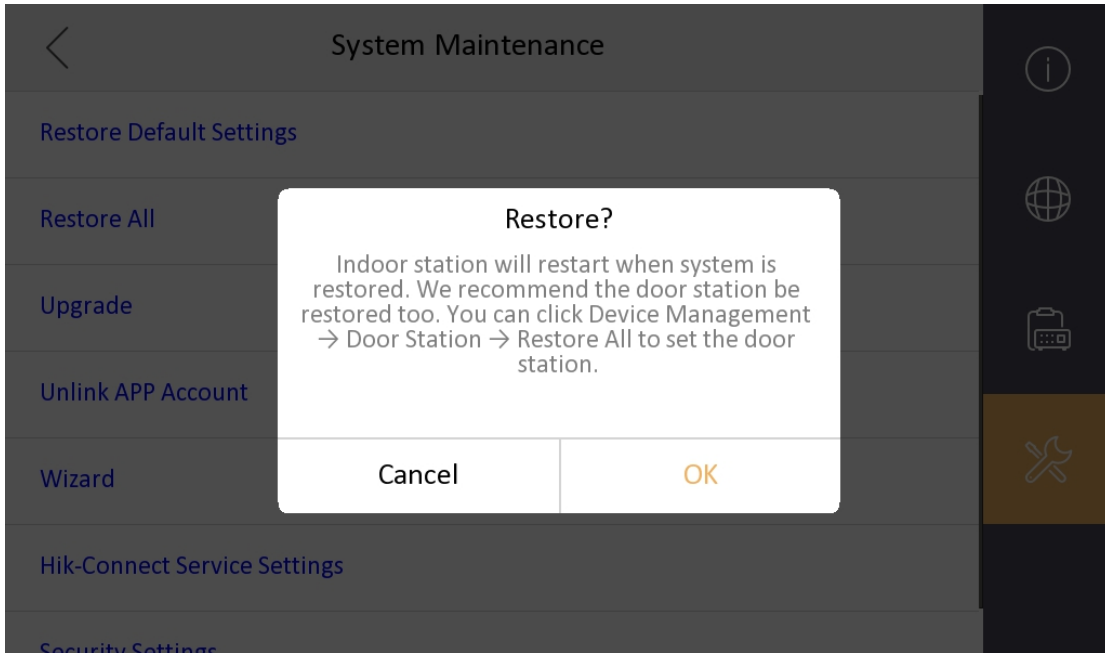


3. Supports C-S registration mode of indoor station and master station.
4. Supports two new languages (standard Portuguese and Slovak).

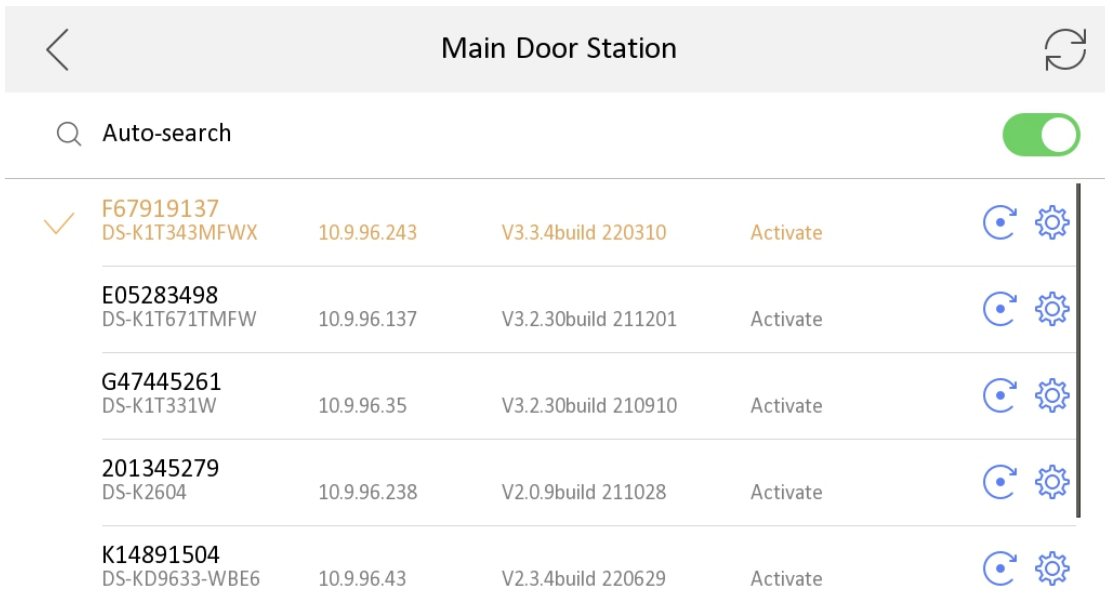


## **Fix**

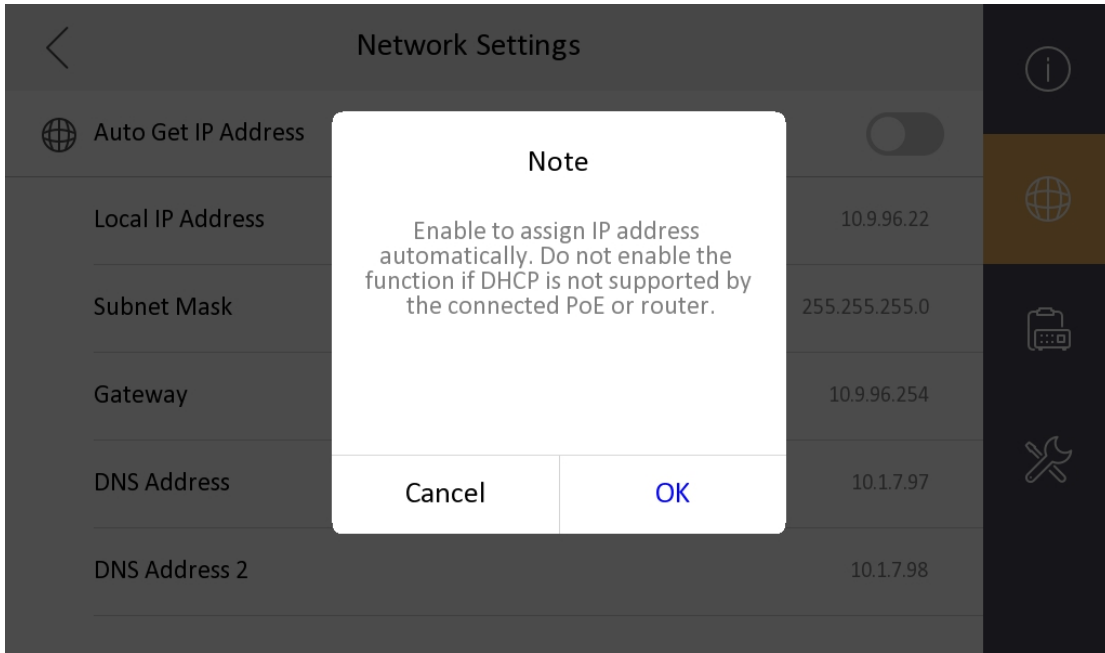
1. Optimizes the maintenance interface with a pop-up window when clicking **Restore** or **Restore All**.



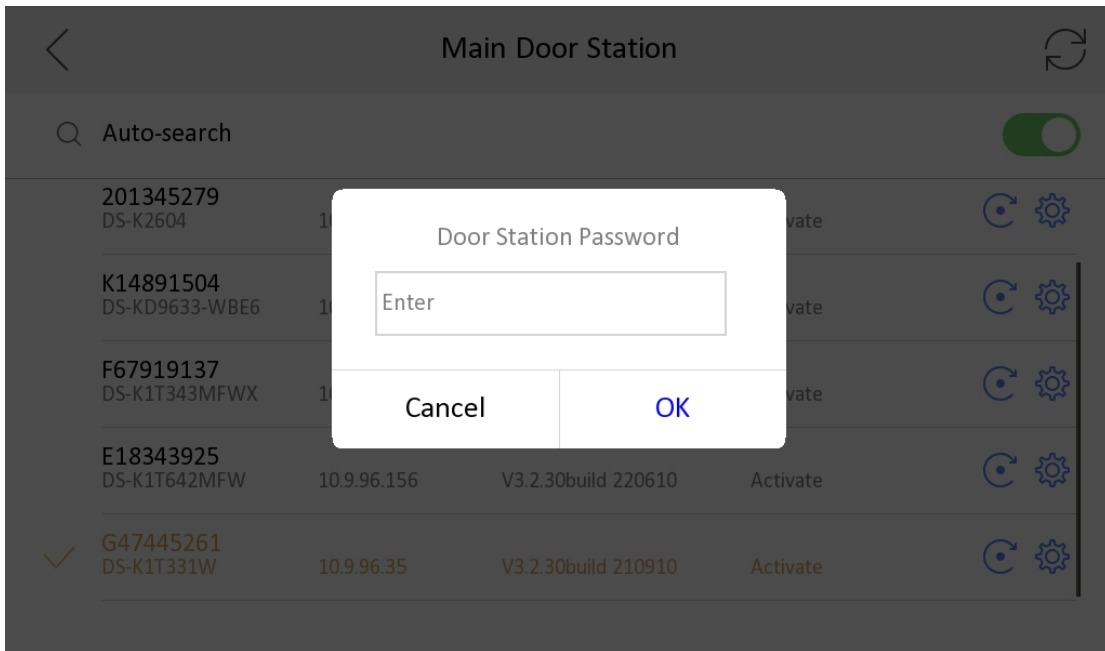
2. Adds the effect of selected door station when relating devices in wizard.



3. Adds a prompt when assigning network IP address automatically.



4. In configure wizard to related door station, when the door station password is different from the indoor station, prompt information will pop.



## 6 Series Indoor Stations

### Version: V2.1.44\_build220516

### Release Note

**(2022-05-22)**

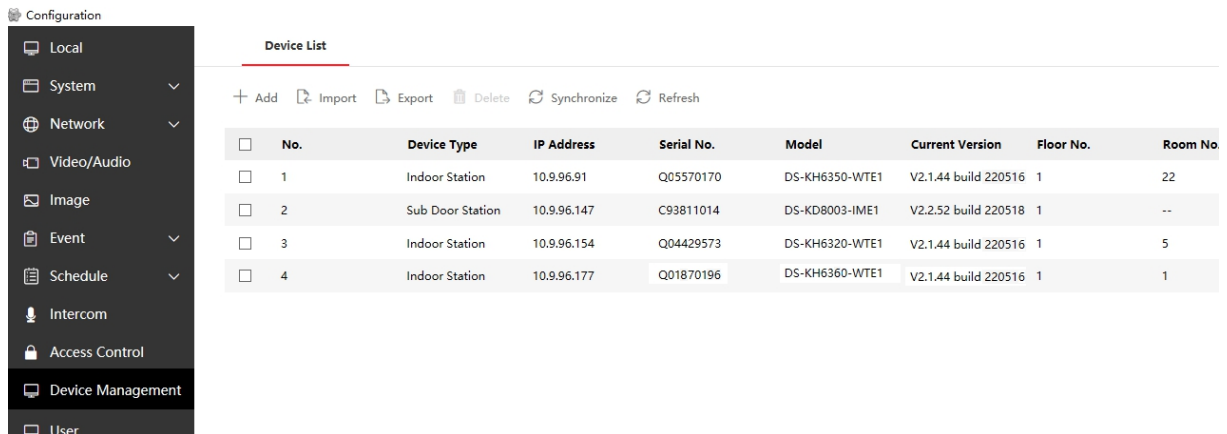
<b>Firmware Basic Information</b>	Firmware Version	V2.1.44_build220516
	Device Type	<p>DS-KH6350-WTE1</p> <p>DS-KH6320-LE1(B)</p> <p>DS-KH6320-LE1(B)/White</p> <p>DS-KH6320-TE1(B)</p> <p>DS-KH6320-WTE1(B)</p> <p>DS-KH6360-TE1</p> <p>DS-KH6360-WTE1</p>

**Fix**

1. Fixed a sync issue between device and Hik-Connect service.
2. Fixed a sync issue for Main-Sub indoor station mode.

**New**

1. Support the network parameters synchronized from villa door station.



**6 Series Indoor Stations**  
**Version: V2.1.38\_build220228**  
**Release Note**

(2022-03-01)

## 1. Firmware Basic Information

<b>Firmware Basic Information</b>	Firmware Version	V2.1.38_build220228
	Device Type	DS-KH6350-WTE1 DS-KH6320-LE1(B) DS-KH6320-LE1(B)/White DS-KH6320-TE1(B) DS-KH6320-WTE1(B) DS-KH6360-TE1 DS-KH6360-WTE1

### Notes:

Please update firmware to the latest version to ensure the perfect user experience

### 1.1 Recommended Firmware

It is recommended to use the following devices and version together, because they can cooperate and work normally after the docking test.

Test resource	Device type	Version
Release device	DS-KH6350-WTE1	V2.1.38_build220228
Door Station	DS-KD9203-E6	V2.2.37_build210929
	KD8023-E6	V2.2.2_build 201019
	DS-KD8003-IME1	V2.2.52_build 211126
	DS-KB8113-IME1	V2.2.51_build 211110
	DS-KV8413-WME1(B)	V2.2.53_build 211104
Indoor Station	DS-KH9510-WTE1	V2.1.28_build210803
	DS-KH6320-LE1	V1.4.58_build210823
	KH6320-WTE1	V2.1.32_build210926
Main Station	KM9503	V1.0.32_build210926

### Notes:

Test records only contain the cases for normally devices and do not represent all the scenarios and all the functions.

## 2. New Features

1. New version of the device is based on the last version and develop new appearances.



2. Support password recovery by security question. You can set as the following steps.

(1) "Wizard">Password reset method>change to security question.

Wizard-Password Reset Method 2/6

Change to Reserved Email

1. You father's first name.	>	<input type="text" value="Enter Answer"/>
2. You mother's first name.	>	<input type="text" value="Enter Answer"/>
3. Your teacher's first name in senior hig...	>	<input type="text" value="Enter Answer"/>

Previous Next Skip

(2) Configuration>system maintenance>security settings>security question

<Security Question

1. You father's first name.	>	Enter Answer
2. You mother's first name.	>	Enter Answer
3. Your teacher's first name in senior hig...	>	Enter Answer

3. The indoor Station adds the configuration item of code stream transmission mode, supporting choosing unicast and multicast.

According to the web setting for the switchers or the routers.

<SIP Settings

Registration Password	Configured >
stream transmission mode	Unit Broadcast >
Enable Standard SIP	<div style="display: flex; justify-content: space-between; align-items: center;"><span>Unit Broadcast</span><span style="color: #f00;">✓</span></div> <div style="border-top: 1px solid #ccc; padding-top: 5px;"><span>Group Broadcast</span></div>

4. Add message and snapshot configuration options, which are closed by default. After opening, you can configure the deletion time of message and screenshot.



Shortcut Settings	
Alarm	<input type="checkbox"/>
Call Management Center	<input type="checkbox"/>
Leave Message	<input checked="" type="checkbox"/>
Leave Message Time	30 days >
Snapshot	<input checked="" type="checkbox"/>
Snapshot Time	30 days >

## 4. Modified

1. The function of password recovery by email is switched to the configuration wizard
2. The compatibility of standard SIP Server is improved: (1) ASTERISK (2) FreePBX (3) 3CX (4) ELASTIX (5) PBXware (6) miniSipServer (7) Brekeke (8) OpenSIPs (9) Kamailio

Note:

- Hikvision has all rights to alter, modify and cancel this notice.
- Hikvision doesn't give any guarantee for old models' stock.
- Hikvision is not liable for any typing or printing errors.
- For special model's change details, please contact our local technical support team.

Hikvision Digital Technology CO., Ltd.  
No. 555 Qianmo Road, Binjiang District, Hangzhou 310052,  
China  
Tel: +86-571-8807-5998  
FAX: +86-571-8993-5635  
Email: support@hikvision.com