

Title:	How to Set Pin Code Authentication on Access Control Device	Version:	v1.0	Date:	10/24/2018
Product:	Access Control			Page:	1 of 4

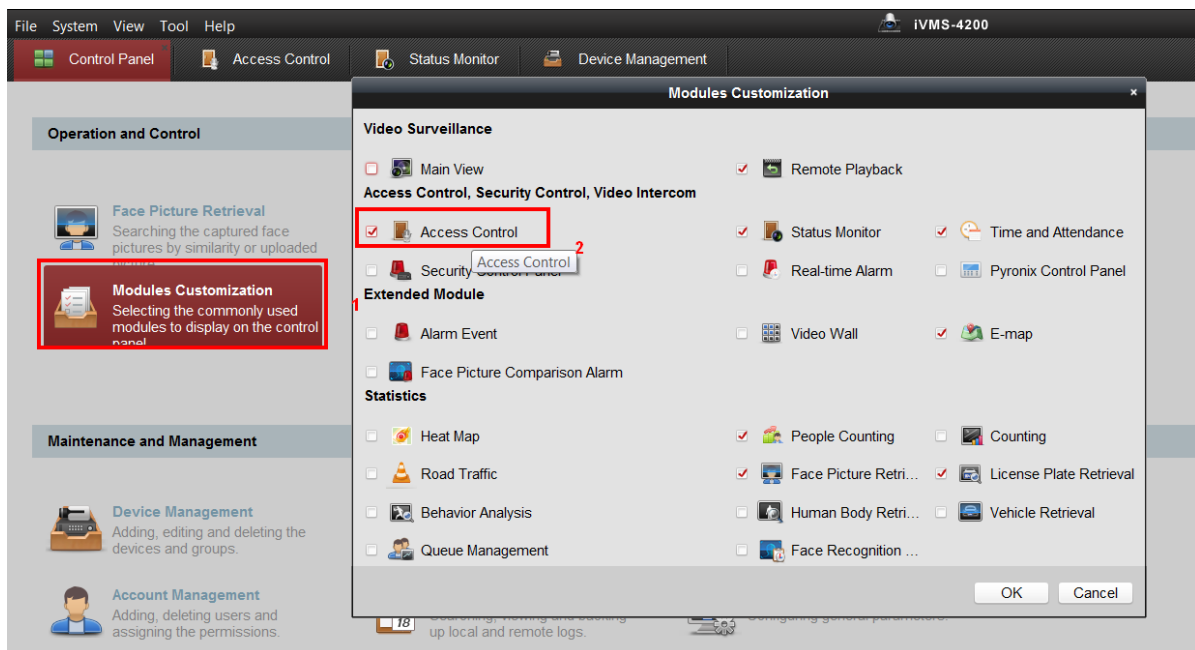
Preparation

1. This guide takes DS-K2604(firmware version: V2.0.4 build 180913) as an example to introduce how to set Pin code authentication on Access Control device.
2. Please download latest iVMS-4200 software and add device in advance.

How to Set Pin Code Authentication on Access Control Device

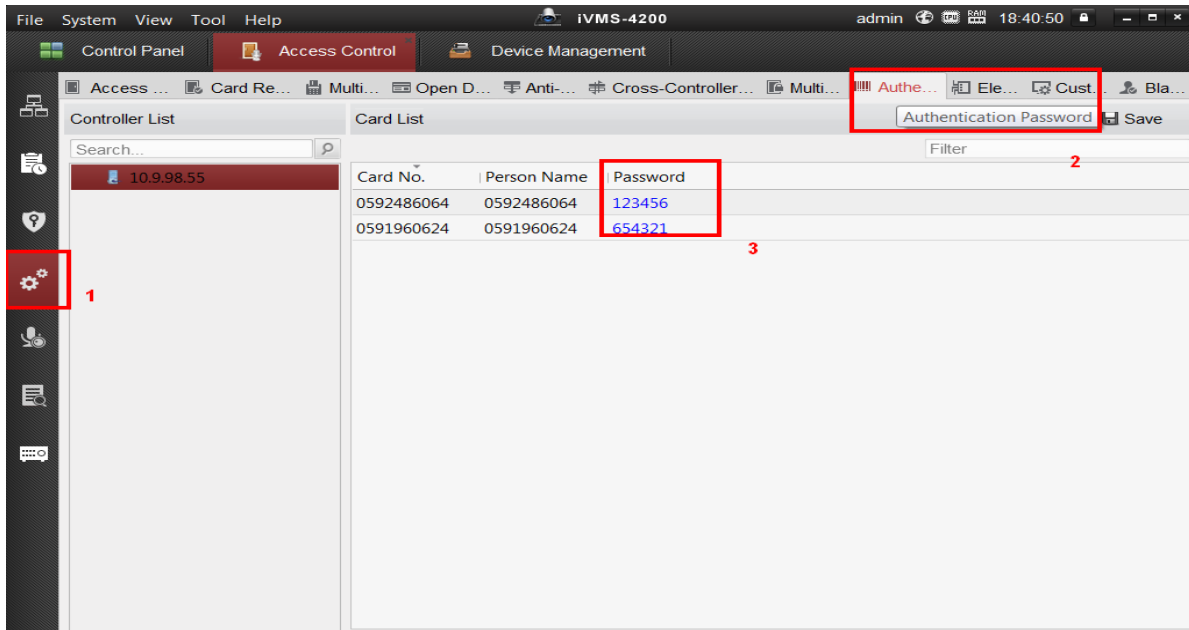
Steps:

- 1) Run iVMS-4200, click Modules Customization, add Access Control module.

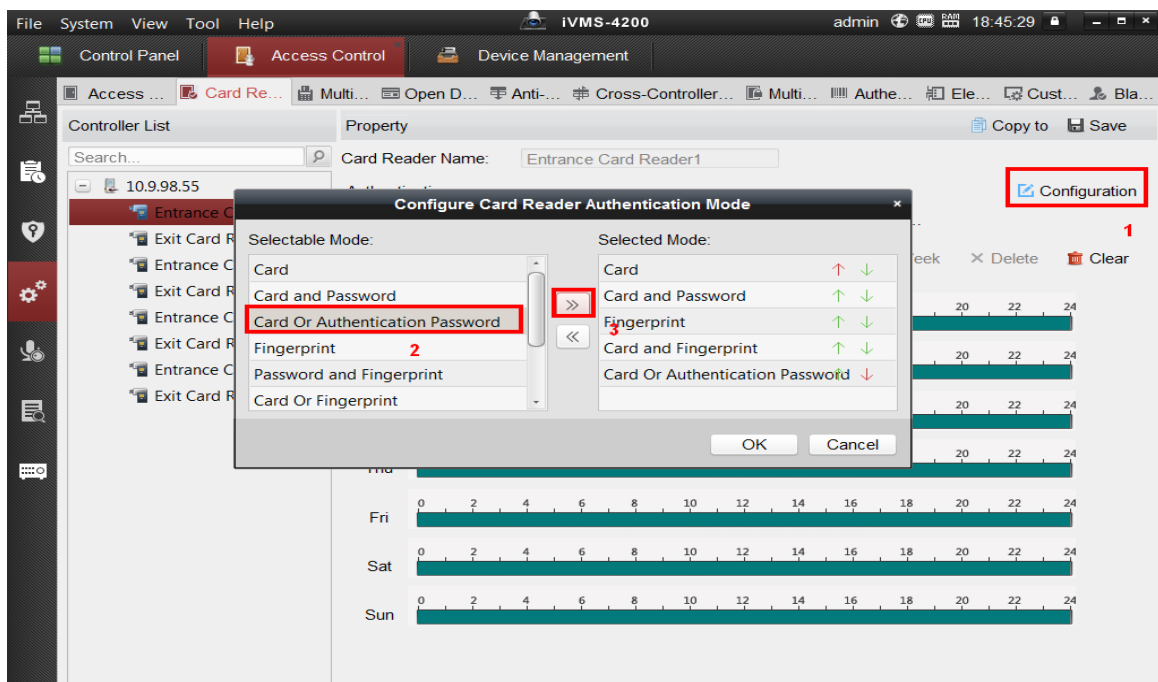


Title:	How to Set Pin Code Authentication on Access Control Device	Version:	v1.0	Date:	10/24/2018
Product:	Access Control			Page:	2 of 4

- 2) Go to **Access Control>Advanced Function>Authentication Code**, assign code to each card which is linked to access control device. Click Save.

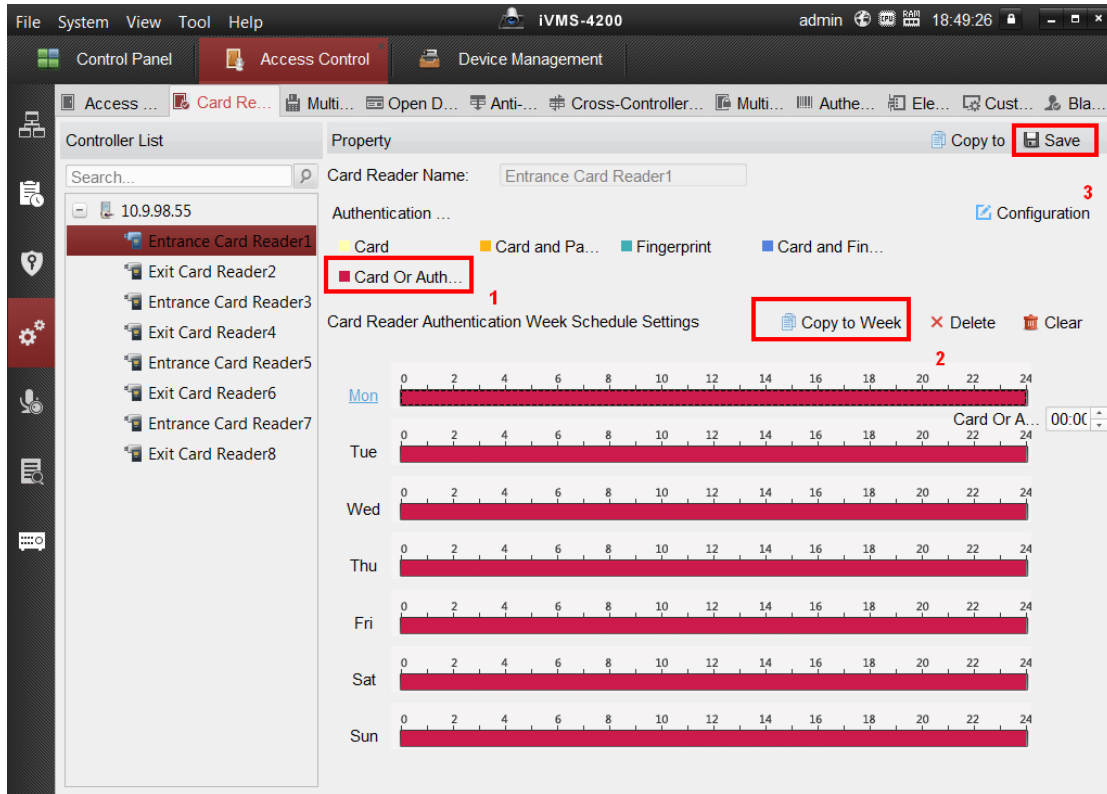


- 3) Switch to **Card Reader Authentication** page, choose a card reader, Click **Configuration** to add Card or Authentication password mode to the Selected Mode list. Click Save.



Title:	How to Set Pin Code Authentication on Access Control Device	Version:	v1.0	Date:	10/24/2018
Product:	Access Control			Page:	3 of 4

- 4) Choose **Card or Authentication Password mode**, drag mouse to finish Card Reader Authentication Week Schedule Settings, Click **Copy to week** and **Save**.





Title:	How to Set Pin Code Authentication on Access Control Device	Version:	v1.0	Date:	10/24/2018
Product:	Access Control			Page:	4 of 4

First Choice for Security Professionals

***HIKVISION* Technical Support**