



**How to upgrade reader firmware
through serial port**

HIKVISION TECHNICAL SUPPORT TEAM

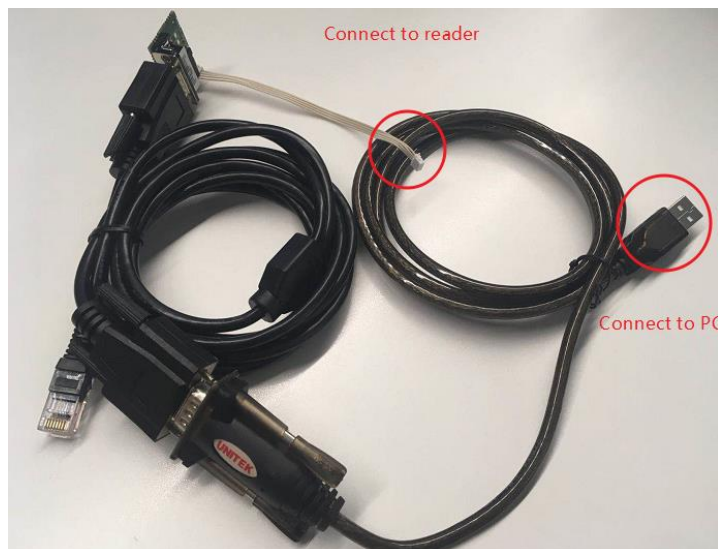
2018-7-16

How to upgrade reader firmware through serial port

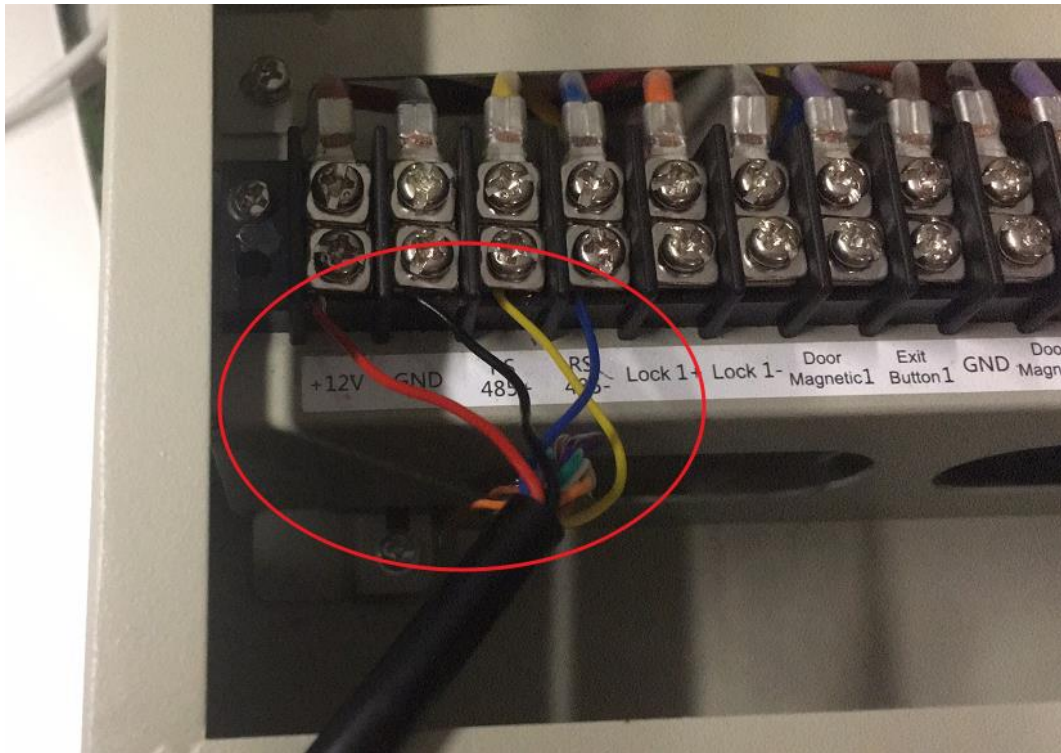
1. Prepare the cable and board which will be used to connect reader and our PC(4 parts)



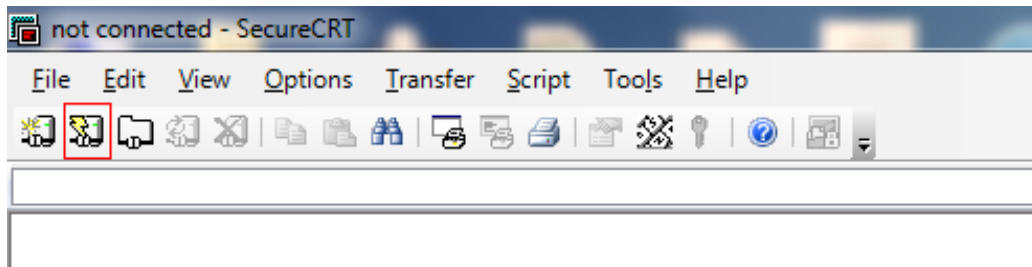
2. Connect cable and board together, then one side connect to reader (take DS-K1103M for example, other model has same operation), another side connect to computer USB port.



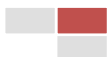
3. Connect reader cable(red, black, yellow, blue) to access controller power output and RS485 input(ensure access controller power is off)

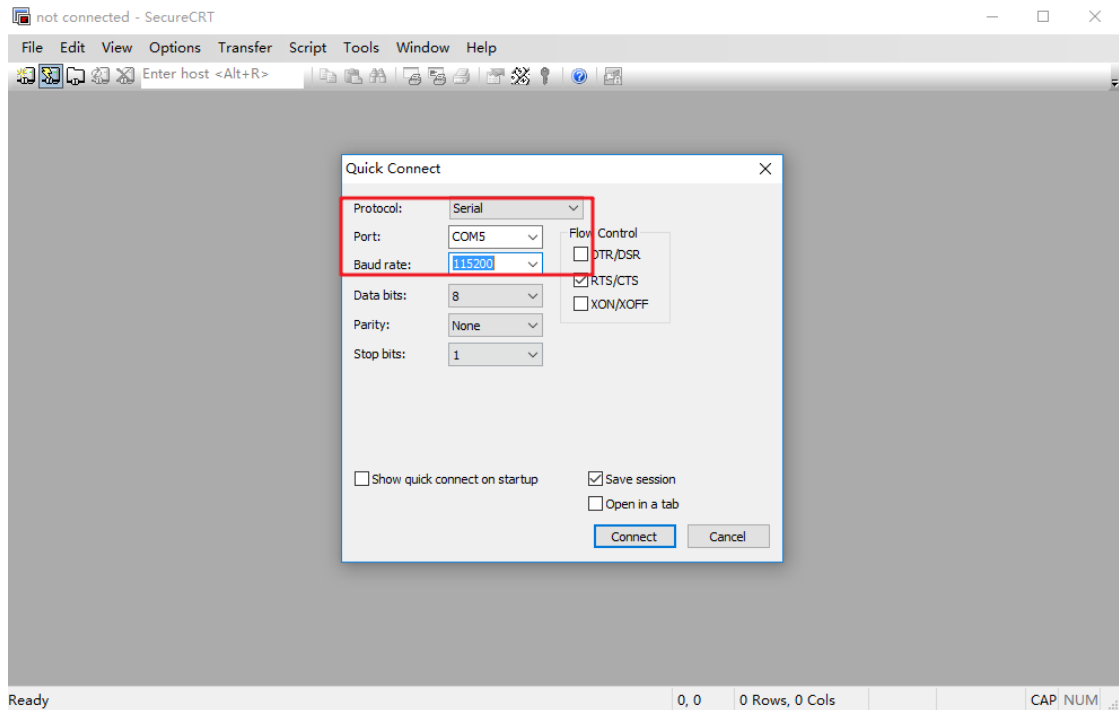


4. Open SecureCRT software and click **Quick Connect**

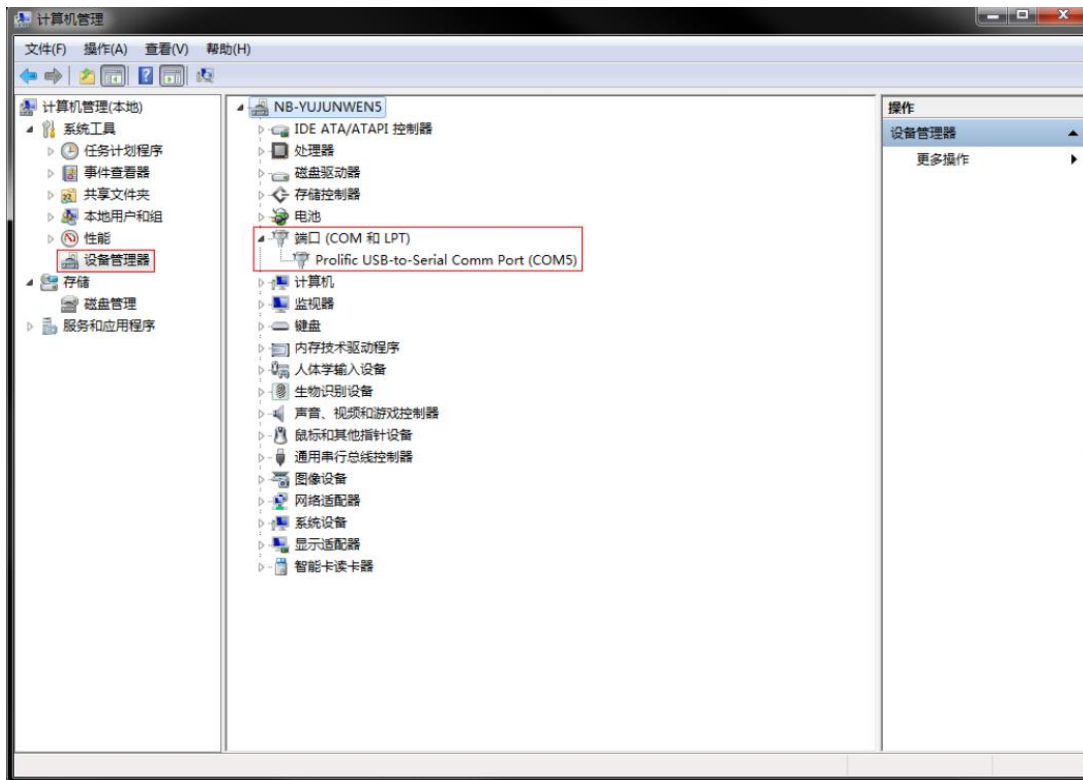


5. Configure Quick Connect and click connect.
 - a. Select Serial in Protocol
 - b. Select the port used by the serial port
(How to check your computer's port please refer to 6th step)
 - c. Select 115200 in Baud rateOther options remain default.

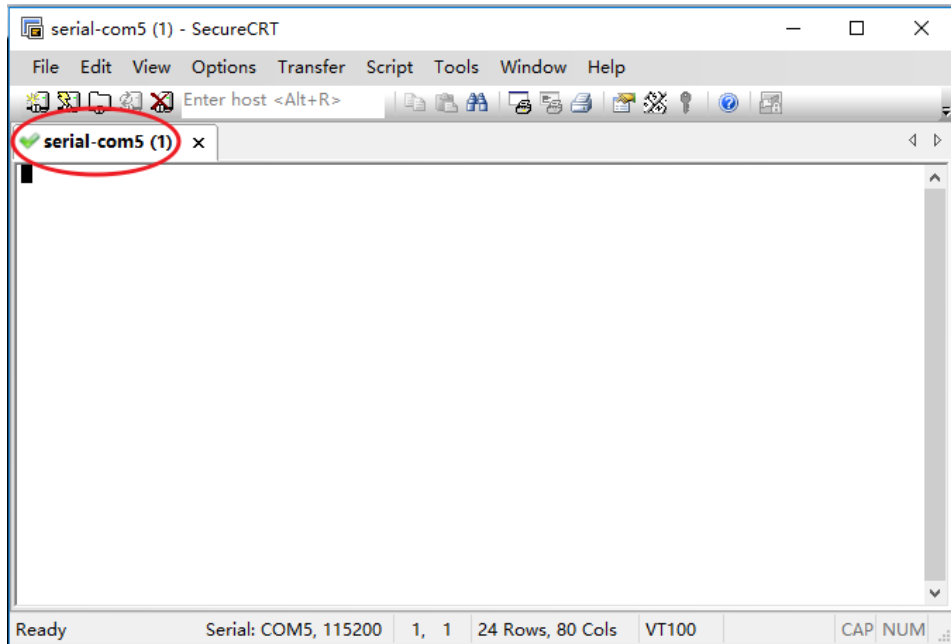




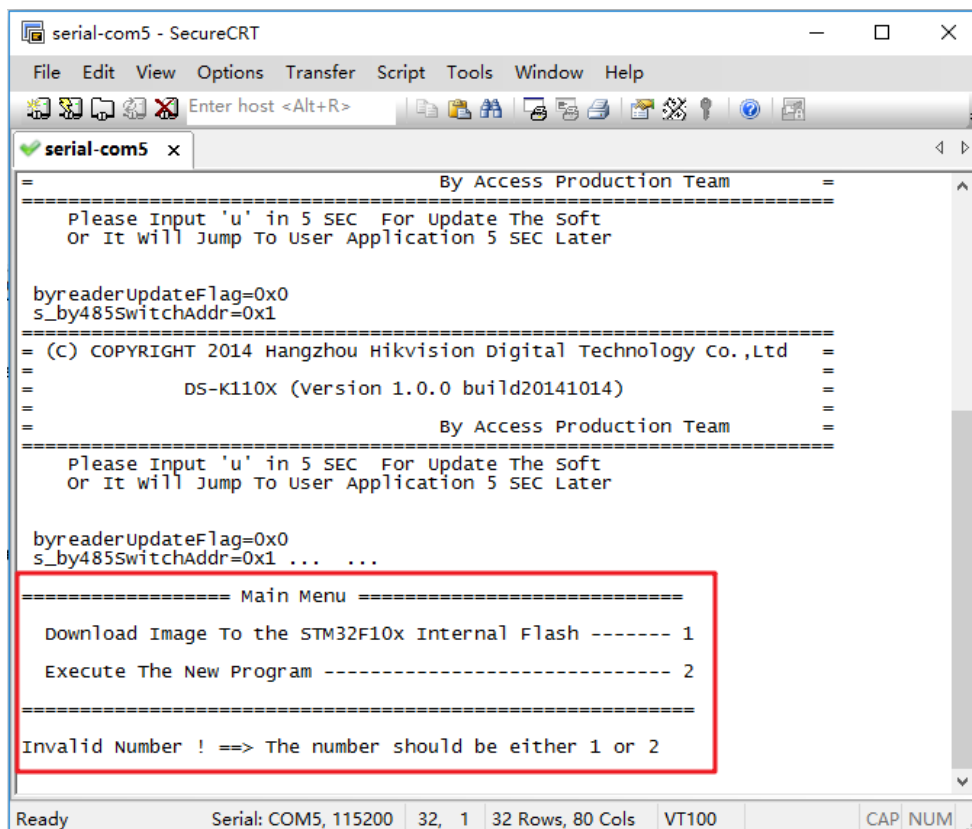
6. This section guide you how to check the serial port which is used to connect card reader. Click the computer icon on the desktop, right-click and select Manage, enter the following interface. Click, Device Manager, and then click the port to view. Here shows COM5, so we have to select com5 in front step.



- After step 5, click Connect to enter the following interface, if you see a green ✓ icon, it means connect successfully.

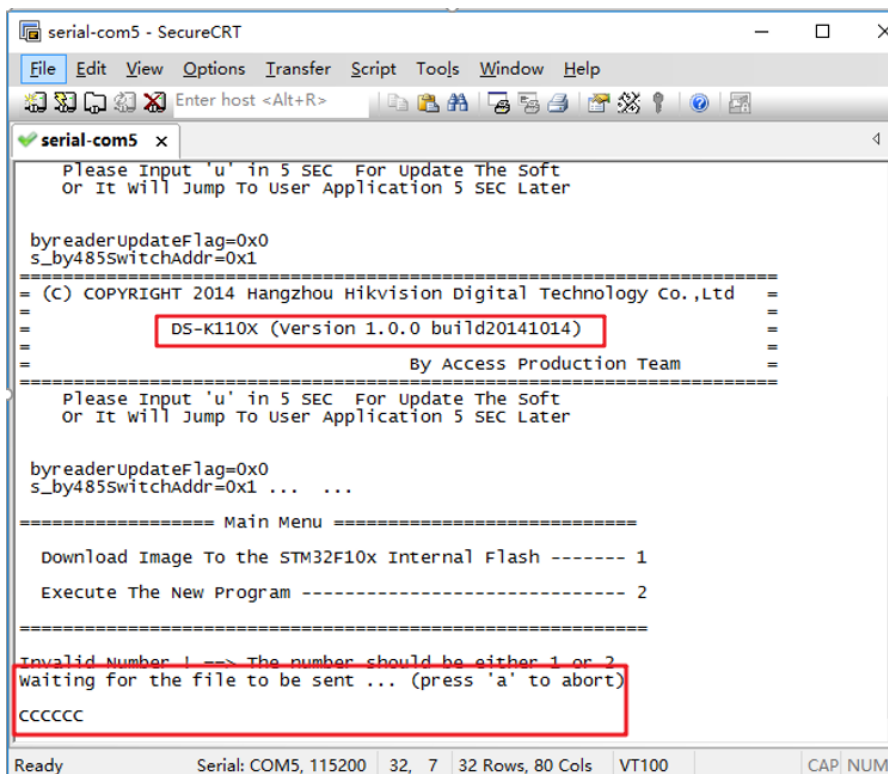


- Continuously press U on your PC keyboard, then switch on the access controller. Then you will find printed message in the box. After main menu is displayed, it means entered upgrade mode successfully, if not, please power off access controller then repeat this step again.

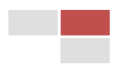
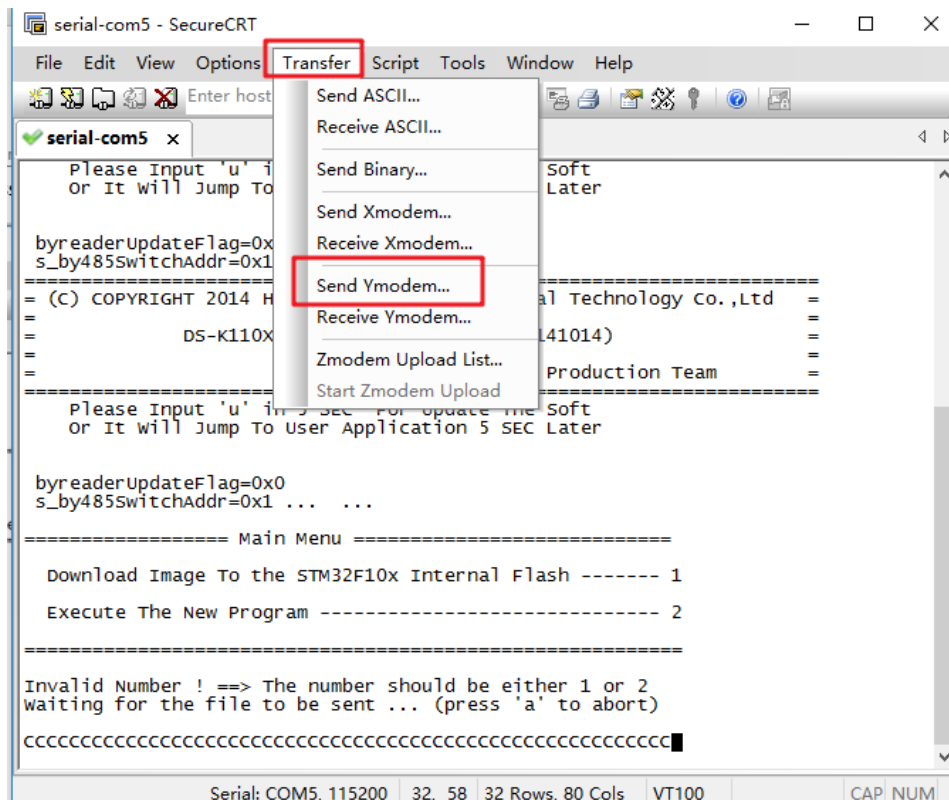


9. And we can find current reader firmware version is 1.0.0build20141014.

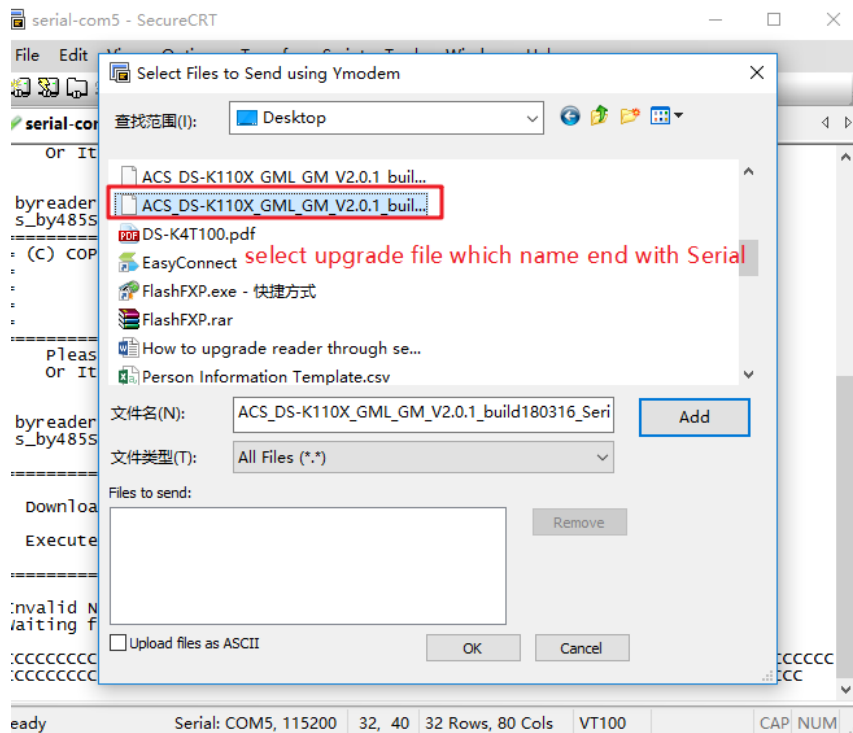
Input 1 and Enter key from keyboard, you will find below message



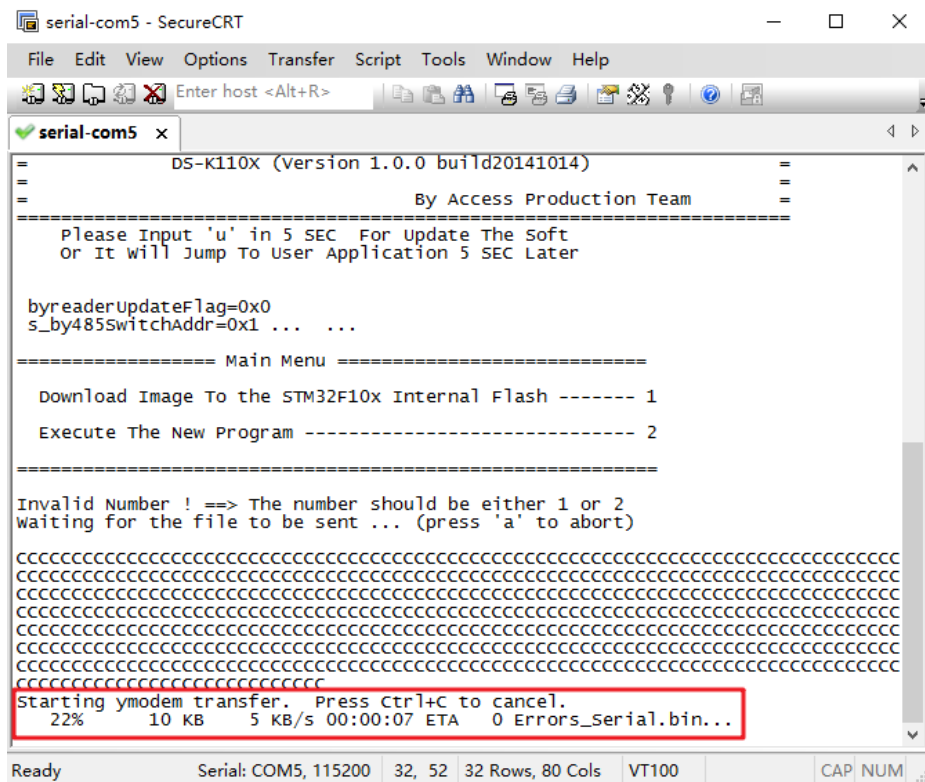
10. Select Transfer→Send Ymodem from menu



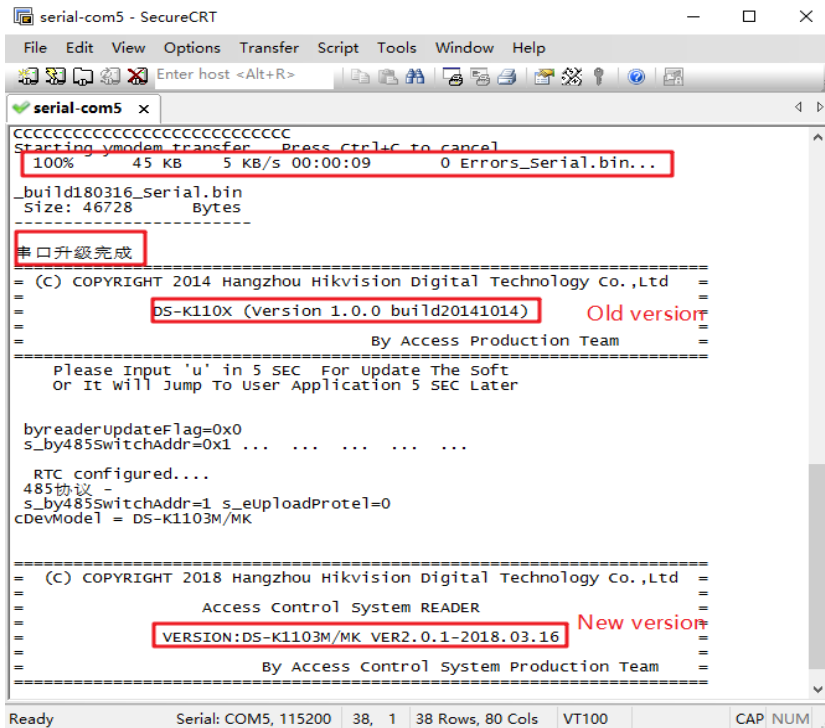
11. Select upgrade file, the file name should end with Serial.bin (for example ACS_DS-K110X_GML_GM_V2.0.1_build180316_Serial.bin), then click Add and OK



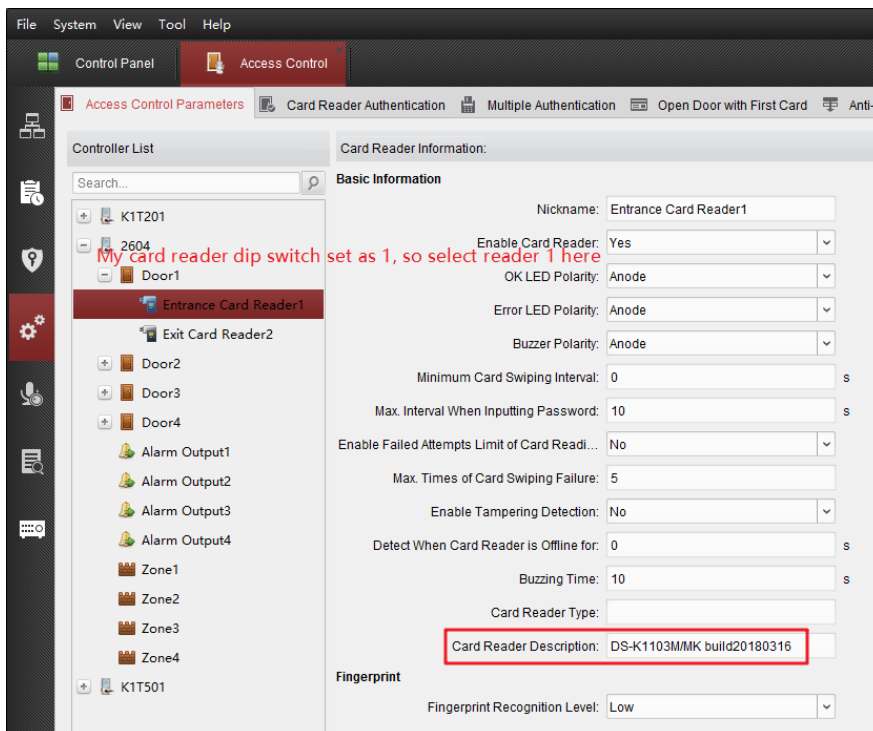
12. Then you will see below picture, the upgrade file will be send to reader. It will take about 5-10s to finish sending the file.



13. After upgrade successfully, the reader will give a beep sound and restart automatically. You can find old and new firmware version displayed in window.



14. After showing front picture, then restart access controller and double check reader firmware from 4200 software.



First Choice for Security Professionals
Hikvision Technical Support

