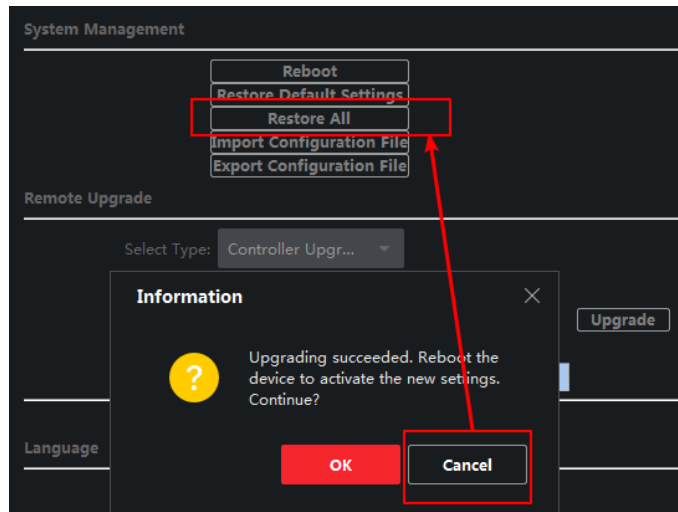


K1A802 Series Terminal V1.2.0_build190513 Release Note (2019-05-23)

Device Model: DS-K1A802F/MF/EF DS-K1A802F/MF/EF-B	Firmware Version	ARM: ACS_1A_M0_EN_GM_V1.2.0_build190513
	iVMS-4200 Client Version	V3.1 or updated version

Note:

1. After upgrade ARM firmware, **don't reboot device directly!** Choose restore all after upgrade. This is because new firmware's data structure is not compatible with old firmware. Rebooting directly will lead to device crash. It is recommend to upload all the old data to client software (iVMS4200) before upgrade, and apply all data to device again when upgrade finish.



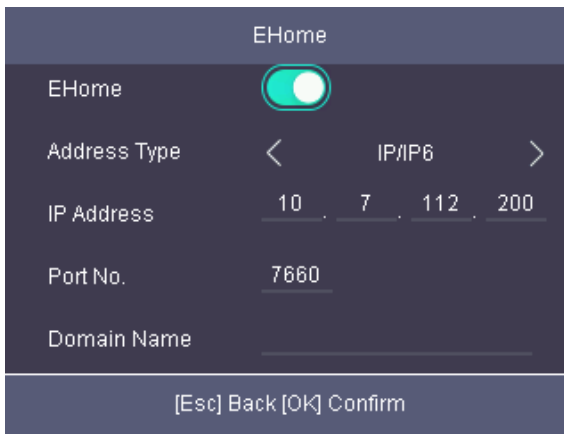
2. **DS-K1A802F/MF/EF-1** models are not compatible with this firmware.

Reason of Upgrade

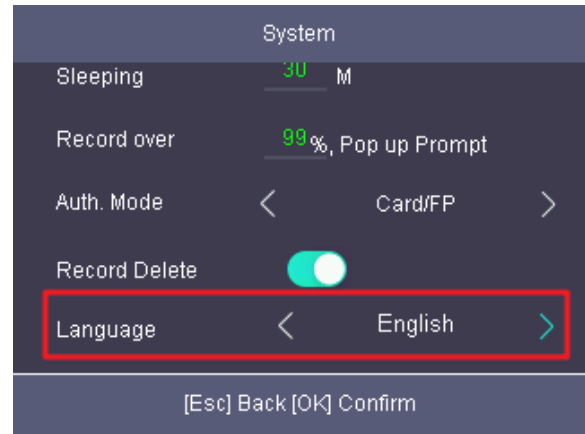
Add or modify functions, fix bugs, enhance products quality and meet customers' requirements.

New Features

1. Person information structure changes from "based on card" to "based on person ID";
2. Support a new authentication mode: card/fingerprint/password;
3. Support attendance status (check in/check out/break out/break in/overtime in/overtime out);
4. Basic settings will be saved automatically when you quit configuration menu. Some important configurations such as EHOME settings and restore device settings will still ask for confirmation before saving;
5. Support EHOME 4.0 and 5.0, can be configured in local interface or client software;
6. Multiple languages and voice prompts: English, Brazilian Portuguese, Spanish, French, Vietnamese, Italian, Arabic, Thai.



Local EHOME Setting



Multiple Languages

Customer Impact and Recommended Action

This new firmware upgrade is to improve product performance, and will take effect automatically after upgrading from previous versions. We'd like to inform you the above changes. Also, we are sorry for any possible inconvenience of use-habit changes caused by this action.

For questions or concerns, please contact our local technical support team.

Note:

- Hikvision has all rights to alter, modify and cancel this notice.
- Hikvision doesn't give any guarantee for old models' stock.
- Hikvision is not liable for any typing or printing errors.
- For special model's change details, please contact our local technical support team.

Hikvision Digital Technology CO., Ltd.
No. 555 Qianmo Road, Binjiang District, Hangzhou 310052,
China
Tel: +86-571-8807-5998
FAX: +86-571-8993-5635
Email: support@hikvision.com