

DeepinMind NVR V4.1.11 Build180414 Release Notes (2018-4-23)

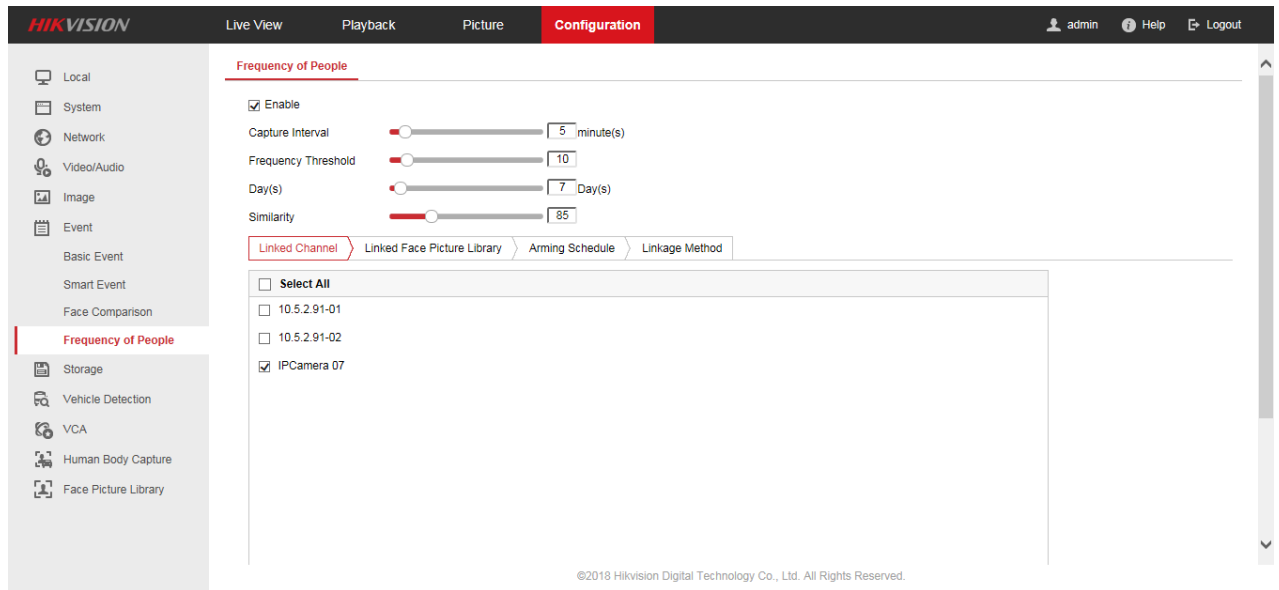
Firmware Basic Information	Firmware Version:	V4.1.11Build180414
	SDK Version:	V5.3.5.30
	Algorithm version	FR: V3.2.0
		HMS: V3.4.1
		Face capture algorithm library: V1.1.3
	TX1 version	FR: V1.2.2 Build180323
		HMS: V1.3.5 Build180412
	Play Library (PlayCtrl.dll)	7.3.3.65
Web version	V4.0.1 build 180327	
Client version	V2.6.5.106_Build20180407	

Reason of Upgrade

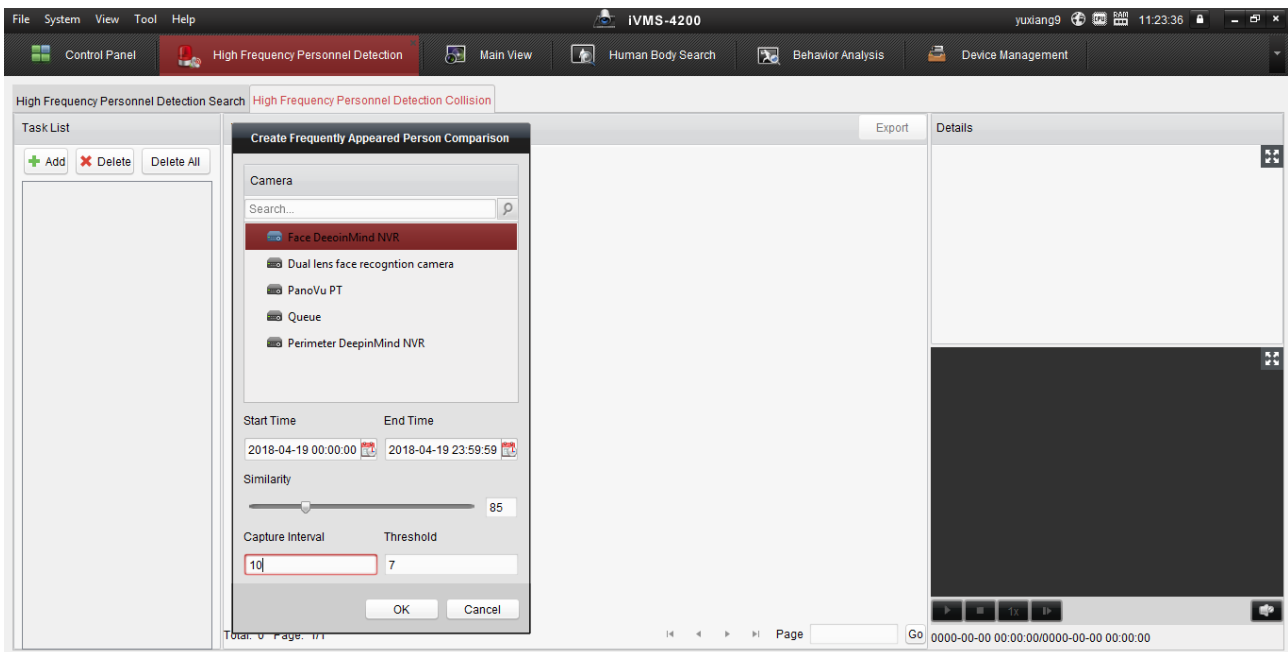
Add and modify some functions to enhance products quality and meet customers' requirements.

Main Features

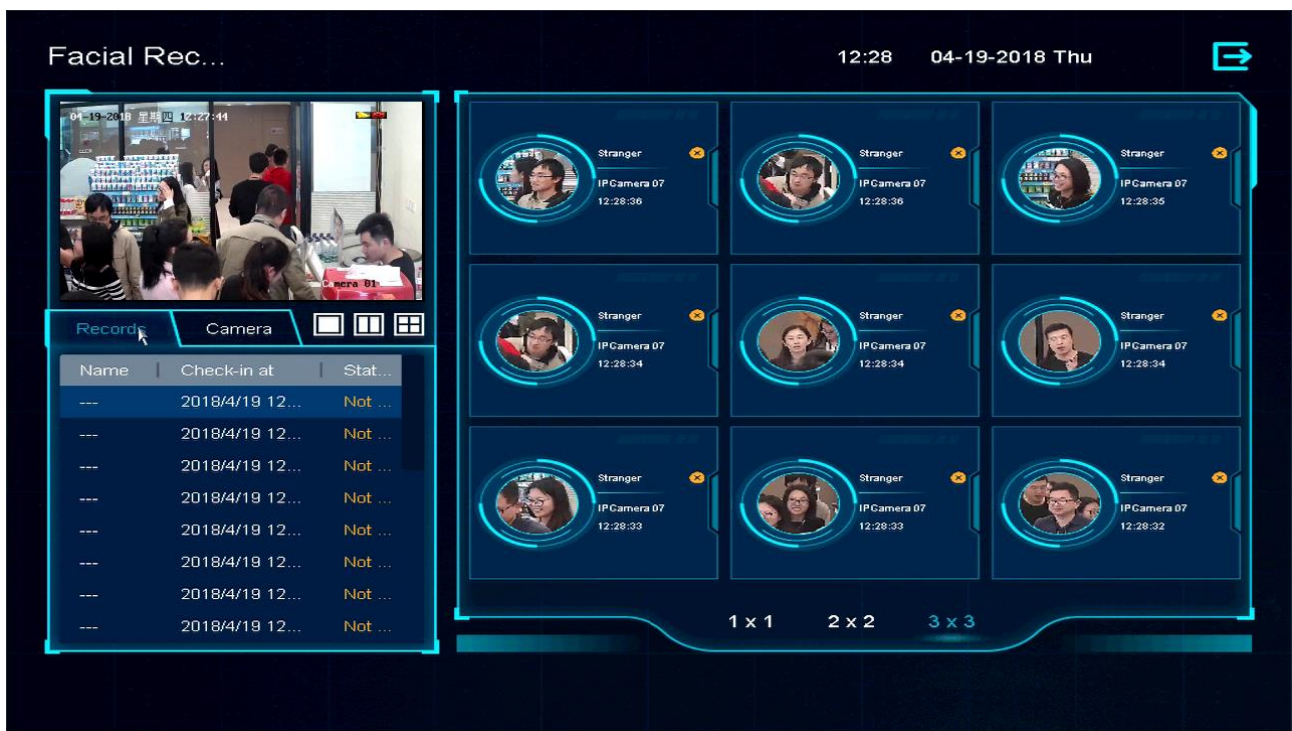
- i. Newly support enabling Face Comparison and Stranger Detection simultaneously in the same channel.
- ii. Face DeepinMind NVR newly support up to 16 face libraries and 100,000 face pictures in database totally. Super DeepinMind NVR newly support up to 32 face libraries and 300,000 face pictures in database totally.
- iii. Newly support BatchConfigTool to import face pictures and their attributes to face database in batch.
- iv. Super DeepinMind NVR newly support search face capture by appearances like gender, age and whether wear glassed etc.
- v. Face DeepinMind NVR and Super DeepinMind NVR newly support High Frequency Personnel Detection. When someone appear several times during a period of time, the real-time alarm will be triggered. This function only can be configured via web.



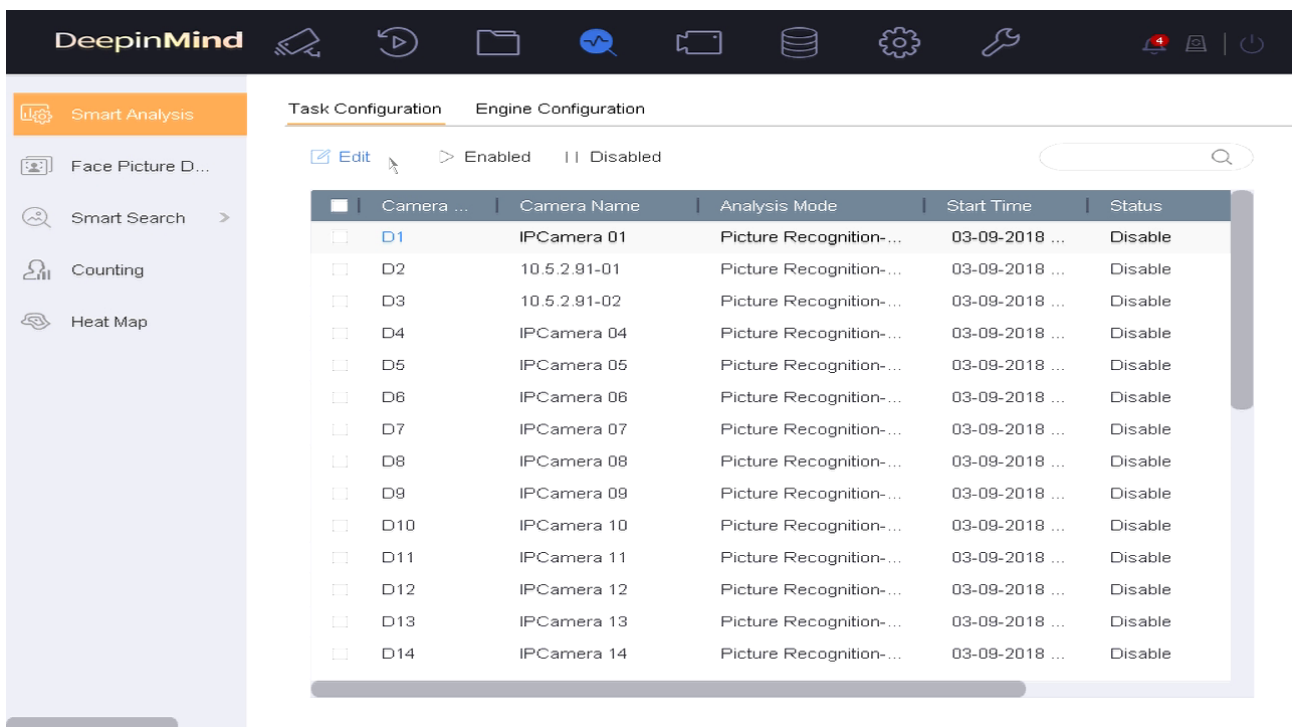
- vi. Face DeepinMind NVR and Super DeepinMind NVR newly support High Frequency Personnel Detection Collision. Like the High Frequency Personnel Detection, someone appeared several times during a period of time can be searched via iVMS-4200.



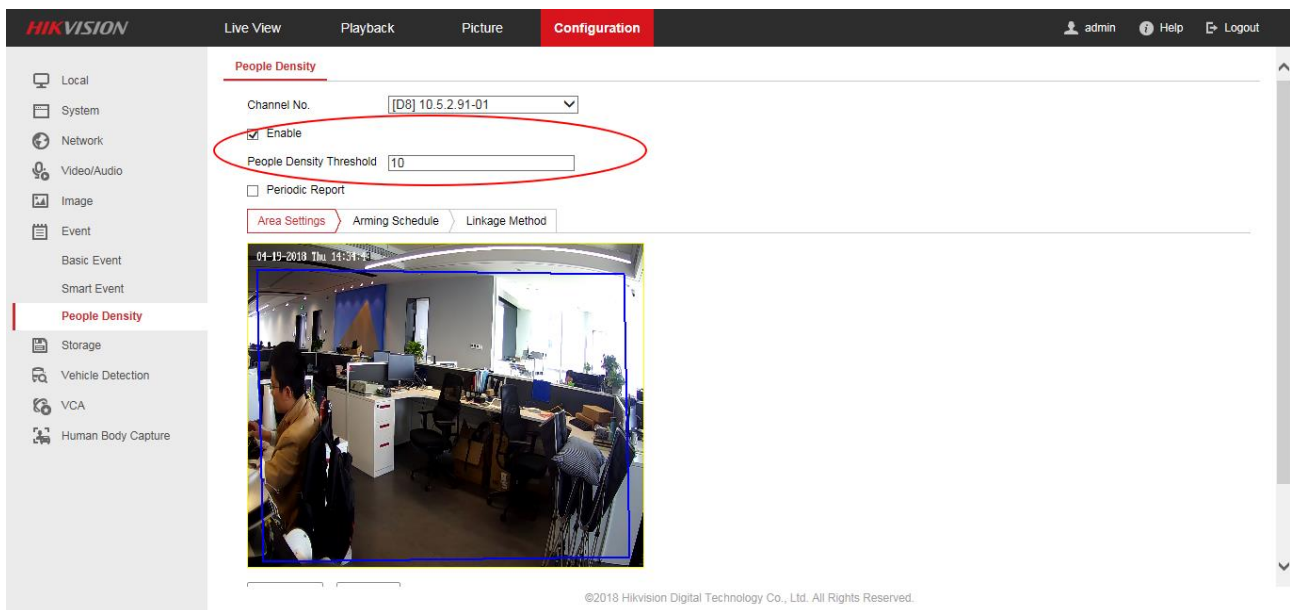
- vii. Face DeepinMind NVR and Super DeepinMind NVR newly support Face Recognition Check-in. The record of check-in can be displayed in GUI and exported via iVMS-4200.



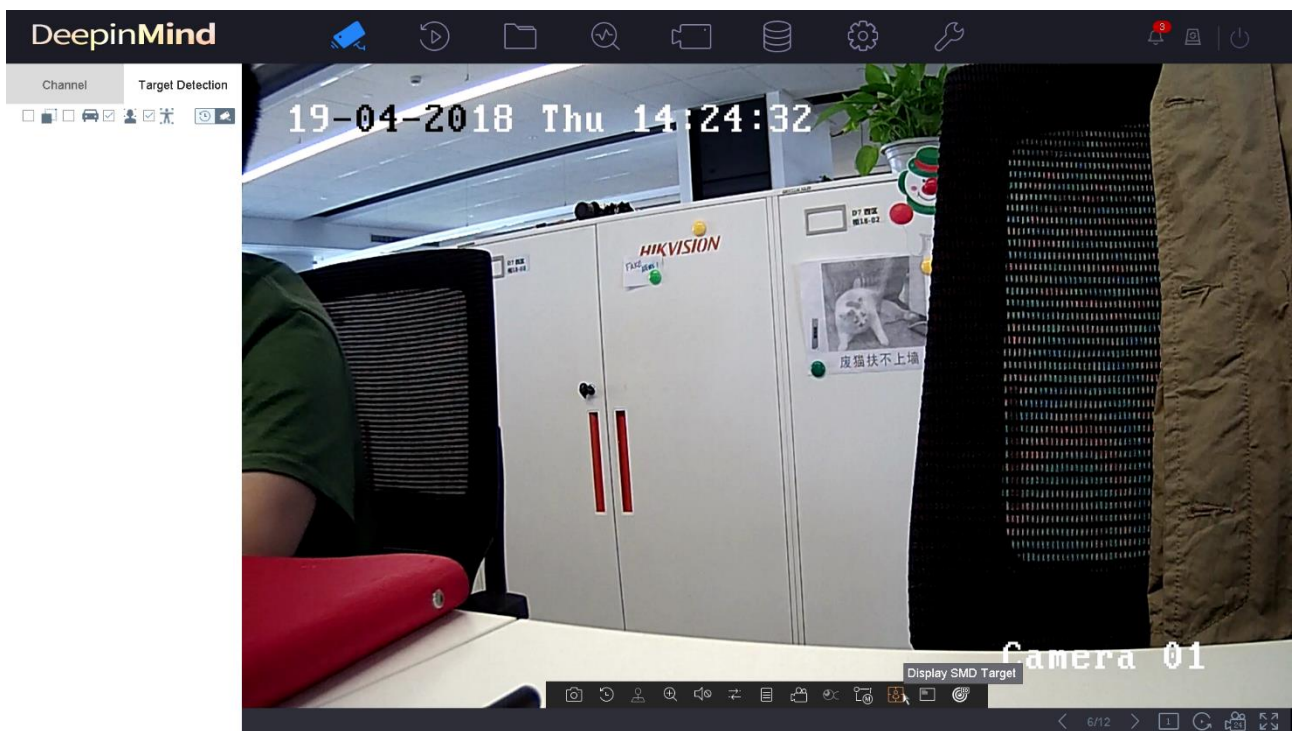
- viii. Face DeepinMind NVR and Super DeepinMind NVR newly support up to full-channel Picture Recognition. Picture Recognition can be enabled by channel, then the GPU will model the picture of this channel in idle time, which means search by picture and search by appearance can be supported for this channel.



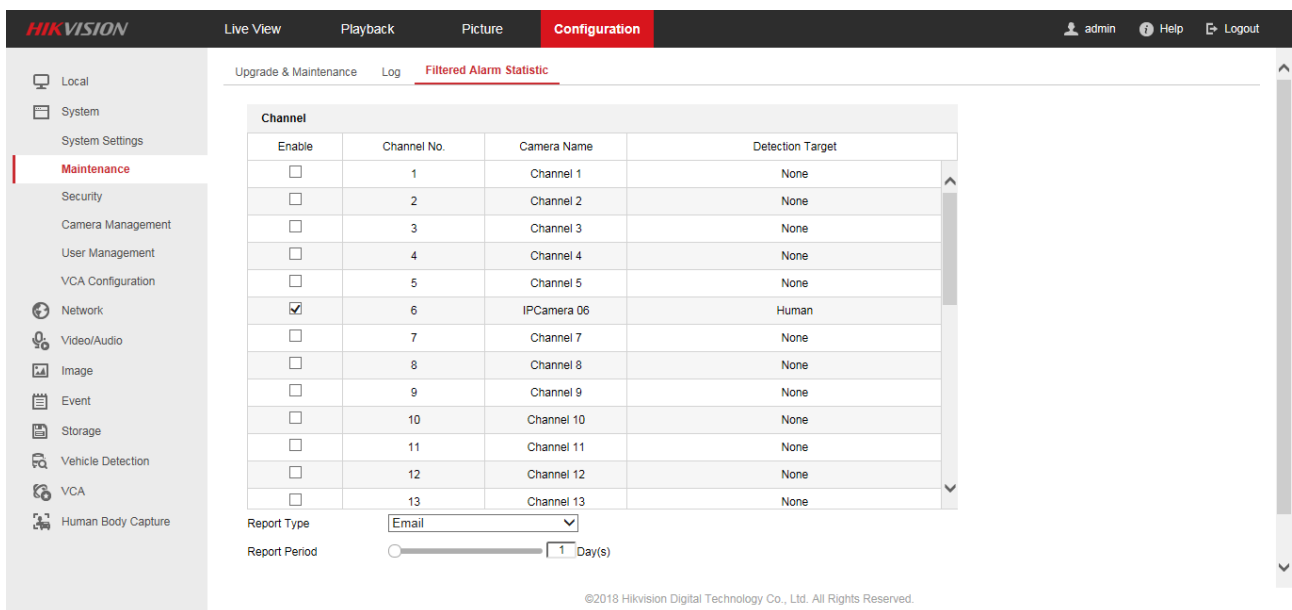
- ix. DeepinMind NVR newly supports 24MP panoramic camera access, sub-stream live view and playback while Super DeepinMind NVR newly supports 24MP panoramic camera access, main-stream live view and playback and 1+5 unwrapping when live view.
- x. Newly support adding channels from other NVR to get video stream.
- xi. Perimeter DeepinMind NVR newly supports People Density. When the number of people on the detection area is higher than the threshold you set, the real-time alarm will be triggered. The People Density will occupy the resource of false-alarm filtering and can't be enabled when the false-alarm filtering of the same channel is enabled.



- xii. Perimeter DeepinMind NVR newly supports 1-channel SMD rule overlapping in live view in GUI.



- xiii. Perimeter DeepinMind NVR and Super DeepinMind NVR newly support sending email of Filtered Alarm Statistic.



- xiv. DeepinMind NVS newly supports VGA and HDMI output and USB interface.
- xv. Newly support multilingual firmware.

Related product list:

DeepinMind NVR	iDS-6704NXI-I/4F
	iDS-6716NXI-I/16S
	iDS-7700NXI-I4(/16P)/8S
	iDS-9600NXI-I8/4F
	iDS-9600NXI-I8/16S

Customer Impact and Recommended Action

This new firmware upgrade is to improve product performance, and will take effect automatically after upgrading from previous versions. We'd like to inform you the above changes. Also, we are sorry for any possible inconvenience of use-habit changes caused by this action.

For questions or concerns, please contact our local technical support team.

Note:

- Hikvision has all rights to alter, modify and cancel this notice.
- Hikvision doesn't give any guarantee for old models' stock.
- Hikvision is not liable for any typing or printing errors.
- For special model's change details, please contact our local technical support team.

Hikvision Digital Technology CO., Ltd.
No. 555 Qianmo Road, Binjiang District, Hangzhou 310052, China
Tel: +86-571-8807-5998
FAX: +86-571-8993-5635
Email: support@hikvision.com