

## How to use heat map via iVMS-4200

### [Preparation]

1. iVMS-4200(V2.3.0.4 or above) client + storage server
2. DS-2CD6362/6332FWD fisheye camera(V5.0.9 141009 or above)

### [Step]

1. Add fisheye camera and storage server into iVMS-4200;
2. Enable heat map  Heat map , then draw heat map area, set related parameters&arming schedule, click

button;

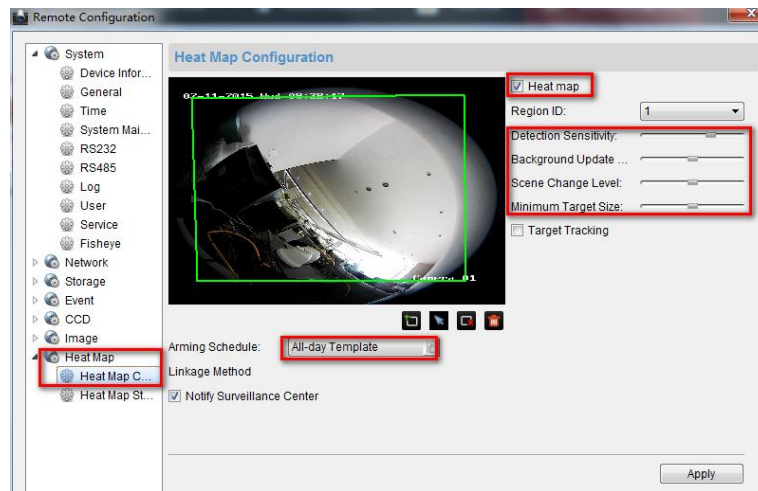



Figure-1 Heat Map Configuration

3. Format HDD, then configure quota in storage server remote configuration or right click on storage server

icon  ; quota ratio for additional information includes heat map and people counting quota;

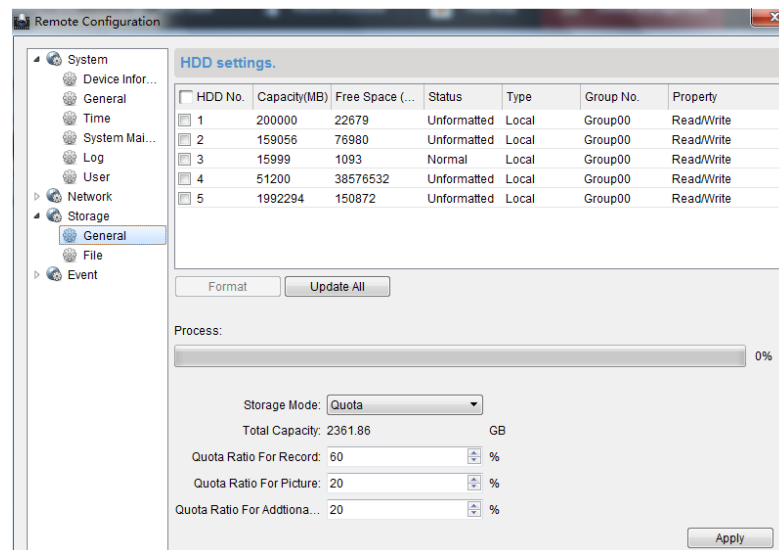


Figure-2 Storage Server Remote Configuration

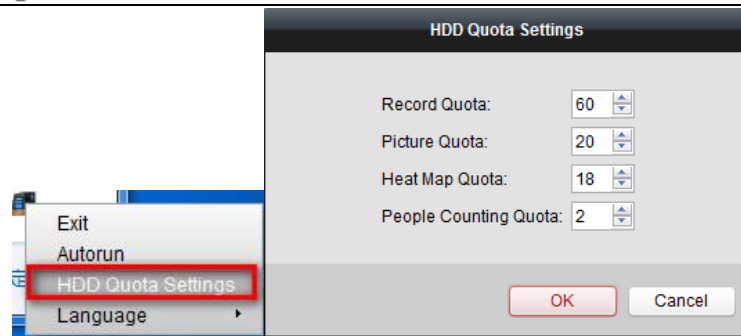


Figure-3 HDD Quota Settings

4. Configure record schedule on fisheye channel. Additional Information Storage must be selected;

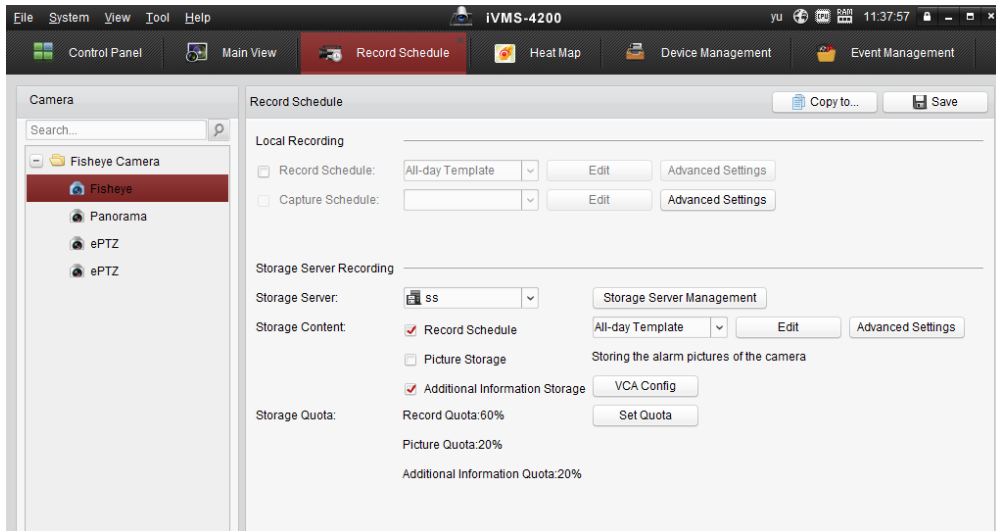


Figure-4 Record Schedule

5. After 30min, you can generate heat map result via line chart or picture mode on fisheye channel.

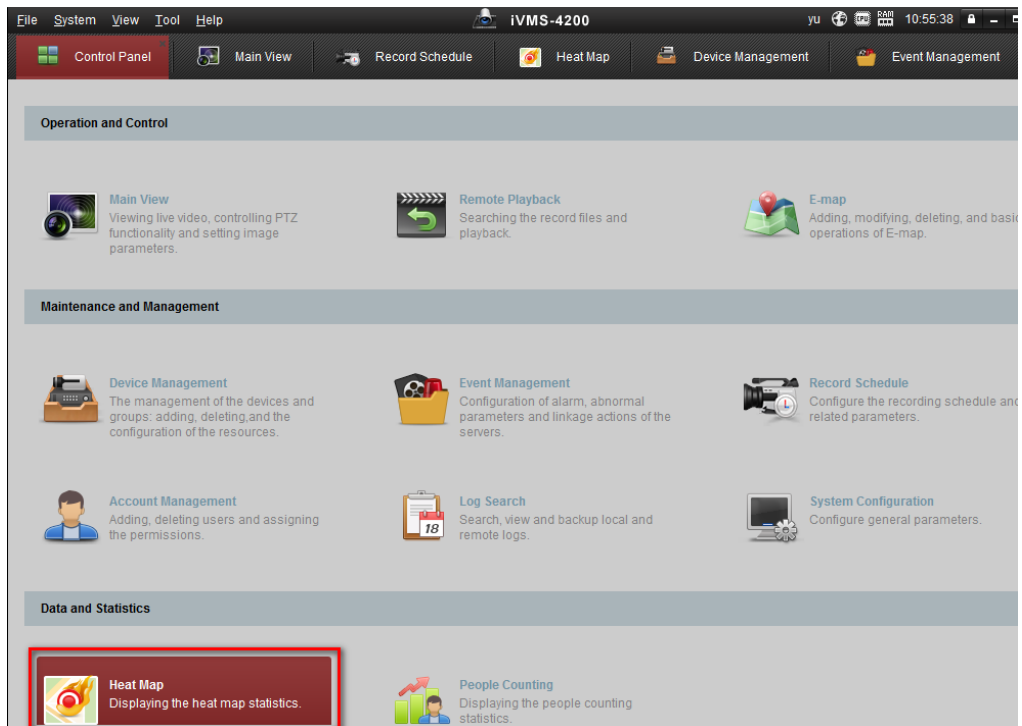
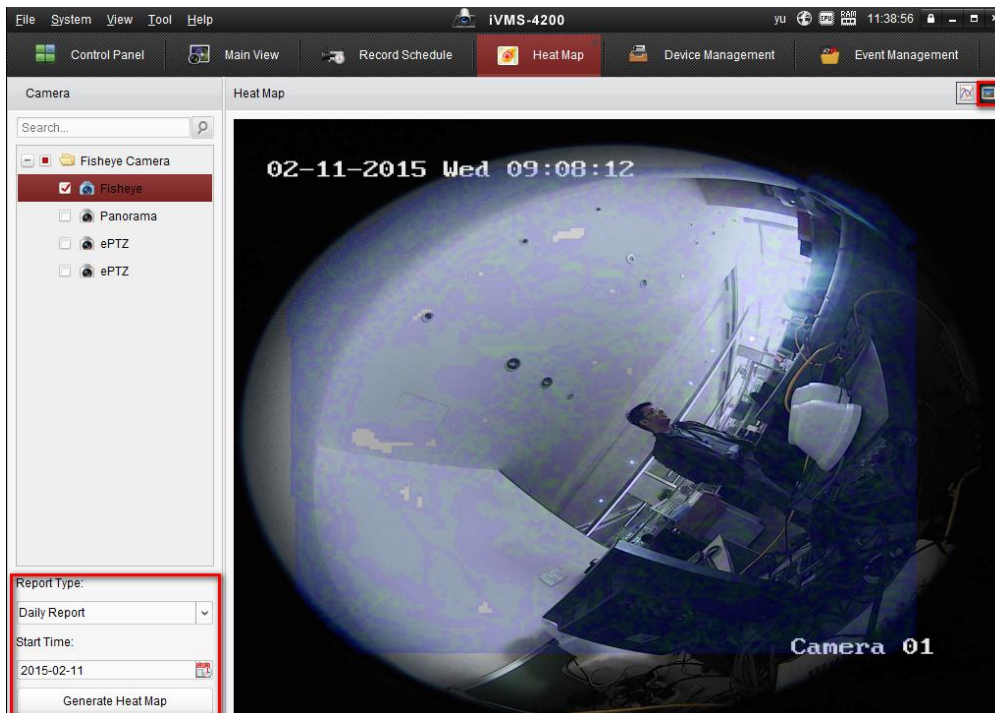
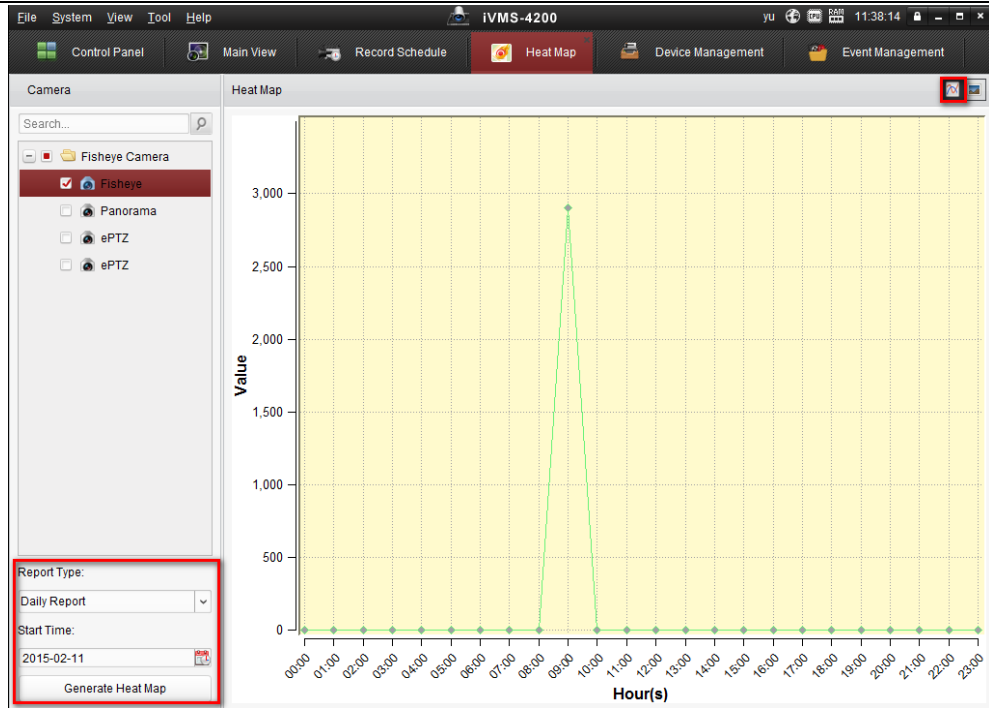


Figure-5 Heat Map in Control Panel



## [Note]

1. The 63 series fisheye cameras don't need micro SD card;
2. The heat map result can not be exported in this client version;