

## Turbo HD DVR V3.5.0\_Build170406 Release Notes (2017-05-10)

<b>Firmware Basic Information</b>	Firmware Version:	v3.5.0_Build170406
	SDK Version:	V5.2.5.15 build20160906
	Play Library (PlayCtrl.dll)	7.3.2.0
	player	4.8mini
	Web version	V4.0.1 build 170401
	Client version	V2.5.8.1 build20170309

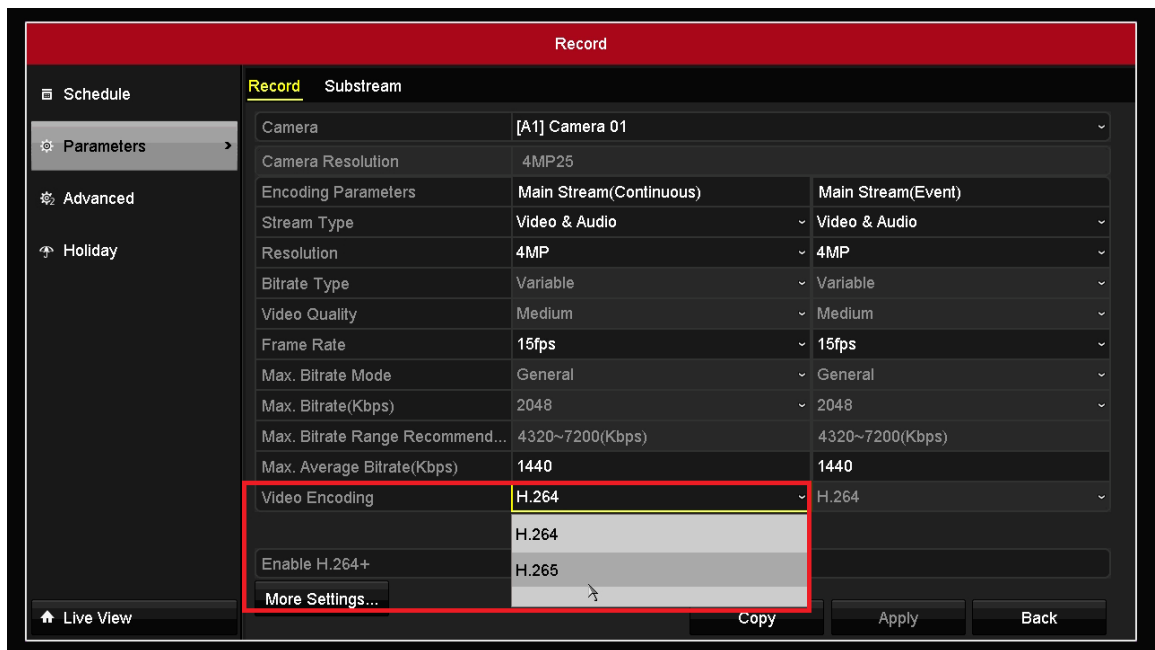
### Reason of Upgrade

Newly release Turbo 4.0 DVR. Released K series DVR: DS-7208HUHI-K1, DS-7208HUHI-K2, DS-7216HUHI-K2.

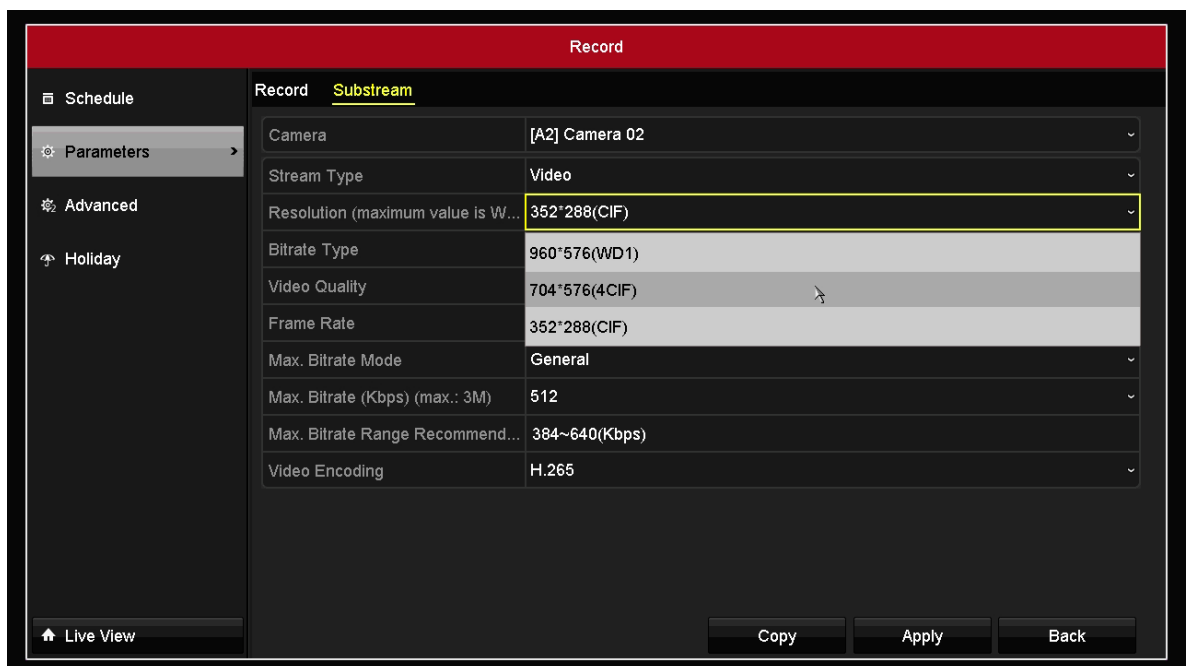
Newly support H265/H265+ codec technology, newly support 8TB HDD. This version is only suitable for DS-7208HUHI-K1, DS-7208HUHI-K2, DS-7216HUHI-K2. Add some new functions, modify some functions, enhance products quality and meet customers' requirements.

### Main Features

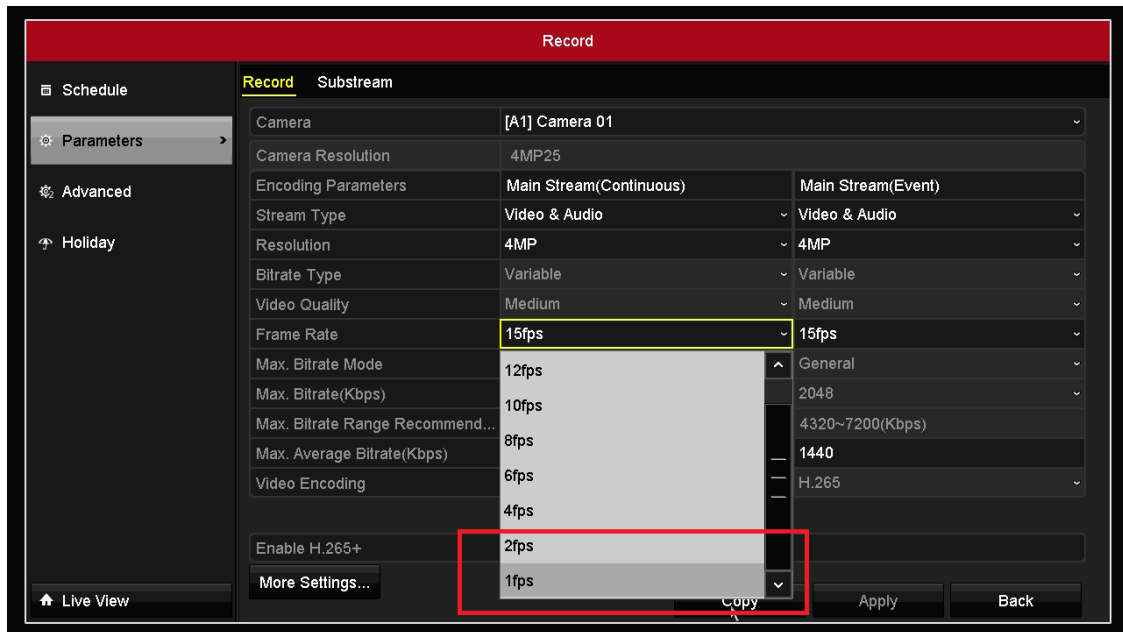
- i. Newly release K series DVR:
  - 1) Released models: DS-7208HUHI-K1, DS-7208HUHI-K2, DS-7216HUHI-K2.
  - 2) Newly support H265/H265+ codec technology, which is more efficient than H264 in video coding compression.
- ii. Encoding capacity
  - 1) Support H265 encoding and decoding for **Analog Channel**. Main stream support H265/h265+/h264/h264+ encoding type, while sub stream support h265/h264 encoding type. Encoding type can be switched via **Record->Parameters->Video Encoding** on local menu.



- 2) Support h265/h265+ video stream playback, while reverse playback is not supported for h265+/h264+ video stream.
- 3) Support up to WD1 real-time recording for sub stream which used to be up to WD1@12fps.
- 4) QVGA & QCIF recording resolution is no more supported for sub stream.

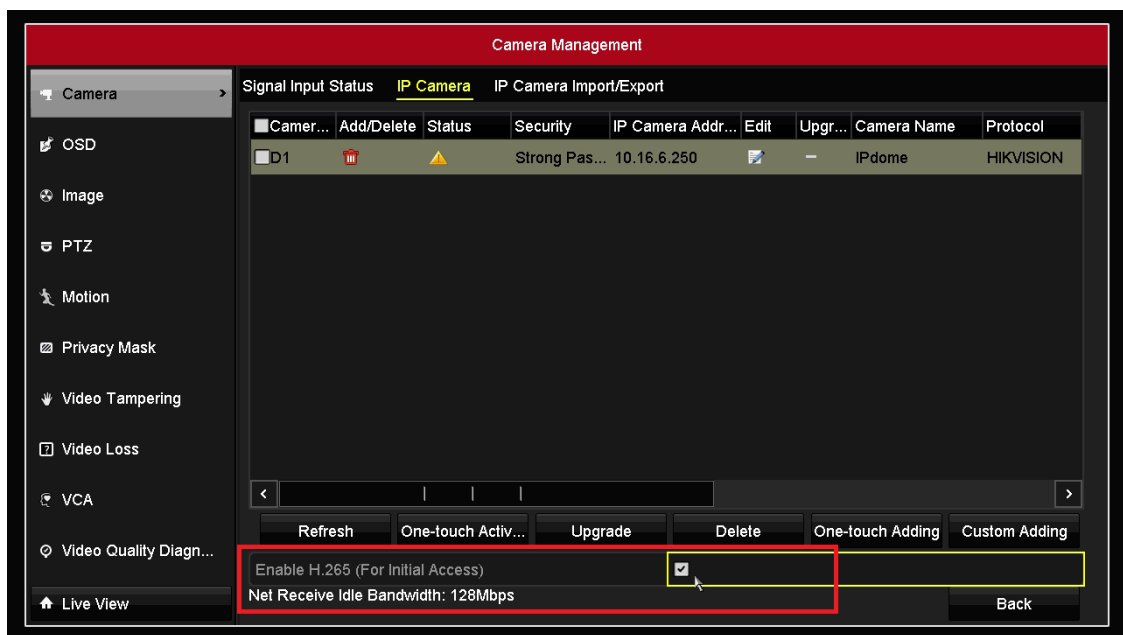


- 5) The lowest recording frame rate is changed as 1fps. 1/16,1/8,1/2 fps is no more supported for main stream, sub stream and zero channel encoding.



### iii. IPC access.

1. Support H265 encoding video stream IPC access.



2. Support 2 channels up to 6MP IPC access.

### iv. Newly support 8TB HDDs. Supported model: ST8000VX0002,ST8000NM0055

### v. Newly support **Synchronous Playback** on webpage of device.

- 1) Newly add switch button of **Synchronous Playback/Asynchronous Playback**.
- 2) Support 16 channels synchronous playback as default. Device will automatically switch the split screens according to the number of selected channels



- vi. Main CVBS scaling function is no more supported.
- vii. Live view of IP channel is no more supported on CVBS output of DVR
- viii. When switching the split screens of live view web page of DVR to 9/16, the live view stream will be switched to sub stream automatically.

## **Related product list:**

K Series Turbo HD DVR	DS-7208HUHI-K1, DS-7208HUHI-K2, DS-7216HUHI-K2
--------------------------	--

## **Customer Impact and Recommended Action**

This new firmware upgrade is to improve product performance, and will take effect automatically after upgrading from previous versions. We'd like to inform you the above changes. Also, we are sorry for any possible inconvenience of use-habit changes caused by this action.

For questions or concerns, please contact our local technical support team.

### Note:

- Hikvision has all rights to alter, modify and cancel this notice.
- Hikvision doesn't give any guarantee for old models' stock.
- Hikvision is not liable for any typing or printing errors.
- For special model's change details, please contact our local technical support team.

Hikvision Digital Technology CO., Ltd.  
No. 555 Qianmo Road, Binjiang District, Hangzhou 310052, China  
Tel: +86-571-8807-5998  
FAX: +86-571-8993-5635  
Email: support@hikvision.com