



EUROPEAN TECHNICAL CENTER

UPGRADE GUIDE

Title:	How to Upgrade D8E series Card Enrollment Station	Version:	v1.0	Date:	12/10/2017
Product:	Access Control Device	Page:	1 of 4		

How to Upgrade D8E series Card Enrollment Station

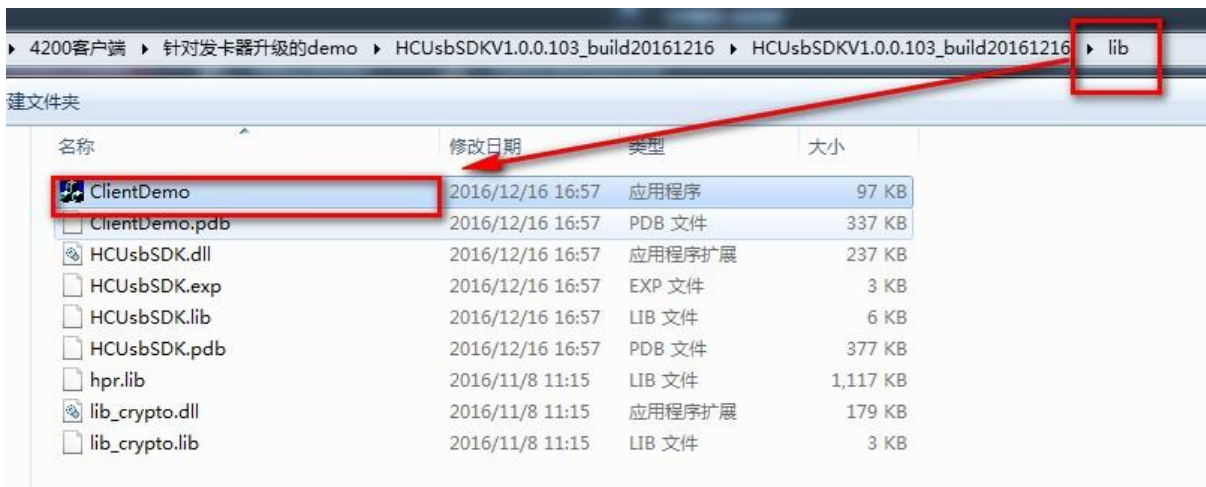
Preparation

This document describes the upgrading process of card enrollment stations DS-K1F100-D8E and DS-K1F180-D8E;

Make sure you have already V2.1.0 firmware and USB Demo utility for card enrollment station.

Step 1:

Unzip the package, enter **lib** folder, and double-click to run **ClientDemo** executable;



Step 2:

Connect the D8E series card enrollment station by USB and the utility will detect it. Select your device and click **Enum Hid**, the result in the info log should be 'SUCCESS USB_SDK_EnumDevice()';

The screenshot shows the 'USB Demo' application window. It includes a 'Version' section (build 20171207, Version: HCUsbSDK V1.0.1.102) and a 'Login Info' section (User: admin, PW: *****). The 'Device Info' section contains a table with two devices:

Index	VID	PID	Manufacturer	Device Name	Device Serial No
1	0x0483	0x5750	HIKVISION	DS-K1F100-D8E	709330811
2	0x17EF	0x600E	PixArt	Lenovo USB Optical Mo...	

Below the table, the selected device's details are shown: Name: DS-K1F100-D8E, Serial: 709330811. To the right of the table are buttons for 'Enum Hid', 'Login Device', 'Logout Device', and 'Set User Data'. The 'Enum Hid' button is highlighted with a red box, and a red arrow points from it to the log output.

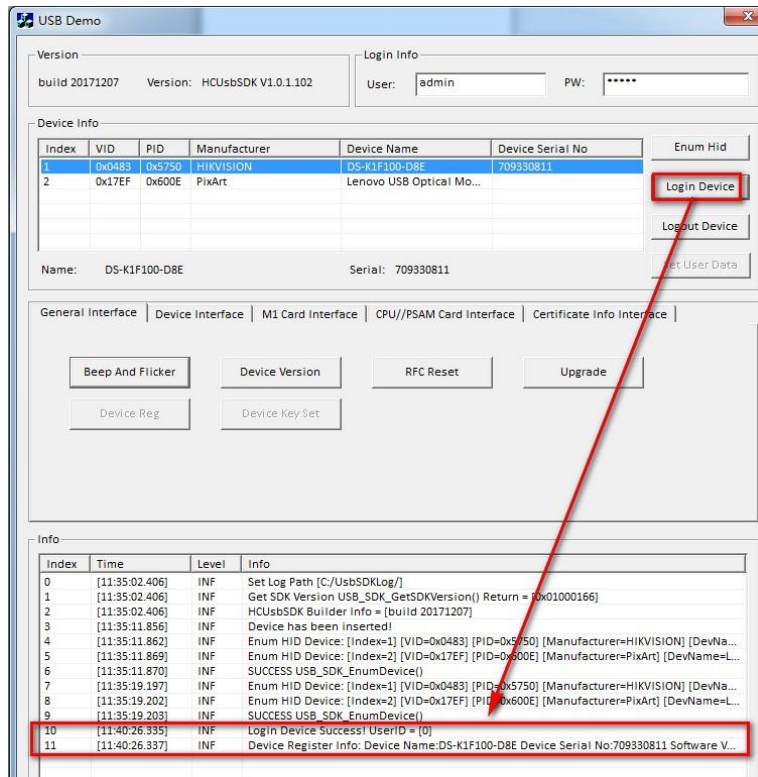
The 'Info' section at the bottom shows a log of events:

Index	Time	Level	Info
0	[11:35:02.406]	INF	Set Log Path [C:/UsbSDKLog/]
1	[11:35:02.406]	INF	Get SDK Version USB_SDK_GetSDKVersion() Return = [0x01000166]
2	[11:35:02.406]	INF	HCUsbSDK Builder Info = [build 20171207]
3	[11:35:11.856]	INF	Device has been inserted!
4	[11:35:11.862]	INF	Enum HID Device: [Index=1] [VID=0x0483] [PID=0x5750] [Manufacturer=HIKVISION] [DevNa...
5	[11:35:11.869]	INF	Enum HID Device: [Index=2] [VID=0x17EF] [PID=0x600E] [Manufacturer=PixArt] [DevName=L...
6	[11:35:11.870]	INF	SUCCESS USB_SDK_EnumDevice()
7	[11:35:19.197]	INF	Enum HID Device: [Index=1] [VID=0x0483] [PID=0x5750] [Manufacturer=HIKVISION] [DevNa...
8	[11:35:19.202]	INF	Enum HID Device: [Index=2] [VID=0x17EF] [PID=0x600E] [Manufacturer=PixArt] [DevName=L...
9	[11:35:19.203]	INF	SUCCESS USB_SDK_EnumDevice()

The log entry at index 9 is highlighted with a red box, indicating the successful completion of the 'Enum Hid' operation.

Step 3:

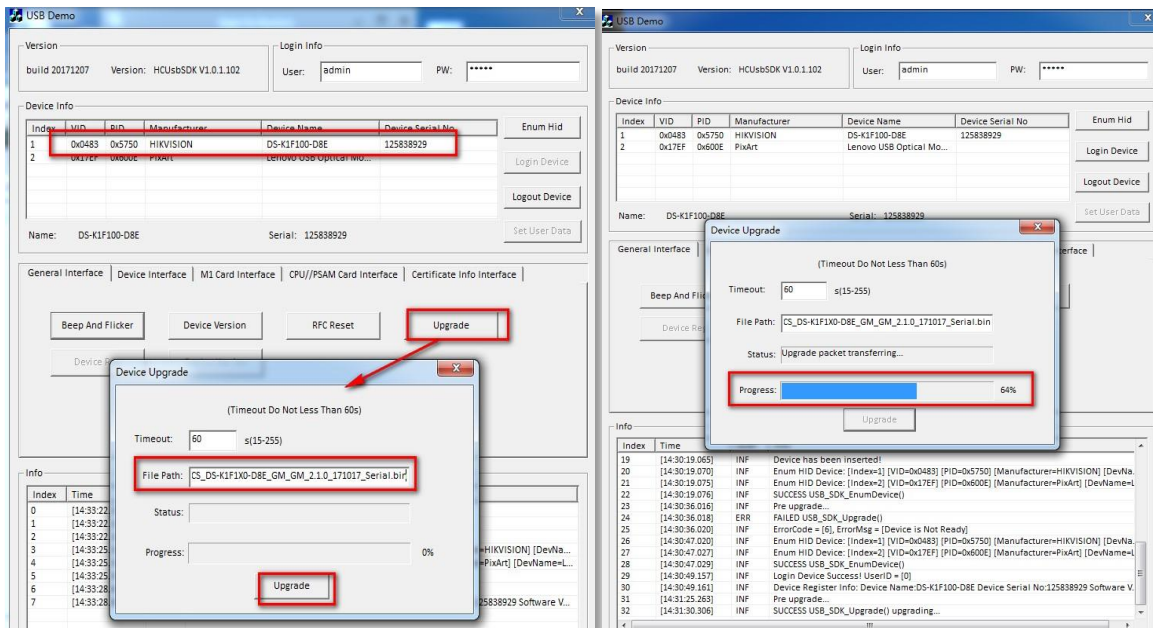
Select your device and click **Login Device**, the result in the info log should be 'Login Device Success!';



Step 4:

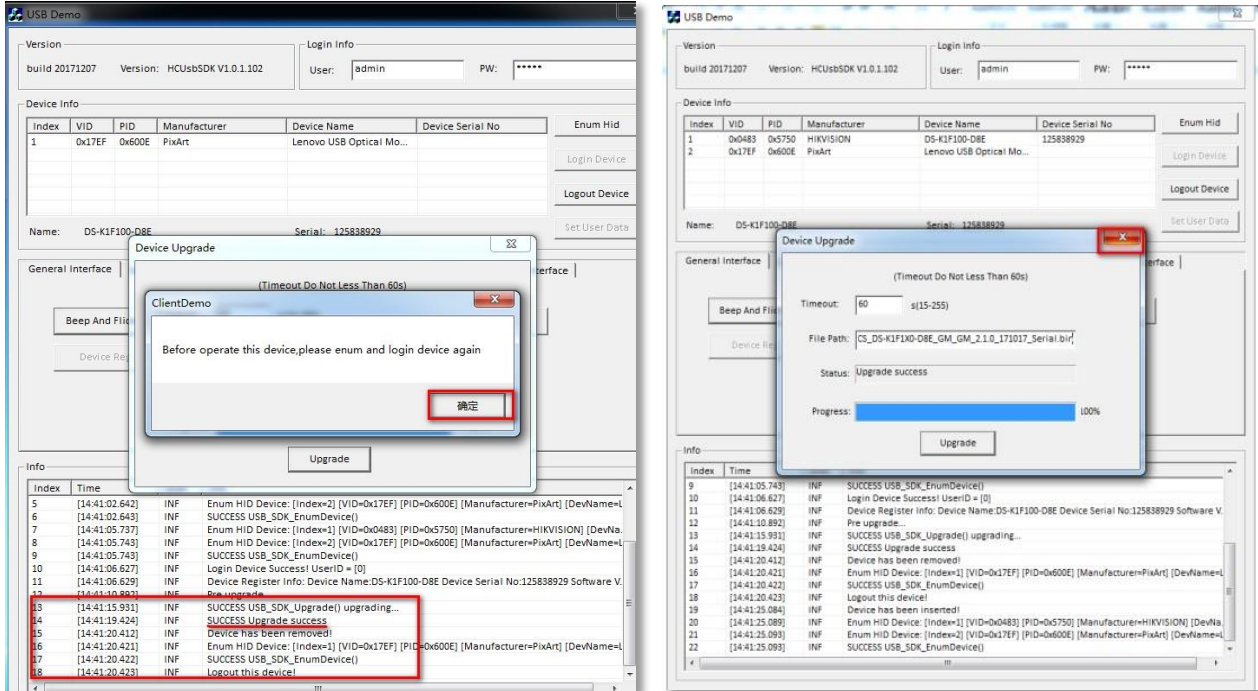
Select your device and click **Upgrade**, you will enter Device Upgrade interface;

Copy your firmware path to 'File Path', and click **Upgrade**;



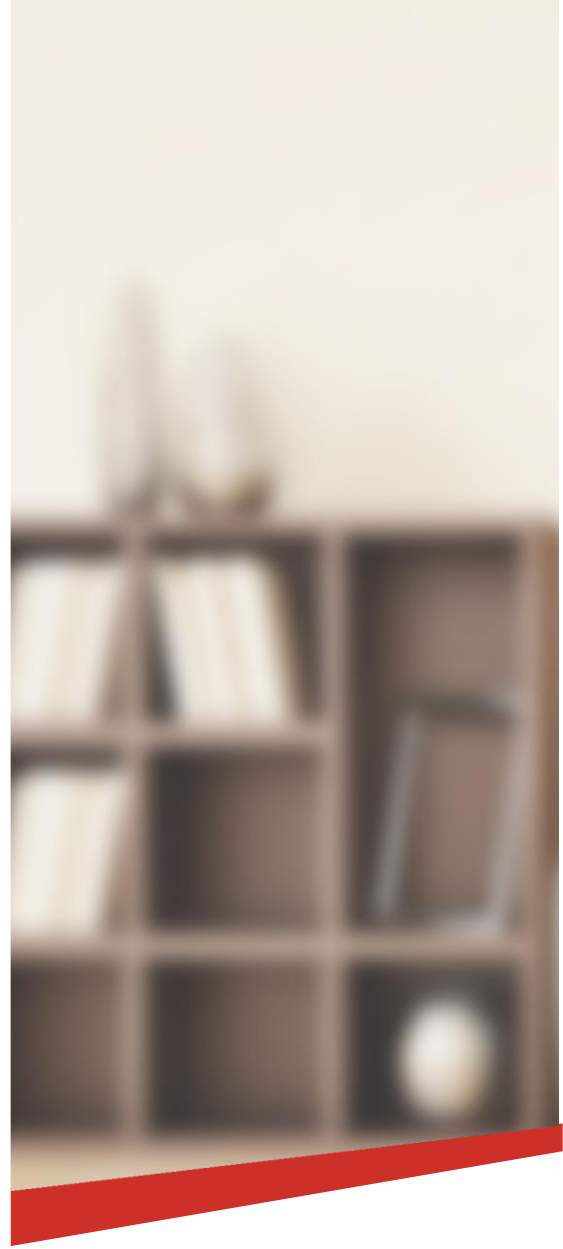
Step 5:

After the upgrade is finished, you will see 'SUCCESS Upgrade success'. Close the all opened windows and the utility.



Step 6:

Unplug the device and run iVMS-4200 client, connect your card enrollment station to the computer by USB. Now you can use it to issue cards.



Note:

1. Hikvision has all rights to alter, modify and cancel this notice.
2. Hikvision doesn't give any guarantee for old models' stock.
3. Hikvision is not liable for any typing or printing errors.
4. For special model's change details, please contact our local technical support team.

Hikvision Digital Technology CO., Ltd.
No. 555 Qianmo Road, Binjiang District, Hangzhou
310052, China
Tel: +86-571-8807-5998
FAX: +86-571-8993-5635