



RAM II Exporter


1.0 Introduction

 Install and operate the RAM II Exporter according to these instructions. Bosch Security Systems, Inc. (Bosch) is not responsible for improperly installed, operated or maintained software applications or devices.

 Ram II Exporter Version 00A for the D4112/D6112 and Version 004 for all other RAM II control panels are supported. Older versions of the RAM II exporter are no longer supported.

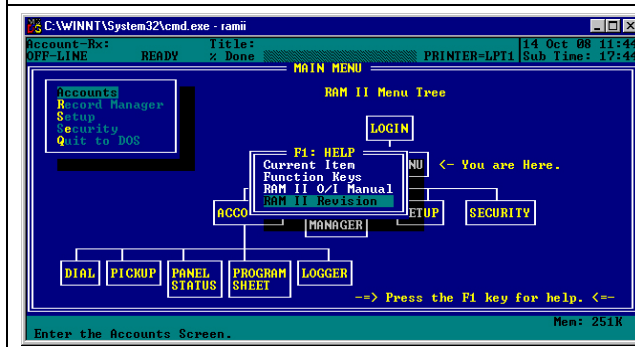
You cannot run the RAM II Exporter and RAM II at the same time.

If RPS shows multiple duplicate files after importing, restart RPS to fix this problem.

 Before Installing RAM II Exporter Version 00A or 004, verify that Version 05.30, dated 04 January 2000, is installed.

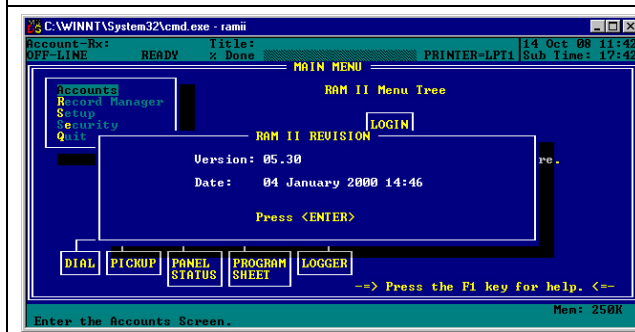
1. Press F1 in RAM II.
2. Select RAM II Revision.

Figure 1: RAM II Revision



3. Verify the Revision Number is 05.30 and the date is 04 January 2000

Figure 2: RAM II Revision



Use the RAM II Exporter to export control panel programming data and some RAM II account data to files that that can be imported as accounts into RPS.

The RAM II Exporter does not export RAM II system configuration, DataLock Codes, DataLock Types and DataLock Names.

You can only see the control panel types supported by this version of the RAM II Exporter. All control panel programming data is included in the exported account file.

The following RAM II account information is included in the exported account file:

- Premises Phone
- Master Account-Rx¹
- Contact Person
- Number, Street, City, State, and Zip
- Zone Notes
- Account Notes

Enter all other RAM II account information into the corresponding RPS account.

¹ RAM II accounts are exported and saved as ".dsf" files. When single or multiple accounts are exported, the exported file names begin with the first four digits of the account's Master Account-Rx, followed by a four digit sequence number such as 0001, 0002, or 0003.

Follow these steps before using the RAM II Exporter:

1. Back up your RAM II directory and all RAM II files.
2. Print a report of all your RAM II account records.
3. Print a report of all your RAM II DataLock codes.

2.0 Installing the RAM II Exporter (except D4112/D6112)

Follow these steps to install the RAM II Exporter:

1. Read *Section 1.0 Introduction* before proceeding.
2. Install the RAM II Exporter on the same PC and in the same directory that the source RAM II accounts are located.
3. On the RAM II PC, run the Install.exe file from the RAMII EXPORTER V004 directory on the CD-ROM.
4. When prompted, point to the path where RAM II is installed. For example, C:\RAMII.
5. Follow the instructions as prompted.
6. Exit when prompted.

3.0 Installing the D4112/D6112 RAM II Exporter

Follow these steps to install the D4112/D6112 RAM II Exporter:

1. Read *Section 1.0 Introduction* before proceeding.
2. Install the RAM II Exporter on the same PC and in the same directory that the source RAM II accounts are located.
3. On the RAM II PC, run the Install.exe file from the D4112_D6112 Exporter V00A directory on the CD-ROM.
4. When prompted, point to the path where RAM II is installed. For example, C:\RAMII.
5. Follow the instructions as prompted.
6. Exit when prompted.

4.0 Using the RAM II Exporter



The RAM II "System Note" is included in the list of available control panel types, and can be exported using the procedure described below.

Follow these steps to use the RAM II Exporter:

1. Exit RAM II if it is running.
2. Go to the directory where you installed the files in *Section 2.0 Installing the RAM II Exporter (except D4112/D6112)* or *Section 3.0 Installing the D4112/D6112 RAM II Exporter*.
3. Run the R2X_V004.exe for all control panel accounts except the D4112/D6112 or run the R2X_V00A for the D4112/D6112 accounts.

4. Enter your RAM II login and password information.
5. Use the arrow keys to select **Accounts**.
6. Press [Enter] on your keyboard. All supported control panel types appear.
7. Use the arrow keys to select the control panel type that you want to export.
If you see double arrows (>>) next to a control panel type, select the control panel type and then press [Enter] to see more selections.
8. Press [Enter] when you have selected the control panel type that you want to export. The exporter shows all of your accounts based on the selected control panel type.
9. Use the arrow keys to select the account that you want to export.
10. Press [Enter].
11. When prompted, use the arrow keys to select an export option and press [Enter].
You can either export the selected account only, or you can export all accounts for the selected control panel type.
12. When prompted, press [Enter] to accept the destination directory as shown, or enter a destination directory and press [Enter].
13. Repeat Steps 9 through 12 until you are finished exporting all of your RAM II accounts.
14. Press [Esc] on your keyboard to return to the main screen.
15. Select **Quit to DOS** to exit the RAM II Exporter.

5.0 Importing Accounts into RPS

Follow these steps to import accounts into RPS:

1. Open RPS.
2. Select **Import** from the File menu.
3. Go to the directory from Step 12 in *Section 4.0 Using the RAM II Exporter*. If RPS is installed on a different PC than RAM II, the exported files directory and drive letter might be different from the directory entered in Step 12.
4. Open the control panel type sub-directory.
5. Select the "dsf" file(s) that you want to import, and click **Import**.
6. Repeat Steps 2 to 5 until all RAM II accounts are imported.

